

# Contrastive Learning from Probabilistic Maps for Cytoarchitectonic Classification of the Cortex

Christian Schiffer<sup>1,2</sup>, Katrin Amunts<sup>1,3</sup>, Timo Dickscheid<sup>1,2,4</sup>

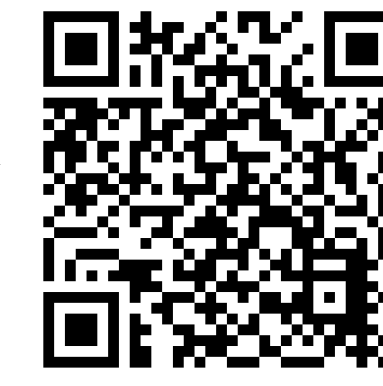
<sup>1</sup>Institute of Neuroscience and Medicine (INM-1), Research Centre Jülich, Germany

<sup>2</sup>Helmholtz AI, Research Centre Jülich, Germany

<sup>3</sup>Cécile & Oscar Vogt Institute for Brain Research, University Hospital Düsseldorf, Germany

<sup>4</sup>Institute of Computer Science, Heinrich-Heine-University Düsseldorf, Germany

Visit us!

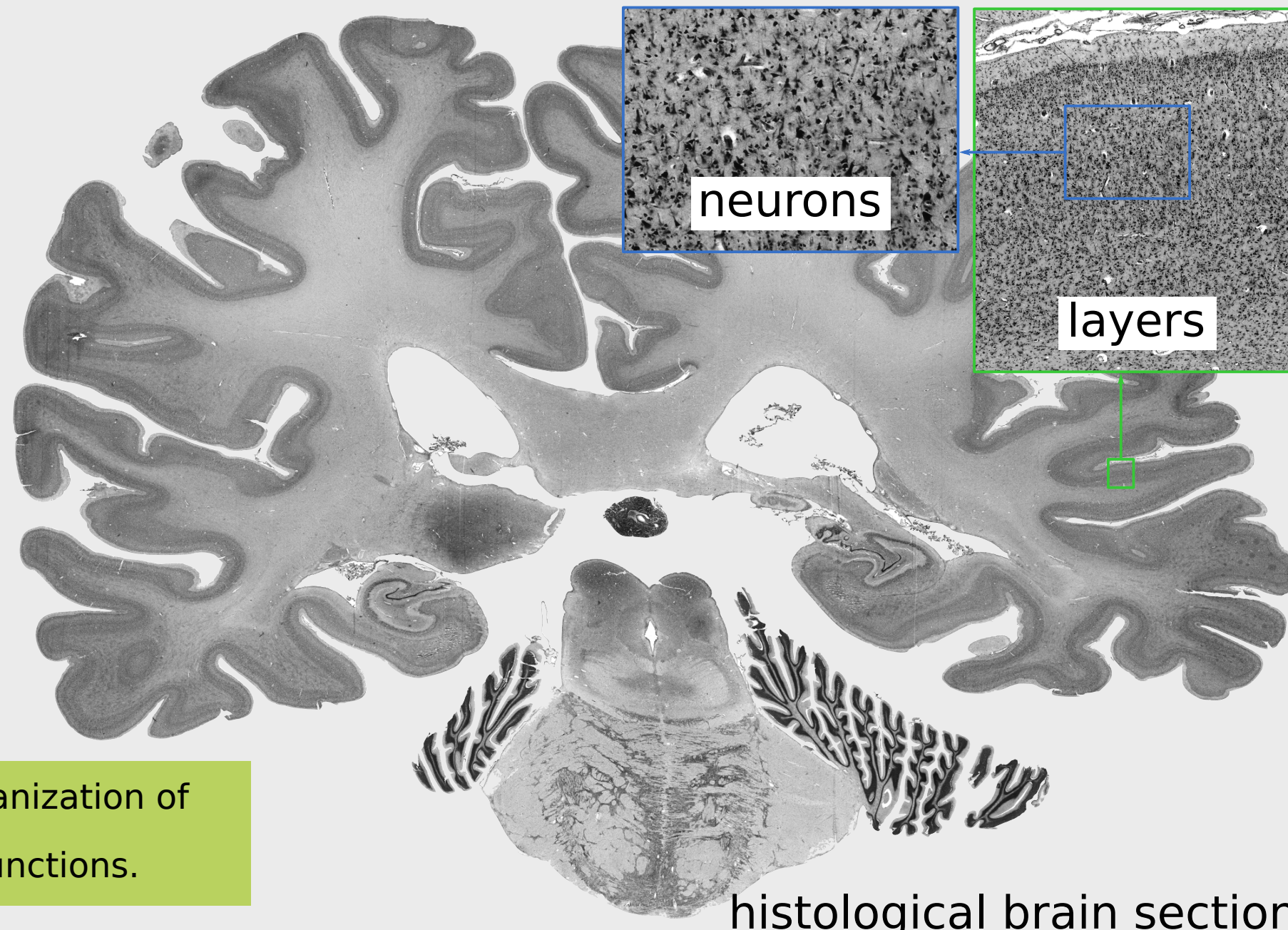


✉ c.schiffer@fz-juelich.de

## Histological Human Brain Sections

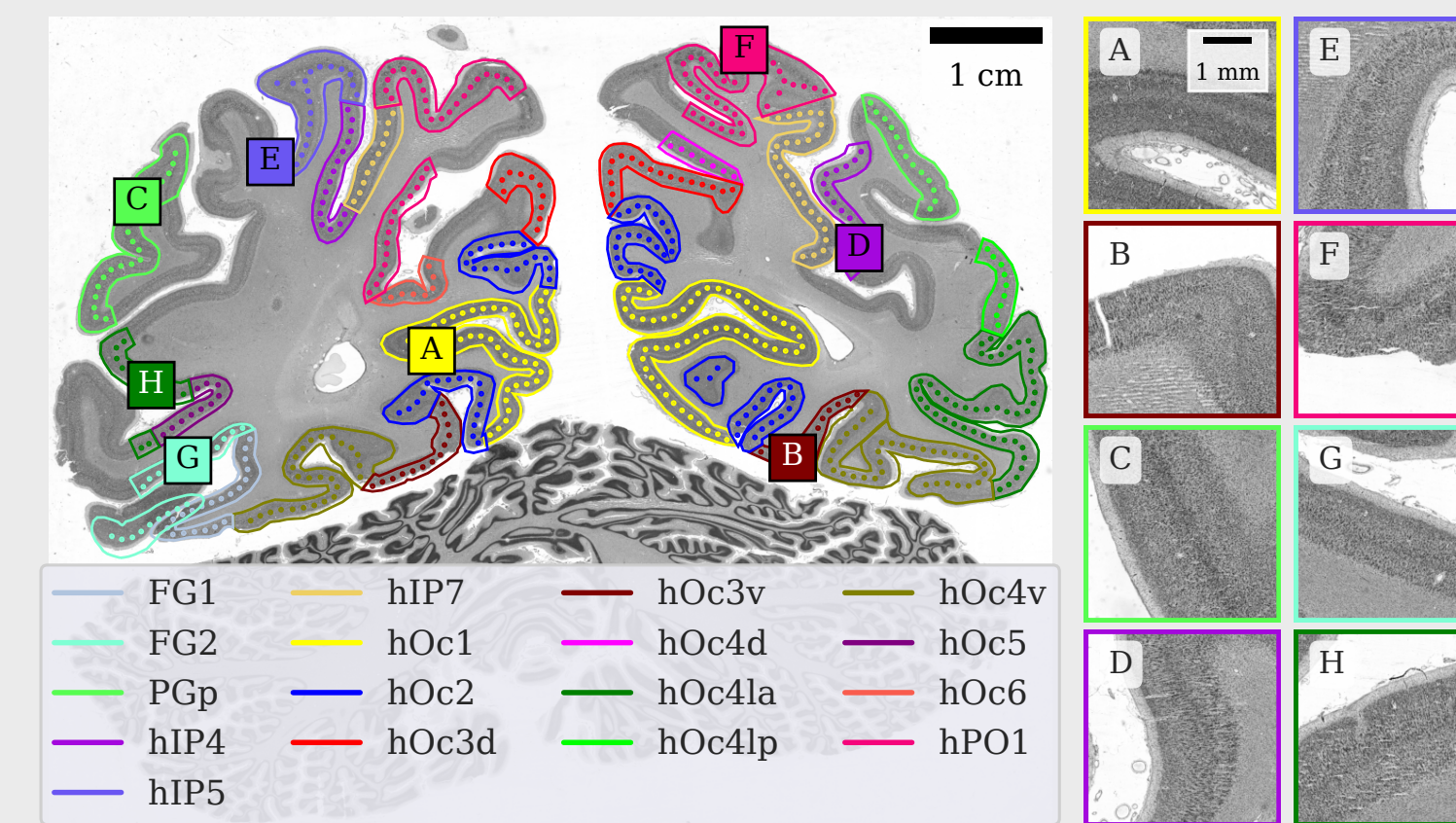
- **Postmortem** human brains
- Fixation in paraffine
- **Cut** into histological sections
  - 6000-8000 sections per brain
  - Thickness: 20µm
- Staining for **cell bodies**
- **Light-microscopic** imaging
  - Resolution: 1µm/pixel
  - up to 100'000 x 136'000 pixels
  - up to 15 GB per image

**Goal:** Study the microstructural organization of the human brain to understand its functions.



histological brain section

## Cytoarchitectonic Brain Areas



- Areas defined by the spatial organization of neurons into **layers** and **columns**
- Indicators for **connectivity** and **function**
- Microstructural reference for **brain atlases** [1, 2]

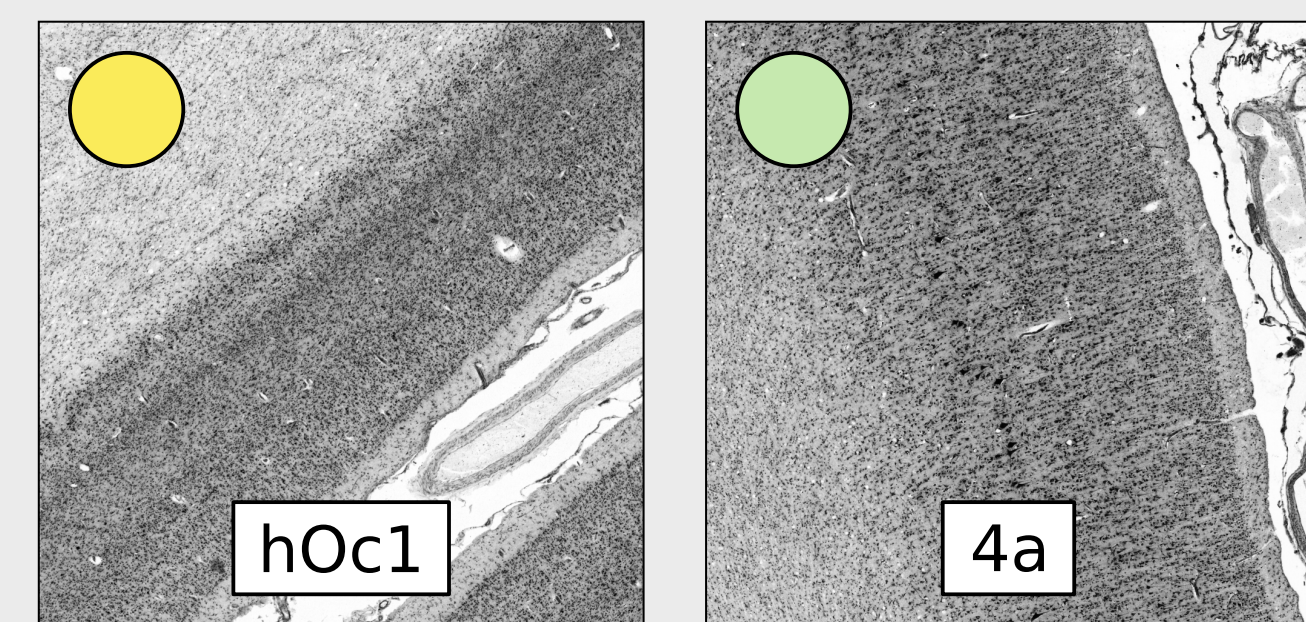
**Goal:** Automatically identify cytoarchitectonic areas using **deep learning** to enable large-scale analysis

**Challenges:** limited annotations; complex and ambiguous structures; multi-scale patterns; artifacts

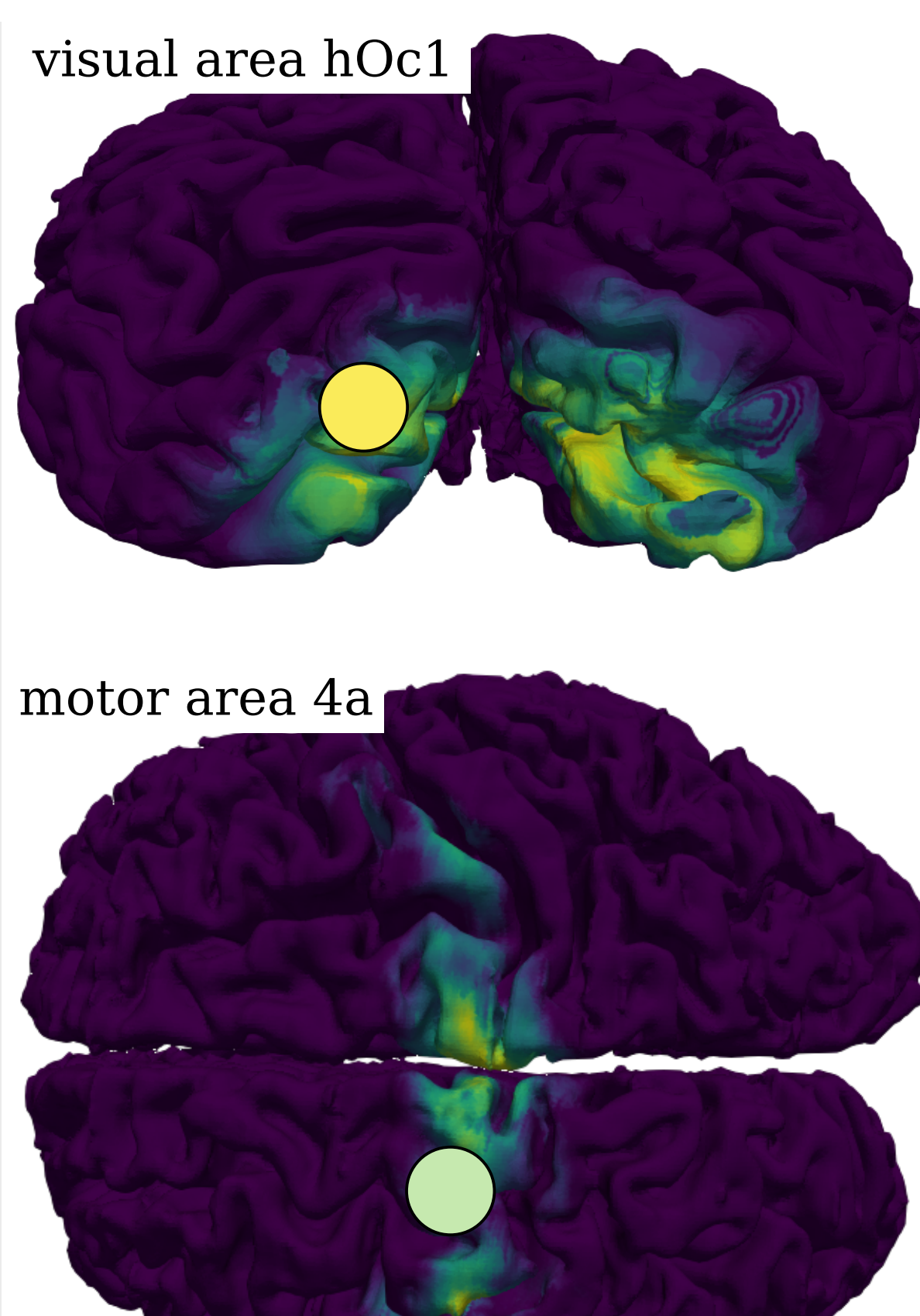
## Probability-guided Contrastive Feature Learning

**Idea:** Train a neural network to map image patches from **similar brain areas** to **similar feature vectors**

### Cytoarchitecture Learning

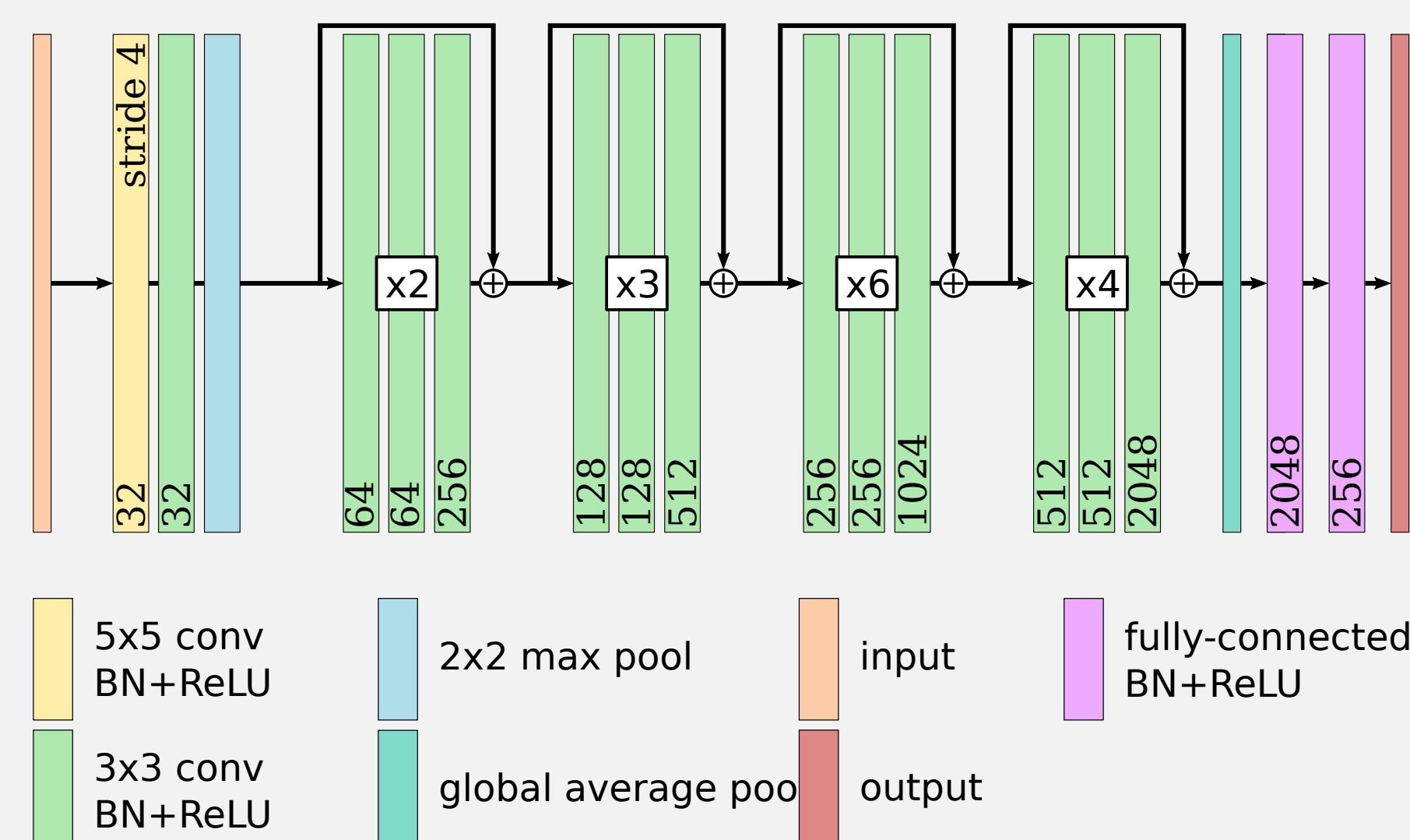


- Extract **image patches** from microscopic images
- Each image patch is associated with a discrete **probability vector** over cytoarchitectonic areas
- Probability vector indicates **how likely** a specific area occurs at a **specific location** in the brain
- Pairwise **similarity weight** is defined as cross-correlation between probability vectors
  - High correlation → similar area → **similar features**
  - Low correlation → different area → **different features**
- **Contrastive learning:** Learn by comparing image patches in a training batch [3]
- Learned features enable cytoarchitecture classification



**Probabilistic maps** from Julich-Brain [1] indicate the occurrence probability of areas at different locations

## Training & Neural Network Architecture



- Based on **ResNet50**
- **Custom head** to account for large input image size
- **Input size:** 2048px@2µm/px
- **Batch size:** 2048 images
- **Projection head** [3]
- 3679 brain sections (8 brains)
- **Hardware configuration**
  - **JURECA-DC** [4] (16 nodes)
  - **GPUs:** 64 Nvidia A100
  - **Training time:** 18 hours

## Probability-guided Contrastive Loss

**Idea:** Compute a continuous similarity indicator for the contrastive loss based on correlation of probabilistic maps

**feature vectors** encoded by a neural network

$$z_i = f(X_i)$$

$$\mathcal{L}_i = - \frac{1}{\sum_{j=1}^N \omega_{ij}} \sum_{j=1}^N \mathbb{I}_{i \neq j} \omega_{ij} \log \frac{\exp(\langle z_i, z_j \rangle / \tau)}{\sum_{k=1}^N \mathbb{I}_{i \neq k} \exp(\langle z_i, z_k \rangle / \tau)}$$

**similarity weight** between two probability vectors

$$\omega_{ij} = \langle p_i, p_j \rangle$$

**probability vector** associated with an image patch  
**image patch** extracted from a microscopic brain scan

$p_i \in \mathbb{R}^P$  number of image patches in a training batch  
 $X_i$  **temperature** scaling parameter

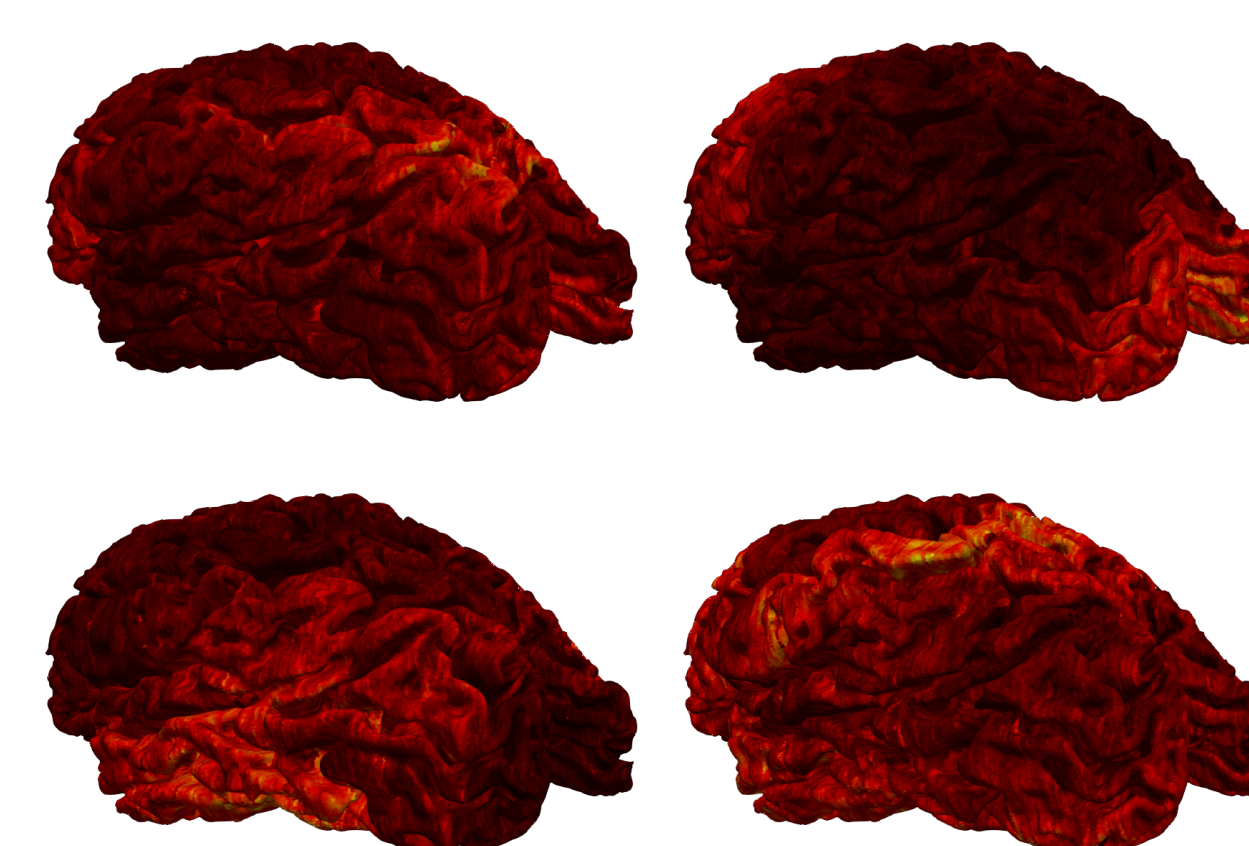
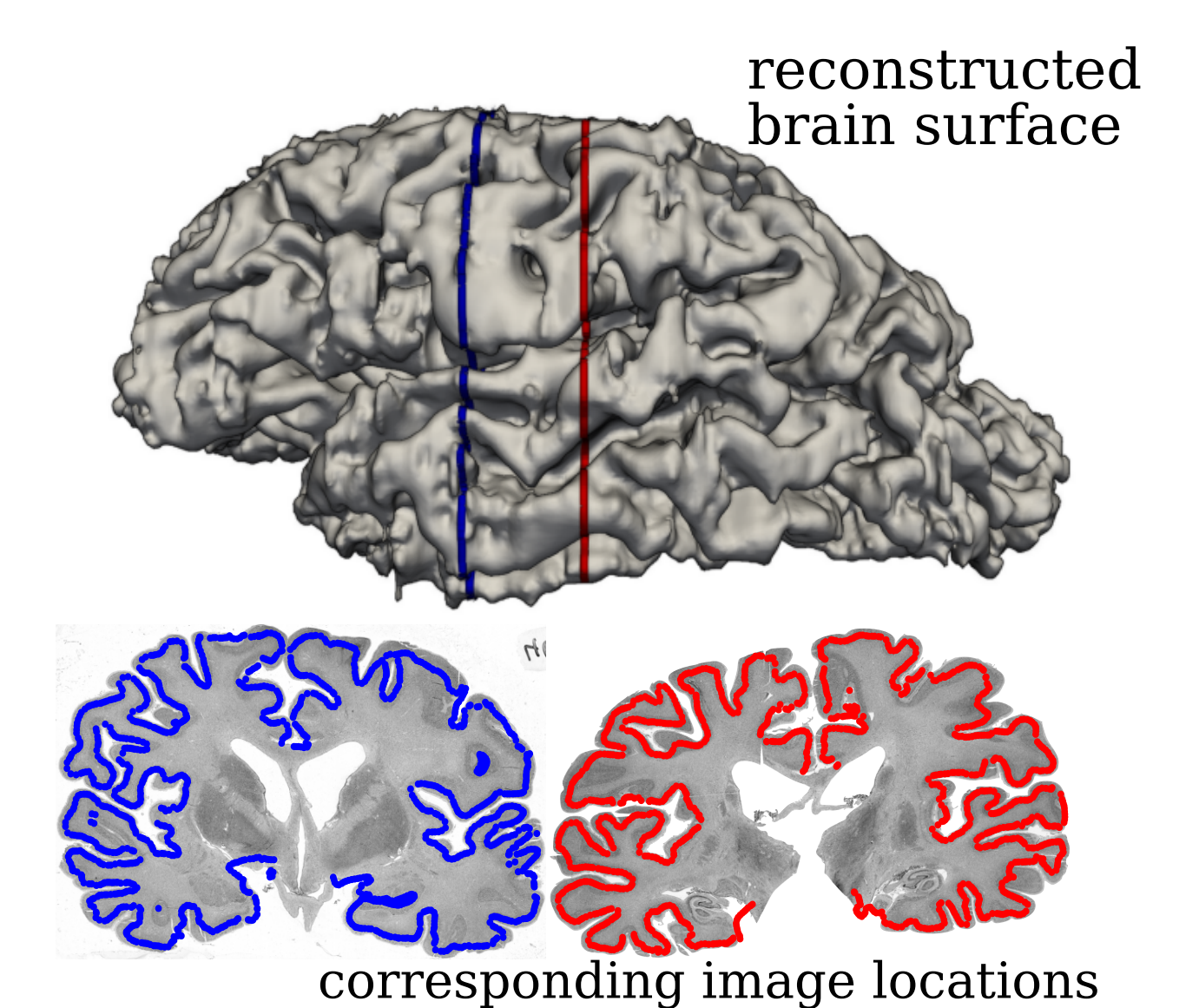
$N$   
 $\tau$

## Graph Neural Networks for Cytoarchitecture Classification

**Idea:** Model cytoarchitecture classification as **graph node classification task** on approximate brain reconstructions

### Graph-based Framework

- Approximately reconstruct **brain surface meshes**
- Associate mesh nodes with **image locations**
- Compute **deep cytoarchitectonic features**
- Add **additional features** (location, probabilistic maps, annotations) to graph nodes
- Train **graph neural networks (GNNs)** to classify corresponding **cytoarchitectonic areas** for each node in the graph [5]
- GNNs combine local **high-resolution image features** with **neighborhood information**



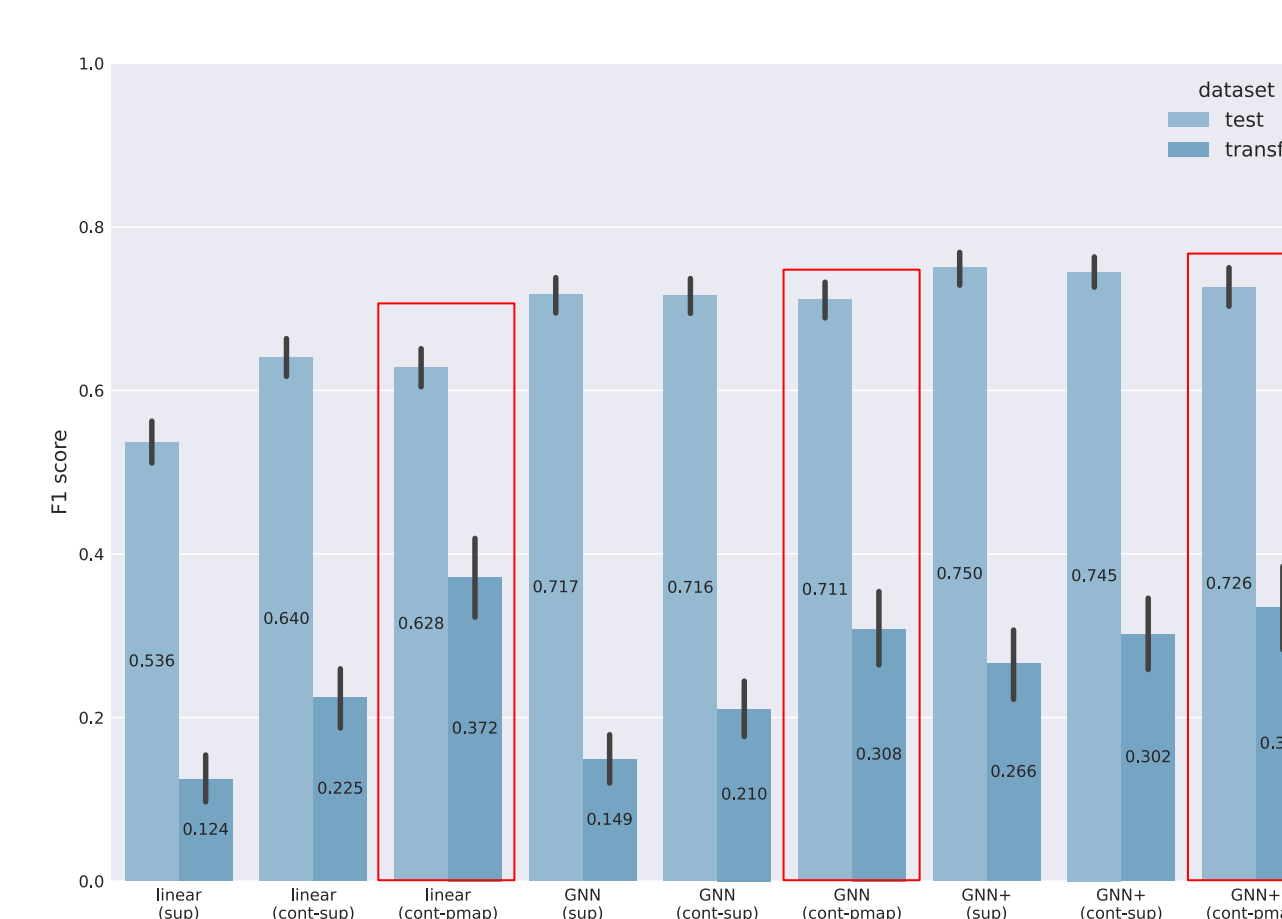
cytoarchitectonic features

## Training & Evaluation

- Training with **categorical cross-entropy** using available expert annotations
- 1860 sections from 7 brains (80% train, 20% test)
- 325 sections from 8th brain (transferability check)
- **Architecture:** Graph Attention (GAT) [6] (3 layers)
- **Input:** cytoarchitecture features, probability vectors, canonical spatial coordinates [5]
- Performance measurement using **macro-F1 score**

## Conclusion & Future Work

- **Probability-guided contrastive learning** enables learning of useful cytoarchitectonic features without annotated training data
- **Graph Neural Networks** efficiently integrate local features from high-resolution images with neighborhood information encoded in graphs
- **Future work**
  - **End-to-end** learning of image and graph features
  - **Cluster analysis** as basis for **data-driven brain parcellation** and knowledge discovery
  - Investigation of **limited transferability** to unseen brains



**Macro F1-scores** for known (test) and unknown (transfer) brains. **sup:** supervised; **cont-sup:** contrastive supervised [5]; **cont-pmap:** contrastive pmap; **linear:** linear classification; **GNN:** GNN w. cytoarchitecture features; **GNN+:** GNN w. cytoarchitecture features, pmaps, and coordinates.

- Amunts, K. et al. *Julich-Brain: A 3D probabilistic atlas of the human brain's cytoarchitecture*. Science 369 (2020).
- Amunts, K. & Zilles, K. *Architectonic Mapping of the Human Brain beyond Brodmann*. Neuron 88 (2015).
- Chen, S. et al., *A simple framework for contrastive learning of visual representations*. ICML, (2020)
- Thörnig, P., *JURECA: Data Centric and Booster Modules implementing the Modular Supercomputing Architecture at Jülich Supercomputing Centre*. JLSRF 7 (2021)
- Schiffer, C. et al. *2D Histology Meets 3D Topology: Cytoarchitectonic Brain Mapping with Graph Neural Networks*. MICCAI (2021)
- Veličković, P. *Graph Attention Networks*, arXiv:1710.10903 (2018)

This project received funding from the European Union's Horizon 2020 Research and Innovation Programme, grant agreement 945539 (HBP SGA3), and from the Helmholtz Association's Initiative and Networking Fund through the Helmholtz International BigBrain Analytics and Learning Laboratory (HIBALL) under the Helmholtz International Lab grant agreement InterLabs-0015. Computing time was granted through JARA on the supercomputer JURECA-DC at Jülich Supercomputing Centre (JSC).