

# SELF-CAUGHT MIND BLANKING EPISODES RESEMBLE ATTRIBUTES OF PROBED MIND BLANKING REPORTS

Aragón Daud Agustina<sup>1,3</sup>, Mortaheb Sepehr<sup>1,2,4</sup>, Paradeisios Alexandros Boulakis<sup>1,2,5</sup>,  
Kaustubh Patil<sup>3,6</sup>, Raimondo Federico<sup>3,6</sup>, Demertzi Athena<sup>1,2,5</sup>

<sup>1</sup> Cyclotron Research Center In Vivo Imaging, GIGA Institute, University of Liège, Liège, Belgium

<sup>2</sup> Fund for Scientific Research (FNRS), Brussels, Belgium

<sup>3</sup> Institute of Neuroscience and Medicine, Brain and Behaviour (INM-7), Research Centre Jülich, Jülich, Germany

<sup>4</sup> Lab for Equilibrium Investigations and Aerospace (LEIA), University of Antwerp, Antwerp, Belgium

<sup>5</sup> Psychology and Neuroscience of Cognition Research Unit, University of Liège, Liège, Belgium

<sup>6</sup> Institute of Systems Neuroscience, Medical Faculty, Heinrich Heine University Düsseldorf, Düsseldorf, Germany

a.aragondaud@uliege.be

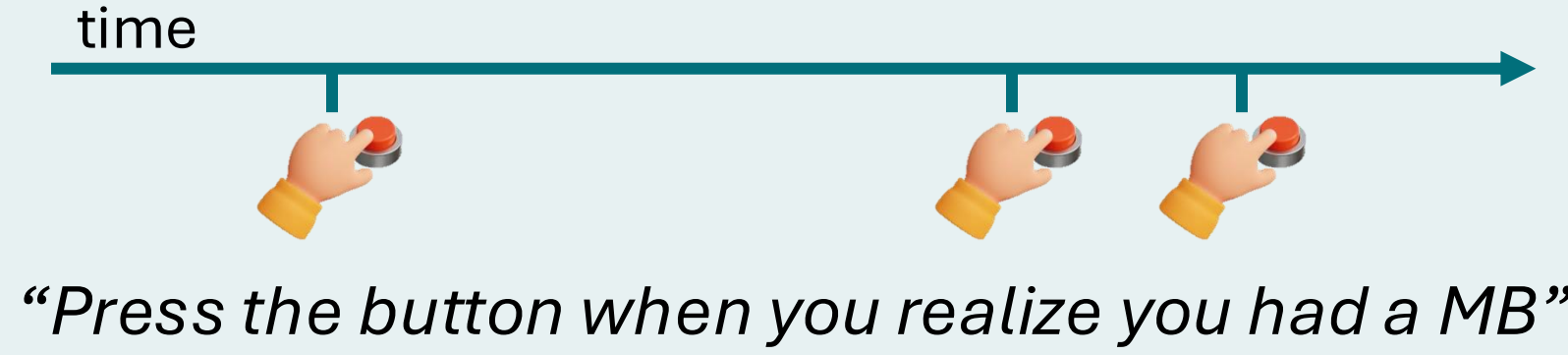
## Introduction

- Mind blanking (MB): mental state of empty mind or with no reportable content [1].
- MB is mainly quantified using probes [2-3].
- H: self-caught MB resembles probed MB.

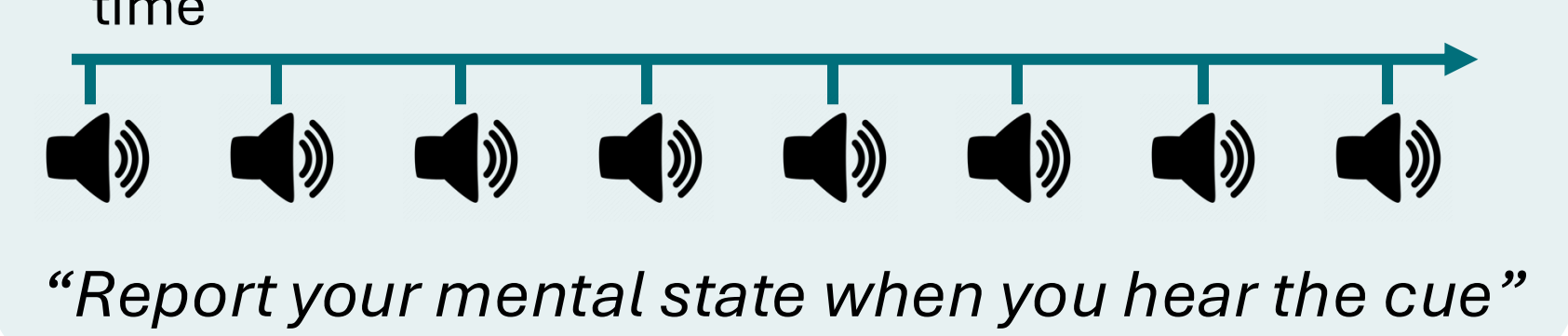
## Methods

Within-subject design (3T fMRI)

### Self-caught MB (scMB)

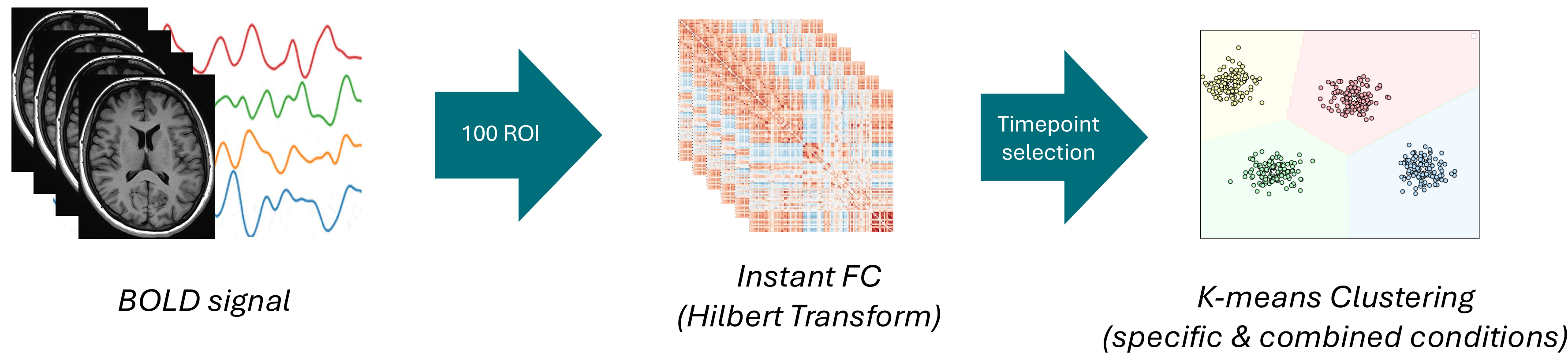


### Probed MB (pMB)



N = 21  
Healthy participants  
age: 29 ± 4; 48% female

## Analysis



### Behavior

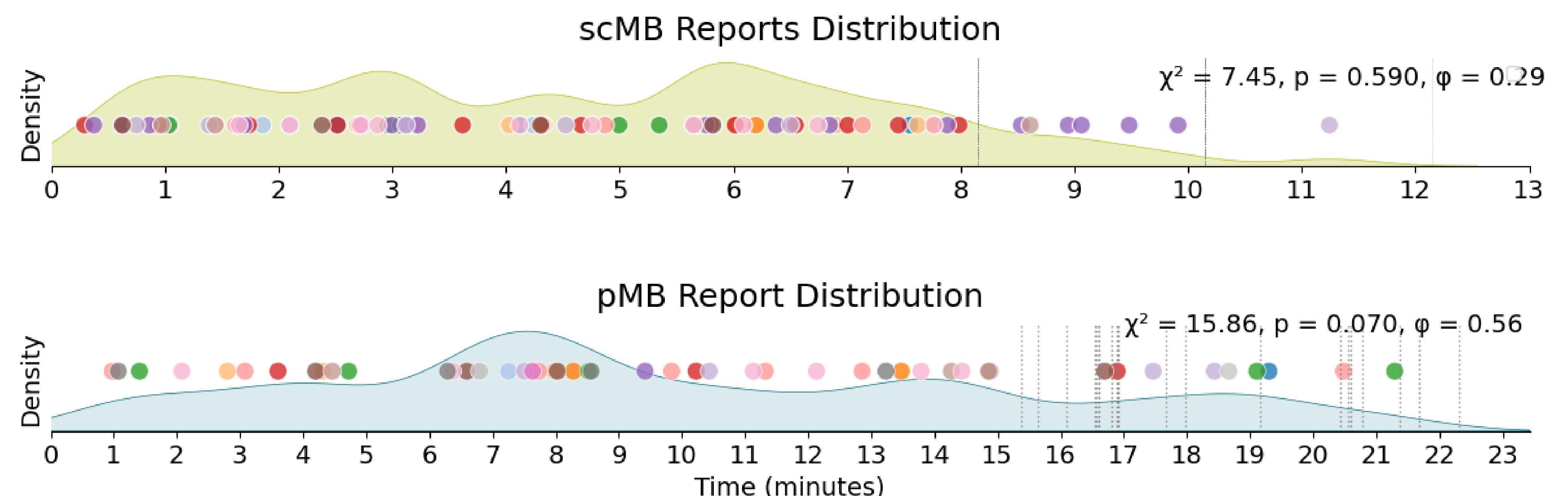
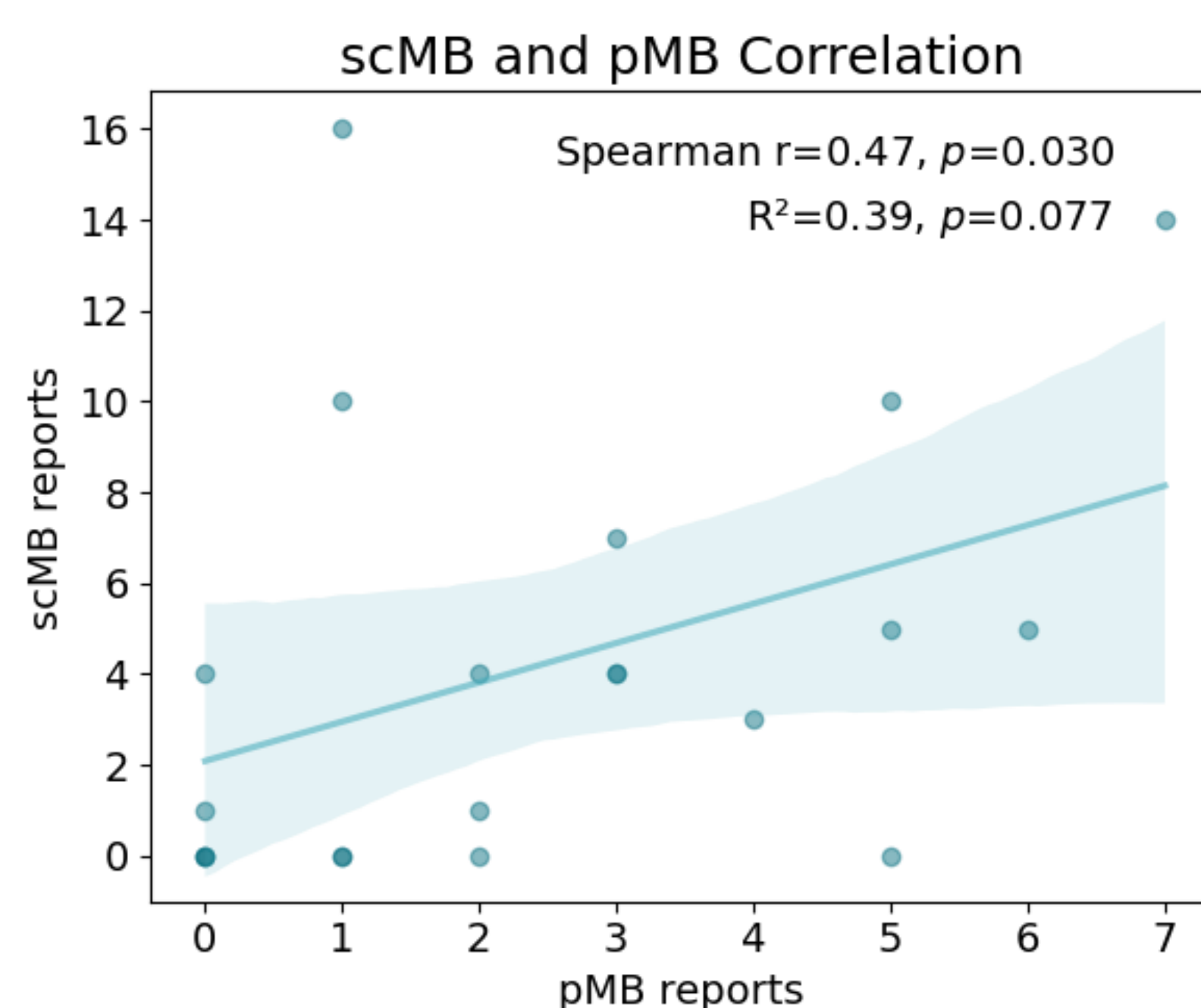
- Correlation between number of reports per condition
- Distribution of reports across time ( $\chi^2$  vs uniform)

### Brain

- **Condition Specific:** FC distance to their cluster & analog cluster in other condition (Bayesian GLM with random effects, ROPE ± 0.4 SMD)
- **Combined:** occurrence rate normalized by subject (paired t-test, p-FDR < 0.05)

## Results

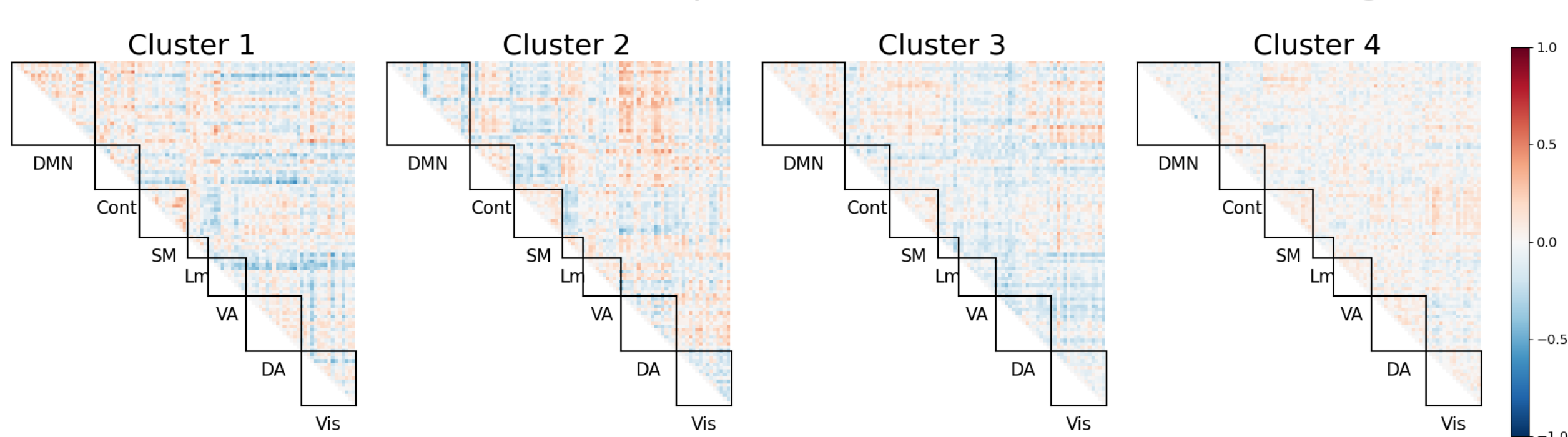
scMB and pMB correlated positively, and both type of reports distributed uniformly over time



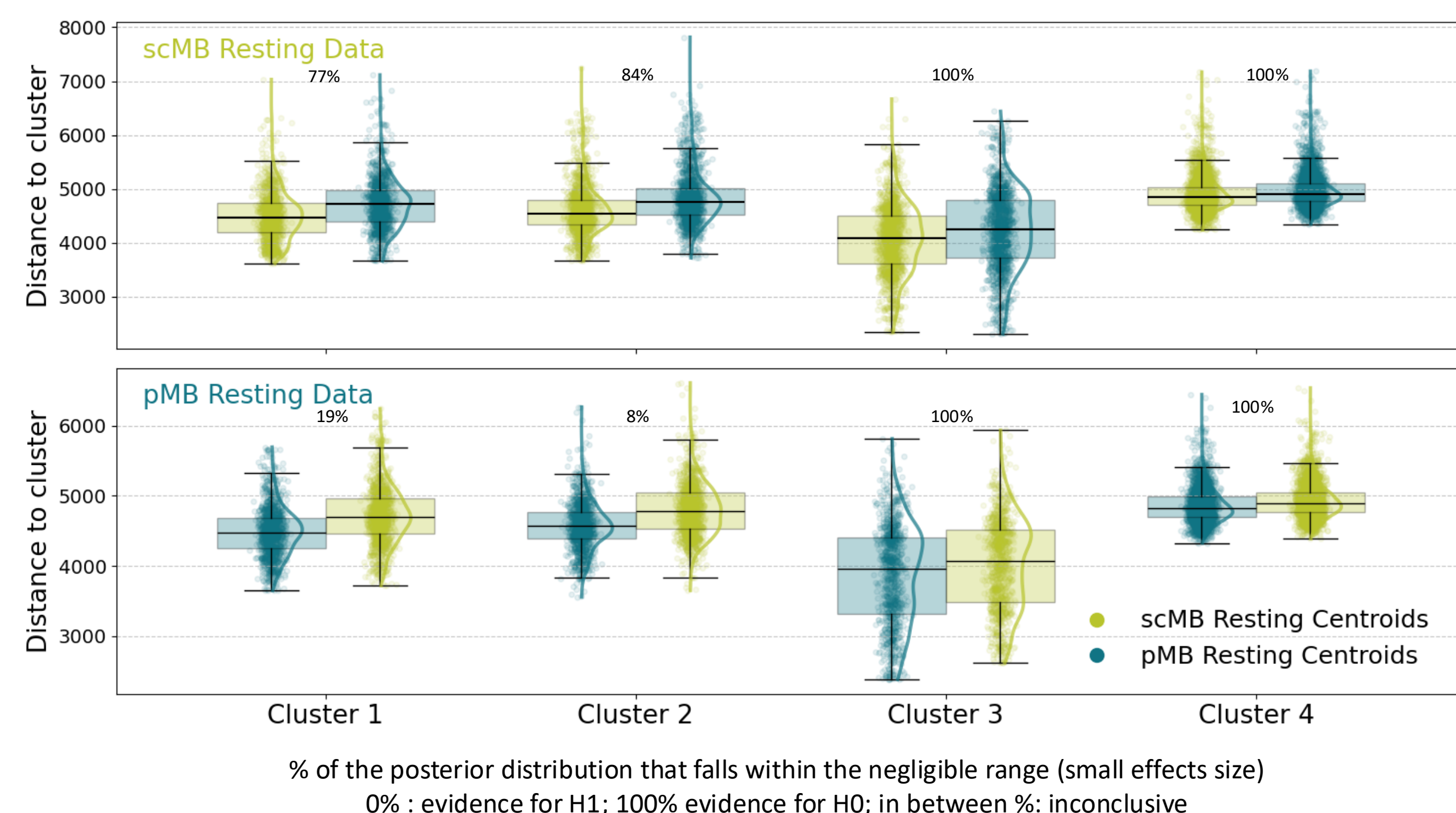
scMB and pMB clustering were equivalent in P3/P4 and inconclusive in P1/P2, with no clear difference

### Comparison of conditions

Difference between scMB and pMB conditions Centroids (k=4, lag=0s)



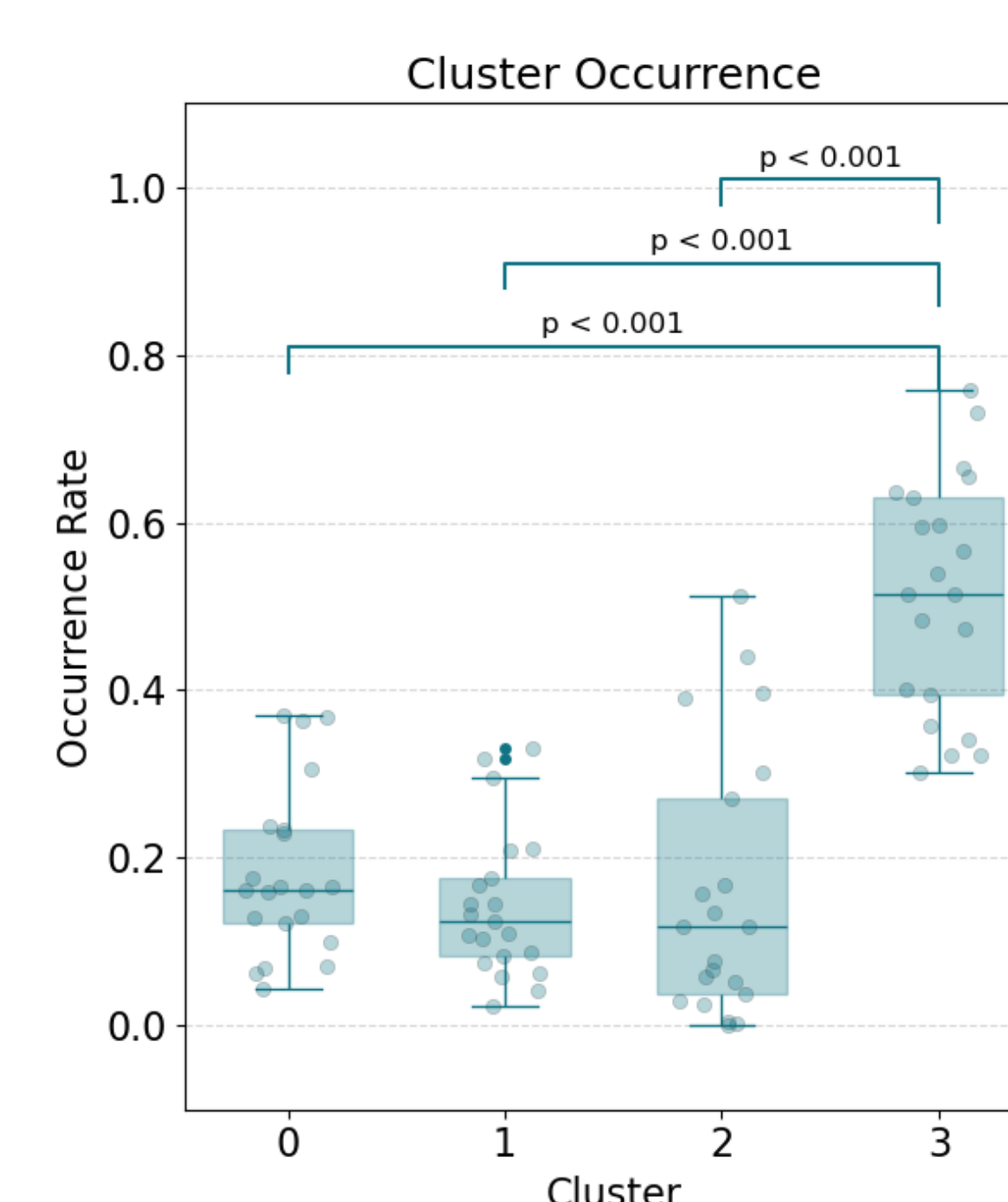
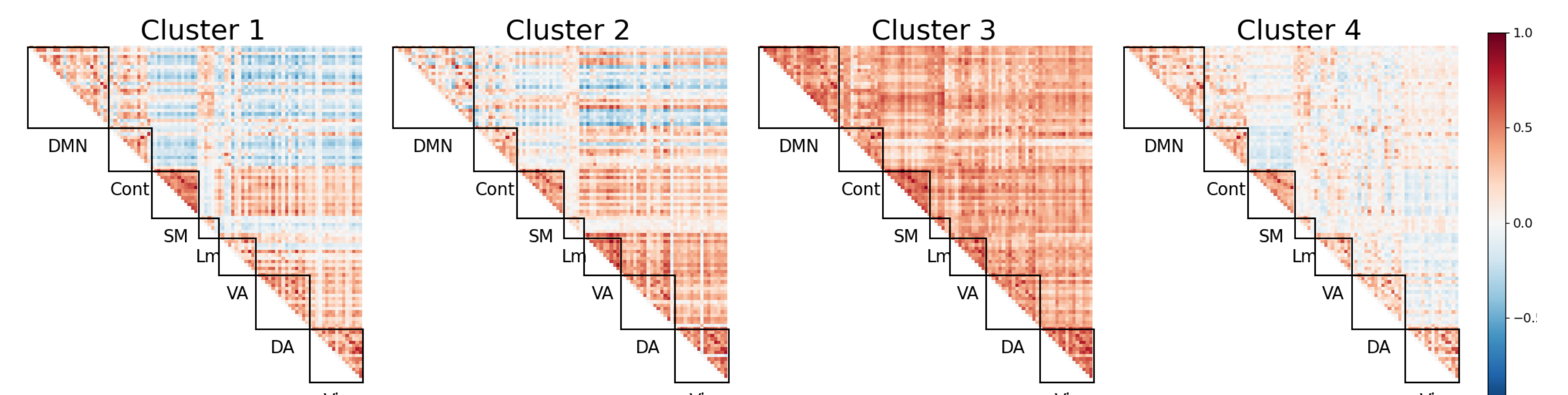
Distance to Same-condition vs Other-condition Cluster



FC patterns and their occurrence rate matched prior work

### Combined conditions

Centroid Matrices for K-Means Clustering (k=4, lag=0s, data=all)



## Highlight

Self-caught methodology provides representative MB quantification comparable to probed MB, enabling alternative protocols.

## References

- [1] Boulakis & Demertzi, 2025. *Current Opinion in Behavioral Sciences*. Vol 61, 101481
- [2] Andriillon et al., 2021, *Nature Communications*, Vol. 12, 3657
- [3] Mortaheb et al., 2022. *Proceedings of the National Academy of Sciences*, Vol. 119, e2200511119