

Dominance of Radiation Pressure in Ion Acceleration with Linearly Polarized Pulses at Intensities of 10^{21} W cm $^{-2}$

B. Qiao,^{1,2} S. Kar,¹ M. Geissler,¹ P. Gibbon,³ M. Zepf,¹ and M. Borghesi¹

¹*School of Mathematics and Physics, Queen's University Belfast, Belfast BT7 1NN, United Kingdom*

²*Center for Energy Research, University of California San Diego, La Jolla, California 92093, USA*

³*Jülich Supercomputing Center, Forschungszentrum Jülich GmbH, D-52425, Jülich, Germany*

(Received 19 July 2011; published 12 March 2012)

A novel regime is proposed where, by employing linearly polarized laser pulses at intensities 10^{21} W cm $^{-2}$ (2 orders of magnitude lower than discussed in previous work [T. Esirkepov *et al.*, *Phys. Rev. Lett.* **92**, 175003 (2004)]), ions are dominantly accelerated from ultrathin foils by the radiation pressure and have monoenergetic spectra. In this regime, ions accelerated from the hole-boring process quickly catch up with the ions accelerated by target normal sheath acceleration, and they then join in a single bunch, undergoing a hybrid light-sail–target normal sheath acceleration. Under an appropriate coupling condition between foil thickness, laser intensity, and pulse duration, laser radiation pressure can be dominant in this hybrid acceleration. Two-dimensional particle-in-cell simulations show that 1.26 GeV quasimonoenergetic C⁶⁺ beams are obtained by linearly polarized laser pulses at intensities of 10^{21} W cm $^{-2}$.

DOI: 10.1103/PhysRevLett.108.115002

PACS numbers: 52.38.Kd, 29.25.-t, 52.50.Jm, 52.65.Rr

Laser-driven ion acceleration from solid foils has attracted great interest due to its many prospective applications [1,2] including isotope production, tumor therapy, ultrafast radiography, and inertial confinement fusion. Several of these applications require a high-energy ion beam with a large particle number and a monoenergetic spectrum. Currently, two main acceleration mechanisms have been identified and widely investigated: target normal sheath acceleration (TNSA) [3,4] and radiation pressure acceleration (RPA) [5–9]. In TNSA, the acceleration of ions is due to the strong electrostatic sheath field at the rear of the foil, created by hot electrons generated from the foil front side via the oscillating $\mathbf{j} \times \mathbf{B}$ heating of linear polarized (LP) lasers. The ion beams produced by TNSA are typically characterized by low particle density, large divergence, and broad energy spread. RPA in principle is a very efficient scheme for obtaining high-quality monoenergetic ion beams, via the so-called “hole-boring” (HB) [6] and “light-sail” (LS) [7,8] stages. It is generally accepted that an effective implementation of the RPA scheme at realistic irradiances is facilitated by the use of circularly polarized laser pulses [6,8,9], as this will provide a constant ponderomotive drive. The nonoscillating ponderomotive force applies a steady pressure to the foil front surface and piles up electrons into a compressed layer, inducing an intense charge separation field that accelerates the ions. This process, known as HB, is repeated until the laser pulse punches through the foil. At later times the compressed electron and ion layers combine together to form a quasi-neutral plasma slab undergoing LS RPA [8].

By contrast, for LP lasers the oscillating $\mathbf{j} \times \mathbf{B}$ term causes heating and recirculation of hot electrons through the target, resulting in a large sheath field at the rear side of the foil. The ions at the rear are accelerated by TNSA, and

the foil undergoes rapid decompression, breaking the equilibrium condition [8] required for LS RPA. A RPA-dominated regime (“laser-piston”) has been identified by Esirkepov *et al.* [10] at the extremely high intensity of $I > 10^{23}$ W cm $^{-2}$. The key principle is using the ultra-strong radiation pressure to accelerate protons to relativistic energy during a few laser cycles before the rapid growth of the rear sheath field and the heavy decompression of the foil, so that the protons can quickly catch up with the electrons in an accelerating plasma slab. Recently, Zhuo *et al.* [11] discussed a dual-peaked electrostatic field acceleration for production of quasimonoenergetic ion beams using LP pulses. In reality, the situation they discuss is qualitatively the same as the laser-piston regime in Ref. [10], as they also use a very high laser intensity (5.5×10^{22} W cm $^{-2}$) resulting in proton acceleration to relativistic energy within 2 laser cycles. There is, however, a clear interest in identifying regimes where RPA can dominate the acceleration at intensities more easily reachable with current or near-term laser systems employing LP laser pulses.

In this Letter, we identify a new RPA-dominated regime of quasimonoenergetic ion beam generation for LP laser pulses at intensities of 10^{20} – 10^{21} W cm $^{-2}$. In this regime, with an appropriate coupling condition between foil thickness, laser intensity, and pulse duration satisfied, RPA can be dominant during the competition between RPA and TNSA mechanisms in a hybrid acceleration stage. Such a coupling condition has been analytically derived and verified by two-dimensional (2D) particle-in-cell (PIC) simulations. These show that 1.26 GeV quasimonoenergetic C⁶⁺ ion beam with energy spread ~ 0.1 GeV and angular divergence $< 5^\circ$ is obtained by irradiation of 80 nm ultrathin foils with LP pulses at intensities 10^{21} W cm $^{-2}$.

As expected [9,12–14], the simulations also show that a multispecies foil helps to stabilize the LS RPA component in the hybrid acceleration of lighter ions, resulting in more pronounced spectral peaks, similar to what was observed from “pure” RPA using circularly polarized lasers.

When a LP laser pulse irradiates a solid foil target, the electrons in the skin depth of the front surface are accelerated by the ponderomotive force [15]

$$f_p = -\frac{e^2}{4m_e\omega^2}\nabla|E_L|^2(1 - \cos 2\omega t), \quad (1)$$

which includes nonoscillating and oscillating terms. In Eq. (1), E_L is the amplitude of the laser field oscillating at frequency ω , m_e and e are electron mass and charge, respectively, and t is the time. Electrons are pushed inward by the nonoscillating ponderomotive term and pile up in a compressed layer, inducing a charge separation electric field E_z which accelerates ions in a pistonlike manner, known as HB RPA [6,7,9]. From the momentum balance, the HB velocity is obtained as [6]

$$\frac{v_b}{c} = \frac{\sqrt{n_c m_e / n_i m_i a}}{1 + \sqrt{n_c m_e / n_i m_i a}}, \quad (2)$$

where n_i and m_i are ion density and mass, respectively, $n_c = m_e \omega^2 / e^2$ is the critical density, $a = e|E_L| / mc\omega$ is the laser amplitude, and c is light speed. Assuming that the laser field is perfectly reflected, the ions can obtain the maximum velocity $v_{i,\text{front}} = 2v_b / (1 + v_b^2/c^2)$.

However, due to the oscillating ponderomotive term, a fraction of electrons in the skin depth are heated rapidly by the $\mathbf{j} \times \mathbf{B}$ effect and travel through the target at a speed close to c . A hot-electron cloud forms at a distance of the Debye length $\lambda_h = (k_B T_h / 4\pi n_h e^2)^{1/2}$ away from the target rear edge, which induces a sheath electric field accelerating ions according to the TNSA mechanism. This sheath field scales as the hot-electron temperature T_h multiplying the effective density in the cloud n_h , i.e., $E_{\text{sheath}} \approx (4\pi n_h T_h)^{1/2}$. Based on the expanding plasma model, the maximum ion velocity obtained by TNSA can be estimated as [16,17]

$$v_{i,\text{rear}} = C_h [2 \ln(\omega_{pi} t) + \ln 2 - 1], \quad (3)$$

where $C_h = (T_h / m_i)^{1/2}$ and $\omega_{pi} = (4\pi n_h Z e^2 / m_i)^{1/2}$ are the hot-electron sound speed and the local ion plasma frequency, respectively. Furthermore, for a solid foil target of steep density gradient, T_h is obtained as [18] $T_h = (\gamma n_c / n_{0e})^{1/2} [(1 + a^2)^{1/2} - 1] m_e c^2$, where $\gamma = (1 + a^2)^{1/2}$.

If the foil thickness is less than half of the pulse length, i.e., $l_0 < c\tau_L/2$, but thick enough to prevent the laser from punching through, it has been shown [19] that the recirculation of hot electrons through the target increases the effective hot-electron density, resulting in an enhanced rear sheath field and ion TNSA. The hot-electron recirculation also leads to rapid foil deformation, breaking the equilibrium condition required for LS RPA. Therefore,

TNSA usually dominates for ion acceleration by LP laser pulses. The ion acceleration in the sheath field will end by achieving the terminal velocity of Eq. (3) after the laser pulse is over.

To achieve RPA dominance with a LP laser pulse, a first condition is to use a foil target sufficiently thin that the hole boring can reach the foil rear surface early enough within the laser pulse duration, that is, $l_0 < v_b \tau_L$. Under this condition, the ions from the foil front side accelerated by HB RPA combine together with those undergoing TNSA at the foil rear and experience a hybrid TNSA-LS acceleration. Furthermore, to ensure that RPA dominates over TNSA in the hybrid acceleration, the condition $v_{i,\text{front}} > v_{i,\text{rear}}$ should be satisfied at the time $t_{hb} = l_0 / v_b$ when HB reaches the foil rear surface. This indicates that the ions accelerated by HB RPA can overtake the TNSA-accelerated ions in the LS stage. From Eqs. (2) and (3), we obtain that the coupling condition of the RPA dominance is

$$\frac{1}{\pi} \frac{n_c}{n_0} a < \frac{l_0}{\lambda} < \frac{1}{2\pi} \sqrt{\frac{n_c}{\gamma n_0}} a \exp \left[\sqrt{\frac{Z n_c}{n_0}} \frac{a}{\sqrt{\gamma - 1}} \left(\frac{n_0}{\gamma n_c} \right)^{1/4} + \frac{1 - \ln 2}{2} \right], \quad (4)$$

where n_0 is the initial foil electron density and $n_h = \gamma n_c$ is assumed to be the effective hot-electron density; λ is the laser wavelength; A and Z are the ion mass and charge number, respectively, satisfying $n_0 = Z n_i$ and $m_i = A m_p$. The left part of the condition (4) satisfies the requirement to avoid complete electron blowout from the foil target [8,9].

If the condition (4) is satisfied, after the HB ends the ion beam acceleration is dominated by RPA in the LS stage where TNSA contributes only as a small leakage from the rear surface of the accelerated slab. The peak velocity of ion motion in the LS can be described [6,7] as

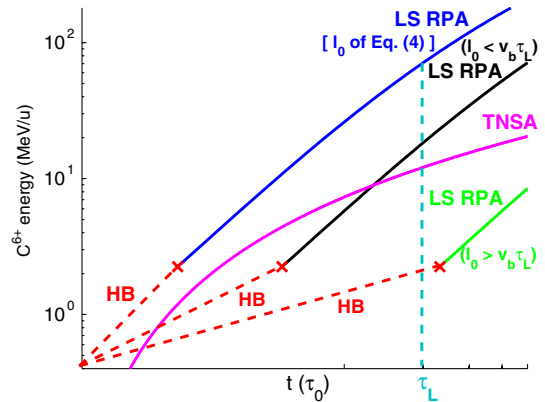


FIG. 1 (color online). Three regimes for ion acceleration from thin foils by LP laser pulses, based on Eqs. (2)–(5): RPA-dominated (blue and purple lines), competing of RPA and TNSA (black and purple), and TNSA-dominated (purple and green), where the cross point corresponds to the transition time from HB RPA to LS RPA.

$$\frac{dv_i}{dt} = \frac{1}{2\pi n_i m_i l_0} \frac{|E_L|^2}{\gamma^3} \frac{1 - v_i/c}{1 + v_i/c}, \quad (5)$$

where $|E_L| = (m_e c \omega / e) a$. According to Eqs. (2)–(5), Fig. 1 plots three possible cases of ion hybrid acceleration from foils by LP laser pulses. If an ultrathin foil is used with the condition (4) satisfied, ion acceleration is in the RPA-dominated regime (blue line), where high-energy quasimonoenergetic ion beams can be obtained. If the foil is thicker with the condition (4) violated but thin enough to satisfy $l_0 < v_b \tau_L$, ion acceleration takes place in a hybrid stage where RPA and TNSA compete (black and purple lines). Since the energy increase of RPA grows more rapidly than TNSA, quasimonoenergetic ion beams may be obtained after a long acceleration time; that is, a long pulse duration τ_L is required. If the foil is even thicker with $l_0 > v_b \tau_L$, ions undergo pure TNSA acceleration (purple line). Therefore, quasimonoenergetic ion beams can be obtained by using either an ultrathin foil target or a long laser pulse even at intensities much lower than those discussed in Refs. [10,11].

In order to verify the different regimes discussed above, 2D PIC simulations are run with the code

“ILLUMINATION.” We choose a LP laser pulse with $I_0 = 3 \times 10^{21} \text{ W cm}^{-2}$, $\lambda = 1.0 \mu\text{m}$, and super-Gaussian intensity distribution $\exp[-(r/r_0)^4]$ propagating along the z axis, where $r_0 = 5 \mu\text{m}$ is the spot radius. The laser pulse has a trapezoidal temporal profile of duration $20\tau_0$ ($\tau_0 = 2\pi/\omega$), consisting of a plateau of $18\tau_0$ and rising and falling times of $1\tau_0$ each. The fully ionized carbon foil with electron and C^{6+} densities $n_0 = 600n_c$ and $n_i = 100n_c$ and thickness $l_0 = 80 \text{ nm}$ is located at $z = 3 \mu\text{m}$, where the condition (4) is satisfied. In the simulations, 5000 cells along the z axis and 3072 cells transversely along the x axis constitute a $20 \times 24.576 \mu\text{m}$ simulation box. Each foil cell is filled up with 576 electrons and 96 C^{6+} ions.

Figures 2(a)–2(d) show density maps of electrons (n_e) and C^{6+} (n_i) at time $t = 15, 23, 32$, and 53 fs . Figure 2(a) corresponds to the initial HB stage. On the one hand, due to $\mathbf{j} \times \mathbf{B}$ heating, the hot electrons of temperature $T_h = (\gamma n_c / n_{0e})^{1/2} [(1 + a^2)^{1/2} - 1] m_e c^2 \approx 7 \text{ MeV}$ quickly travel through the target and form a hot-electron sheet of density about $11n_c$ at a distance of the Debye length $\lambda_h \sim 0.2 \mu\text{m}$ away from the foil rear surface. From Fig. 2(e), we see that a strong sheath electric field

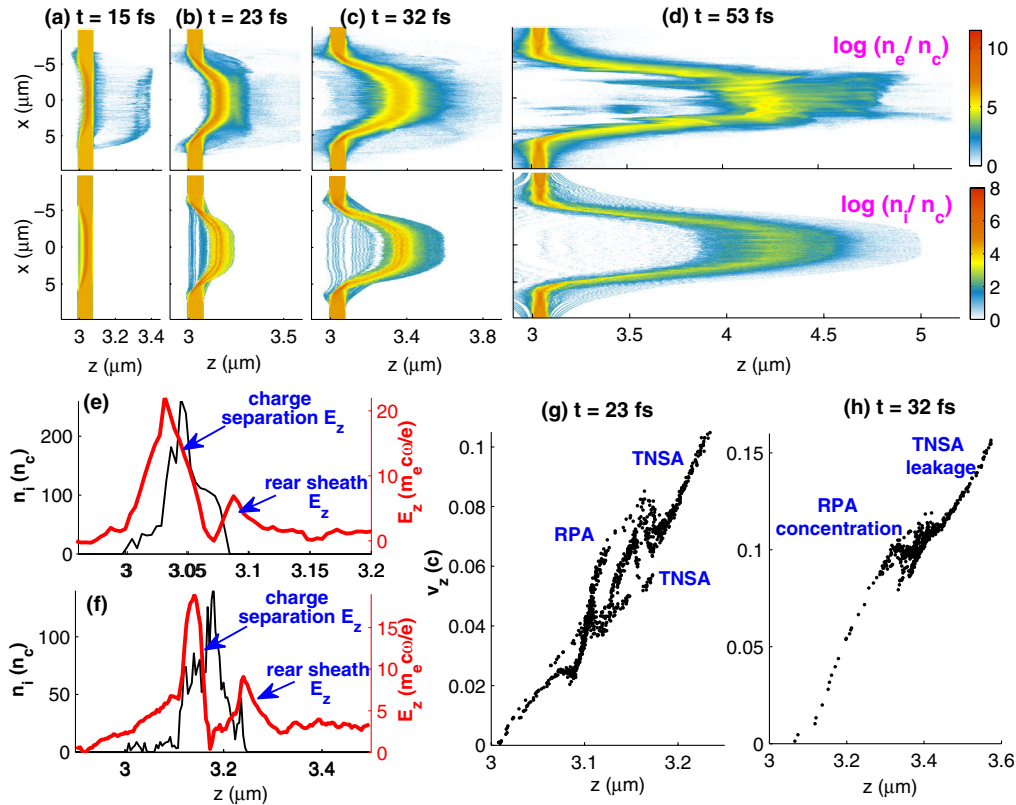


FIG. 2 (color online). (a)–(d) Electron (n_e) and C^{6+} (n_i) densities at, respectively, $t = 15, 23, 32$, and 53 fs for a 80 nm fully ionized carbon foil irradiated by LP laser pulses at intensity $I_0 = 3 \times 10^{21} \text{ W/cm}^2$, wavelength $\lambda = 1.0 \mu\text{m}$, and duration $\tau_L = 20\tau_0 = 67 \text{ fs}$, where the foil electron density is $600n_c$; (e), (f) the longitudinal profile of n_i and electrostatic field E_z at $t = 15$ and 23 fs , which shows that ions are accelerated by a hybrid effect of the charge separation and rear sheath fields, i.e., undergoing hybrid RPA-TNSA; (g), (h) C^{6+} phase space distributions at $t = 23$ and 32 fs for particles with $|x| < 2 \mu\text{m}$, which show typical dynamics of hybrid RPA-TNSA acceleration in the LS stage.

$E_{\text{sheath}} = 6m_e c \omega / e = 1.93 \times 10^{13}$ V/m is induced which accelerates ions from the foil rear side. On the other hand, electrons at the front side are pushed inward by the non-oscillating radiation pressure and pile up in a compressed layer, leading a much more intense charge separation electric field $E_{\text{separation}} = 22m_e c \omega / e = 7.0 \times 10^{13}$ V/m, seen in Fig. 2(e) as well, which accelerates ions from the foil front side.

Figure 2(b) corresponds to the transition time when HB reaches the foil rear surface. We see that the compressed electron layer catches up with the rear hot-electron sheet; correspondingly, the ions that undergo HB RPA also keep up with those at the rear which experience TNSA because $E_{\text{separation}} > E_{\text{sheath}}$. At this stage, a majority of ions are bunched together undergoing RPA, but they are preceded by a small number of TNSA ions. This ion bunch is pushed by a double-peaked electric field shown in Fig. 2(f), a combination of the front surface charge separation field and rear sheath field, undergoing a hybrid LS-TNSA acceleration. Since the condition (4) is satisfied, $E_{\text{separation}}$ remains always larger than E_{sheath} , resulting in quasimonoenergetic ion beams in Fig. 2(c). This ion hybrid acceleration dynamics in the LS stage can also be seen in their phase space evolutions from Figs. 2(g) and 2(h): A majority of ions undergo typical RPA “rolling up” and concentration, whereas a small number of ions precede like a leakage due to TNSA.

Both Figs. 3(a) and 3(b) show plots of C^{6+} density at $t = 83$ fs when the laser pulse ends and C^{6+} energy spectra at $t = 53, 68$, and 83 fs. We see that a quasimonoenergetic C^{6+} beam with a well-defined peak energy of 1.26 GeV, density $4n_c$, and divergence $< 5^\circ$ is obtained at $t = 83$ fs due to dominant RPA. The low-energy trailing part in the spectrum originates from an extended area (wings) of the foil around the laser focal spot, where the laser field is weak with the condition (4) violated and the transverse instabilities [20] grow up quickly, so most likely TNSA dominates. Figures 3(c) and 3(d) show plots for a foil thickness of 200 nm where the condition (4) is violated. We can see that the energy spectrum shows no pronounced peak, because RPA does not play a dominant role in the hybrid acceleration.

In order to emphasize the practical utility of this new regime, we present the scaling of the required foil thickness l_0 with the laser power in Fig. 3(e), where the laser pulse duration 66 fs is fixed and the same foil target density as above is chosen. We can see that the RPA-dominated regime can be achieved by using ultrathin foils (tens of nanometers) on contemporary high-contrast petawatt or subpetawatt laser systems. Note that the trapezoidal temporal pulse profile chosen in the simulation is intended only to show the exact validity of condition (4) as the latter is derived by assuming a is constant. The regime itself, in principle, is not sensitive to a laser pulse profile and requires only the general condition $v_{i,\text{front}} > v_{i,\text{rear}}$ [from Eqs. (2) and (3)] to be satisfied. Furthermore, a laser

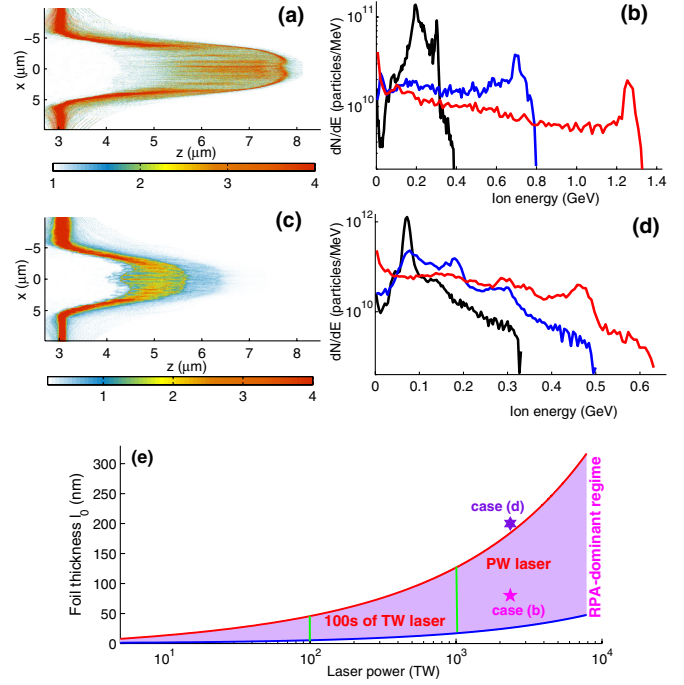


FIG. 3 (color online). (a) C^{6+} density at $t = 83$ fs when the laser pulse ends for the acceleration in Fig. 2. (b) C^{6+} energy spectra at $t = 53$ (black line), 68 (blue line), and 83 fs (red line) for Fig. 2, which have a well-defined peak as RPA is dominant in the hybrid acceleration. (c),(d) C^{6+} density and spectra obtained by increasing foil thickness to $l_0 = 200$ nm with the condition (4) violated, showing no pronounced spectral peak as RPA is nondominant. (e) shows the scaling of the required foil thickness for the RPA-dominated regime with the laser power by fixing laser pulse duration at 66 fs, where the foil density is the same as in Fig. 2. The corresponding points of the spectral cases of (b) and (d) are, respectively, marked in (e).

contrast in excess of 10^{10} is required for the regime; otherwise, the prepulse heating will lead to rapid foil disassembly and the violation of condition (4) and, depending on contrast level, result either in reduced efficiency of TNSA [21] or in no significant acceleration. Contrasts exceeding 10^{10} can be achieved by using currently available lasers with the addition of plasma mirrors [22] or, alternatively, via the deployment of parametric amplification techniques [23].

A typical experimental target is always a solid foil contaminated with lighter ions (carbon and hydrogen). As expected [9,12–14], a multispecies target helps to stabilize LS RPA of the lighter ion species so that a more pronounced spectral peak can be achieved. Figure 4 shows the ion density map and energy spectra by choosing a copper foil with carbon contaminants, where the density ratio between Cu^{24+} and C^{6+} is $5:1$. Their total mass densities and other parameters are the same as above. We see that a more pronounced monoenergetic C^{6+} beam is obtained with density $3n_c$, divergence $< 5^\circ$, and higher peak energy 1.44 GeV (120 MeV/u), whereas the Cu^{24+} species undergo Coulomb explosion resulting in a

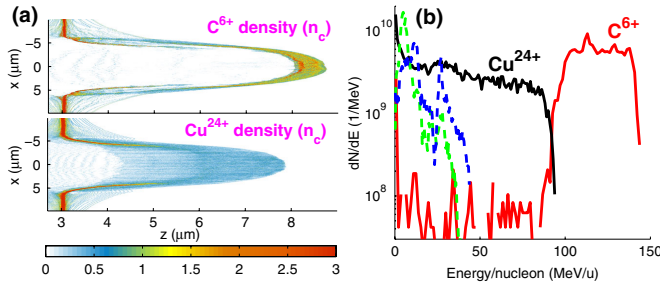


FIG. 4 (color online). Ion acceleration from a 80 nm fully ionized copper-carbon mixed foil target by LP laser pulse, where the density ratio between Cu^{24+} and C^{6+} is 5:1. The total mass density and other parameters are the same as those in Fig. 2. (a) is the plot of both Cu^{24+} and C^{6+} densities at $t = 83$ fs when the laser pulse ends; (b) shows the corresponding energy spectra. The dashed blue and green lines are the energy spectra for C^{6+} in the cases of thicker foil with $l_0 = 200$ and 800 nm, respectively.

broadened energy spectrum due to less comoving electrons. Here the particle number (dN/dE) is about 10^{10} MeV^{-1} , much larger than obtained, for example, in enhanced TNSA schemes for monoenergetic ion beam production [4].

In summary, we have reported a new RPA-dominated regime of quasimonoenergetic ion beam generation from ultrathin foils for LP laser pulses at intensities 2 orders of magnitude lower than previously predicted [10]. A criterion for this regime has been identified analytically and verified by 2D PIC simulations, which indicate that the RPA-dominated regime can be achieved with LP laser pulses by using either a sufficiently thin foil target or a long enough laser pulse. It is shown by 2D PIC simulations that quasimonoenergetic C^{6+} ion beams with peak energy about 1.26 GeV, particle number 10^{11} , and beam divergence $< 5^\circ$ are obtained from 80 nm carbon foils by LP laser pulses at intensities of $10^{21} \text{ W cm}^{-2}$.

We acknowledge helpful discussions with A. Macchi, J. Schreiber, and B. Dromey. The work is supported by EPSRC (Grants No. EP/E035728/1 and No. EP/D/06337X/1). Computing resources from *e*-Science facility of RAL-STFC are also acknowledged.

- [1] M. Borghesi *et al.*, *Fusion Sci. Technol.* **49**, 412 (2006).
- [2] V. Malka *et al.*, *Nature Phys.* **4**, 447 (2008).
- [3] E. L. Clark *et al.*, *Phys. Rev. Lett.* **84**, 670 (2000); A. Maksimchuk *et al.*, *ibid.* **84**, 4108 (2000); R. A. Snavely *et al.*, *ibid.* **85**, 2945 (2000).
- [4] B. M. Hegelich *et al.*, *Nature (London)* **439**, 441 (2006).
- [5] A. Macchi *et al.*, *Phys. Rev. Lett.* **94**, 165003 (2005).
- [6] A. P. L. Robinson *et al.*, *New J. Phys.* **10**, 013021 (2008).
- [7] B. Qiao *et al.*, *Phys. Rev. Lett.* **102**, 145002 (2009).
- [8] A. Macchi, S. Veghini, and F. Pegoraro, *Phys. Rev. Lett.* **103**, 085003 (2009).
- [9] B. Qiao *et al.*, *Phys. Rev. Lett.* **105**, 155002 (2010).
- [10] T. Esirkepov *et al.*, *Phys. Rev. Lett.* **92**, 175003 (2004).
- [11] H. B. Zhuo *et al.*, *Phys. Rev. Lett.* **105**, 065003 (2010).
- [12] A. P. L. Robinson *et al.*, *Plasma Phys. Controlled Fusion* **51**, 024004 (2009); **51**, 095006 (2009).
- [13] T. P. Yu *et al.*, *Phys. Rev. Lett.* **105**, 065002 (2010).
- [14] B. Qiao *et al.*, *Phys. Plasmas* **18**, 043102 (2011).
- [15] P. Gibbon, *Short Pulse Laser Interactions with Matter* (Imperial College, London, 2005).
- [16] P. Mora, *Phys. Rev. Lett.* **90**, 185002 (2003).
- [17] J. Fuchs *et al.*, *Nature Phys.* **2**, 48 (2006).
- [18] B. Chrisman *et al.*, *Phys. Plasmas* **15**, 056309 (2008).
- [19] Y. Sentoku *et al.*, *Phys. Plasmas* **10**, 2009 (2003).
- [20] F. Pegoraro and S. V. Bulanov, *Phys. Rev. Lett.* **99**, 065002 (2007).
- [21] J. Fuchs *et al.*, *Phys. Rev. Lett.* **99**, 015002 (2007).
- [22] B. Dromey *et al.*, *Rev. Sci. Instrum.* **75**, 645 (2004).
- [23] F. Tavella *et al.*, *Opt. Express* **14**, 12 822 (2006).