

Validation of satellite soil moisture in the absence of *in situ* soil moisture: the case of the Tropical Yankin Basin

Djigbo F. Badou^{1,*}, Bernd Diekkrüger², Carsten Montzka³

¹ National Water Institute, University of Abomey-Calavi, 01 BP. 526 Cotonou, Benin

fdbadou@gmail.com

² Department of Geography, University of Bonn, Meckenheimer Allee 166, 53115 Bonn, Germany

b.diekkruenger@uni-bonn.de

³ Forschungszentrum Jülich, Institute of Bio- and Geosciences: Agrosphere (IBG-3), Leo-Brandt-Strasse, 52425 Jülich, Germany, c.montzka@fz-juelich.de

DOI: <http://dx.doi.org/10.4314/sajg.v7i3.3>

Abstract

Soil moisture is known to be important in hydrology, agronomy, flood and drought forecasting. Acquisition of in situ soil moisture data is time consuming, costly, and does not cover the scale required for basin analysis. The consideration of remotely-sensed soil moisture is therefore promising. However, considering the limitations of satellite data, there is a need to check their validity prior to their utilization for impact studies. This, in turn, poses a problem in the absence of in situ soil moisture. The present study suggests a methodology for testing the validity of remotely-sensed soil moisture without in situ soil moisture. Hydrological models with a detailed soil moisture routine are calibrated and validated with measured stream flows. The most behavioural solutions of modelled soil moistures are averaged, and used as proxy measurements. This methodology was applied to the Yankin Basin (8,171 km²), a tributary of the Niger River Basin. The soil moistures of three hydrological models (UHP-HRU, SWAT and WaSiM) used as proxy were compared with the daily ESA-CCI soil moisture for a four year period (2005-2008). The coefficient of determination (R²), bias and visual inspection were used as quality criteria. A rather small bias ranging from -0.01cm³/cm³ (SWAT & UHP-HRU) to -0.04cm³/cm³ (WaSiM & UHP-HRU) was determined as well as good R² varying between 0.71 (SWAT & UHP-HRU) and 0.81 (WaSiM & SWAT & UHP-HRU). The ESA-CCI soil moisture was therefore judged as reliable for the study area. More important, this research shows that averaging soil moistures from different hydrological models provides valuable proxy measurements for testing the reliability of satellite soil moistures.

1. Introduction

Soil moisture is a key component of the environment to consider in hydrological modelling, agricultural production, flood and drought forecasting, and adaptation to climate change. Knowledge of soil moisture pattern and dynamics is thus an indispensable information. *In situ* observations and satellite products are the two common sources of soil moisture information (Mohanty *et al.*, 2017). While ground-based soil moisture provides point scale information and is

appropriate for studies at small scales, satellite soil moisture products, due to their large spatial coverage, offer countless of applications at regional, continental and global scales. Also, remotely sensed soil moisture is readily more available and accessible than *in situ* measurements which make them more attractive.

However, prior to their use for impact studies, the validity and accuracy of satellite data must be evaluated. Checking the quality of satellite soil moisture products can “easily” be envisaged when *in situ* soil moisture measurements are available. But even in that case, the comparison is not straightforward (Colliander, Jackson, *et al.*, 2017; Montzka *et al.*, 2017). Actually, one of the main criticisms on satellite soil moisture is their coarse resolution (25 to 50 km) and their scale mismatch with *in situ* observations (Wanders *et al.*, 2012). Piles *et al.* (2011) suggested a downscaling scheme to cope with this shortcoming of remotely sensed soil moisture. Several further methods have been developed to enhance the spatial resolution of coarse global soil moisture products (Verhoest *et al.*, 2015; Im *et al.*, 2016; Colliander, Fisher, *et al.*, 2017; Jin *et al.*, 2017; Montzka *et al.*, 2018). Another possibility is the use of a distributed water balance model which allows the “upscaling” of *in situ* observations to match the scale of satellite products (e.g. Rötzer *et al.* 2014). An example of such possibility is given in the study of Wanders *et al.* (2012) who used the Soil-Water-Atmosphere-Plant model (SWAP, Kroes *et al.*, 2008; Van Dam, 2000), a distributed unsaturated zone model to “upscale” *in situ* soil moisture to the scale of the SMOS (Soil Moisture and Ocean Salinity), ASMR-E (Advanced Microwave Scanning Radiometer) and ASCAT(Advanced Scatterometer) soil moisture products (The spatial resolution of SMOS, ASCAT and ASMR-E products was 35-50 km, 25 km and 36-54 km respectively (Wanders *et al.*, 2012)

So far, all satellite soil moisture validation studies made use of *in situ* soil moisture or a combination of *in situ* and modelled soil moisture (Albergel *et al.*, 2009; Albergel *et al.*, 2011; Brocca *et al.*, 2010; Draper *et al.*, 2009; Lacava *et al.*, 2012; Su *et al.*, 2011; Wagner *et al.*, 2007). As many regions in the world are poorly gauged or ungauged, the question which then arises is how to check the quality of remotely sensed soil moisture for data scarce regions.

To cope with this issue of *in situ* soil moisture availability, the ISMN (International Soil Moisture Network, <http://ismn.geo.tuwien.ac.at/>) has been set up to offer a web portal where standardised *in situ* soil moisture can be acquired (Dorigo *et al.*, 2011). If the initiative comprises more than 500 stations worldwide, there are some regions with very poor or no soil moisture monitoring network especially in Africa and Latina America. In West Africa, for instance, according to Albergel *et al.* (2011) and Dorigo *et al.* (2011), the network of the AMMA (African Monsoon Multidisciplinary Analysis) project made up of 10 stations installed over three sites is the sole network.

Hence, an alternative have to be found for checking the quality of satellite soil moisture products for ungauged areas. This study suggests a framework to test the validity of remotely-sensed soil moisture without *in situ* soil moisture.

2. Materials and methods

As displayed in Figure 1, the idea is the use of hydrological modelling to generate modelled soil moisture taken as reference data for the validation of satellite soil moisture. The principle is implemented in three steps. The first step is the calibration and validation of hydrological models with stream flow data which, generally, are available for most catchments. Such models should have a detailed soil moisture routine otherwise soil moisture cannot be extracted. A calibration and validation (and not only a calibration) ensures that the output of the models are reliable (Biondi *et al.*, 2012). As hydrological models are *per se* uncertain (Pappenberger and Beven, 2006; Andreassian *et al.*, 2009; Juston *et al.*, 2012), we suggest that not only one single model but instead several models be used (Jiang *et al.*, 2007; Foley, 2010; Badou, 2016). The second stage is the extraction of modelled soil moisture. Hydrological models deliver a range of solutions (and not a single one) corresponding to acceptable performance criteria, and acceptable representation of processes known as behavioural solutions (Beven and Binley, 1992; Abbaspour, 2008; Krauß, 2013). To guarantee that the modelled soil moisture to be taken as reference is the “best” choice, a safeguard would be to select the soil moisture of the most behavioural solutions. The last step is the actual comparison of remotely-sensed and modelled soil moisture. To deal with the uncertainty inherent to any hydrological model output that might bias the comparison, we further propose that extracted soil moisture from the candidate models be combined (use of average, percentiles or confidence levels). A multi-objective validation using a number of performance criteria such as the coefficient of determination (R^2), bias, root mean squared error (RMSE) and also visual inspection is necessary. It is worth noting that the suggested methodology is only recommended for the validation of satellite soil moisture over hydrological basins for which stream flow data are readily available (Dettinger and Diaz, 2000). It cannot be applied for geographical areas for which hydrological models cannot be calibrated and validated.

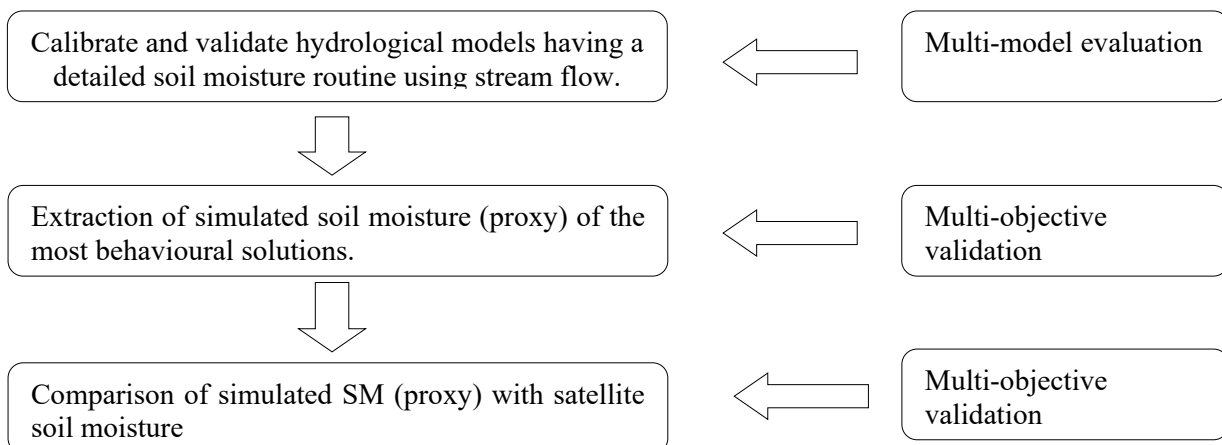


Figure 1. Conceptual framework for the validation of satellite soil moisture without *in situ* soil moisture

3. Case study: Validation of the ESA-CCI soil moisture for the Yankin Basin

3.1. Overview of the test basin

The Alibori (427 km) is the largest affluent of the Niger River basin in Benin Republic (Figure 2). It originates on the eastern side of the Atacora's chain at 410 m.a.s.l in the commune of Péhunco and at mid-stream forms the Yankin Basin (8,171 km²).

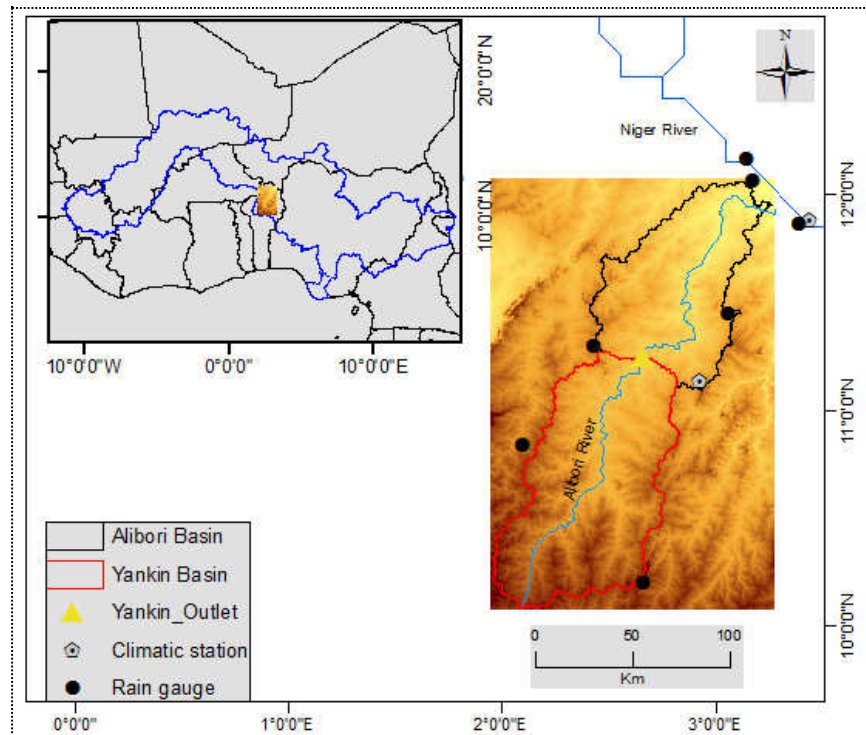


Figure 2. Overview of the Yankin basin in the Niger river basin located in Benin Republic

The vegetation is dominated by savannah, followed by farms and fallows then forest (CILSS, 2016). The climate is Sudano-sahelian with only one rainy season (April to October) and annual rainfall vary between 700 mm and 1250 mm while mean temperature is 28 °C. Three major soil types are found in the Yankin Basin: Albic Plinthosol, Haplic Lixsol, and Ferric and Albic Acrisol.

3.2. Hydrological models

Three hydrological models having a detailed soil moisture routine, the Universal Hydrological Program – Hydrological Response Unit, UHP-HRU (Giertz et al., 2010), Soil Water Assessment Tool, SWAT (Arnold et al., 1998) and Water balance Simulation Model, WaSIM (Schulla, 1997; Schulla, 2012) were used. UHP-HRU is a conceptual, semi-distributed water balance model for assessing hydrological processes (surface runoff, interflow, baseflow, aquifer recharge, etc.). SWAT is also a conceptual, semi-distributed model developed for assessing the impacts of climate, land use and agricultural practices on water quality, water quantity and sediment. WaSiM is a physically-based and distributed model used for the simulation of water balance. A brief description

of the models is given in Table 1. A more detailed description of each of these models can be found in Cornelissen, Diekkrüger and Giertz (2013).

The three models require the same input data (see Table 2) which are a digital elevation model, land use map related properties, soil map related properties, climate variables (rainfall, temperature, wind speed, humidity, and radiation). The Penman-Monteith method (Penman, 1956; Monteith, 1965) was used to compute potential evapotranspiration for the three models. Regardless of the model, stream flow is computed as the sum of surface runoff, interflow and baseflow.

Table 1. Comparison of the hydrological models used in this study with an emphasis on the soil moisture

	WaSiM	SWAT2009	UHP-HRU
Model type	Physically-based and distributed	Conceptual and semi-distributed	Conceptual and semi-distributed
Spatial resolution	Grid based spatial discretisation	Fixed HRU	Variable HRU
Soil module	Richards' equation; soil is divided into vertical layers.	Tipping bucket; soil is divided into soil layers	Linear storage; soil is divided into root and unsaturated zones.
Simulated soil moisture	For user-specified layers	For each layer but only provided as output as integral of soil profile	For the root and unsaturated zones.
Stream flow	Sum of surface runoff, interflow and baseflow	Sum of surface runoff, lateral flow and baseflow	Sum of surface runoff, interflow and baseflow

Using stream flow data, Badou (2016) calibrated and validated the three models for the 1984-1988 and 2005-2008 periods respectively. The calibration and validation were successful for three criteria, the Nash-Sutcliffe efficiency, NSE (Nash and Sutcliffe, 1970), Kling-Gupta efficiency, KGE (Gupta *et al.*, 2009) and coefficient of determination, R^2 and were unsatisfactory to very good for the percent bias criterion, PBIAS (Gupta *et al.*, 1999).

Table 2. Summary of the data used for the study, modified after Badou (2016)

Data	Resolution (scale)	Relevance	Sources
	Time period		
Climatic	12 stations 1984-2008		DMN Benin
Topographic	30 x 30m	Delineation of subbasins and HRU, topographic parameters	ASTER GDEM
Land use	1:50,000 1979	HRU delineation, root depth, leaf area index, albedo, interception factor, etc.	CENATEL
Soil	1:200,000 1978	Texture, bulk density, hydraulic conductivity, etc.	ORSTOM
Streamflow	01 station 1984-2008	To generate simulated soil moisture used as proxy	DGEau
Soil moisture	0.25°x 0.25° Topmost 2cm 2005-2008		ESA-CCI

ASTER GDEM stands for Advanced Spaceborne Thermal Emission and Reflection Radiometer Global Digital Elevation Model, CENATEL for Centre National de Télédétection et de Suivi Ecologique du Bénin, DMN for Direction Météorologique Nationale, ESA CCI for European Space Agency Climate Change Initiative and ORSTOM for Office pour la Recherche Scientifique et Technique d'Outre Mer (Office for Overseas Scientific and Technical Research; now IRD).

The soil moisture data of the best solution of each of the three models were extracted for comparison with the ESA-CCI (European Space Agency Climate Change Initiative <http://www.esa-cci.org/>) soil moisture for the validation period. As shown in Table 2, the remotely-sensed product has a spatial resolution of 0.25°x 0.25° and is given for the topmost 2cm at the daily time step. More details on the ESA-CCI soil moisture can be found in Liu *et al.* (2012). While for WaSiM the soil moisture of the uppermost 2cm layer was extracted, the soil moisture of the SWAT and UHP-HRU models were rescaled using straightforward proportions. To test the benefit of combining soil moistures from two or more models instead of using that of one single model (see Section 2), modelled soil moistures were averaged for all possible combinations (SWAT and UHP-HRU/ SWAT and WaSiM/ UHP-HRU and WaSiM/ SWAT, UHP-HRU and WaSiM). We, then, computed and analysed the difference between modelled soil moistures (both for individual models and their combinations) and satellite soil moisture.

3.3. Results

Modelled and remotely-sensed soil moistures were compared using graphical technique and quantitative metrics.

3.3.1. Graphical technique

Figure 3 and Figure 4 display the graphs of the comparison of modelled and ESA-CCI soil moisture for the study area.

When modelled soil moisture from individual model is used, UHP-HRU seems the best case of agreement between modelled and satellite soil moisture especially for the years 2007 and 2008. Satellite data underestimate SWAT soil moisture and lead to high discrepancies (nearly $0.2 \text{ cm}^3/\text{cm}^3$) for the years 2005, 2007 and 2008 on the one hand and overestimate WaSiM values with a difference of $-0.15 \text{ cm}^3/\text{cm}^3$ on the other hand.

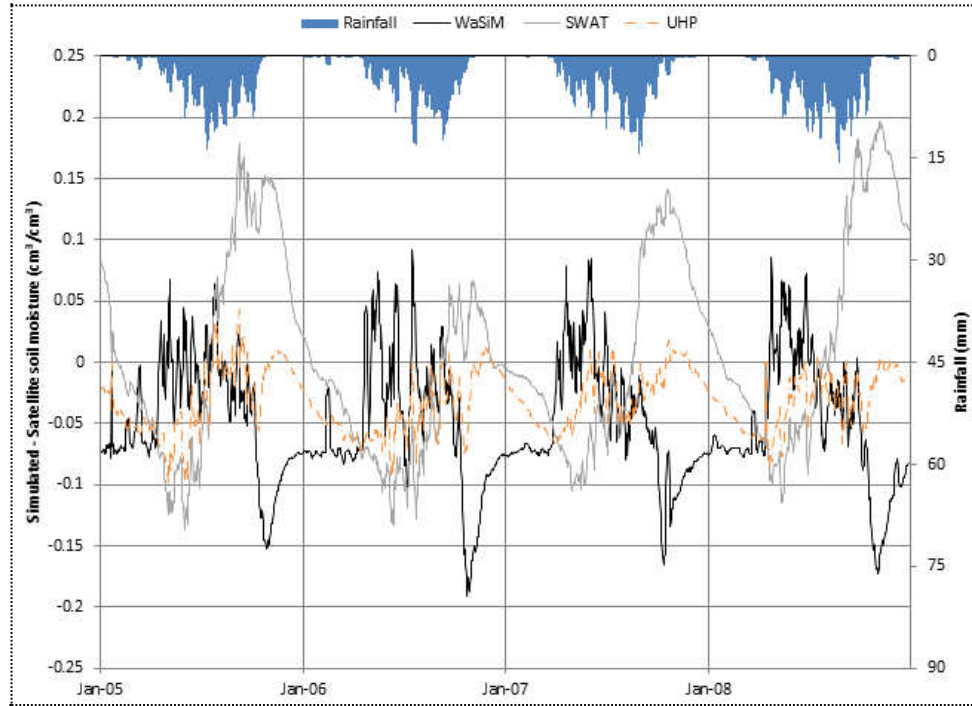


Figure 3. Difference between catchment averaged modelled and satellite soil moistures for the WaSiM, SWAT and UHP-HRU models.

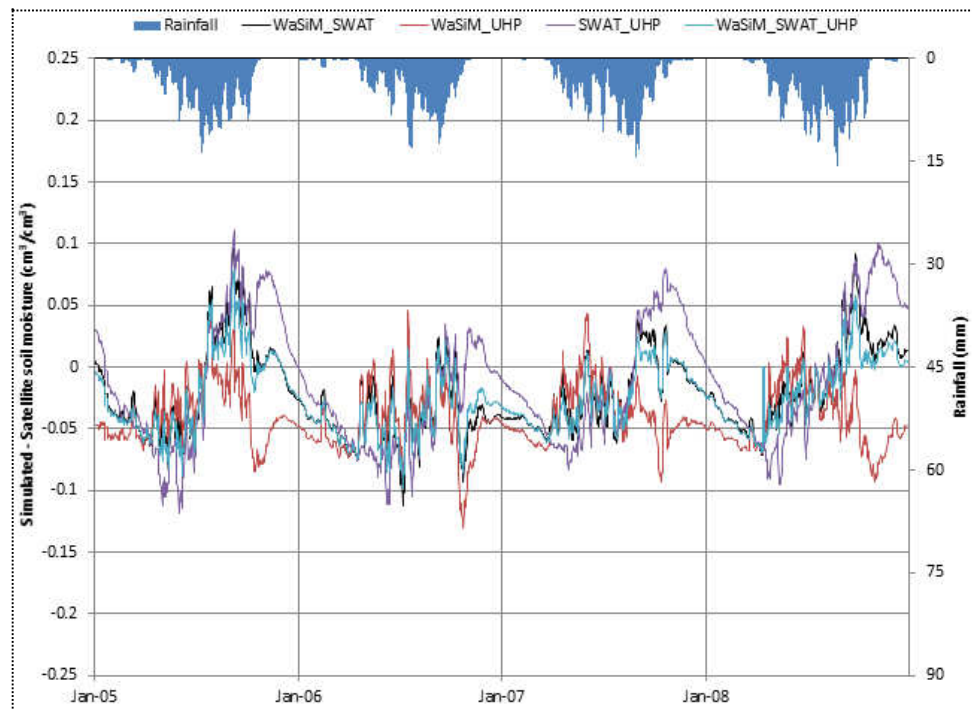


Figure 4. Difference between catchment averaged modelled and satellite soil moistures for the combinations of the WaSiM, SWAT and UHP-HRU models.

In comparison with Figure 3, Figure 4 clearly shows that with the combination of models soil moisture, results are improved. The best outcome is obtained when the soil moisture of the three models are averaged. The graph “WaSiM_SWAT_UHP” shows discrepancies barely greater than $0.05 \text{ cm}^3/\text{cm}^3$ (in absolute values) for 2007 and 2008, and lesser than $0.1 \text{ cm}^3/\text{cm}^3$ (in absolute values) for 2005-2006. Likewise, averaging WaSiM and SWAT outputs lead to small discrepancies between modelled and satellite soil moisture for 2007, and quite similar results for 2008 and 2005-2006 but to a lesser extent than in the case of the combination of the three models. With the combination of WaSiM and UHP-HRU, negative biases (-0.08 to $-0.13 \text{ cm}^3/\text{cm}^3$) are found for each of the four year of the comparison. The poorest fit was obtained for the combination of SWAT and UHP-HRU with absolute biases of more or less $0.1 \text{ cm}^3/\text{cm}^3$ except for 2007. However, this poor fit is, by far, better than the fit obtained when SWAT and WaSiM soil moisture are taken individually.

3.3.2. Quantitative measures

Table 3 and Table 4 showcase the quantitative metrics of the comparison between modelled and satellite soil moisture when single model outputs are considered and when models outputs are combined respectively. An analysis of these tables reveals that with the combination of models soil moisture improve the results especially with respect to the R^2 criterion.

Considering the bias metric, the lowest absolute value ($0.01 \text{ cm}^3/\text{cm}^3$) is determined for SWAT while the highest value ($-0.048 \text{ cm}^3/\text{cm}^3$) corresponds to the comparison with WaSiM soil moisture. Combined models and satellite soil moisture yield smaller biases with a maximum bias of $-0.039 \text{ cm}^3/\text{cm}^3$ against $-0.048 \text{ cm}^3/\text{cm}^3$ for the WaSiM model taken individually. Concerning individual models, the lowest and highest biases are obtained for SWAT and WASIM soil moistures respectively. Averaging modelled soil moistures, the lowest bias is given for the combination SWAT and UHP-HRU while the highest bias corresponds to the combination of UHP-HRU and WaSiM. Thus, the combination of modelled soil moistures seems to be linear with respect to the bias criterion.

Table 3. Comparison of modelled and remotely-sensed soil moisture for the WaSiM, SWAT and UHP-HRU models.

Model	UHP-HRU	SWAT	WaSiM
Mean modelled SM (cm^3/cm^3)	34.4	45.77	29.52
Mean remotely-sensed SM (cm^3/cm^3)	42.85	42.85	42.85
Mean bias (cm^3/cm^3)	-0.03	0.01	-0.048
R^2	0.83	0.57	0.54

Table 4. Comparison of modelled and remotely-sensed soil moisture for the combinations of the WaSiM, SWAT and UHP-HRU models.

Model	WaSiM_SWAT	WaSiM_UHP	SWAT_UHP	WaSiM_SWAT_UHP
Mean modelled SM (cm^3/cm^3)	45.743	38.861	48.939	44.514
Mean remotely-sensed SM (cm^3/cm^3)	42.850	42.850	42.850	42.850
Mean bias (cm^3/cm^3)	-0.019	-0.039	-0.010	-0.023
R^2	0.77	0.77	0.71	0.81

With respect to the coefficient of determination, very good score (0.83) is obtained for the comparison of remotely-sensed soil moisture with soil moisture modelled using UHP-HRU while the comparison with the two other models yield only satisfactory result (0.54 and 0.57). A minimum R^2 value of 0.71 is obtained for the comparison with averaged models soil moisture showing the benefit of averaging models soil moisture. Considering models individually, the highest and lowest R^2 values are obtained for the comparison with UHP-HRU and WASIM soil moistures respectively. Averaging modelled soil moistures, the highest R^2 is given for the comparison with WaSiM and SWAT soil moistures while the lowest corresponds to the comparison with SWAT and UHP-HRU. Hence, the combination of models seems to be non-linear with respect to the R^2 measure of goodness of fit.

3.4. Discussion

When the ESA-CCI soil moisture product is compared with averaged modelled soil moistures the discrepancies are smaller and the correlations higher than when the comparison is done with soil moisture from individual models alone. When modelled soil moisture from either SWAT or WaSiM model were compared to satellite soil moisture, the ESA-CCI soil moisture was evaluated as poor (see Figure 3). Conversely, when soil moisture from the models are averaged and taken as a reference a better score is obtained and the ESA-CCI product is acceptable (see Figure 4 and Table 4). The combination of models soil moisture is more reliable because the soil moisture of the models taken individually are poorly correlated among themselves (see Figure 3) while the combined models soil moisture yield a good timing among themselves especially during the rainy season (see Figure 4). Differences between modelled soil moistures might emanate from the differences between soil moisture computation procedures of the individual models. UHP-HRU only simulates the water available for plants within the root zone, SWAT simulates the moisture of each user-specified layer but only provides it for the entire soil depth, and WaSiM simulates the soil moisture of user-specified layers (Table 1). The mismatch between the thicknesses of the ESA-CCI soil moisture (2 cm) and that of the modelled soil moistures which necessitated scaling down SWAT and UHP-HRU soil moistures to 2 cm (Section 3.2) might have also contributed to these differences. Hence, the largest discrepancies were obtained with the SWAT model whose soil moisture is provided for the entire soil depth (Figure 3). Combining hydrological models outputs

has been reported to improve the representativeness of the processes (Viney *et al.*, 2009). The fact that the correlation is higher when the soil moistures of the three models are averaged suggests that individual models weaknesses are compensated while their strengths are amplified. However, these are not a linear relationships.

The findings presented in this case study are partly consistent with previous studies on the validation of satellite soil moisture datasets. Albergel *et al.* (2011) analysed the reliability of the soil moisture products from the ECMWF (European Centre for Medium Range Weather Forecasts), ASCAT and SMOS for 200 stations located in the US, Europe, Australia and Africa including 6 stations from the AMMA stations located nearby the Yankin Basin. They found an R^2 of 0.42, 0.45 and 0.55 and a bias of 0.079, -0.074 and -0.179 for the SMOS, ECMWF and ASCAT respectively. Brocca *et al.* (2012) compared ASCAT and modelled soil moisture for the surface layer and the root zone in the Niccone basin in Central Italy. They reported a high correlation of 0.78 and 0.98 for the surface and root zone respectively. Leroux *et al.* (2013) assessed the quality of the SMOS soil moisture for the year 2010 by comparing it with ground data and three other soil moisture products ASCAT, VUA (AMSR-E soil moisture product from the Vrije University of Amsterdam) and ECMWF for four watersheds of the US. They found that the SMOS correlate reasonably well with *in situ* measurements and that the ECMWF and VUA have good correlations but high biases. The quality of the SMOS soil moisture of the year 2010 was also investigated by Sánchez *et al.* (2012) in comparison with observations from REMEDHUS network in Spain. A good fit was found between the two soil moisture products with an R^2 of 0.73 and a bias of $0.053 \text{ m}^3/\text{m}^3$. Similar results were found for the ESA CCI soil moisture product in China (An *et al.*, 2016) and East Africa (McNally *et al.*, 2016).

4. Conclusion

The validation of satellite soil moisture products is the focus of increasing studies. This research suggested a methodology applicable to hydrological basins where *in situ* soil moisture measurements are not available. The basic idea is to use water balance models to generate proxy measurements. Some safeguards are suggested to ensure that modelled soil moistures are reliable and less uncertain: a multi-model approach i.e. the use of several hydrological models, a multi-objective validation of these models, the extraction of the most behavioural solutions, and the combination of the extracted soil moistures (use of average, percentiles or confidence levels). The methodology was successfully tested for the ESA-CCI soil moisture product over the tropical Yankin Basin in Benin for which three hydrological models with detailed soil moisture modules (SWAT, UHP-HRU and WaSiM) were used. ESA-CCI and modelled soil moistures were compared for a period of four years, 2005-2008. It was found that:

- (i) using single model soil moistures as proxy measurements, the ESA-CCI soil moistures show small discrepancies (-0.1 to $0.05 \text{ cm}^3/\text{cm}^3$) only for the UHP-HRU derived soil moistures,

- (ii) using averaged modelled soil moistures as proxy measurements, maximum and minimum discrepancies values are reduced by nearly $0.1 \text{ cm}^3/\text{cm}^3$ in comparison to the case when models are considered individually; and
- (iii) the smallest discrepancies ($0.05 \text{ cm}^3/\text{cm}^3$) and best performance (R^2 of 0.81) are obtained when the soil moistures from the three models are averaged and used as proxy measurements.
- (iv) the combination of modelled soil moistures seems to be linear with respect to the bias accuracy metric but non-linear for the coefficient of determination (R^2).

Our results suggest that averaging soil moistures from different hydrological models provides valuable proxy measurements for testing the reliability of satellite soil moistures.

To further evaluate the robustness of the suggested methodology, research on different satellite soil moisture products and different hydrological models over areas of different climatic conditions is needed.

5. Acknowledgement

This study was conducted at the Graduate Research Programme on Climate Change and Water Resources of the University of Abomey-Calavi in the framework of the WASCAL Initiative and funded by German Ministry of Education and Research (BMBF).

6. Reference

- Abbaspour, K. C. (2008) 'SWAT-CUP2: SWAT Calibration and Uncertainty Programs - A User Manual. Department of Systems Analysis, Integrated Assessment and Modelling (SIAM), Eawag, Swiss Federal Institute of Aquatic Science and Technology, Duebendorf, Switzerland', p. 95.
- Albergel, C., de Rosnay, P., Gruhier, C., Muñoz-sabater, J., Hasenauer, S., Isaksen, L., Kerr, Y. and Wagner, W. (2011) *Evaluation of remotely sensed and modelled soil moisture products using global ground-based in situ observations*. Berkshire, England. Available at: <http://www.ecmwf.int/publications/>.
- Albergel, C., Rudiger, C., Carrer, D., Calvet, J.-C., Fritz, N., Naeimi, V., Bartalis, Z. and Hasenauer, S. (2009) 'An evaluation of ASCAT surface soil moisture products with in-situ observations in Southwestern France', *Hydrology and Earth System Sciences*, 13, pp. 115–124. Available at: www.hydrol-earth-syst-sci.net/13/115/2009/.
- An, R., Zhang, L., Wang, Z., Quaye-Ballard, J. A., You, J., Shen, X., Gao, W., Huang, L., Zhao, Y. and Ke, Z. (2016) 'Validation of the ESA CCI soil moisture product in China', *International Journal of Applied Earth Observation and Geoinformation*, 48, pp. 28–36. doi: <https://doi.org/10.1016/j.jag.2015.09.009>.
- Andreassian, V., Perrin, C., Berthet, L., Moine, N. Le, Lerat, J., Loumagne, C., Oudin, L., Mathevet, T., Ramos, M. H., Val, A., Andreassian, V., Perrin, C., Berthet, L., Moine, N. Le and Lerat, J. (2009) 'Crash tests for a standardized evaluation of hydrological models', *Hydrol. Earth Syst. Sci.*, 13, pp. 1757–1764.
- Arnold JG, Srinivasan R, Muttiah RS, W. J. (1998) 'Large area hydrologic modeling and assessment–Part 1: Model development', *Journal of the American Water Resources Association*, 34, pp. 73–89.
- Badou, D. F. (2016) *Multi-model evaluation of blue and green water availability under climate change in four non-Sahelian basins of the Niger River basin. Published PhD Thesis, pp.1-155*. University of

- Abomey-Calavi, Benin. Available at: <http://www.wascal-uac.org/new/thesis/DjigboFélicienBADOOU.pdf>.
- Beven, K. J. and Binley, A. (1992) 'The future of distributed models: Model calibration and uncertainty prediction.', *Hydrological Processes*, 6(3), pp. 279 – 298. doi: 10.1002/hyp.3360060305.
- Biondi, D., Freni, G., Iacobellis, V., Mascaro, G. and Montanari, A. (2012) 'Validation of hydrological models: Conceptual basis, methodological approaches and a proposal for a code of practice', *Physics and Chemistry of the Earth*, 42–44, pp. 70–76. doi: 10.1016/j.pce.2011.07037.
- Brocca, L., Melone, F., Moramarco, T., Wagner, W. and Hasenauer, S. (2010) 'ASCAT soil wetness index validation through in situ and modeled soil moisture data in central Italy', *Remote Sensing of Environment*, 114, pp. 2745–2755. doi: 10.1016/j.rse.2010.06.009.
- Brocca, L., Moramarco, T., Melone, F., Wagner, W., Hasenauer, S. and Hahn, S. (2012) 'Assimilation of Surface- and Root-Zone ASCAT Soil Moisture Products Into Rainfall – Runoff Modeling', *IEEE Transactions on Geoscience and Remote Sensing*, 50, pp. 2542–2555. doi: 10.1109/TGRS.2011.2177468.
- CILSS (2016) *Landscapes of West Africa - A Window On A Changing World*. U.S. Geological Survey EROS, 47914 252nd St, Garretson, SD 57030, United States. Available at: <https://eros.usgs.gov/westafrica/>.
- Colliander, A., Fisher, J. B., Halverson, G., Merlin, O., Misra, S., Bindlish, R., Jackson, T. J. and Yueh, S. (2017) 'Spatial Downscaling of SMAP Soil Moisture Using MODIS Land Surface Temperature and NDVI During SMAPVEX15', *IEEE Geoscience and Remote Sensing Letters*, 14(11), pp. 2107–2111.
- Colliander, A., Jackson, T. J., Bindlish, R., Chana, S., N., D., S.B.Kim, Cosh, M. J., Dunbar, B. J., Dang, L., L.Pashaian, Asanum, J., Aida, K., Berg, A., Rowlandson, T., Bosch, D., Caldwell, T., Caylor, K., D.Goodrich, ... and Yueh, S. (2017) 'Validation of SMAP surface soil moisture products with core validation sites', *Remote Sensing of Environment*, 191, pp. 215–231. doi: <https://doi.org/10.1016/j.rse.2017.01.021>.
- Cornelissen, T., Diekkrüger, B. and Giertz, S. (2013) 'A comparison of hydrological models for assessing the impact of land use and climate change on discharge in a tropical catchment', *Journal of Hydrology*, 498, pp. 221–236. doi: 10.1016/j.jhydrol.2013.06.016.
- Van Dam, J. C. (2000) *Field scale water flow and solute transport. SWAP model concepts, parameter estimation and case studies*. Published PhD thesis, pp.1-179. Wageningen University, Netherlands. Available at: <http://library.wur.nl/WebQuery/wurpubs/fulltext/121243>.
- Dettinger, M. D. and Diaz, H. F. (2000) 'Global Characteristics of Stream Flow Seasonality and Variability', *Journal of Hydrometeorology*, 1, pp. 289–310. doi: 0.1175/1525-7541(2000)001.
- Dorigo, W. A., Wagner, W., Hohensinn, R., Hahn, S., Paulik, C., Xaver, A., Gruber, A., Drusch, M., Mecklenburg, S., van Oevelen, P., Robock, A. and Jackson, T. (2011) 'The International Soil Moisture Network: a data hosting facility for global in situ soil moisture measurements', *Hydrology and Earth System Sciences*, 15, pp. 1675–1698. doi: 10.5194/hess-15-1675-2011.
- Draper, C. S., Walker, J. P., Steinle, P. J., de Jeu, R. A. M. and Holmes, T. R. H. (2009) 'An evaluation of AMSR- E derived soil moisture over Australia', *Remote Sensing of Environment*, 113, pp. 703–710. doi: 10.1016/j.rse.2008.11.011.
- Foley, A. M. (2010) 'Uncertainty in regional climate modelling: A review', *Progress in Physical Geography*, 34(5), pp. 647–670. doi: 10.1177/0309133310375654.
- Giertz, S., Hiepe, C., Steup, G., Sintondji, L., Diekkrüger, B. (2010) *Hydrological processes and soil degradation in Benin in: Speth, P., Christoph, M., Diekkrüger, B. (Eds.), Impacts of Global Change on the Hydrological Cycle in West and Northwest Africa*. Springer. Berlin.
- Gupta, H. V., Kling, H., Yilmaz, K. K. and Martinez, G. F. (2009) 'Decomposition of the mean squared error and NSE performance criteria: Implications for improving hydrological modelling', *Journal of Hydrology*, 377, pp. 80–91. doi: 10.1016/j.jhydrol.2009.08.003.
- Gupta, H. V., Sorooshian, S. and Yapo, P. O. (1999) 'Status of automatic calibration for hydrologic models: Comparison with multilevel expert calibration.', *Journal of Hydrologic Engineering*, 4(2), pp. 135–143. doi: [http://dx.doi.org/10.1061/\(ASCE\)1084-0699\(1999\)4:2\(135\)](http://dx.doi.org/10.1061/(ASCE)1084-0699(1999)4:2(135)).

- Im, J., Park, S., Rhee, J., Baik, J. and Choi, M. (2016) 'Downscaling of AMSR-E soil moisture with MODIS products using machine learning approaches', *Environmental Earth Sciences*, 75(15). doi: 10.1007/s12665-016-5917-6.
- Jiang, T., David, Y., Xu, C., Chen, X., Singh, V. P. and Chen, X. (2007) 'Comparison of hydrological impacts of climate change simulated by six hydrological models in the', *Journal of Hydrology*, 336, pp. 316–333. doi: 10.1016/j.jhydrol.2007.01.010.
- Jin, Y., Ge, Y., Wang, J., Chen, Y., Heuvelink, G. B. M. and Atkinson, P. M. (2017) 'Downscaling AMSR-2 Soil Moisture Data With Geographically Weighted Area-to-Area Regression Kriging', *IEEE Transactions on Geoscience and Remote Sensing*, 56(4), pp. 2362–2376. doi: 10.1109/TGRS.2017.2778420.
- Juston, J. M., Kauffeldt, A., Montano, B. Q., Seibert, J., Beven, K. J. and Westerberg, I. K. (2012) 'Smiling in the rain: Seven reasons to be positive about uncertainty in hydrological modelling. Invited Commentary', *Hydrological Processes*, 27(7), pp. 1117–1122. doi: 10.1002/hyp.9625.
- Krauß, T. (2013) *Robust parameter estimation – chances for hydrologic modelling in uncertain conditions. Published PhD thesis, pp. 1-131.* Technische Universität Dresden, Germany. Available at: https://www.researchgate.net/publication/259482759_Robust_parameter_estimation_-_chances_for_hydrologic_modelling_in_uncertain_conditions.
- Kroes, J. G., van Dam, J. C., Groenendijk, P., Hendriks, R. F. A. and Jacobs, C. M. J. (2008) 'SWAP version 3.2 -Theory description and user manual'. Alterra and Wageningen, pp. 1–284. Available at: <https://library.wur.nl/WebQuery/wurpubs/fulltext/176385>.
- Lacava, T., Matgen, P., Brocca, L., Bittelli, M., Pergola, N., Moramarco, T. and Tramutoli, V. (2012) 'A First Assessment of the SMOS Soil Moisture Product With In Situ and Modeled Data in Italy and Luxembourg', *IEEE Transactions on Geoscience and Remote Sensing*, 50, pp. 1612–1622. doi: 10.1109/TGRS.2012.2186819.
- Leroux, D., Kerr, Y. H., Albitar, A., Bindlish, R., Jackson, T. J., Berthelot, B. and Portet, G. (2013) 'Comparison between SMOS , VUA, ASCAT, and ECMWF soil moisture products over four watersheds in U.S.', *IEEE Transactions on Geoscience and Remote Sensing*, 52(3), pp. 1901–1906. doi: 10.1109/TGRS.2013.2252468.
- Liu, Y. Y., Dorigo, W. A., Parinussa, R. M., de Jeu, R. A. M., Wagner, W., McCabe, M. F., Evans, J. P. and van Dijk, A. I. J. M. (2012) 'Trend-preserving blending of passive and active microwave soil moisture retrievals', *Remote Sensing of Environment*, 123, pp. 280–297. doi: 10.1016/j.rse.2012.03.014.
- McNally, A., Shukla, S., Arsenault, K. R., Wang, S., Peters-Lidard, C. D. and Verdin, J. P. (2016) 'Evaluating ESA CCI soil moisture in East Africa', *International Journal of Applied Earth Observation and Geoinformation*, 48, pp. 96–109. doi: 10.1016/j.jag.2016.01.001.
- Mohanty, B. P., Cosh, M. H., Lakshmi, V. and Montzka, C. (2017) 'Soil Moisture Remote Sensing: State-of-the-Science', *Vadose Zone Journal*, 16(1), pp. 1–9. doi: 10.2136/vzj2016.10.0105.
- Monteith, J. L. (1965) 'Evaporation and environment', in *The State and Movement of Water in Living Organisms. XIXth Symposium of the Society for Experimental Biology*,. Swansea: Cambridge University Press, pp. 205–234.
- Montzka, C., Bogen, H. R., Zreda, M., Monerris, A., Morrison, R., Muddu, S. and Vereecken, H. (2017) 'Validation of Spaceborne and Modelled Surface Soil Moisture Products with Cosmic-Ray Neutron Probes', *Remote sensing*, 9(2:103), pp. 1–30. doi: 10.3390/rs9020103.
- Montzka, C., Rötter, K., Bogen, H. R., Sanchez, Ni. and Vereecken, H. (2018) 'A New Soil Moisture Downscaling Approach for SMAP, SMOS, and ASCAT by Predicting Sub-Grid Variability', *Remote sensing*, 10(3), p. 427. doi: 10.3390/rs10030427.
- Nash, J. E. and Sutcliffe, J. V. (1970) 'River flow forecasting through conceptual models - Part I - A discussion of principles.', *Journal of Hydrology*, 10(3), pp. 282–290. doi: doi.org/10.1016/0022-1694(70)90255-6.
- Pappenberger, F. and Beven, K. J. (2006) 'Ignorance is bliss: Or seven reasons not to use uncertainty

- analysis', *Water Resources Research*, 42(5), p. W05302. doi: 10.1029/2005WR004820.
- Penman, H. L. (1956) 'Evaporation: An introductory survey', *Netherlands Journal of Agricultural Science*, 4, pp. 7–29.
- Piles, M., Camps, A., Vall-llossera, M., Corbella, I., Panciera, R., Rüdiger, C., Kerr, Y. H. and Walker, J. (2011) 'Downscaling SMOS-Derived Soil Moisture Using MODIS Visible/Infrared Data', *IEEE Transactions on Geoscience and Remote Sensing*, 49, pp. 3156–3166. doi: 10.1109/TGRS.2011.2120615.
- Rötzer, K., Montzka, C., Bogen, H., Wagner, W., Kerr, Y. H., Kidd, R. and Vereecken, H. (2014) 'Catchment scale validation of SMOS and ASCAT soil moisture products using hydrological modeling and temporal stability analysis', *Journal of Hydrology*, 519, pp. 934–946. doi: 10.1016/j.jhydrol.2014.07.065.
- Sánchez, N., Martínez-fernández, J., Scaini, A. and Pérez-gutiérrez, C. (2012) 'Validation of the SMOS L2 Soil Moisture Data in the REMEDHUS Network (Spain)', *IEEE Transactions on Geoscience and Remote Sensing*, 50, pp. 1602–1611. doi: 10.1109/TGRS.2012.2186971.
- Schulla, J. (1997) *Hydrologische Modellierung von Flussgebieten zur Abschätzung der Folgen von Klimaänderungen. Published PhD thesis, pp.1-189*. Technische Universität Dresden, Germany. Available at: http://www.wasim.ch/downloads/doku/wasim/schulla_1997.pdf.
- Schulla J. (2012) *Model Description WaSiM*. Zürich, Switzerland. Available at: http://www.wasim.ch/downloads/doku/wasim/wasim_2012_en.pdf.
- Su, Z., Wen, J., Dente, L., Van der Velde, R., Wang, L., Ma, Y., Yang, K. and Hu, Z. (2011) 'The Tibetan Plateau observatory of plateau scale soil moisture and soil temperature (Tibet-Obs) for quantifying uncertainties in coarse resolution satellite and model products', *Hydrology and Earth System Sciences*, 15, pp. 2303–2316. doi: 10.5194/hess-15-2303-2011.
- Verhoest, N. E. C., van den Berg, M. J., Martens, B., Lievens, H., Wood, E. F., Pan, M., Kerr, Y. H., Bitar, A. Al, Tomer, S. K., Drusch, M., Vernieuwe, H., De Baets, B., Walker, J. P., Dumedah, G. and Pauwels, V. R. N. (2015) 'Copula-Based Downscaling of Coarse-Scale Soil Moisture Observations With Implicit Bias Correction', *IEEE Geoscience and Remote Sensing*, 53(6), pp. 3507–3521. doi: 10.1109/TGRS.2014.2378913.
- Viney, N.R., Bormann, H., Breuer, L., Bronstert, A., Croke, B.F.W., Frede, H., Gräff, T., Hubrechts, L., Huisman, J.A., Jakeman, A.J., Kite, G.W., Lanini, J. Leavesley, G., Lettenmaier, D.P., Lindström, G. Seibert, J., Sivapalan, M. and Willems, P. (2009) 'Assessing the impact of land use change on hydrology by ensemble modelling (LUCHEM) II: Ensemble combinations and predictions', *Advances in Water Resources*, 32(2), pp. 147–158.
- Wagner, W., Naeimi, V., Scipal, K., de Jeu, R. and Martínez-Fernández, J. (2007) 'Soil moisture from operational meteorological satellites', *Hydrogeology Journal*, 15, pp. 121–131. doi: 10.1007/s10040-006-0104-6.
- Wanders, N., Karssenbergh, D., Bierkens, M., Parinussa, R., de Jeu, R., Dam, J. Van and de Jong, S. (2012) 'Observation uncertainty of satellite soil moisture products determined with physically-based modeling', *Remote Sensing of Environment*, 127, pp. 341–356. doi: 10.1016/j.rse.2012.09.004.