



# Unusual chlorine partitioning in the 2015/16 Arctic winter lowermost stratosphere: observations and simulations

Sören Johansson<sup>1</sup>, Michelle L. Santee<sup>2</sup>, Jens-Uwe Grooß<sup>3</sup>, Michael Höpfner<sup>1</sup>, Marleen Braun<sup>1</sup>, Felix Friedl-Vallon<sup>1</sup>, Farahnaz Khosrawi<sup>1</sup>, Oliver Kirner<sup>4</sup>, Erik Kretschmer<sup>1</sup>, Hermann Oelhaf<sup>1</sup>, Johannes Orphal<sup>1</sup>, Björn-Martin Sinnhuber<sup>1</sup>, Ines Tritscher<sup>3</sup>, Jörn Ungermann<sup>3</sup>, Kaley A. Walker<sup>5</sup>, and Wolfgang Woiwode<sup>1</sup>

<sup>1</sup>Institute of Meteorology and Climate Research, Karlsruhe Institute of Technology, Karlsruhe, Germany

<sup>2</sup>Jet Propulsion Laboratory, California Institute of Technology, Pasadena, California, USA

<sup>3</sup>Institute of Energy and Climate Research – Stratosphere (IEK-7), Forschungszentrum Jülich, Jülich, Germany

<sup>4</sup>Steinbuch Centre for Computing, Karlsruhe Institute of Technology, Karlsruhe, Germany

<sup>5</sup>Department of Physics, University of Toronto, Toronto, Ontario, Canada

**Correspondence:** S. Johansson (soeren.johansson@kit.edu)

Received: 23 November 2018 – Discussion started: 22 February 2019

Revised: 27 May 2019 – Accepted: 28 May 2019 – Published: 27 June 2019

**Abstract.** The Arctic winter 2015/16 was characterized by cold stratospheric temperatures. Here we present a comprehensive view of the temporal evolution of chlorine in the lowermost stratosphere over the course of the studied winter. We utilize two-dimensional vertical cross sections of ozone ( $O_3$ ) and chlorine nitrate ( $ClONO_2$ ), measured by the airborne limb imager GLORIA (Gimballed Limb Observer for Radiance Imaging of the Atmosphere) during the POLSTRACC/GW-LCYCLE II/GWEX/SALSA campaigns, to investigate the tropopause region in detail. Observations from three long-distance flights in January, February, and March 2016 are discussed.  $ClONO_2$  volume mixing ratios up to 1100 pptv were measured at 380 K potential temperature in mesoscale structures. Similar mesoscale structures are also visible in  $O_3$  measurements. Both trace gas measurements are applied to evaluate simulation results from the chemistry transport model CLaMS (Chemical Lagrangian Model of the Stratosphere) and the chemistry–climate model EMAC (ECHAM5/MESSy Atmospheric Chemistry). These comparisons show agreement within the expected performance of these models. Satellite measurements from Aura/MLS (Microwave Limb Sounder) and SCISAT/ACE-FTS (Atmospheric Chemistry Experiment – Fourier Transform Spectrometer) provide an overview over the whole winter and information about the stratospheric situation above the flight altitude. Time series of these satellite measurements reveal unusually low hydrochloric acid (HCl) and  $ClONO_2$  at 380 K

from the beginning of January to the end of February 2016, while chlorine monoxide (ClO) is strongly enhanced. In March 2016, unusually rapid chlorine deactivation into HCl is observed instead of deactivation into  $ClONO_2$ , the more typical pathway for deactivation in the Arctic. Chlorine deactivation observed in the satellite time series is well reproduced by CLaMS. Sensitivity simulations with CLaMS demonstrate the influence of low abundances of  $O_3$  and reactive nitrogen ( $NO_y$ ) due to ozone depletion and sedimentation of  $NO_y$ -containing particles, respectively. On the basis of the different altitude and time ranges of these effects, we conclude that the substantial chlorine deactivation into HCl at 380 K arose as a result of very low ozone abundances together with low temperatures. Additionally, CLaMS estimates ozone depletion of at least 0.4 ppmv at 380 K and 1.75 ppmv at 490 K, which is comparable to other extremely cold Arctic winters. We have used CLaMS trajectories to analyze the history of enhanced  $ClONO_2$  measured by GLORIA. In February, most of the enhanced  $ClONO_2$  is traced back to chlorine deactivation that had occurred within the past few days prior to the GLORIA measurement. In March, after the final warming, air masses in which chlorine has previously been deactivated into  $ClONO_2$  have been transported in the remnants of the polar vortex towards the location of measurement for at least 11 d.

## 1 Introduction

The chemical reactions and processes that end catalytic ozone ( $\text{O}_3$ ) depletion by chlorinated substances in the stratosphere are well understood and explained (Solomon, 1999; von Clarmann, 2013, and references therein). Deactivation into chlorine nitrate ( $\text{ClONO}_2$ ) is usually the dominant process for removal of active chlorine in the Arctic winter stratosphere. This is in contrast to the Antarctic, where this process is hindered by the low availability of reactive nitrogen ( $\text{NO}_y$ ), which is caused by strong denitrification (Solomon, 1999; WMO, 2007, and references therein). The usual temporal evolution of the chlorine reservoirs in the end of Arctic winters is a sharp increase in  $\text{ClONO}_2$  followed by a slow increase in hydrochloric acid ( $\text{HCl}$ ; see, e.g., WMO, 2007, Fig. 4–10). However, there are exceptions to this general picture. For extraordinarily cold Arctic winters, enhanced chlorine activation and atypically strong chlorine deactivation into  $\text{HCl}$  have been reported (Santee et al., 2008b; Manney et al., 2011). This preferential deactivation into  $\text{HCl}$  can be caused by the lack of nitrogen dioxide ( $\text{NO}_2$ ) due to strong denitrification, which is usually observed in the Antarctic (e.g., Fahey et al., 1990; Portmann et al., 1996; Santee et al., 1998) but also occasionally in the Arctic (e.g., Waibel et al., 1999; Santee et al., 2000; Grooß et al., 2005). Additionally, cold temperatures and low  $\text{O}_3$  abundances can favor chlorine deactivation into  $\text{HCl}$  (Prather and Jaffe, 1990; Douglass et al., 1995; Grooß et al., 1997, 2011; Mickley et al., 1997). Douglass and Kawa (1999) also demonstrated that even small decreases in  $\text{O}_3$ , together with low stratospheric temperatures, can shift chlorine deactivation towards  $\text{HCl}$ . In this work, we use sensitivity model simulations to quantify these influences on chlorine deactivation for different altitude and time ranges.

Measurements of chlorine species have been performed from spaceborne instruments for the chlorine reservoirs  $\text{ClONO}_2$  (e.g., Zander et al., 1986; Roche et al., 1994; Höpfner et al., 2004; Nakajima et al., 2006; Wolff et al., 2008) and  $\text{HCl}$  (e.g., Beaver and Russell, 1998; Mahieu et al., 2008; Froidevaux et al., 2008b) and active chlorine such as chlorine monoxide ( $\text{ClO}$ ) (e.g., Waters et al., 1993; Glatthor et al., 2004; Urban et al., 2005; Santee et al., 2008a). These satellite measurements can provide global coverage over a long period of time. These observations have been used to investigate, for example, chlorine partitioning (e.g., Dessler et al., 1995; Dufour et al., 2006; Santee et al., 2008b) and for model evaluation (e.g., Andersson et al., 2016; Grooß et al., 2018). We utilize time series of Aura/MLS (Microwave Limb Sounder) and SCISAT/ACE-FTS (Atmospheric Chemistry Experiment – Fourier Transform Spectrometer) to compare the Arctic winter 2015/16 with other Arctic winters and to study the temporal evolution of relevant trace gases in the lowermost stratosphere (LMS) over the course of the winter. In the LMS region, vertical and horizontal resolutions of current satellite missions are limited, which makes

these measurements difficult to use for mesoscale case studies. Balloon and airborne in situ instruments provide precise and spatially highly resolved measurements at the location of the balloon or aircraft, which enables process studies (e.g., Lelieveld et al., 1999; von Hobe et al., 2013) and studies of chlorine partitioning at the flight altitude (e.g., Jurkat et al., 2017) to be performed. Limb remote-sensing measurements from balloon and airborne instruments provide trace gas profiles that have been used to study the diurnal cycle of trace gases (Wetzel et al., 2012), chlorine partitioning (von Clarmann et al., 1995; Wetzel et al., 2015), and process studies (e.g. von Hobe et al., 2013, and references therein). Most of these studies focus on altitudes of around 500 K potential temperature, where maximum chlorine activation is typically found. Observations of relevant trace gas species at high spatial resolution in the polar LMS region are sparse. The LMS region is influenced by dynamical effects, such as transport, mixing, wave propagation, and subsidence (e.g., Gettelman et al., 2011), and shows large variability, which requires spatially highly resolved measurements. We utilize such observations to understand the process of chlorine deactivation in this dynamically complex situation in the LMS, and to validate atmospheric chemistry–climate and transport models.

Spatially highly resolved measurements have been performed during the PGS (POLSTRACC: POLar STRATosphere in a Changing Climate/GW-LCYCLE II: Gravity Wave Life Cycle Experiment/GWEX: Gravity Wave EXperiment/SALSA: Seasonality of Air mass transport and origin in the Lowermost Stratosphere using the HALO Aircraft) campaign in the Arctic winter 2015/16. This particular winter was characterized by exceptionally cold stratospheric temperatures (Manney and Lawrence, 2016; Matthias et al., 2016), by the presence of polar stratospheric clouds (PSCs) down to altitudes lower than 15 km over a long period of time (Pitts et al., 2018; Voigt et al., 2018), and by strong denitrification (Khosrawi et al., 2017). These conditions allowed for extensive activation of chlorine. Due to the long time period of the campaign (from December 2015 to March 2016), it was possible to probe the upper troposphere and lower stratosphere (UTLS) at different times over the course of the Arctic winter. The long-distance flights (up to 8000 km) with the German HALO (High-Altitude Long-range) research aircraft enabled the GLORIA (Gimballed Limb Observer for Radiance Imaging of the Atmosphere) instrument to measure highly resolved two-dimensional trace gas distributions over large distances.

In this work, we use this unique data set to validate the processes for the chemical transport model CLaMS (Chemical Lagrangian Model of the Stratosphere) and the chemistry–climate model EMAC (ECHAM5/MESSy Atmospheric Chemistry) at the lower boundary of the polar vortex. Satellite measurements are utilized to give context to the Arctic winter 2015/16, and to investigate the temporal evolution of chlorine activation and deactivation in the LMS in comparison to CLaMS. Sensitivity simulations are performed to

estimate the influence of the availability of  $\text{O}_3$  and  $\text{NO}_y$  on chlorine deactivation into  $\text{HCl}$  or  $\text{ClONO}_2$ . CLaMS is also used to estimate chemical ozone loss in 2015/16, which has not been reported by other studies. Additionally, we investigate the deactivation of chlorine into  $\text{ClONO}_2$  in the measured air masses. For this purpose, CLaMS is used to estimate the fraction of measured  $\text{ClONO}_2$  arising from in situ deactivation in the LMS and the fraction that has been transported downwards over a timescale of several days.

## 2 Data sets and methods

### 2.1 PGS Campaign and GLORIA observations

The aircraft campaigns POLSTRACC, GW-LCYCLE II, GWEX, and SALSA were conducted together as the PGS campaign during the Arctic winter 2015/16 from bases in Oberpfaffenhofen, Germany, and Kiruna, Sweden. In total, 18 research flights from 17 December 2015 to 18 March 2016 were performed, covering regions between  $80^\circ\text{W}$  and  $30^\circ\text{E}$  longitude and  $25$  and  $87^\circ\text{N}$  latitude. Aboard the German research aircraft HALO, nine in situ and three remote-sensing instruments were deployed. The flight paths of flights with GLORIA measurements discussed in this paper are depicted in Fig. 1.

GLORIA is an airborne limb-imaging Fourier transform spectrometer (Friedl-Vallon et al., 2014) that is mounted below the aircraft and simultaneously records  $128 \times 48$  (vertical  $\times$  horizontal) interferograms per measurement in across-track limb-viewing geometry. These interferograms are radiometrically calibrated using in-flight measurements of two blackbodies. Subsequently the spectra are horizontally averaged within each measurement for noise reduction (Kleinert et al., 2014). From measurements in the high spectral resolution mode (also known as “chemistry mode”, with a spectral sampling of  $0.0625\text{ cm}^{-1}$ ), temperature and trace gases are retrieved with the software KOPRAFIT (Höpfner, 2000). This software uses derivatives of the radiance with respect to the retrieved atmospheric parameter provided by the line-by-line radiative transfer model KOPRA (Karlsruhe Optimized and Precise Radiative transfer Algorithm, Stiller, 2000) to iteratively solve the inverse problem of radiative transport applying the Gauss–Newton algorithm (Rodgers, 2000) with a regularization according to Tikhonov and Arsenin (1977) and Phillips (1962). The data set used in this work contains temperature,  $\text{O}_3$ ,  $\text{HNO}_3$ ,  $\text{ClONO}_2$ ,  $\text{H}_2\text{O}$ , and CFC-12. It is described, validated with in situ measurements, and compared to satellite observations by Johansson et al. (2018a). The retrieved temperatures have a total estimated error of 1 to 2 K. Trace gases of this data set have combined (systematic and random) errors of 10%–20%. Vertical resolutions of 400–1000 m are achieved. During parts of some of these PGS flights, the GLORIA measurement mode was changed to a reduced spectral and enhanced spatial resolution (also

known as “dynamics mode”; see Ungermann et al., 2015). These measurements are not discussed in this work and may appear as missing data.

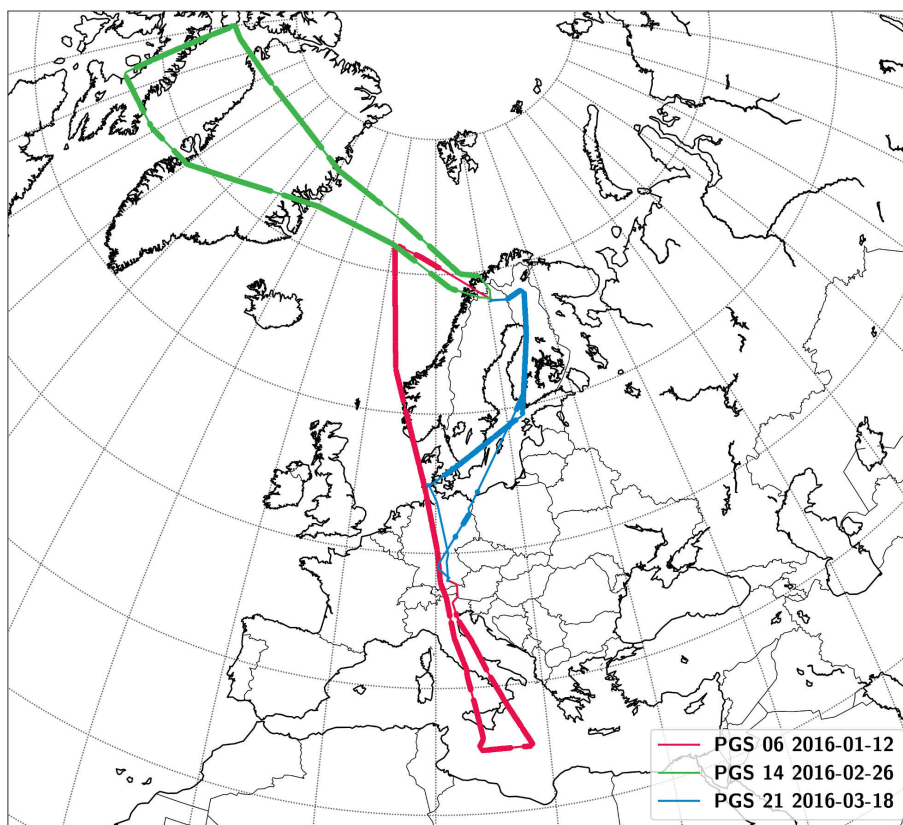
### 2.2 Satellite observations

#### 2.2.1 Aura/MLS

The Microwave Limb Sounder (MLS) instrument aboard the NASA Earth Observing System Aura satellite, which was launched in 2004, is a successor to the MLS instrument on the Upper Atmosphere Research Satellite (UARS). It measures thermal radiation in the microwave spectrum (0.1 to 2.5 mm wavelength) in five spectral bands with seven radiometers pointing in the orbital flight direction and vertically scanning the limb of the atmosphere (Waters et al., 2006). With the 705 km altitude near-polar sun-synchronous orbit of the Aura spacecraft, MLS data coverage extends from  $82^\circ\text{S}$  to  $82^\circ\text{N}$  during every orbit, with a vertical limb scan every 165 km along the orbit track. In this work we use the current MLS data version 4.2 of  $\text{O}_3$ ,  $\text{HNO}_3$ ,  $\text{HCl}$ ,  $\text{ClO}$ , and  $\text{CH}_3\text{Cl}$ . The quality and reliability of the v4 MLS data set are described by Livesey et al. (2018); detailed information on the quality of a previous version (v2.2) of MLS  $\text{O}_3$ ,  $\text{HCl}$ ,  $\text{HNO}_3$ ,  $\text{ClO}$ , and  $\text{CH}_3\text{Cl}$  measurements can be found in dedicated evaluation papers (Froidevaux et al., 2008b, a; Santee et al., 2007, 2008a, 2013). In the UTLS region, the vertical resolution and typical estimated error for version 4 trace gases are  $\approx 3\text{ km}$  and  $\approx 10\%$  for  $\text{O}_3$ ,  $\approx 4\text{ km}$  and  $\approx 30\%$  for  $\text{HNO}_3$ ,  $3\text{ km}$  and  $\approx 20\text{--}40\%$  for  $\text{HCl}$ ,  $3\text{--}4.5\text{ km}$  and  $\approx 5\text{--}20\%$  for  $\text{ClO}$ , and  $4\text{--}5\text{ km}$  and  $\approx 30\text{--}45\%$  for  $\text{CH}_3\text{Cl}$ . The lowest (i.e., highest pressure) recommended retrieval surface is 261 hPa for  $\text{O}_3$ , 215 hPa for  $\text{HNO}_3$ , and 147 hPa for  $\text{HCl}$ ,  $\text{ClO}$  and  $\text{CH}_3\text{Cl}$ .

#### 2.2.2 SCISAT/ACE-FTS

The Atmospheric Chemistry Experiment – Fourier Transform Spectrometer is an infrared limb solar occultation instrument and the main payload of the Canadian SCISAT-1 satellite. The spacecraft was launched in 2003 into a  $74^\circ$  inclination circular orbit at 650 km altitude. In this study, we use  $\text{ClONO}_2$  from the ACE-FTS versions 3.5 and 3.6 data (Bernath, 2017). The  $\text{ClONO}_2$  data product has been validated (Sheese et al., 2016) and it has a vertical resolution of 3–4 km and up to 20% estimated error in the UTLS. Due to the solar occultation measurement geometry, no measurements are possible during polar night, and if measurements are possible, the number of measured profiles is significantly lower (up to 30 per day in two latitude “bands”) compared to the MLS. This limited sampling makes the usage of ACE-FTS daily vortex-averaged data difficult, but, as shown in various studies, the vortex average data quality is good for scientific use (e.g., Dufour et al., 2006; Santee et al., 2008b).



**Figure 1.** Flight paths of flights PGS06 (12 January 2016), PGS14 (26 February 2016), and PGS21 (18 March 2016) on which GLORIA measurements were performed and discussed in this paper. Aircraft positions with measurements in GLORIA high spectral resolution mode are marked as bold lines. The underlain map (bold black lines show coastal lines, regular black lines country borders, and dotted lines indicate a latitude by longitude grid) shows the European continent and is centered at 60° N latitude and 10° E longitude.

### 2.2.3 CALIPSO/CALIOP

The Cloud-Aerosol Lidar with Orthogonal Polarization (CALIOP) instrument on the CALIPSO (Cloud-Aerosol Lidar and Infrared Pathfinder Satellite Observations) satellite provides measurements of high-altitude clouds (PSCs and cirrus) using backscatter coefficients at 532 and 1064 nm of the dual wavelength polarization-sensitive lidar (Winker et al., 2009). The CALIPSO satellite was launched in 2006 and flies in a 98° inclination orbit at 705 km altitude, together with the Aura satellite (among others) in the NASA “A-train” constellation. This allows for nearly coincident measurements of PSCs with Aura/MLS trace gases. A detailed discussion of the CALIOP PSC climatology is given by Pitts et al. (2018).

## 2.3 Model simulations

### 2.3.1 CLaMS

The Chemical Lagrangian Model of the Stratosphere (CLaMS, McKenna et al., 2002a, b; Groöß et al., 2014) is a chemistry transport model (CTM) that has been utilized

for a simulation of the chemical composition of the Arctic winter 2015/16 (Groöß et al., 2018). The version “PL8” model run was initialized on 1 November 2015, with data from MLS observations of O<sub>3</sub>, N<sub>2</sub>O, H<sub>2</sub>O, and HCl, and over the course of the winter, the dynamics have been specified by wind and temperature fields from the ERA-Interim analysis provided by the ECMWF (European Centre for Medium-Range Weather Forecasts). CH<sub>3</sub>Cl has been initialized using a correlation between a 15 d average of CFC-11 simulated by CLaMS and CH<sub>3</sub>Cl measured by MLS. This correlation was used instead of CFC-11/CH<sub>3</sub>Cl correlations available from ACE-FTS (Brown et al., 2013) because MLS and ACE-FTS show differences in the LMS (Santee et al., 2013), where this study is focused. The model run employs 32 vertical entropy-preserving layers (Konopka et al., 2007) with an altitude-dependent vertical resolution of 400 m at 10 km up to about 800 m between 12 and 24 km altitude and a horizontal resolution of 100 km. The troposphere below 9 km only has a vertical resolution of about 2 km. Recent improvements to the model, such as the influence of galactic cosmic rays (Groöß et al., 2018), are considered in this model run.

For the comparison of CLaMS results with GLORIA and MLS measurements, backward trajectories are calculated from the geolocations of the measurements. At 12:00 UTC, the CLaMS output is spatially interpolated linearly onto these trajectory positions. Chemistry relevant for diurnal variations in target trace gases has been calculated along these trajectories.

The CLaMS sedimentation module offers the possibility of simulating nitric acid trihydrate (NAT; Groöß et al., 2014) and ice (Tritscher et al., 2019) PSC cloud formation and the corresponding denitrification and nitrification, as well as dehydration and hydration. Information about the surface area density of ice, NAT, and supercooled ternary solution (STS) particles per volume of air is available for every CLaMS air parcel. For comparison with the CALIOP PSC areal coverage, lower boundaries for the different surface area densities were defined to discriminate PSCs from background aerosols. In accordance with the CALIOP detection thresholds, PSC thresholds for CLaMS simulations are as follows:  $3.3 \mu\text{m}^2 \text{cm}^{-3}$  for STS droplets (Carslaw et al., 1994, 1995a, b),  $0.25 \mu\text{m}^2 \text{cm}^{-3}$  for NAT, and  $0.5 \mu\text{m}^2 \text{cm}^{-3}$  for ice particles. Values exceeding those thresholds are counted as PSCs in those specific composition classes, respectively.

### 2.3.2 EMAC

The ECHAM5/MESSy Atmospheric Chemistry (EMAC, Jöckel et al., 2010) model is an Eulerian chemistry–climate model (CCM) that uses the fifth-generation European Centre Hamburg general circulation model (ECHAM5 version 5.3.02, Roeckner et al., 2006) and the second version of the Modular Earth Submodel System (MESSy version 2.52). For the Arctic winter 2015/16 a simulation nudged to the dynamics of the ECMWF operational analyses was initialized on 1 July 2015. This model run was performed with a T106L90MA resolution, with a spherical truncation of T106 (which corresponds to a horizontal resolution of approximately  $1.125^\circ$  latitude by  $1.125^\circ$  longitude) and 90 vertical hybrid pressure levels from the surface up to 0.01 hPa (approx. 80 km). The vertical resolution in the UTLS is about 0.5 km. The EMAC submodel Multiphase Stratospheric Box Model (MSBM) simulates the number densities, mean radii, and surface areas of sulfuric acid aerosols and liquid and solid PSC particles. The formation of STS particles is calculated according to Carslaw et al. (1995b). Ice particles are assumed to form homogeneously at temperatures below  $T_{\text{ice}}$  and the sedimentation of these particles is calculated according to Waibel et al. (1999). NAT formation is calculated using the “kinetic NAT parameterization”, which is based on the growth and sedimentation algorithm given by Carslaw (2002) and van den Broek et al. (2004). A more detailed description of the PSC submodel is given in Kirner et al. (2011). A comprehensive chemistry setup with gas-phase and heterogeneous reactions on PSCs was included using rate constants mainly from the Jet Propulsion Laboratory (JPL,

Sander et al., 2011). A detailed description of this model simulation is given by Khosrawi et al. (2017).

## 2.4 Meteorological analyses and vortex boundary estimation

### 2.4.1 MERRA-2 meteorological reanalysis

The Modern-Era Retrospective analysis for Research and Applications, Version 2 (MERRA-2) is the standard meteorological reanalysis data set of the NASA Global Modeling and Assimilation Office (Gelaro et al., 2017). Global fields of temperature, pressure, potential temperature, and potential vorticity at  $0.625^\circ \times 0.5^\circ$  (longitude  $\times$  latitude) horizontal resolution and 83 vertical levels are used in this study. Note that both atmospheric models used in this study, CLaMS and EMAC, apply meteorological data from ECMWF rather than MERRA-2.

### 2.4.2 Vortex boundary estimation

The definition of the edge of the polar vortex in the UTLS region is challenging, especially at lower altitudes (Gettelman et al., 2011; Lawrence and Manney, 2018). In this study, it was decided to use two vortex filters: the first filter calculates the potential vorticity (PV) determining the edge of the polar vortex according to Nash et al. (1996). The polar vortex at 370 K potential temperature ( $\theta$ ) is shown on maps in order to illustrate its position. The second filter uses scaled potential vorticity (sPV), which is the PV divided by the factor  $\partial\theta/\partial p$  (where  $p$  denotes the pressure), to exclude the altitude dependency from the PV (Dunkerton and Delisi, 1986; Manney et al., 1994). The MERRA-2 sPV is linearly interpolated onto the measurement geolocations, and measurements with a corresponding sPV  $< 1.2 \times 10^{-4} \text{ s}^{-1}$  are filtered out.

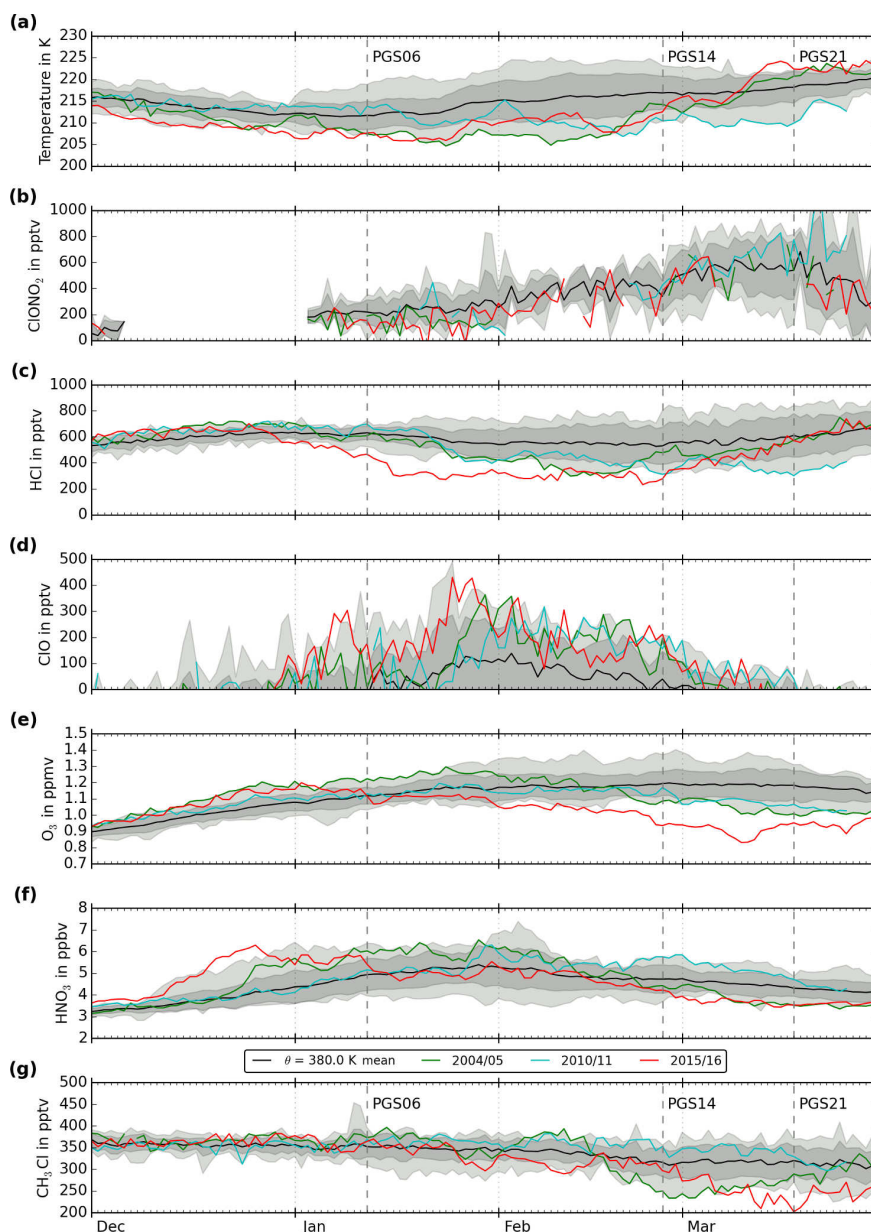
## 3 Measurements and model evaluation

In this section, the Arctic winter of 2015/16 is put into climatological context by comparing time series of satellite measurements of the LMS in that year with those from other Arctic winters. A more detailed view of the 2015/16 satellite time series is then compared to CLaMS simulation results. After that, three exemplary flights from the PGS campaign are discussed in detail regarding GLORIA  $\text{O}_3$  and ClONO<sub>2</sub> VMR (volume mixing ratio) cross sections. These aircraft measurements are then used to validate EMAC and CLaMS simulations.

### 3.1 Time series

Time series of MERRA-2 temperature and MLS and ACE-FTS trace gas data are used to provide context for the aircraft-based measurements. These time series are created by averaging all reanalysis temperatures and all measured trace gas





**Figure 2.** Vortex average time series of (a) temperature (MERRA-2) and volume mixing ratios of (b)  $\text{ClONO}_2$  (ACE-FTS), (c)  $\text{HCl}$ , (d) day-time  $\text{ClO}$ , (e)  $\text{O}_3$ , (f)  $\text{HNO}_3$ , and (g)  $\text{CH}_3\text{Cl}$  (Aura/MLS) for the period 2004–2018 over the Arctic at  $\theta = 380\text{ K}$  ( $\approx 15\text{ km}$  in January). The black line marks the average value for each day, the dark shaded area marks the standard deviation of each day between different years, and the light shaded area marks minimum and maximum values within the time period. The Arctic winter 2015/16 has been excluded from all of these measures. Mean values for the Arctic winters 2004/05 (green), 2010/11 (cyan), and 2015/16 (red) are marked separately. Days with aircraft measurements discussed in this paper are marked with dashed lines.

profiles (data are vortex-filtered according to the sPV criterion defined in Sect. 2.4.2), linearly interpolated to levels of potential temperature for each day within the polar cap (latitudes  $> 55^\circ\text{ N}$ ). Because of the pronounced diurnal cycle of  $\text{ClO}$ , all  $\text{ClO}$  nighttime measurements have been filtered out using the solar zenith angle (threshold of  $90^\circ$ ) associated with the measurement. In order to compare the time series of the Arctic winter 2015/16 with other winters, these time

series are created for all Arctic winters of the Aura/MLS and ACE-FTS epoch from 2004/05 to 2017/18.

The time series at  $\theta = 380\text{ K}$  for temperature,  $\text{ClONO}_2$ ,  $\text{HCl}$ ,  $\text{ClO}$ ,  $\text{O}_3$ ,  $\text{HNO}_3$ , and  $\text{CH}_3\text{Cl}$  are shown in Fig. 2. For each species, the black line marks the mean for each day for all years from 2004 to 2018 (excluding 2015/16), dark grey shading depicts the standard deviation around this mean value and light grey shading marks minimum and maximum

values of all time series (excluding 2015/16). The time series for the Arctic winter 2015/16, which is the focus of this study, is presented in red. The Arctic winters 2004/05 (green) and 2010/11 (cyan) are also highlighted. These winters are known for extremely low stratospheric temperatures and have been discussed in detail previously (e.g., Santee et al., 2008b; Manney et al., 2011).

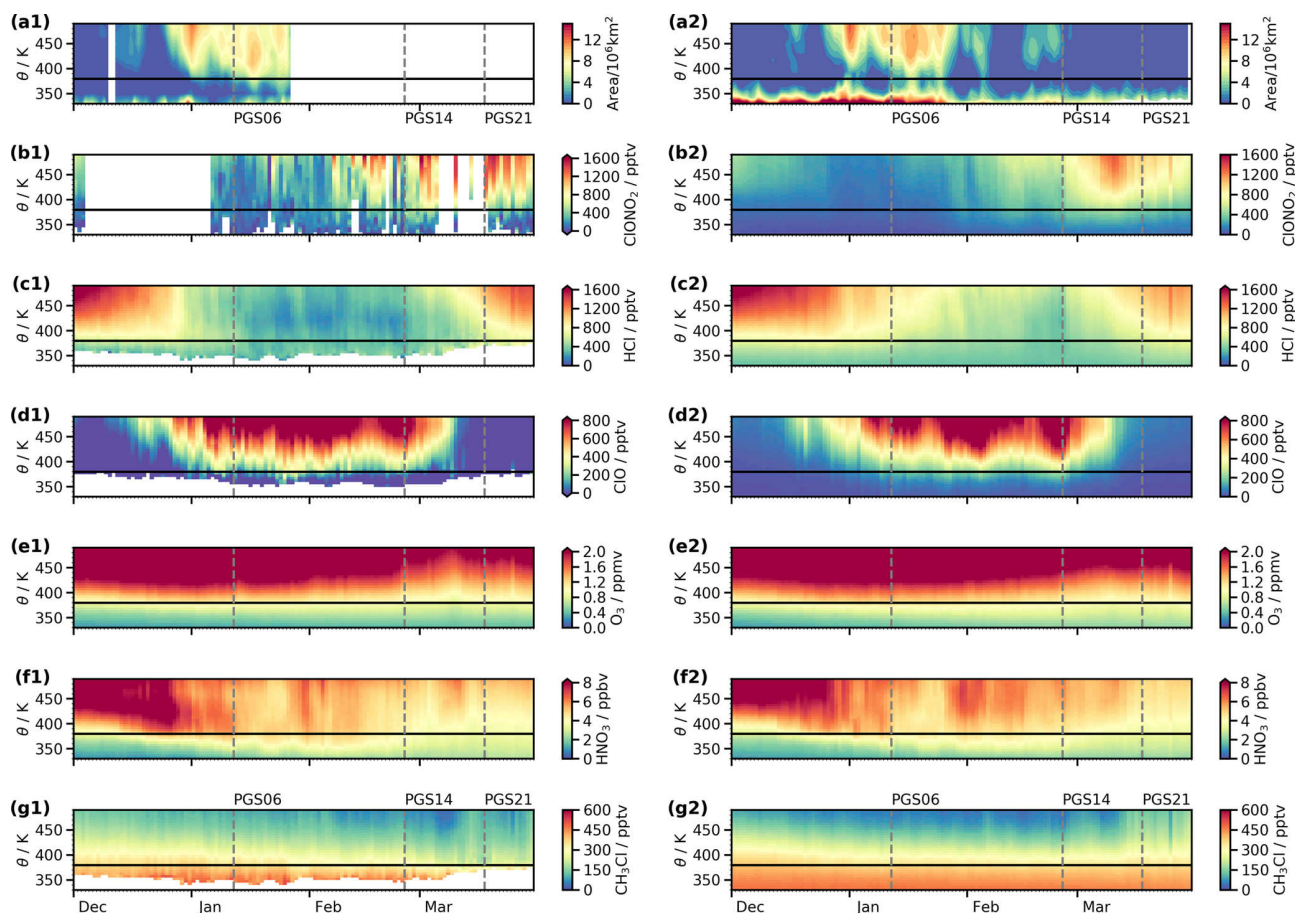
In 2015/16, MERRA-2 temperatures at 380 K were near or below the climatological minima through mid-January (Fig. 2a). Then two minor warmings (end of January and mid-February) and the final warming (early March) are visible in the 2015/16 temperature curve. ClONO<sub>2</sub> from ACE-FTS measurements (Fig. 2b) exhibits lower abundances in January 2016 compared to the other winters in the ACE-FTS record. Measurements available for February and March show that ClONO<sub>2</sub> followed a course in 2016 comparable to or below the multi-year average. The other chlorine reservoir HCl (Fig. 2c) sets a new minimum of all Aura/MLS time series in January and February for the year 2016. Consistent with the picture from HCl, the MLS ClO (Fig. 2d) is above the average for the whole winter and also establishes new maximum values on many days. O<sub>3</sub> in the LMS is slightly above the MLS average (Fig. 2e) in the beginning of the Arctic winter 2015/16, while minimum O<sub>3</sub> values are observed from mid-February 2016 onward at 380 K. As discussed by Manney and Lawrence (2016), such extremely low O<sub>3</sub> has not been observed at higher altitudes (490 K), where the ozone loss was at its maximum in 2011. HNO<sub>3</sub> (Fig. 2f) shows extreme behavior in 2015/16 at  $\theta = 380$  K: in December 2015, HNO<sub>3</sub> also exhibits a strong increase, reaching maximum values > 6 ppbv, whereas in March values consistently below 3 ppbv are measured. Methyl chloride (CH<sub>3</sub>Cl), a largely biogenic trace gas that is well mixed in the troposphere and photolyzed in the stratosphere, is a useful tracer of diabatic descent within the polar vortex. The time series of CH<sub>3</sub>Cl is illustrated in Fig. 2g: the typically slow decrease in CH<sub>3</sub>Cl due to diabatic descent is visible in the average VMR, which slowly decreases. During 2015/16, CH<sub>3</sub>Cl followed a more or less climatological evolution until the beginning of March, when VMRs dropped rapidly and became highly variable with the onset of the major final warming.

Manney and Lawrence (2016) showed the extraordinary nature of the 2015/16 Arctic winter from higher in the stratosphere (at 490 K). The contextual information from satellite observations in Fig. 2 illustrates how exceptional this winter also was in the LMS, where the PGS measurements were performed. At 380 K, the decrease in HCl and increase in ClO, indicative of substantial chlorine activation in the LMS, started earlier and reached more extreme levels in 2015/16 compared to any other year in the Aura/MLS record. The unusually strong chlorine activation at this level is also evident in the ClONO<sub>2</sub> abundances measured by ACE-FTS, which lie below the climatological mean in January 2016. Substantial chlorine activation in the Arctic LMS has rarely been reported previously (e.g., Santee et al., 2011). The di-

abatic descent at 380 K in 2015/16 essentially followed the climatological mean until the final warming in March, as seen in CH<sub>3</sub>Cl. Thus, the degree of replenishment of O<sub>3</sub> at 380 K by diabatic descent was not unusual throughout most of the ozone destruction period in 2015/16. For that reason, the unusually low O<sub>3</sub> abundances at 380 K indicate chemical ozone loss.

### 3.2 Comparison of satellite measurements to model simulations

For a comparison with the measured Arctic winter 2015/16 time series, the CLaMS simulations have been linearly interpolated to Aura/MLS geolocations (see Sect. 2.3.1), which have been used to calculate vortex-averaged profiles in the same manner as described in Sect. 3.1. An exemplary comparison of CLaMS HNO<sub>3</sub> daily vortex average profiles with and without the application of typical MLS averaging kernels showed smaller differences than the differences between the measurements and the models that are discussed in this work. Due to this minor impact, CLaMS data are shown without the application of MLS averaging kernels. In order to get a more complete picture of the CLaMS simulation, modeled ClONO<sub>2</sub> (which is measured by ACE-FTS) is also interpolated to these MLS geolocations. The comparison of the time series in the altitude range  $\theta = 330$ –490 K is illustrated in Fig. 3. Figure 3a presents daily PSC area time series until the end of January 2016, when instrumental problems forced CALIOP to suspend measurements. The data product shown does not discriminate between cirrus clouds and PSCs in the UTLS region. Chlorine activation is also possible on cirrus clouds (e.g., Borrmann et al., 1996), and thus this panel indicates the area of potential heterogeneous chlorine activation. These areas increase considerably at 490 K at the end of December 2015 and were also observed at potential temperatures as low as 380 K in the beginning of January 2016. The CLaMS simulation reveals the same temporal and spatial distribution of PSCs as measured by CALIOP but with slightly larger maximum PSC areas simulated than measured. For the rest of the winter (after CALIOP stopped measurements), CLaMS shows a rapid decrease of PSC area until the beginning of February and a short period with a small area of PSC occurrences at the end of February. ClONO<sub>2</sub> (Fig. 3b) displays enhancements of > 1000 pptv at altitudes  $\theta > 380$  K in March in the simulation and measurements. In the ACE-FTS measurements, these enhancements are also visible starting from the middle of February, whereas the CLaMS simulation indicates weaker maxima of 500 pptv at that time. A direct comparison of these plots is difficult due to the sparse sampling of the ACE-FTS measurements. HCl (Fig. 3c) decreases from 1600 pptv starting in December in MLS observations and in simulated data. This decrease advances faster to lower minimum values of 200 pptv in the measurements compared to the simulation, which shows a slower decrease to minimum values of 400 pptv. The increase



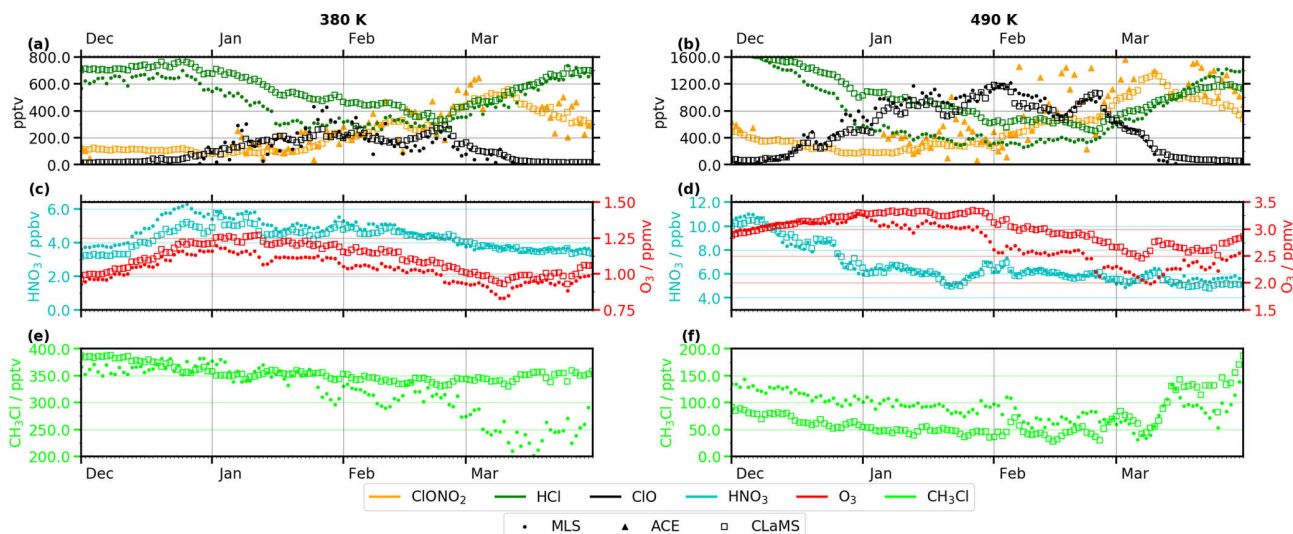
**Figure 3.** Comparison of MLS, ACE-FTS, and CALIOP time series (left) with CLaMS simulation results (right) for (a) PSC areas, (b) CIONO<sub>2</sub>, (c) HCl, (d) daytime ClO, (e) O<sub>3</sub>, (f) HNO<sub>3</sub>, and (g) CH<sub>3</sub>Cl. The  $\theta = 380$  K altitude is marked with a black line, and days with aircraft measurements discussed in this paper are marked with dashed lines. Color bars with top and/or bottom arrowheads indicate data greater and/or smaller than the color bar range.

in HCl, starting in the beginning of March, exhibits the same temporal evolution, while maximum values of 1400 pptv are observed and 1200 pptv are simulated. Measured and modeled ClO (Fig. 3d) are enhanced in the same time periods and altitude levels, although in the CLaMS data the enhancement towards the end of December shows lower absolute values (400 pptv at 490 K) compared to the MLS (800 pptv at 490 K). O<sub>3</sub> (Fig. 3e) displays very similar curtains over the course of the winter, although towards the end of the winter lower O<sub>3</sub> values are observed than simulated at altitudes of  $\theta \approx 450$  K. HNO<sub>3</sub> (Fig. 3f) simulated by CLaMS compares well with the corresponding MLS measurement. The major difference is observed at the end of December, when HNO<sub>3</sub> values  $> 8$  ppbv are measured at altitudes of  $\theta \approx 400$  K, but only 6 ppbv are simulated at this time and altitude. Figure 3g presents measured and modeled CH<sub>3</sub>Cl with VMRs up to 500 pptv in the troposphere and VMRs measured as low as 50 pptv and simulated as low as 25 pptv in the stratosphere.

For a more quantitative comparison, cuts along  $\theta = 380$  K and  $\theta = 490$  K are presented in Fig. 4. The lower altitude

curves are provided as an extension of Fig. 2 to give context to the aircraft measurements in the following sections. The slice at  $\theta = 490$  K is meant as a connection to previous discussions of this winter (Manney and Lawrence, 2016) and to compare to other extreme winters discussed at this altitude level (Santee et al., 2008b; Manney et al., 2011). In addition, showing both levels illuminates the differences between the LMS and the bulk of the stratosphere above. The chlorine species (Fig. 4a–b), HNO<sub>3</sub> (4c–d, left axis), and O<sub>3</sub> (4c–d, right axis) show in detail the overall agreement and specific differences between measurement and simulation, which have already been described for Fig. 3. At  $\theta = 380$  K, large discrepancies between model and observation are noted for HCl ( $\Delta\text{vmr}_{\text{max}} = 200$  pptv) and HNO<sub>3</sub> ( $\Delta\text{vmr}_{\text{max}} = 1$  ppbv) until the middle of February, while at  $\theta = 490$  K, discrepancies are visible for HCl ( $\Delta\text{vmr}_{\text{max}} = 400$  pptv) starting from the beginning of the winter and for O<sub>3</sub> ( $\Delta\text{vmr}_{\text{max}} = 750$  ppbv) starting from January. CH<sub>3</sub>Cl (Fig. 4e, f) shows agreement at 380 K until the end of January 2016, with slowly decreasing VMRs between





**Figure 4.** Time series of vortex-averaged trace gases from satellite measurements and CLaMS simulation at 380 K (a, c, e) and 490 K (b, d, f). CLaMS data are shown as open squares, MLS as filled points, and ACE-FTS as triangles. The evolution of chlorine species (CIONO<sub>2</sub>: orange; HCl: green; ClO: black) is illustrated in the first row (a, b), HNO<sub>3</sub> (cyan) and O<sub>3</sub> (red) in the second row (c, d), and CH<sub>3</sub>Cl (light green) in the third row (e, f).

380 and 340 pptv. Starting at the end of January, the measured CH<sub>3</sub>Cl VMR decreases to values as low as 200 pptv in March, while the simulated VMR remains at about 340 pptv. At 490 K, a difference of 50 pptv between simulated and measured CH<sub>3</sub>Cl is visible, with simulated VMRs lower than those measured until February, when the measured CH<sub>3</sub>Cl VMRs approach the simulated values. Modeled and measured CH<sub>3</sub>Cl then agree until the middle of March, after which the observed variations are not fully captured by the simulation.

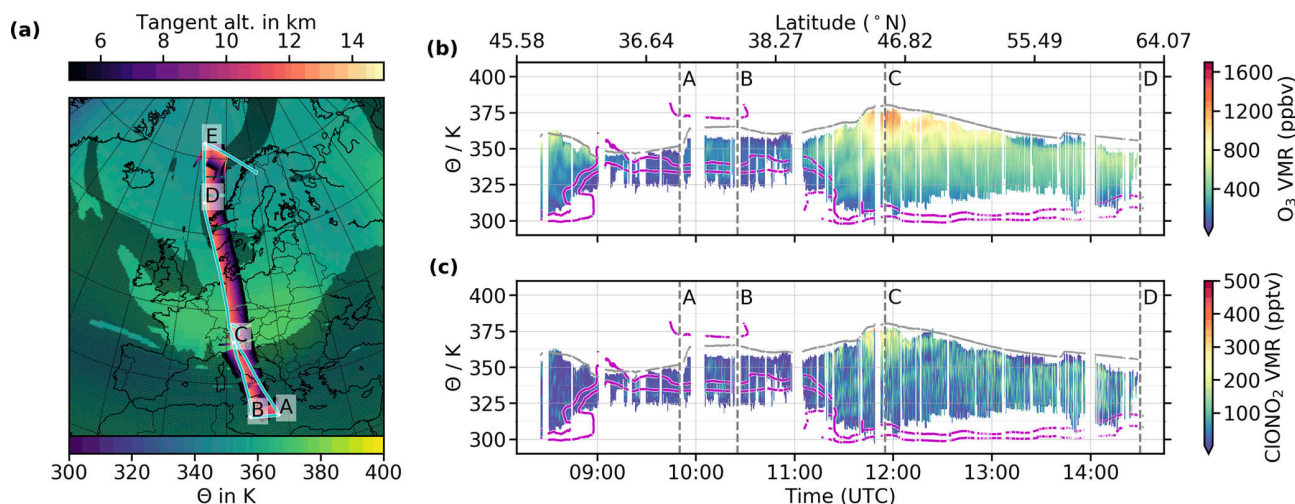
In general, CLaMS succeeds in reproducing chlorine deactivation of the Arctic winter 2015/16, which has been identified to be unusual by the comparison to time series of other years in the MLS record: the deactivation of chlorine in the Arctic LMS typically starts with a decrease of ClO and an increase in CIONO<sub>2</sub>, followed by a slow increase in HCl until the equilibrium between the reservoirs is reestablished (Solomon, 1999). The 2015/16 time series of CIONO<sub>2</sub> is mostly at or below the 2004–2018 average in February and March, and an increase in HCl from exceptionally low values of 200 pptv at the end of February 2016 to the 2004–2018 average values of 600 pptv at 380 K is observed in the middle of March 2016 (Figs. 2 and 4).

CALIOP PSC area measurements agree with PSC areas simulated by CLaMS for the time CALIOP was able to collect measurements. ACE-FTS measurements and CLaMS simulation of CIONO<sub>2</sub> show agreement within the limited ACE-FTS sampling, which influences the daily mean profiles. The HCl time series exhibit differences similar to those discussed in detail by Grooß et al. (2018): in the beginning of the winter, activation of HCl is not simulated to the ex-

tent it is observed by the satellite instrument. This lack of chlorine activation is also visible in ClO, which indicates lower VMRs in the model in the beginning of the winter. Another result of the reduced chlorine activation of CLaMS is the overestimation of simulated O<sub>3</sub> compared to MLS observations, which is particularly visible at 490 K towards the end of the winter. HNO<sub>3</sub> shows agreement between MLS and CLaMS, but in the beginning of the winter lower VMRs are simulated than observed at 380 K. This disagreement is considered to result from an underestimation by CLaMS of re-nitrification at this level from the sedimentation of HNO<sub>3</sub>-containing PSC particles from above. It is known that denitrification and re-nitrification are difficult to simulate in the LMS (Braun et al., 2019). Comparisons of CH<sub>3</sub>Cl show agreement between measurement and simulation for the beginning of the winter at 380 K, but starting in January measured CH<sub>3</sub>Cl decreases notably, while the simulated CH<sub>3</sub>Cl remains almost constant. These differences indicate that diabatic descent is too weak in the model at 380 K. At 490 K, the persistent 50 pptv model–measurement discrepancy suggests that the CH<sub>3</sub>Cl VMRs used to initialize the simulation (see Sect. 2.3.1) were too low, which does not allow for further conclusions at this altitude level.

### 3.3 Aircraft measurements

In addition to the overview of the Arctic winter 2015/16 chemical composition of the LMS using satellite observations, the airborne GLORIA measurements of O<sub>3</sub> and CIONO<sub>2</sub> aim to give detailed insights of the lowermost part of the polar vortex. Out of 14 scientific flights, 3 flights with particularly interesting trace gas distributions at differ-



**Figure 5.** Flight PGS06 (12 January 2016): (a) flight path (cyan) on a map with MERRA-2 potential temperatures (lower color bar) at a typical HALO cruise altitude of 13 km. Regions outside the polar vortex (at  $\theta = 370$  K, according to Nash et al. (1996)) are marked with a grey shadow. Waypoints are marked with capital letters. The tangent altitudes of GLORIA measurements are shown in the upper color bar. Right panels: GLORIA cross section of (b) O<sub>3</sub> and (c) ClONO<sub>2</sub> (using GLORIA potential temperature). The flight level (approximated using MERRA-2 potential temperature) is marked with a grey line and white spaces mark regions without data. The MERRA-2 potential vorticities of 2 and 4 PVU are marked with magenta lines, and waypoints are marked with vertical dashed grey lines. Color bars with top and/or bottom arrowheads indicate data greater or smaller than the color bar range. The underlain map (bold black lines show coastal lines, regular black lines country borders, and dotted lines indicate a latitude by longitude grid) shows the European continent and is centered at 50° N latitude and 10° E longitude.

ent stages of the winter are discussed in this section. Measurements from other flights are provided in the supplement of Johansson et al. (2018a).

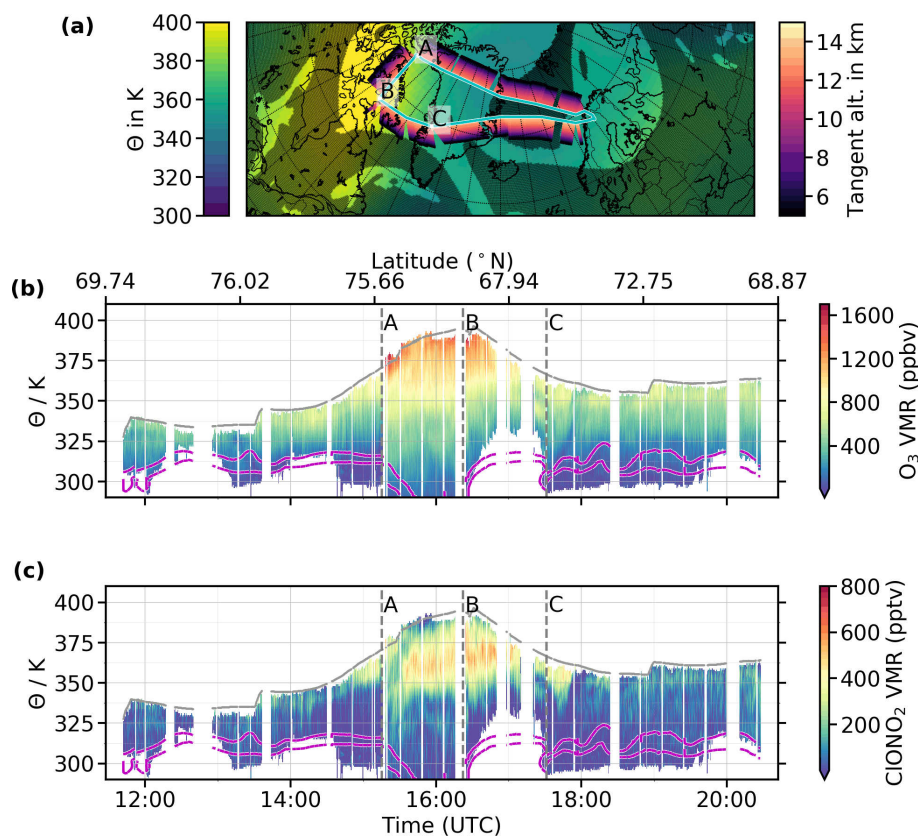
### 3.3.1 Flight on 12 January 2016 (PGS06)

The flight on 12 January 2016 (PGS06, Fig. 5) during mid-winter was the transfer flight from the campaign base Oberpfaffenhofen (Germany) to Kiruna (Sweden) via southern Italy (waypoints “A” and “B”, marked in Fig. 5). As shown in Fig. 5a, the polar vortex (estimated by regions that are not marked with a shadow) extended over Central Europe to the Arctic and Siberia. It can be seen from the higher MERRA-2 potential temperature that air masses at the typical flight altitude of 13 km had subsided over southern France and northern Italy (close to waypoint “C”), where a tropopause fold was present along the polar front jet stream on the day of the flight (Woiwode et al., 2018). Towards the end of the flight (after waypoint “D”), high-altitude clouds were observed along the GLORIA line of sight, and no retrievals were possible.

Two-dimensional trace gas distributions of O<sub>3</sub> (Fig. 5b) and ClONO<sub>2</sub> (Fig. 5c) along the flight path are shown as a function of time and  $\theta$  for PGS06 and, in the following sections, for PGS14 and PGS21. In order to compensate for dynamical features in the atmosphere, the trace gas cross sections are linearly interpolated on potential temperature levels. Additionally, the MERRA-2 potential vorticity (2 and

4 PVU, potential vorticity units) along the measurement geolocations is plotted as magenta lines to identify the dynamical tropopause. Waypoints, marked by capital letters and dashed lines, help to arrange these curtain plots on the map. Trace gas retrievals are possible between cloud top and flight altitude, and regions outside this range are not shown. In addition, for time periods used for calibration measurements, refuel stops (only on flight PGS21), and different measurement modes (only on flight PGS21) no retrieval results are available.

The measured O<sub>3</sub> concentrations reveal enhanced values up to 1200 ppbv at waypoint “C” at potential temperatures of 370 K. Below this maximum, small-scale structures of  $\sim 800$  ppbv are visible. Ozone values are low in tropospheric air masses over Italy (near waypoints “A” and “B”), but during the rest of the flight, for the most part, VMRs of  $\approx 500$  ppbv are observed at potential temperatures between 310 and 350 K. ClONO<sub>2</sub> shows maximum values up to 250 pptv close to the maximum O<sub>3</sub> VMR at waypoint “C”, where the highest potential temperature levels were reached. In the second part of this flight (after 11:30 UTC), small ClONO<sub>2</sub> enhancements ( $< 200$  pptv) are visible in small-scale horizontal structures at 310–350 K potential temperature. Overall, the GLORIA observations show a long north–south transect through the Arctic LMS in mid-January 2016, with subsided ozone-rich air masses and the first indications of chlorine deactivation into ClONO<sub>2</sub>.



**Figure 6.** As in Fig. 5 but for flight PGS14 (26 February 2016). The underlain map (bold black lines show coastal lines, regular black lines country borders, and dotted lines indicate a latitude by longitude grid) shows northern Canada, Greenland and northern Europe and is centered at  $70^{\circ}$  N latitude and  $20^{\circ}$  W longitude.

### 3.3.2 Flight on 26 February 2016 (PGS14)

In the middle of the Arctic winter on 26 February 2016, flight PGS14 was realized as shown in Fig. 6a. From the campaign base in Kiruna, the flight headed towards the northern part of Greenland (waypoint “A”), continued until Baffin Bay (waypoint “B”), and turned at waypoint “C” to change direction towards Kiruna. At a typical flight altitude of 13 km, the substantially subsided air masses are evident in the higher potential temperatures characterizing the portion of the flight track near waypoint “B”. The vortex criterion of Nash et al. (1996) at  $\theta = 370$  K also shows that most of the flight path was within the polar vortex.

The cross sections of  $O_3$  (Fig. 6b) and  $ClONO_2$  (Fig. 6c) are presented in the same manner as for flight PGS06. Between waypoints “A” and “B”, maximum  $O_3$  values of 1600 ppbv are measured at  $\theta = 390$  K, and below this small-scale structures are visible at  $\theta = 340$  K (in the vicinity of waypoint “C”).  $ClONO_2$  developed a local maximum of 600 pptv below the flight altitude at  $\theta = 360$  K around waypoints “A” and “B”. The maximum that becomes visible just before waypoint “A” is discontinuous, reforming at slightly

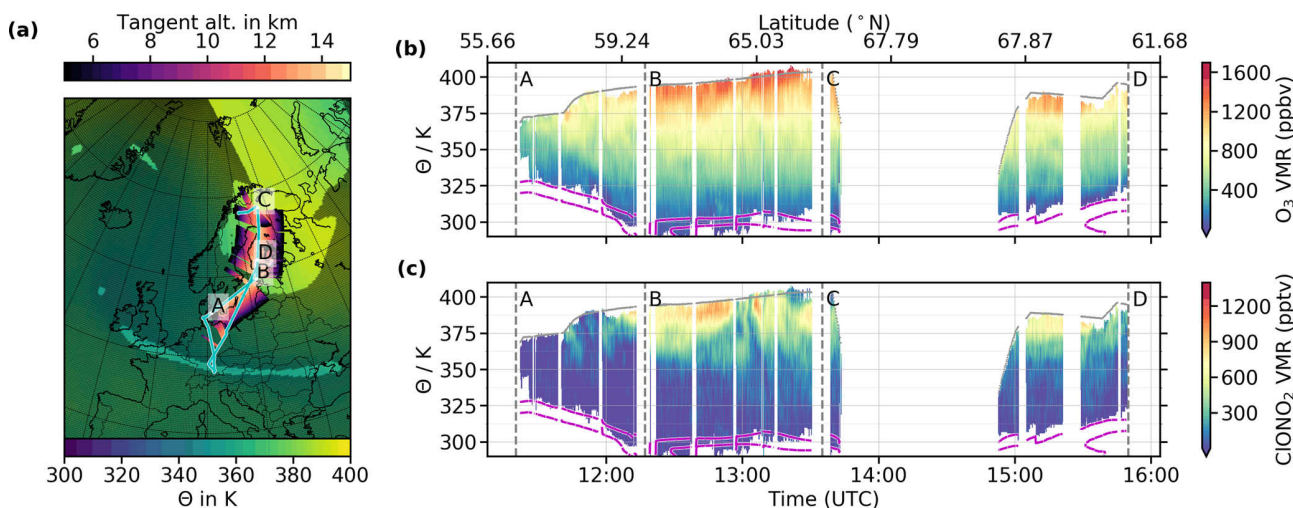
lower altitudes along the flight path (diagonal local minimum feature in Fig. 6c).

### 3.3.3 Flight on 18 March 2016 (PGS21)

The flight path of the late winter flight on 18 March 2016 (PGS21) is shown in Fig. 7a on a map, with MERRA-2 potential temperature at the typical flight altitude of 13 km. This flight started at the campaign base in Oberpfaffenhofen and headed towards Denmark (waypoint “A”), where the GLORIA measurement mode was changed to the “chemistry mode”. Then the flight course followed the Baltic sea north-eastwards until it reached the remains of the late winter polar vortex at waypoint “B”. Inside this region of high potential temperatures, the HALO aircraft continued northward until a refueling stop in Kiruna (shortly after waypoint “C”). On its way back to Oberpfaffenhofen, HALO took a similar flight path over the Baltic sea until the measurement mode of GLORIA was changed (waypoint “D”).

Two-dimensional cross sections of  $O_3$  and  $ClONO_2$  are shown in Fig. 7b, c. Between waypoints “B” and “C”, maximum  $O_3$  values of 1600 ppbv were observed and filamentary structures are visible down to altitudes of  $\theta = 340$  K. Between waypoints “A” and “B”, these filaments are visi-





**Figure 7.** As in Fig. 5 but for flight PGS21 (18 March 2016). The underlain map (bold black lines show coastal lines, regular black lines country borders, and dotted lines indicate a latitude by longitude grid) shows the European continent and is centered at 60° N latitude and 10° E longitude.

ble close to the flight altitude at  $\theta = 360$  K. For  $\text{ClONO}_2$ , enhanced values up to 1100 pptv are measured at  $\theta = 380$  K altitude.  $\text{ClONO}_2$  as high as 500 pptv is measured at altitudes as low as  $\theta = 350$  K. Between waypoints “B” and “C”, where consistently high  $\text{O}_3$  VMR is observed at  $\theta = 370$  K, strong horizontal fluctuations in  $\text{ClONO}_2$  are visible. These filaments in  $\text{ClONO}_2$  are likely to be connected to the availability of  $\text{NO}_2$ . Structures of  $\text{HNO}_3$  (which is photolyzed to  $\text{NO}_2$ ) and  $\text{ClONO}_2$  in the colocated GLORIA measurements reveal similar shapes (see Johansson et al., 2018a, Supplement).

### 3.4 Comparison of aircraft measurements to model simulations

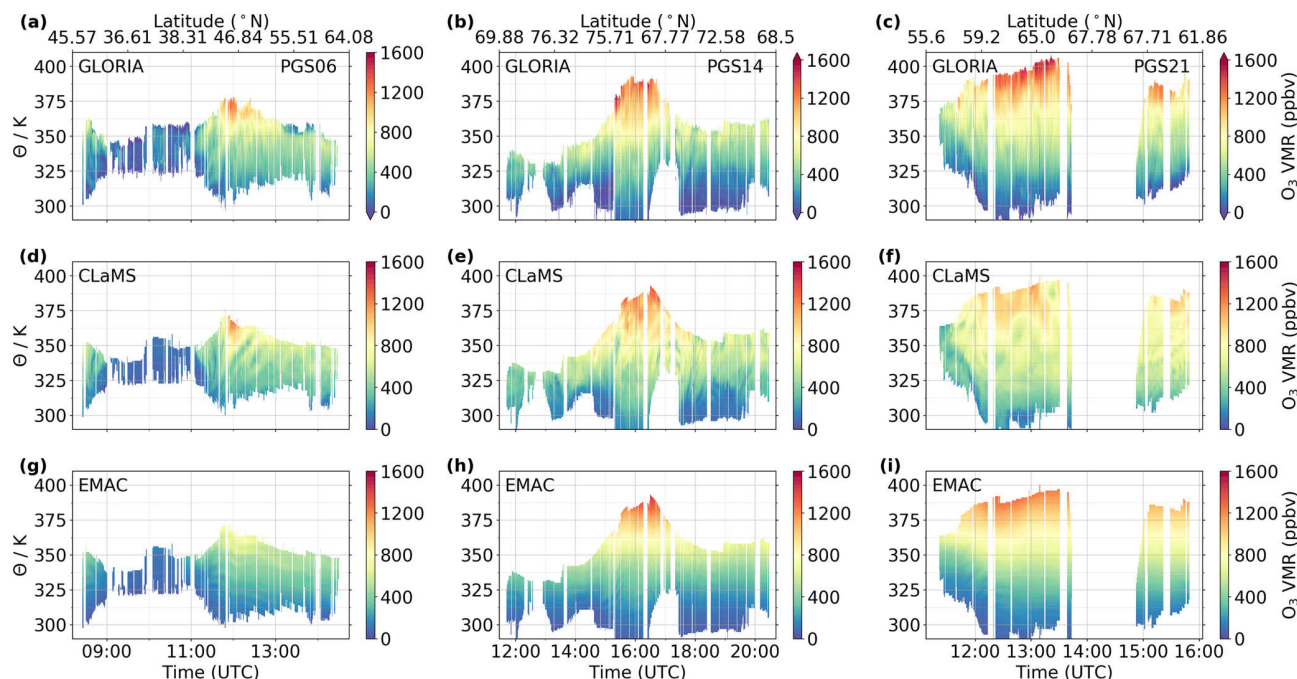
The CLaMS results have been compared to various observations of Arctic winters, which led to important improvements of this model (e.g., Groöß et al., 2014, 2018; Tritscher et al., 2019). For the EMAC model, comparisons with different observations of Arctic winters have also been performed (e.g., Khosrawi et al., 2017, 2018). Still, those previous comparisons focus on the stratosphere and comparisons in the LMS are only marginally discussed. Complex dynamical situations, which may occur in the LMS, are challenging for atmospheric modeling. Thus, comparisons in this altitude region are beneficial to benchmark the performance of these models.

The GLORIA cross sections of  $\text{O}_3$  and  $\text{ClONO}_2$  are compared to the CLaMS and EMAC model results in Figs. 8 and 9. CLaMS output has been interpolated to GLORIA geolocations as described in Sect. 2.3.1. The globally available EMAC data have been interpolated linearly to the GLORIA tangent point geolocations. ECMWF operational analysis pressure, linearly interpolated to the GLORIA tangent

point geolocations, is used to assign the EMAC model vertical levels (provided on pressure levels) to the GLORIA retrieval altitudes of the measurements. EMAC model output was provided every 5 h.

For  $\text{O}_3$  on flight PGS06 (Fig. 8a, d, g), the low tropospheric VMR values that can be found above Italy (09:00–11:00 UTC) are as well reproduced by CLaMS (compared to GLORIA) as enhanced values above central and northern Europe. Maximum modeled values at 12:00 UTC of 1200 ppbv are slightly lower than measured (1400 ppbv) but agree within the total estimated error of the instrument. A local minimum of  $\text{O}_3$  observed at flight altitude after 13:00 UTC is not present in CLaMS or EMAC but is suspected to be influenced by a slight degradation of the GLORIA measurements due to PSCs (see in situ comparisons in Johansson et al., 2018a, Supplement). The comparison with EMAC shows that the overall structure of measured  $\text{O}_3$  (low values above northern Italy, enhanced values over northern Europe) is reproduced by the model, but maximum values at 12:00 UTC are lower in the model (700 ppbv) compared to the measurement (1400 ppbv).

For PGS14 (Fig. 8b, e, h), the measured distribution of  $\text{O}_3$  over the course of the flight is well reproduced by CLaMS, and fine structures (e.g., at 18:00 UTC) are also clearly visible in both data sets. For the enhanced  $\text{O}_3$  VMRs in the middle of the flight (15:00–17:00 UTC), the absolute values are measured to be higher but agree within their total estimated errors with CLaMS. In this region, structures are also visible in the model data that are less pronounced in the measurements. At  $\theta = 300$ – $350$  K altitude, higher VMRs are visible in the model data compared to the GLORIA observations. The  $\text{O}_3$  VMR values simulated by EMAC reproduce the overall measured vertical structure, although finer



**Figure 8.** Comparison of GLORIA-measured (a, d, g, repeated from Figs. 5 to 7 with a different color bar) to CLaMS- (b, e, g) and EMAC-simulated (c, f, i) O<sub>3</sub> cross sections for flights PGS06 (12 January 2016, a, b, c), PGS14 (26 February 2016, d, e, f), and PGS21 (18 March 2016, g, h, i). Color bars with top and/or bottom arrowheads indicate data greater and/or smaller than the color bar range.

features in the trace gas distributions are not visible due to the horizontal resolution of EMAC ( $\approx 125$  km) compared to GLORIA (along-track sampling  $\approx 3$  km, horizontal resolution along viewing direction several 10–100 km; see also Woiwode et al., 2018).

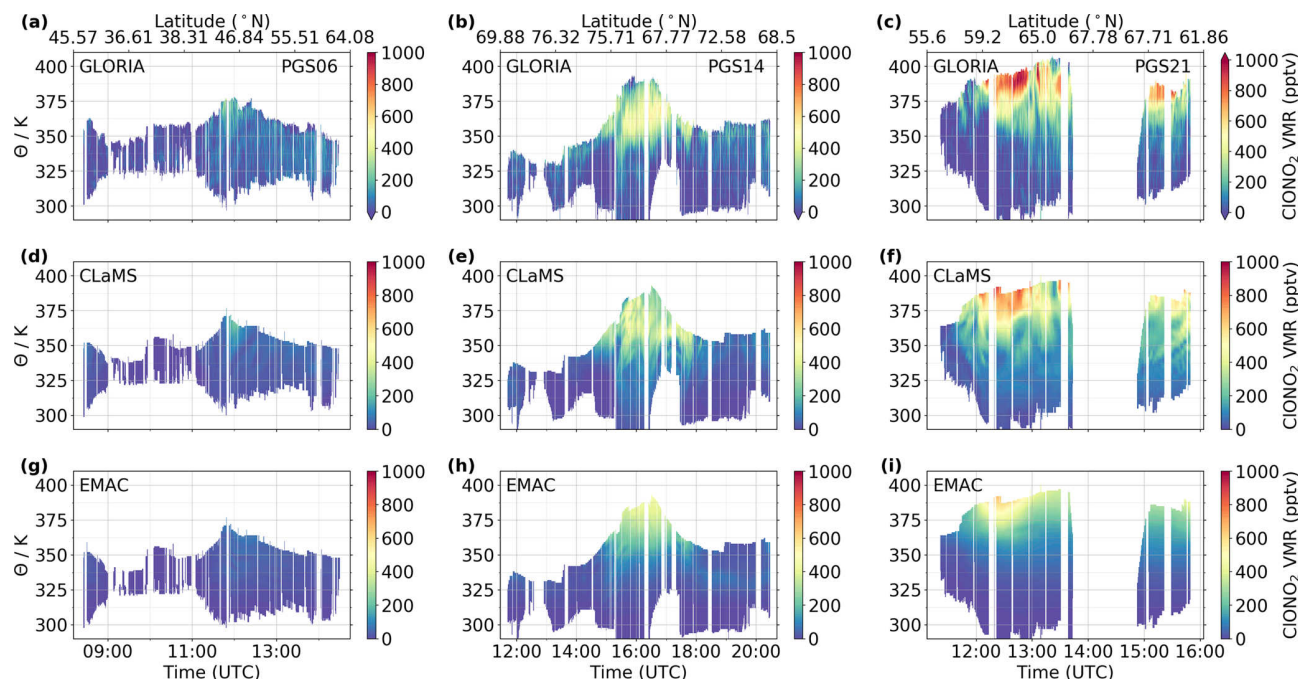
During the late winter PGS21 flight (Fig. 8c, f, i), the modeled and measured two-dimensional distributions of O<sub>3</sub> again generally agree between CLaMS and GLORIA, and higher VMR values are again modeled than observed at  $\theta = 300$ –350 K altitude. Here again finer structures are visible in the CLaMS data, and higher absolute VMRs ( $> 1600$  ppbv) are measured than modeled (1100 ppbv) at 400 K, with the difference between them comparable to the total estimated error of the GLORIA data. The EMAC simulation of this flight shows maximum values of O<sub>3</sub> (up to 1500 ppbv) that are marginally higher than those from CLaMS and closer to those measured by GLORIA. EMAC again largely succeeds in reproducing the measured two-dimensional trace gas distribution but with less detail in the small-scale structures than measured by GLORIA (see also Khosrawi et al., 2017).

CIONO<sub>2</sub> on flight PGS06 shows the same maximum of 250 pptv at  $\theta = 370$  K altitude (12:00 UTC) for CLaMS as for GLORIA (see Fig. 9a, d). Two-dimensional structures with weak CIONO<sub>2</sub> enhancements are found at lower altitudes and show slightly different patterns in the two data sets. In EMAC, the simulated enhancement of CIONO<sub>2</sub> is barely visible with the color bar used but is  $< 100$  pptv smaller than that which was measured (Fig. 9a, g).

For flight PGS14, the CIONO<sub>2</sub> small-scale structures of GLORIA and CLaMS again generally agree (see Fig. 9b, e). The maxima found in the CIONO<sub>2</sub> distribution around 16:00 UTC coincide in both data sets in terms of position and absolute values. Compared to the GLORIA measurements, there are more structures in the area where CIONO<sub>2</sub> values are largest in the CLaMS data (as for O<sub>3</sub>), but all measured structures are also apparent in the model. The comparison to EMAC (see Fig. 9b, h) shows similar maximum values, but the two-dimensional structure of CIONO<sub>2</sub> is different: the measured local maximum below flight altitude is not reproduced by the model, which shows the CIONO<sub>2</sub> maximum at 370 K flight altitude, while GLORIA shows a local maximum at 360 K.

Flight PGS21 shows higher values in measured CIONO<sub>2</sub> compared to CLaMS (see Fig. 9c, f). Besides the overall agreement of the data, the increased CIONO<sub>2</sub> values at  $\theta = 330$ –350 K altitude in the model simulation do not match the measured patterns well. For this flight, EMAC simulates the maximum of CIONO<sub>2</sub> at a similar position compared to the measurements, and most measured enhancements are also evident in the model data (see Fig. 9c, i). Though this agreement in structure is within expectations given the horizontal resolution of EMAC, the absolute values of CIONO<sub>2</sub> in the model (up to 600 pptv) differ substantially from the measured VMRs (1100 pptv), indicating an underestimation of CIONO<sub>2</sub> in the model simulation.





**Figure 9.** Comparison of GLORIA-measured (a, d, g, repeated from Figs. 5 to 7 with a different color bar) to CLaMS- (b, e, h) and EMAC-simulated (c, f, i) CIONO<sub>2</sub> cross sections for flights PGS06 (12 January 2016, a, b, c), PGS14 (26 February 2016, d, e, f), and PGS21 (18 March 2016, g, h, i). Color bars with top and/or bottom arrowheads indicate data greater and/or smaller than the color bar range.

These comparisons show that the measured two-dimensional structures in O<sub>3</sub> and CIONO<sub>2</sub> are well captured in the CLaMS simulation, albeit with some differences in the magnitude of the features. The comparisons to EMAC show general agreement with the measurements, considering the spatial resolution of the model. The differences in the models' representations of measured trace gas distributions are expected to result from resolution and dynamics rather than from the modeled chemistry, as both models are based on the same chemistry scheme (see Sect. 2.3). CLaMS is a Lagrangian CTM, in which transport and chemical reactions are simulated along trajectories following specified meteorological fields. EMAC is an Eulerian CCM, which uses a defined grid on which the chemical processes are simulated. Transport and dynamical processes are taken into account by the coupling between grid points (Khosrawi et al., 2005; Morgenstern et al., 2017). These different model approaches are also reflected in the comparison of simulated trace gases to GLORIA measurements. While the EMAC simulation used here has been performed on a grid with  $1.125^\circ \times 1.125^\circ$  resolution, in the Lagrangian model CLaMS the number of trajectories in the region of interest can be optimized for advanced interpolation methods. For this reason EMAC succeeds in generally reproducing the chemical composition (for O<sub>3</sub> and CIONO<sub>2</sub>) of the measured UTLS regions, while CLaMS is able to reproduce even small-scale structures in these trace gases. Better agreement is expected for an EMAC simulation with higher horizontal resolution (e.g., T255). Improvements

are desirable for both models in the simulation of CIONO<sub>2</sub> in the late winter (flight PGS21), when maximum measured VMRs are underestimated. EMAC is known to underestimate downward transport in the lower parts of the polar vortex (Brühl et al., 2007; Khosrawi et al., 2017), and CLaMS also shows diabatic descent that is too weak towards the end of the Arctic winter (see Sect. 3.2). Together with the strong vertical gradient of both gases in this region, less downward transport of the model results in smaller trace gas abundances at lower altitudes. Differences in maximum values between GLORIA and EMAC for flight PGS06 appear in both discussed trace gases and can most likely be attributed to the limited horizontal resolution of EMAC because the enhancement seen on flight PGS06 appears to be spatially very confined. Nevertheless, these comparisons confirm the results of Khosrawi et al. (2017) that EMAC, though a chemistry–climate model, can be applied in support of aircraft campaigns and as a valuable data set not only for flight analyses but also for process studies and realistic future projections. CLaMS data for flight PGS21 shows higher VMRs of O<sub>3</sub> at  $\theta = 325$  K and of CIONO<sub>2</sub> at  $\theta = 340$  K compared to the measurements, despite the observed lack of descent at 380 K. This enhanced CLaMS O<sub>3</sub> is also visible in the passive O<sub>3</sub> tracer (not shown), which indicates that this disagreement with the GLORIA measurements is caused by problems in horizontal transport or in the lower boundary conditions of CLaMS. These problems are not unexpected, as CLaMS is a stratospheric model by design. In addition, mixing is difficult

to model, but CLaMS has been proven to successfully reproduce mixing during the Arctic winter 2015/16 (Krause et al., 2018).

#### 4 CLaMS investigations of chemical evolution

The measurements presented in Sect. 3 revealed unusual chlorine deactivation in the satellite time series and interesting mesoscale structures with unusually high ClONO<sub>2</sub> VMRs for the Arctic in the GLORIA measurements. We have shown that CLaMS successfully reproduces structures in the LMS measured by MLS and GLORIA. For this reason, these validated model simulations are applied to examine the influence of ozone depletion and PSC sedimentation on chlorine deactivation. In the second part of this section, the origin of measured ClONO<sub>2</sub> in the LMS is investigated.

##### 4.1 Influence of ozone depletion and denitrification on chlorine deactivation

NO<sub>y</sub> and O<sub>3</sub> abundances are known to have a major influence on chlorine deactivation pathways, and those abundances are strongly affected by denitrification and ozone loss, respectively. In Sect. 3.1, the partitioning of chlorine reservoirs in 2016 was identified to be unusual for an Arctic winter, and therefore CLaMS sensitivity simulations have been performed to understand and quantify the influence of ozone depletion and PSC sedimentation on chlorine deactivation.

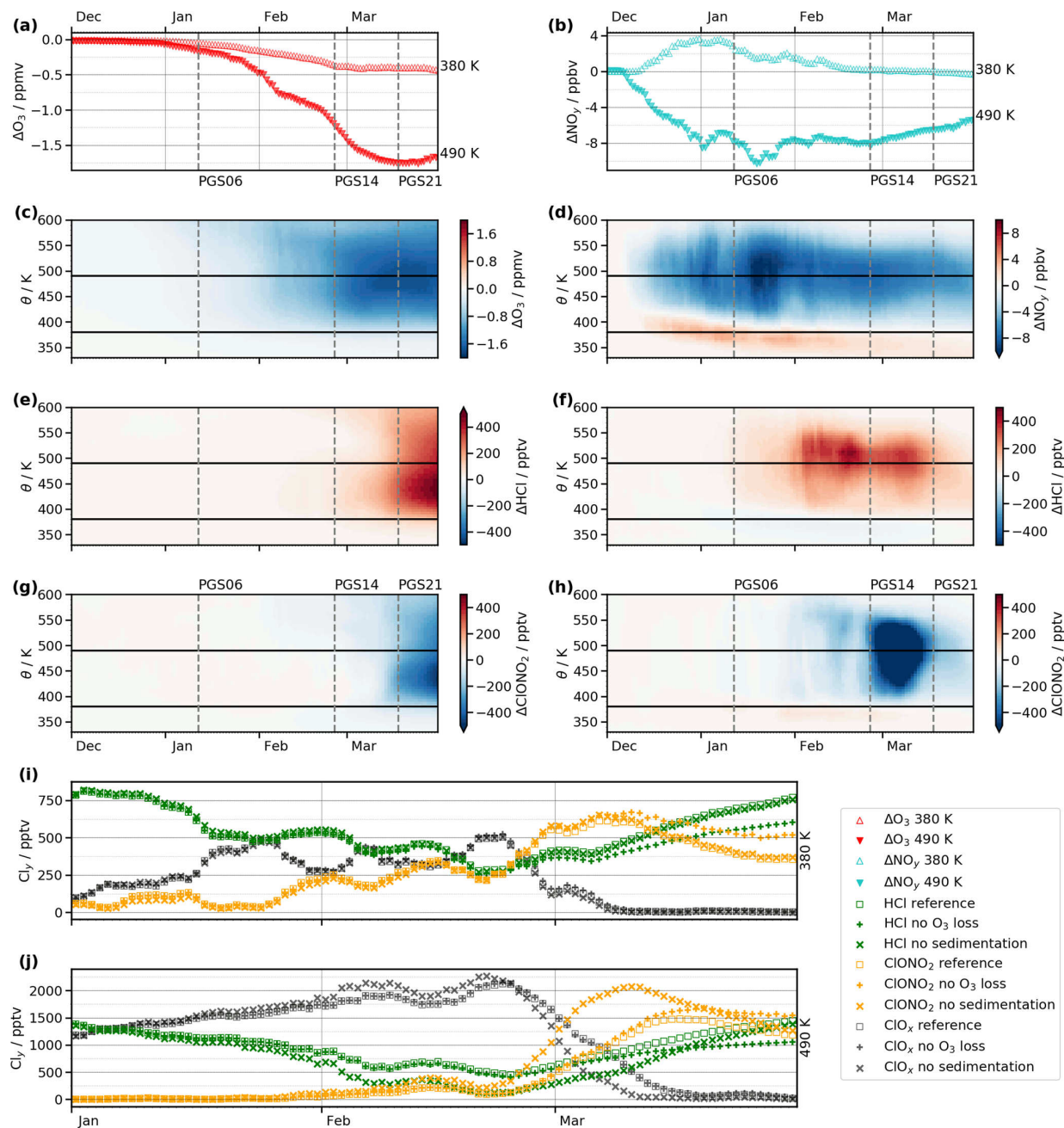
The sensitivity run without ozone depletion has been facilitated by replacing the CLaMS O<sub>3</sub> with the passive O<sub>3</sub> tracer at the beginning of each simulation step. This passive O<sub>3</sub> tracer is initialized, transported, and mixed in the same way as the regular O<sub>3</sub> field, but it does not experience ozone-depleting processes. The difference between the passive O<sub>3</sub> and the standard O<sub>3</sub> is a measure of chemical ozone loss and is presented as a time series at 380 and 490 K (Fig. 10a) and as a cross section between 330 and 600 K (Fig. 10c). Due to the definition of the passive O<sub>3</sub> tracer, this presented ozone loss may be caused by both heterogeneous and gas-phase chemical reaction types. According to Singleton et al. (2005), mostly heterogeneous reactions are responsible for ozone depletion. These difference-based time series show that ozone depletion starts in the beginning of January and reaches its maximum in the middle of March. The largest ozone depletion is simulated at 490 K, with maximum VMR differences of 1.75 ppmv. The influence of ozone depletion on HCl and ClONO<sub>2</sub> is illustrated in Fig. 10e, g as differences between the reference and the sensitivity simulation without ozone depletion. Negative differences (shades of blue) indicate how much the chlorine reservoir is diminished due to the effect of ozone depletion, while positive differences (shades of red) show enhancements due to this effect. HCl exhibits a positive response to ozone depletion, and starting from the beginning of March, more than 500 pptv additional chlorine is deacti-

vated into HCl under ozone-depleted conditions. At the same time, ClONO<sub>2</sub> is reduced by more than 500 pptv due to ozone depletion. These differences for both reservoir gases peak at altitudes of 440 K towards the end of March. Interestingly, this peak altitude is lower than the altitude of greatest ozone loss (490 K).

For the sensitivity run without PSC sedimentation, a CLaMS simulation was performed without the sedimentation module (see Sect. 2.3.1). Differences in NO<sub>y</sub> between the reference and the sensitivity simulation are presented in Fig. 10b, d as time series at 380 and 490 K and as cross sections. Nitrification up to 4 ppbv is seen at 380 K in early winter and later at lower altitudes, while denitrification is largest (up to 10 ppbv) at 490 K in the middle of January. The effect on HCl and ClONO<sub>2</sub> (Fig. 10f, h) shows an enhancement of HCl, which reaches its maximum (500 pptv) in the middle of February, and a decrease in ClONO<sub>2</sub>, which reaches its extreme (> 500 pptv) in the beginning of March. A weak opposite effect is observed at lower altitudes (< 380 K), where nitrification is observed.

Absolute values of HCl, ClONO<sub>2</sub>, and ClO<sub>x</sub> at 380 and 490 K are presented in Fig. 10i, j for the reference and both sensitivity simulations. At 380 K, differences up to 200 pptv between the reference and the O<sub>3</sub> sensitivity simulation (“+”) are visible in the reservoirs in March, with more ClONO<sub>2</sub> and less HCl in the simulation without ozone depletion. PSC sedimentation (“x”) only has a weak influence at 380 K on the temporal evolution of the chlorine reservoirs and ClO<sub>x</sub>, with small differences visible around the time of the final warming in the beginning of March. At 490 K, differences in the reservoirs between the reference and the O<sub>3</sub> sensitivity run increase to 300 pptv, starting in the beginning of March. Again, more ClONO<sub>2</sub> and less HCl is modeled for the sensitivity simulation without ozone depletion. A larger change in the chlorine partitioning is observed for the sensitivity simulation without PSC sedimentation: starting towards the end of January, less HCl and more ClO<sub>x</sub> is simulated, and by the beginning of March a substantial increase in ClONO<sub>2</sub> with a difference of 1000 pptv compared to the reference is found. During that time, ClO<sub>x</sub> decreases faster and HCl is consistently lower in comparison to the reference simulation. At the end of March, the sensitivity simulation without PSC sedimentation approaches the reference simulation for all presented species.

The sensitivity simulations by CLaMS help to quantify the effect of ozone depletion and PSC sedimentation on the observed unusual chlorine deactivation in 2016. The sensitivity simulation without ozone depletion showed that at 380 K, low ozone abundances (< 1.0 ppmv) caused 200 pptv of chlorine to be deactivated into HCl instead of ClONO<sub>2</sub>. These ozone abundances are not as low (< 0.5 ppmv) as those found in previous studies (Prather and Jaffe, 1990; Douglass et al., 1995; Groöß et al., 1997, 2005; Mickley et al., 1997), but, as demonstrated by Douglass and Kawa (1999), even higher ozone abundances than 0.5 ppmv to-



**Figure 10.** CLaMS vortex average (equivalent latitude  $> 75^\circ$  N) time series for ozone loss at 380 and 490 K (a) and as a cross section (c). Denitrification is presented in the same manner (b, d). Differences in HCl and ClONO<sub>2</sub> between a reference simulation and a simulation without the influence of ozone depletion (e, g) or PSC sedimentation (f, h). Altitudes of 380 and 490 K, which are illustrated in other panels, are marked with horizontal lines. The bottom panels show ClO<sub>x</sub> (black), HCl (green), and ClONO<sub>2</sub> (orange) for the reference simulation (open squares) and for the sensitivity simulations without ozone depletion (+) and without PSC sedimentation (x) at 380 K (i) and 490 K (j). Please note that these time series, in contrast to others in this figure, start in January.

gether with cold temperatures are able to change chlorine deactivation. The different altitudes of the maxima observed in ozone loss (490 K) and changes in chlorine species (440 K) may be explained by the vertically increasing ozone VMR profile in the LMS. At 490 K, the absolute chemical ozone loss ( $\approx 1.75$  ppmv) is larger than at 440 K ( $\approx 1.2$  ppmv), but the total ozone VMR is still larger at 490 K ( $\approx 2.5$  ppmv) than at 440 K ( $\approx 1.5$  ppmv, see also Fig. 3). According to Douglass and Kawa (1999), the absolute ozone VMR is important for the chlorine deactivation partitioning and not the chemical ozone loss.

The availability of  $\text{NO}_y$  does not play a significant role in chlorine partitioning at 380 K. This may be explained by the fact that CLaMS does not simulate denitrification at 380 K (see Fig. 10b) and that the availability of  $\text{NO}_y$  is not limited due to PSC sedimentation at this level. Thus, there is little difference between the control and sensitivity simulations in this case. At 490 K, the reduced availability of  $\text{O}_3$  caused a relatively small proportion of chlorine (300 pptv) to be deactivated into HCl instead of  $\text{ClONO}_2$ . The decreased availability of  $\text{NO}_y$  (as a consequence of PSC sedimentation) induces major differences of up to 1000 pptv in  $\text{ClONO}_2$ .

The two sensitivity simulations reveal different time and altitude ranges in which they have the strongest impact on chlorine deactivation: while  $\text{O}_3$  abundances affect the partitioning of the reservoirs from the beginning of March (with a maximum towards the end of March), the availability of  $\text{NO}_y$  has the maximum effect on HCl between February and the middle of March and on  $\text{ClONO}_2$  around the major warming in the beginning of March. These sensitivity simulations also show impacts over different altitude ranges: the effect of  $\text{O}_3$  depletion leads to notable differences between reference and sensitivity simulation starting from 380 K, with maximal differences at 440 K. The effect of sedimentation of  $\text{HNO}_3$ -containing particles on the chlorine reservoirs shows a large impact between 400 and 550 K. A small opposite effect is observed at altitudes below 380 K due to re-nitrification. The differences in HCl and  $\text{ClONO}_2$  for ozone sensitivity appear to be very symmetrical: positive differences in HCl correspond to negative differences in  $\text{ClONO}_2$  at approximately the same time and altitude and with roughly the same magnitude. This is because  $\text{O}_3$  abundances influence the partitioning of Cl and ClO, which directly determines whether chlorine is deactivated into HCl or  $\text{ClONO}_2$  (Douglass and Kawa, 1999). For the sensitivity to PSC sedimentation, this symmetry between the differences in the chlorine reservoirs is not observed. Without PSC sedimentation, the chlorine activation is already changed by the end of January, while PSCs are present and chlorine activation is still possible. During this time, in the absence of denitrification, more  $\text{ClONO}_2$  is produced due to the greater availability of  $\text{NO}_y$ , assuming that there is sufficient sunlight in the vortex to photolyze  $\text{HNO}_3$  to produce  $\text{NO}_2$ . Together with available HCl, this re-generated  $\text{ClONO}_2$  is then activated on PSCs, which results in net chlorine activation. In March, chlorine is deactivated

into  $\text{ClONO}_2$  to a considerably larger extent, again due to the greater availability of  $\text{NO}_y$ . The impact over different altitude ranges of the two sensitivity simulations implies that the observed unusually strong chlorine deactivation into HCl at 380 K (see Sect. 3.1) was predominantly driven by low  $\text{O}_3$ . At 490 K, where denitrification was much stronger than at 380 K, it was mainly the low  $\text{NO}_y$  that shifted chlorine deactivation towards HCl, while the low  $\text{O}_3$  abundances only played a minor role.

The passive  $\text{O}_3$  tracer of CLaMS also allows estimation of chemical ozone loss of 0.4 ppmv at 380 K and 1.75 ppmv at 490 K. Since the comparisons to the MLS indicate that CLaMS overestimates  $\text{O}_3$  towards the end of the winter, possibly because of deficiencies in its representation of dynamical processes, these estimates of ozone loss should be regarded as a lower boundary. Comparisons based on MLS data show that only a few other Arctic winters have experienced chemical ozone loss in the LMS as large as that in 2015/16 (Livesey et al., 2015; Santee et al., 2017).

## 4.2 Origin of $\text{ClONO}_2$ measured by GLORIA

In order to investigate the temporal evolution of the chemical composition at geolocations measured by GLORIA, CLaMS is used to calculate 11 d backward trajectories from these measurement geolocations. Then the model variables from the global model run are interpolated to these geolocations 11 d before the measurement, and CLaMS performs its Lagrangian simulation along the trajectory leading to the measurement. Along this trajectory, variables are saved at a temporal resolution of 1 h. Because the chemical composition is simulated only along the trajectories, mixing was not considered for this simulation. As discussed by Konopka et al. (2003), mixing is regarded to have a weak influence on chlorine deactivation. This explains differences in CLaMS  $\text{ClONO}_2$  cross sections between Figs. 9 and 11. A similar approach to investigate chlorine activation along backward trajectories was reported by Lelieveld et al. (1999) but based on in situ measurements of HCl and with a focus on chlorine activation on cirrus clouds.

The cross sections at the trajectory ending points are shown in Fig. 11a–d for flight PGS14 for  $\text{ClONO}_2$  and HCl as the reservoir gases and for ClO as one of the major active chlorine species at these altitudes. Regions of interest are identified and marked, according to the validated  $\text{ClONO}_2$  cross section: the local maximum of  $\text{ClONO}_2$  at 16:00 UTC and  $\theta = 360$  K is marked with a magenta “star” symbol, another local maximum at 16:40 UTC and  $\theta = 370$  K is marked green, and the last substantial local maximum at 17:45 UTC and  $\theta = 355$  K is marked blue. In the ClO cross section a maximum is modeled at 16:35 UTC and  $\theta = 385$  K, which is marked cyan. CLaMS backward trajectories within a horizontal distance of 25 km and a vertical distance of  $\theta = 5$  K from these marked geolocations are selected for further analysis. These selected trajectories are projected on a map in

Fig. 11d. It can be seen that the majority of these air parcels stay confined within a well-defined region, which is expected to be the polar vortex.

For flight PGS21, results from this trajectory analysis are presented in the same manner (Fig. 11e–h). Regions of interest are identified at different locations of enhanced  $\text{ClONO}_2$  values at 12:10 UTC and  $\theta = 380$  K (red), 13:25 UTC and  $\theta = 390$  K (dark blue) and 15:20 UTC and  $\theta = 380$  K (light green). Trajectories in the vicinity of these points are selected as described for flight PGS14. In the map projection of these trajectories (Fig. 11h), it can be seen that these air masses have been confined above Greenland (red) or have been circulating above Siberia (dark blue, light green) until they migrated to Scandinavia, where they were measured. The tracks of these trajectories are consistent with the meteorological situation of an eroding polar vortex during the time of flight PGS21.

The temporal evolution along these selected trajectories is shown for both flights in Fig. 12 for (a) potential temperature, (b) the solar zenith angle (SZA), (c)  $\text{ClONO}_2$ , (d)  $\text{HCl}$ , (e)  $\text{ClO}_x$  ( $= \text{ClO} + 2\text{Cl}_2\text{O}_2 + 2\text{Cl}_2$ ), (f)  $\text{ClO}$ , (g)  $\text{Cl}_2\text{O}_2$ , and (h)  $\text{Cl}_2$ . The mean of all selected trajectories belonging to a point of interest is presented as a solid line in the corresponding color, while minimum and maximum values are marked with shading in the same color.

#### 4.2.1 Flight on 26 February 2016 (PGS14)

Potential temperatures (Fig. 12a1) show persistent downwelling along all selected trajectories, and the SZA (Fig. 12b1) indicates long periods in darkness. These first two panels provide context for the temporal evolution of the chlorine species.

The magenta curves, which have been defined to end at the region with the highest  $\text{ClONO}_2$  in the cross section, show persistently high VMRs for  $\text{ClONO}_2$  between 250 and 500 pptv and  $\text{HCl}$  values around 375 pptv. These persistently high VMRs in the chlorine reservoir species indicate that chlorine deactivation mainly occurred prior to the end point of the 11 d back-trajectory and that these deactivated air masses have been transported to the GLORIA measurement location. Both chlorine reservoirs slightly increase during the first 4 d (until 18 February 2016), decrease for 3 d (until 20 February 2016), and then increase again, with a stronger increase seen in  $\text{ClONO}_2$ . The active chlorine species (as a sum shown in  $\text{ClO}_x$ ) for the magenta curves remain at low levels ( $< 250$  pptv) and show enhancements when the chlorine reservoirs are at lower values.

The green curves end at a local maximum of 340 pptv of  $\text{ClONO}_2$  at  $\theta = 370$  K. This enhanced value was reached due to an increase within the last 5 d. In the beginning of these 11 d trajectories,  $\text{ClONO}_2$  started at VMRs of approximately 375 pptv until 17 February 2016 and then decreased to minimum values on 20 February 2016. The temporal evolution of  $\text{HCl}$  shows a similar slope: the mean value of these trajec-

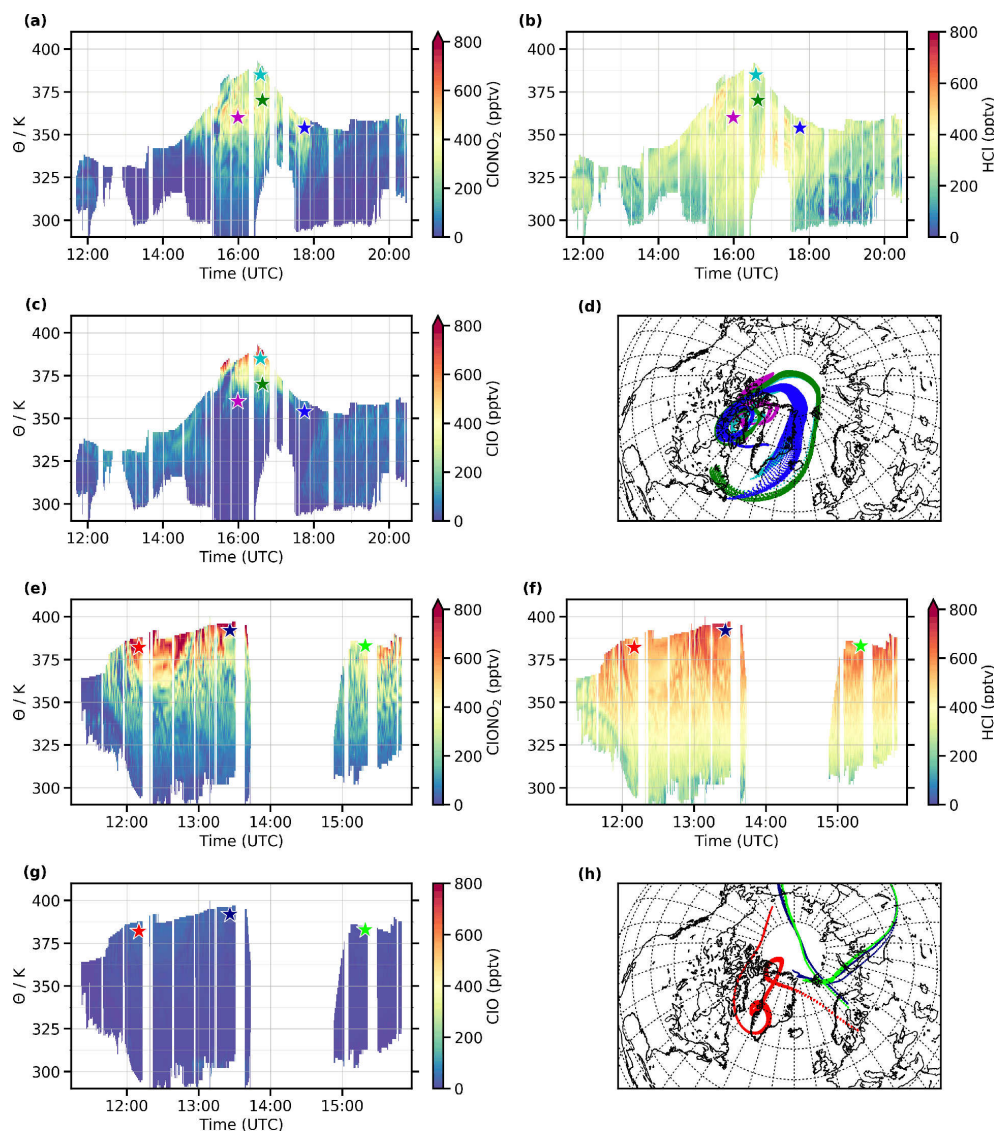
tries starts at a VMR of 470 pptv, which increases on the same timescale as  $\text{ClONO}_2$  to 500 pptv, decreases to 125 pptv and finally increases to 320 pptv. During the time of  $\text{ClONO}_2$  and  $\text{HCl}$  decrease,  $\text{Cl}_2$  builds up to 270 pptv until it suddenly decreases to 0 pptv on 21 February 2016. At the same time, which coincides with the first exposure of this air parcel to sunlight since 16 February 2016 (according to the SZA), the VMR of  $\text{ClO}$  rapidly increases and then decreases again (with signatures of its diurnal cycle), while the reservoirs ( $\text{ClONO}_2$  and  $\text{HCl}$ ) increase again along with the decrease of  $\text{ClO}_x$ . The  $\text{ClO}$  dimer increases first on 17 February 2016, when  $\text{Cl}_2$  starts to rise and increases again on 18 February 2016. In addition to the substantial increase in  $\text{ClO}$  on 21 February 2016, the  $\text{ClO}$  dimer also rapidly increases to 100 pptv but then decreases again.

The blue curves show a similar course compared to the green ones but at lower potential temperature altitudes. Due to these different altitudes, the blue curves start with lower availability of chlorine reservoirs. At first (17 February 2016 and the beginning of 18 February 2016)  $\text{Cl}_2$  along the blue trajectory exceeds that on the green trajectory, but ultimately less chlorine is activated (see  $\text{Cl}_2$ ) because the blue parcels saw less sunlight than the green parcels on 16 February 2016 and none on 17 February 2016. This also results in less  $\text{ClO}$  after exposure to sunlight (21 February 2016), but these lower amounts of  $\text{ClO}$  are initially deactivated slightly more rapidly into  $\text{ClONO}_2$  compared to the green curve. During the last 3 d of this trajectory, the green and the blue curves are almost identical for the chlorine reservoirs.

As an example of enhanced  $\text{ClO}$  values at the end of the trajectories, the cyan curves (which are at higher potential temperature altitudes of 385 K) also show a similar course compared to the green curves during the last 5 d before the measurement. In the beginning of the presented 11 d, the reservoir gases decrease to low VMR levels earlier (16 February 2016) than they did for the green point.  $\text{ClO}_x$  values are highest compared to other trajectory sets. The amount of accumulated  $\text{Cl}_2$  is similar to that in the blue parcels (175 pptv) with the same times of sunlight exposure on 21 and 22 February 2016.  $\text{ClO}$  also shows a similar evolution compared to the green course (if one considers the different altitudes, which are presumably the reason for the higher VMRs in the beginning) until the last 5 d, when  $\text{ClO}$  increases considerably along the cyan trajectory. This increase goes along with a decrease of the  $\text{ClO}$  dimer, which is significantly higher along the entire trajectory compared to all other curves, reaching mean values up to 440 pptv on 20 February 2016.

For all selected points, there are regions in which the minimum and maximum values (indicated by the colored shading) vary substantially from the mean value, which indicates strong variability even for trajectories that end at geolocations within a horizontal distance of 25 km and  $\theta = 5$  K altitude.





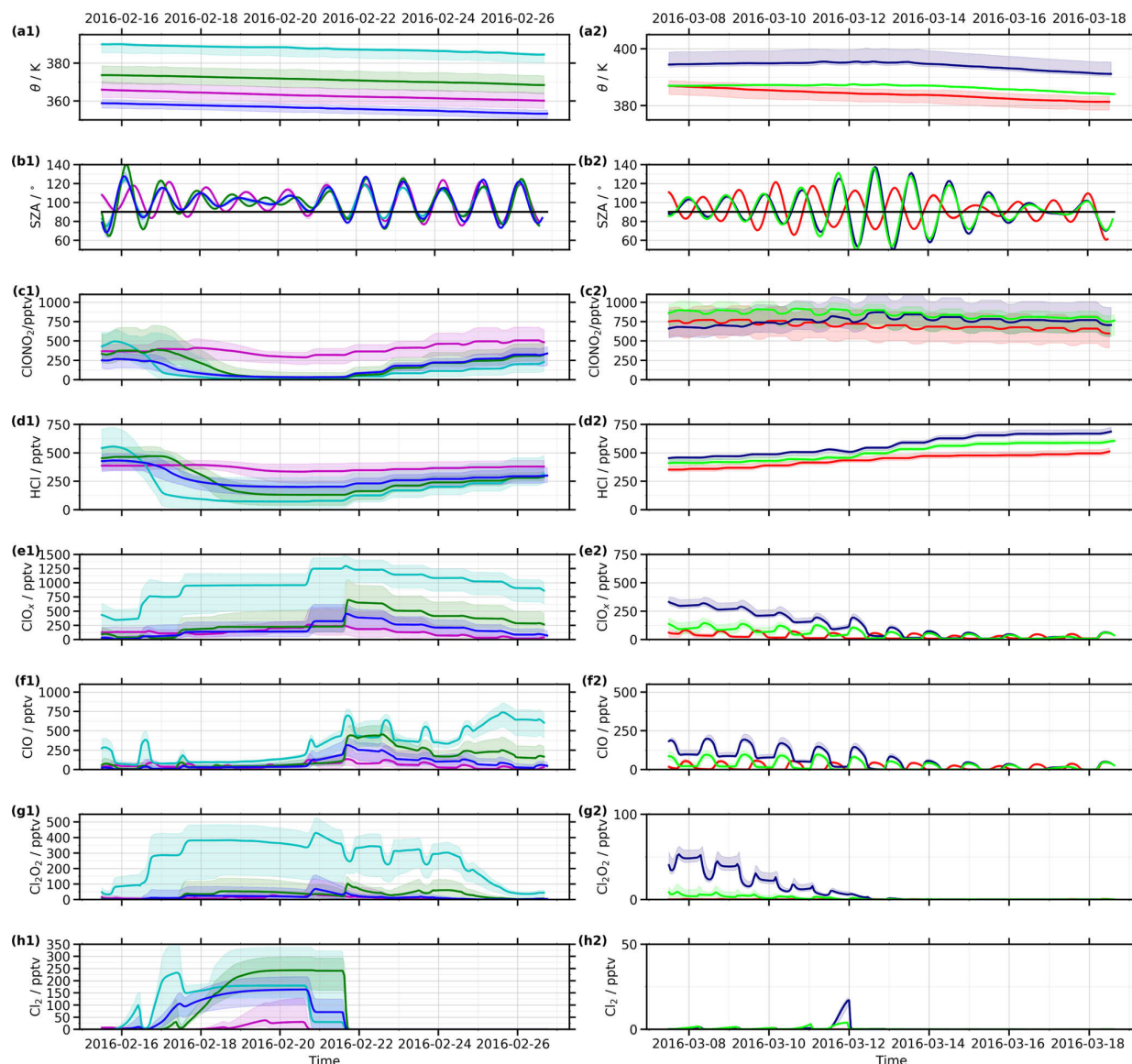
**Figure 11.** Cross sections for (a, e) CIONO<sub>2</sub>, (b, f) HCl, and (c, g) ClO at the end of CLaMS trajectories leading to the GLORIA tangent point geolocations for flights PGS14 (a)–(d) and PGS21 (e)–(h). Regions of interest are marked with colored star symbols. The 11 d backward trajectories calculated for each flight by CLaMS are shown on the map (d, h) in corresponding colors. The underlain map (bold black lines show coastal lines, and dotted lines indicate a latitude by longitude grid) shows the northern polar region and is centered at 80° N latitude and 20° W longitude.

#### 4.2.2 Flight on 18 March 2016 (PGS21)

In contrast to flight PGS14, sunlight is available along all selected trajectories of flight PGS21 on a daily basis, according to the SZA (Fig. 12b2). Based on the potential temperature, continuous subsidence is observed for the red trajectory set, while for the light-green and dark-blue trajectories the air parcels are slightly uplifted until 13 March 2016 and then subside with a similar slope compared to the other trajectories. ClO<sub>x</sub> (Fig. 12e2) predominantly consists of ClO for all selected trajectories during that time of the year.

The red set of trajectories was selected due to the enhanced CIONO<sub>2</sub> values at the measurement location. The history of this enhancement in CIONO<sub>2</sub> shows a slight overall decrease (from 760 to 630 pptv), with decreasing and increasing features due to the diurnal cycle. HCl increases stepwise from 380 to 500 pptv, and ClO<sub>x</sub> shows diurnal enhancements during the sunlit periods up to 60 pptv.

For the light-green air parcels, CIONO<sub>2</sub> slowly decreases from 900 to 750 pptv, with fluctuations due to the diurnal cycle. HCl starts at 400 pptv and ends at 600 pptv by increasing in small steps. ClO shows a small diurnal cycle with maximum values up to 100 pptv.



**Figure 12.** Modeled temporal evolution of (a) potential temperature, (b) solar zenith angle (SZA, the  $90^\circ$  threshold is marked with a black line), (c)  $\text{ClONO}_2$ , (d)  $\text{HCl}$ , (e)  $\text{ClO}_x$ , (f)  $\text{ClO}$ , (g)  $\text{Cl}_2\text{O}_2$ , and (h)  $\text{Cl}_2$  for (1) flight PGS14 (left column) and (2) flight PGS21 (right column). These trajectories are color-coded as defined in Fig. 11(a)–(c) and (e)–(g). Solid lines show the mean of all trajectories connected with these regions and the light colors show minimum and maximum values among those trajectories. Please note the different ordinate scales in each column.

The highest potential temperature trajectory end point for this flight is marked in dark blue.  $\text{ClONO}_2$  increases from 670 to 870 pptv and then decreases again to 700 pptv with fluctuations due to the diurnal cycle. These dark-blue trajectories show the largest increase in  $\text{HCl}$  (from 450 to 700 pptv). The diurnal cycle also dominates the evolution of  $\text{ClO}$ , with maximum values up to 200 pptv superimposed on a baseline value of 100 pptv that persists until 13 March 2016. During this period small (50 pptv) remnants of  $\text{Cl}_2\text{O}_2$  are also visible.

For most of these selected trajectory sets it can be observed that the variability is smaller compared to the ones for PGS14, especially for chlorine species other than  $\text{ClONO}_2$ .

#### 4.2.3 Discussion

According to chemical tracers along CLaMS backward trajectories, enhanced  $\text{ClONO}_2$  measured by GLORIA on 26 February 2016 was mainly a result of chlorine deactivation within the last 5 d before the measurement. We also presented an example of air masses that had been deactivated prior to the end point of the 11 d back-trajectory and then

transported to the GLORIA measurement location. Our results also revealed substantial variability among trajectories initialized within a given region of interest (marked by the shaded area: 25 km horizontal and  $\theta = 5$  K vertical coincidence). This variability indicates that small changes in the ending point of the trajectories result from different chemical histories of the air parcels.

For flight PGS21 in mid-March, the ClONO<sub>2</sub> along the trajectories shows constantly high VMRs, modulated by the diurnal cycle. Since this flight took place well after the final warming (5–6 March; Manney and Lawrence, 2016), there had been no recent PSC formation or chlorine activation, and almost all of the measured enhanced ClONO<sub>2</sub> had been produced by chlorine deactivation that took place at least 11 d before the measurement. Changes in ClONO<sub>2</sub>, ClO<sub>x</sub> (which consists mainly of ClO, with small contributions from Cl<sub>2</sub>O<sub>2</sub> at this time), and HCl can be explained by the photolysis of ClONO<sub>2</sub>, which results in a diurnal cycle (Brasseur and Solomon, 2005). This photolysis diminishes ClONO<sub>2</sub> and creates Cl (or a small fraction of ClO) during sunlit portions of the trajectories (Burkholder et al., 2015). These products can either react in ozone loss cycles, during which the fractions of Cl and ClO may change (see Solomon, 1999) or build chlorine reservoirs again: ClO reacts with NO<sub>2</sub> to ClONO<sub>2</sub>, while Cl reacts to HCl. Therefore, not all of the ClONO<sub>2</sub> photolysis products ultimately go on to regenerate ClONO<sub>2</sub>. Thus, HCl increases in a stepwise fashion, while ClONO<sub>2</sub> decreases. As was demonstrated with CLaMS sensitivity simulations, preferential deactivation into HCl is caused by low O<sub>3</sub> abundances as a consequence of ozone depletion.

In summary, enhanced ClONO<sub>2</sub> measured in February, for the most part, had recently been (within the prior few days) deactivated in situ in the LMS, while in March almost all of the measured enhanced ClONO<sub>2</sub> had been transported longer than 11 d.

## 5 Conclusions

This study analyzes chlorine activation and deactivation in the Arctic winter 2015/16 lowermost stratosphere (LMS) by utilizing time series of satellite measurements, aircraft remote-sensing measurements from the GLORIA instrument during the PGS campaigns, and simulations by the atmospheric models CLaMS and EMAC. The analysis of ACE-FTS and MLS time series shows the unusual nature of the Arctic winter 2015/16: the time series of HCl has defined a new minimum in the Arctic at  $\theta = 380$  K during the Aura/MLS epoch, followed by an unusually rapid increase in HCl. For several parts of the winter, ClO also showed maximum values within the instrument's record. Although ozone loss was greater in 2010/11, 2015/16 was a winter with extraordinary large ozone loss (Livesey et al., 2015; Santee et al., 2017), estimated by CLaMS to be at least 0.4 ppmv at 380 K and 1.75 ppmv at 490 K. The (for the Arctic) unusual

chlorine deactivation has been identified through CLaMS sensitivity studies to result at 380 K from low O<sub>3</sub> abundances rather than from low NO<sub>y</sub> availability caused by PSC sedimentation. At higher potential temperatures (as shown at 490 K), denitrification played a greater role.

During this exceptional Arctic winter, the GLORIA instrument observed strongly enhanced ClONO<sub>2</sub> up to 1100 pptv in the LMS. GLORIA measurements of both O<sub>3</sub> and ClONO<sub>2</sub> show mesoscale structures in the two-dimensional vertical cross sections. The comparisons of the highly resolved GLORIA cross sections of O<sub>3</sub> and ClONO<sub>2</sub> with the models EMAC and CLaMS are useful evaluations of two different approaches (Eulerian CCM and Lagrangian CTM) for modeling the chemical composition of the UTLS. The comparison of EMAC model data with measurements shows agreement within the limitations expected due to its relatively coarse resolution compared to CLaMS and GLORIA. In addition, well-known problems of EMAC's diabatic descent are observed in the comparisons, but generally it is shown that EMAC can support aircraft campaigns for process studies and realistic future projections. CLaMS benefits from its higher spatial resolution and reproduces the measurements even for detailed small-scale structures. For the late winter flight PGS21, CLaMS shows more O<sub>3</sub> and ClONO<sub>2</sub> than GLORIA at lower potential temperature altitudes (330–340 K), which indicates that CLaMS could be improved concerning boundary conditions at low altitudes, horizontal transport, and mixing. Discrepancies at 380 K between measurements (MLS CH<sub>3</sub>Cl and GLORIA O<sub>3</sub> and ClONO<sub>2</sub>) and CLaMS data also suggest potential for improvement in the model's representation of diabatic descent in the LMS. Generally, comparisons of CLaMS with MLS demonstrate overall agreement, while differences in HCl reflect well-known problems with modeled chlorine activation, which also have consequences for O<sub>3</sub> and ClO.

The origin of observed enhanced ClONO<sub>2</sub> at selected points in the LMS is reconstructed with an analysis of the chemical composition along trajectories leading to the measurement geolocations provided by CLaMS. As expected, this analysis shows that both transport of ClONO<sub>2</sub> and in situ deactivation at lower altitudes are simulated in the model for the selected February flight. Large variability among trajectories ending in the same vicinity shows that small changes in the path of an air parcel may strongly influence its course of chlorine activation and deactivation due to different encounters with PSCs and different amounts of available NO<sub>y</sub>, O<sub>3</sub>, and sunlight. For the flight in March 2016, the enhanced measured ClONO<sub>2</sub> is a result of transport, as illustrated by the chemical composition along the CLaMS trajectories.

Due to climate change, exceptionally cold winters are expected to occur more frequently in the future (Fels et al., 1980; Hartmann et al., 2014; WMO, 2015), which may in particular impact ozone in the Arctic LMS. These expected changes in ozone and chlorine activation and deactivation processes emphasize the importance of regular observations

of the chemical composition of the atmosphere, with a particular focus on the LMS.

**Data availability.** The discussed GLORIA data set is available at the HALO database (<https://doi.org/10.17616/R39Q0T>; HALO consortium, 2016) and at the KITopen repository (<https://doi.org/10.5445/IR/1000086506>, Johansson et al., 2018b). Aura/MLS and MERRA-2 data are available at the Goddard Earth Sciences Data and Information Services Center (<https://doi.org/10.5067/AURA/MLS/DATA2017>, Schwartz et al., 2015; <https://doi.org/10.5067/AURA/MLS/DATA2012>, Manney et al., 2019; <https://doi.org/10.5067/AURA/MLS/DATA2010>, Froidevaux et al., 2019; <https://doi.org/10.5067/AURA/MLS/DATA2004>, Santee et al., 2015b; <https://doi.org/10.5067/AURA/MLS/DATA2002>, Santee et al., 2015; and <https://doi.org/10.5067/A7S6XP56VZWS>, GMAO, 2019). ACE-FTS data are located at <https://database.scisat.ca/level2/> (last access: 10 June 2019; ), registration is required for access. Data from the EMAC and CLaMS simulations are available from the authors upon request.

**Author contributions.** SJ initiated the study, performed the analyses, and wrote the manuscript. MLS aided with the handling and interpretation of Aura/MLS data, significantly contributed to the analyses, and refined the manuscript. JUG and IT performed the CLaMS simulations and helped to interpret this model data. MH, JU, WW, MB, and SJ processed and analyzed GLORIA data. FFV and EK, together with the GLORIA team, performed the GLORIA measurements during the PGS campaigns. FK and OK performed and interpreted the EMAC simulations. KAW helped with the usage and interpretation of ACE-FTS data. HO, BMS, and WW organized and coordinated the POLSTRACC campaign. All authors assisted with the interpretation of the results and writing of the manuscript.

**Competing interests.** The authors declare that they have no conflict of interest.

**Special issue statement.** This article is part of the special issue “The Polar Stratosphere in a Changing Climate (POLSTRACC) (ACP/AMT inter-journal SI)”. It is not associated with a conference.

**Acknowledgements.** Sören Johansson gratefully thanks the MLS team for the hospitality during his visit to the Jet Propulsion Laboratory. We gratefully thank the PGS coordination team and the DLR-FX for successfully conducting the field campaign. The results are based on the efforts of all members of the GLORIA team, including the technology institutes ZEA-1 and ZEA-2 at Forschungszentrum Jülich and the Institute for Data Processing and Electronics at the Karlsruhe Institute of Technology. We thank Michael C. Pitts for providing CALIPSO/CALIOP data for the 2015/16 cloud area time series. We thank NASA for providing their MERRA-2 meteorological reanalysis data set.

**Financial support.** The authors gratefully acknowledge the computing time for the CLaMS simulations granted on the supercomputer JURECA at Jülich Supercomputing Centre (JSC) under the VSR project ID JICG11. Sören Johansson has received funding from the European Community’s Seventh Framework Programme (FP7/2007–2013) under grant agreement 603557. The Atmospheric Chemistry Experiment (ACE), also known as SCISAT, is a Canadian-led mission mainly supported by the Canadian Space Agency.

The article processing charges for this open-access publication were covered by a Research Centre of the Helmholtz Association. Sören Johansson gratefully thanks the Graduate School for Climate and Environment (GRACE), Karlsruhe Institute of Technology, for funding his visit to the Jet Propulsion Laboratory to discuss the Aura/MLS measurements. Work at the Jet Propulsion Laboratory, California Institute of Technology, was done under contract with the National Aeronautics and Space Administration. This work was partly supported by the German Research Foundation (Deutsche Forschungsgemeinschaft, DFG Priority Program SPP 1294).

**Review statement.** This paper was edited by Mathias Palm and reviewed by two anonymous referees.

## References

- ACE/SCISAT: Database, ACE-FTS Level 2 Data, MAESTRO Level 2 Data, available at: <https://database.scisat.ca/level2/>, last access: 10 June 2019.
- Andersson, M. E., Verronen, P. T., Marsh, D. R., Päiväranta, S., and Plane, J. M. C.: WACCM-D-Improved modeling of nitric acid and active chlorine during energetic particle precipitation, *J. Geophys. Res.-Atmos.*, 121, 10328–10341, <https://doi.org/10.1002/2015JD024173>, 2016.
- Beaver, G. M. and Russell, J. M.: The climatology of stratospheric HCL and HF observed by HALOE, *Adv. Space Res.*, 21, 1373–1382, [https://doi.org/10.1016/S0273-1177\(97\)00745-X](https://doi.org/10.1016/S0273-1177(97)00745-X), 1998.
- Bernath, P. F.: The Atmospheric Chemistry Experiment (ACE), *J. Quant. Spectrosc. Rad. Transf.*, 186, 3–16, <https://doi.org/10.1016/j.jqsrt.2016.04.006>, 2017.
- Borrmann, S., Solomon, S., Dye, J. E., and Luo, B.: The potential of cirrus clouds for heterogeneous chlorine activation, *Geophys. Res. Lett.*, 23, 2133–2136, <https://doi.org/10.1029/96GL01957>, 1996.
- Brasseur, G. and Solomon, S.: *Aeronomy of the middle atmosphere: Chemistry and physics of the stratosphere and mesosphere*, Vol. 32 of Atmospheric and oceanographic sciences library, Springer, Dordrecht and [Great Britain], 3rd rev. and enl. edn., 2005.
- Braun, M., Groß, J.-U., Woiwode, W., Johansson, S., Höpfner, M., Friedl-Vallon, F., Oelhaf, H., Preusse, P., Ungermann, J., Sinnhuber, B.-M., Ziereis, H., and Braesicke, P.: Nitric acid of the lowermost stratosphere during the exceptionally cold Arctic winter 2015/16, *Atmos. Chem. Phys. Discuss.*, <https://doi.org/10.5194/acp-2019-108>, in review, 2019.
- Brown, A. T., Volk, C. M., Schoeberl, M. R., Boone, C. D., and Bernath, P. F.: Stratospheric lifetimes of CFC-12, CCl<sub>4</sub>,

- CH<sub>4</sub>, CH<sub>2</sub>Cl and N<sub>2</sub>O from measurements made by the Atmospheric Chemistry Experiment-Fourier Transform Spectrometer (ACE-FTS), *Atmos. Chem. Phys.*, 13, 6921–6950, <https://doi.org/10.5194/acp-13-6921-2013>, 2013.
- Brühl, C., Steil, B., Stiller, G., Funke, B., and Jöckel, P.: Nitrogen compounds and ozone in the stratosphere: Comparison of MIPAS satellite data with the chemistry climate model ECHAM5/MESy1, *Atmos. Chem. Phys.*, 7, 5585–5598, <https://doi.org/10.5194/acp-7-5585-2007>, 2007.
- Burkholder, J. B., Sander, S. P., Abbatt, J., Barker, J. R., Huie, R. E., Kolb, C. E., Kurylo, M. J., Orkin, V. L., Wilmouth, D. M., and Wine, P. H.: Chemical Kinetics and Photochemical Data for Use in Atmospheric Studies, Evaluation No. 18, JPL Publication, 15–10, available at: <http://jpldataeval.jpl.nasa.gov> (last access: 10 June 2019), 2015.
- Carslaw, K. S.: A vortex-scale simulation of the growth and sedimentation of large nitric acid hydrate particles, *J. Geophys. Res.*, 107, 1913, <https://doi.org/10.1029/2001JD000467>, 2002.
- Carslaw, K. S., Luo, B. P., Clegg, S. L., Peter, T., Brimblecombe, P., and Crutzen, P. J.: Stratospheric aerosol growth and HNO<sub>3</sub> gas phase depletion from coupled HNO<sub>3</sub> and water uptake by liquid particles, *Geophys. Res. Lett.*, 21, 2479–2482, <https://doi.org/10.1029/94GL02799>, 1994.
- Carslaw, K. S., Clegg, S. L., and Brimblecombe, P.: A Thermodynamic Model of the System HCl–HNO<sub>3</sub>–H<sub>2</sub>SO<sub>4</sub>–H<sub>2</sub>O, Including Solubilities of HBr, from < 200 to 328 K, *The J. Phys. Chem.*, 99, 11557–11574, <https://doi.org/10.1021/j100029a039>, 1995a.
- Carslaw, K. S., Luo, B., and Peter, T.: An analytic expression for the composition of aqueous HNO<sub>3</sub>–H<sub>2</sub>SO<sub>4</sub> stratospheric aerosols including gas phase removal of HNO<sub>3</sub>, *Geophys. Res. Lett.*, 22, 1877–1880, <https://doi.org/10.1029/95GL01668>, 1995b.
- Dessler, A. E., Considine, D. B., Morris, G. A., Schoeberl, M. R., Russell, J. M., Roche, A. E., Kumer, J. B., Mergenthaler, J. L., Waters, J. W., Gille, J. C., and Yue, G. K.: Correlated observations of HCl and ClONO<sub>2</sub> from UARS and implications for stratospheric chlorine partitioning, *Geophys. Res. Lett.*, 22, 1721–1724, <https://doi.org/10.1029/95GL01593>, 1995.
- Douglass, A. R. and Kawa, S. R.: Contrast between 1992 and 1997 high-latitude spring Halogen Occultation Experiment observations of lower stratospheric HCl, *J. Geophys. Res.-Atmos.*, 104, 18739–18754, <https://doi.org/10.1029/1999JD900281>, 1999.
- Douglass, A. R., Schoeberl, M. R., Stolarski, R. S., Waters, J. W., Russell, J. M., Roche, A. E., and Massie, S. T.: Inter-hemispheric differences in springtime production of HCl and ClONO<sub>2</sub> in the polar vortices, *J. Geophys. Res.*, 100, 13967, <https://doi.org/10.1029/95JD00698>, 1995.
- Dufour, G., Nassar, R., Boone, C. D., Skelton, R., Walker, K. A., Bernath, P. F., Rinsland, C. P., Semeniuk, K., Jin, J. J., McConnell, J. C., and Manney, G. L.: Partitioning between the inorganic chlorine reservoirs HCl and ClONO<sub>2</sub> during the Arctic winter 2005 from the ACE-FTS, *Atmos. Chem. Phys.*, 6, 2355–2366, <https://doi.org/10.5194/acp-6-2355-2006>, 2006.
- Dunkerton, T. J. and Delisi, D. P.: Evolution of potential vorticity in the winter stratosphere of January–February 1979, *J. Geophys. Res.-Atmos.* (1984–2012), 91, 1199–1208, <https://doi.org/10.1029/JD091iD01p01199>, 1986.
- Fahey, D. W., Kelly, K. K., Kawa, S. R., Tuck, A. F., Loewenstein, M., Chan, K. R., and Heidt, L. E.: Observations of denitrification and dehydration in the winter polar stratospheres, *Nature*, 344, 321–324, <https://doi.org/10.1038/344321a0>, 1990.
- Fels, S. B., Mahlman, J. D., Schwarzkopf, M. D., and Sinclair, R. W.: Stratospheric Sensitivity to Perturbations in Ozone and Carbon Dioxide: Radiative and Dynamical Response, *J. Atmos. Sci.*, 37, 2265–2297, [https://doi.org/10.1175/1520-0469\(1980\)037<2265:SSTPIO>2.0.CO;2](https://doi.org/10.1175/1520-0469(1980)037<2265:SSTPIO>2.0.CO;2), 1980.
- Friedl-Vallon, F., Gulde, T., Hase, F., Kleinert, A., Kulesa, T., Maucher, G., Neubert, T., Olschewski, F., Piesch, C., Preusse, P., Rongen, H., Sartorius, C., Schneider, H., Schönfeld, A., Tan, V., Bayer, N., Blank, J., Dapp, R., Ebersoldt, A., Fischer, H., Graf, F., Guggenmoser, T., Höpfner, M., Kaufmann, M., Kretschmer, E., Latzko, T., Nordmeyer, H., Oelhaf, H., Orphal, J., Riese, M., Schardt, G., Schillings, J., Sha, M. K., Suminska-Ebersoldt, O., and Ungermann, J.: Instrument concept of the imaging Fourier transform spectrometer GLORIA, *Atmos. Meas. Tech.*, 7, 3565–3577, <https://doi.org/10.5194/amt-7-3565-2014>, 2014.
- Froidevaux, L., Jiang, Y. B., Lambert, A., Livesey, N. J., Read, W. G., Waters, J. W., Browell, E. V., Hair, J. W., Avery, M. A., McGee, T. J., Twigg, L. W., Sumnicht, G. K., Jucks, K. W., Margitan, J. J., Sen, B., Stachnik, R. A., Toon, G. C., Bernath, P. F., Boone, C. D., Walker, K. A., Filipiak, M. J., Harwood, R. S., Fuller, R. A., Manney, G. L., Schwartz, M. J., Daffer, W. H., Drouin, B. J., Cofield, R. E., Cuddy, D. T., Jarnot, R. F., Knosp, B. W., Perun, V. S., Snyder, W. V., Stek, P. C., Thurstans, R. P., and Wagner, P. A.: Validation of Aura Microwave Limb Sounder stratospheric ozone measurements, *J. Geophys. Res.-Atmos.*, 113, D15S20, <https://doi.org/10.1029/2007JD008771>, 2008a.
- Froidevaux, L., Jiang, Y. B., Lambert, A., Livesey, N. J., Read, W. G., Waters, J. W., Fuller, R. A., Marcy, T. P., Popp, P. J., Gao, R. S., Fahey, D. W., Jucks, K. W., Stachnik, R. A., Toon, G. C., Christensen, L. E., Webster, C. R., Bernath, P. F., Boone, C. D., Walker, K. A., Pumphrey, H. C., Harwood, R. S., Manney, G. L., Schwartz, M. J., Daffer, W. H., Drouin, B. J., Cofield, R. E., Cuddy, D. T., Jarnot, R. F., Knosp, B. W., Perun, V. S., Snyder, W. V., Stek, P. C., Thurstans, R. P., and Wagner, P. A.: Validation of Aura Microwave Limb Sounder HCl measurements, *J. Geophys. Res.-Atmos.*, 113, D15S20, <https://doi.org/10.1029/2007JD009025>, 2008b.
- Froidevaux, L., Livesey, N., and Read, W.: MLS/Aura Level 2 Hydrogen Chloride (HCl) Mixing Ratio V004, <https://doi.org/10.5067/Aura/MLS/DATA2010>, 2019.
- Gelaro, R., McCarty, W., Suárez, M. J., Todling, R., Molod, A., Takacs, L., Randles, C. A., Darmenov, A., Bosilovich, M. G., Reichle, R., Wargan, K., Coy, L., Cullather, R., Draper, C., Akella, S., Buchard, V., Conaty, A., da Silva, A. M., Gu, W., Kim, G.-K., Koster, R., Lucchesi, R., Merkova, D., Nielsen, J. E., Parityka, G., Pawson, S., Putman, W., Rienecker, M., Schubert, S. D., Sienkiewicz, M., and Zhao, B.: The Modern-Era Retrospective Analysis for Research and Applications, Version 2 (MERRA-2), *J. Climate*, 30, 5419–5454, <https://doi.org/10.1175/JCLI-D-16-0758.1>, 2017.
- Geggelman, A., Hoor, P., Pan, L. L., Randel, W. J., Hegglin, M. I., and Birner, T.: The extratropical Upper Troposphere and Lower Stratosphere, *Rev. Geophys.*, 49, RG000355, <https://doi.org/10.1029/2011RG000355>, 2011.
- Glathoff, N., von Clarmann, T., Fischer, H., Grabowski, U., Höpfner, M., Kellmann, S., Kiefer, M., Linden, A., Milz, M., Steck, T., Stiller, G. P., Tsidu, G. M., Wang, D., and



- Funke, B.: Spaceborne ClO observations by the Michelson Interferometer for Passive Atmospheric Sounding (MIPAS) before and during the Antarctic major warming in September/October 2002, *J. Geophys. Res.-Atmos.*, 109, D11307, <https://doi.org/10.1029/2003JD004440>, 2004.
- Global Modeling and Assimilation Office (GMAO): MERRA-2 inst6\_3d\_ana\_Np: 3d,6-Hourly,Instantaneous,Pressure-Level,Analysis,Analyzed Meteorological Fields V5.12.4, <https://doi.org/10.5067/A7S6XP56VZWS>, 2019.
- Groß, J.-U., Pierce, R. B., Crutzen, P. J., Grose, W. L., and Russell, J. M.: Re-formation of chlorine reservoirs in southern hemisphere polar spring, *J. Geophys. Res.*, 102, 13141–13152, <https://doi.org/10.1029/96JD03505>, 1997.
- Groß, J.-U., Günther, G., Müller, R., Konopka, P., Bausch, S., Schlager, H., Voigt, C., Volk, C. M., and Toon, G. C.: Simulation of denitrification and ozone loss for the Arctic winter 2002/2003, *Atmos. Chem. Phys.*, 5, 1437–1448, <https://doi.org/10.5194/acp-5-1437-2005>, 2005.
- Groß, J.-U., Brauttsch, K., Pommrich, R., Solomon, S., and Müller, R.: Stratospheric ozone chemistry in the Antarctic: what determines the lowest ozone values reached and their recovery?, *Atmos. Chem. Phys.*, 11, 12217–12226, <https://doi.org/10.5194/acp-11-12217-2011>, 2011.
- Groß, J.-U., Engel, I., Borrmann, S., Frey, W., Günther, G., Hoyle, C. R., Kivi, R., Luo, B. P., Molleker, S., Peter, T., Pitts, M. C., Schlager, H., Stiller, G., Vömel, H., Walker, K. A., and Müller, R.: Nitric acid trihydrate nucleation and denitrification in the Arctic stratosphere, *Atmos. Chem. Phys.*, 14, 1055–1073, <https://doi.org/10.5194/acp-14-1055-2014>, 2014.
- Groß, J.-U., Müller, R., Spang, R., Tritscher, I., Wegner, T., Chipperfield, M. P., Feng, W., Kinnison, D. E., and Madronich, S.: On the discrepancy of HCl processing in the core of the wintertime polar vortices, *Atmos. Chem. Phys.*, 18, 8647–8666, <https://doi.org/10.5194/acp-18-8647-2018>, 2018.
- HALO consortium: HALO database, Registry of Research Data Repositories, <https://doi.org/10.17616/R39Q0T>, 2016.
- Hartmann, D. L., Klein Tank, A., Rusticucci, M., Alexander, L. V., Brönnimann, S., Charabi, Y., Dentener, F. J., Dlugokencky, E. J., Easterling, D. R., Kaplan, A., Soden, B. J., Thorne, P. W., Wild, M., and Zhai, P. M.: Observations: Atmosphere and Surface, in: *Climate Change 2013 – The Physical Science Basis*, edited by: IPCC, Cambridge University Press, 2014.
- Höpfner, M.: Derivatives and interface to the retrieval, in: *The Karlsruhe Optimized and Precise Radiative transfer Algorithm (KOPRA)*, edited by: Stiller, G. P., Wissenschaftliche Berichte, 133–144, Forschungszentrum Karlsruhe, 2000.
- Höpfner, M., von Clarmann, T., Fischer, H., Glatthor, N., Grabowski, U., Kellmann, S., Kiefer, M., Linden, A., Tsidu, G. M., Milz, M., Steck, T., Stiller, G. P., Wang, D. Y., and Funke, B.: First spaceborne observations of Antarctic stratospheric ClONO<sub>2</sub> recovery: Austral spring 2002, *J. Geophys. Res.-Atmos.*, 109, D11308, <https://doi.org/10.1029/2004JD004609>, 2004.
- Johansson, S., Woiwode, W., Höpfner, M., Friedl-Vallon, F., Kleinert, A., Kretschmer, E., Latzko, T., Orphal, J., Preusse, P., Ungermann, J., Santee, M. L., Jurkat-Witschas, T., Marsing, A., Voigt, C., Giez, A., Krämer, M., Rolf, C., Zahn, A., Engel, A., Sinnhuber, B.-M., and Oelhaf, H.: Airborne limb-imaging measurements of temperature, HNO<sub>3</sub>, O<sub>3</sub>, ClONO<sub>2</sub>, H<sub>2</sub>O and CFC-12 during the Arctic winter 2015/2016: characterization, in situ validation and comparison to Aura/MLS, *Atmos. Meas. Tech.*, 11, 4737–4756, <https://doi.org/10.5194/amt-11-4737-2018>, 2018a.
- Johansson, S., Woiwode, W., and Höpfner, M.: GLORIA Chemistry Mode temperature and trace gas retrievals from the POLSTRACC/GW-LCYCLEII/GWEX/SALSA campaigns 2015/2016, <https://doi.org/10.5445/IR/1000086506>, 2018b.
- Jurkat, T., Voigt, C., Kaufmann, S., Groß, J., Ziereis, H., Dörnbrack, A., Hoor, P., Bozem, H., Engel, A., Bönisch, H., Keber, T., Hüneke, T., Pfeilsticker, K., Zahn, A., Walker, K. A., Boone, C. D., Bernath, P. F., and Schlager, H.: Depletion of ozone and reservoir species of chlorine and nitrogen oxide in the lower Antarctic polar vortex measured from aircraft, *Geophys. Res. Lett.*, 44, 6440–6449, <https://doi.org/10.1002/2017GL073270>, 2017.
- Jöckel, P., Kerkweg, A., Pozzer, A., Sander, R., Tost, H., Riede, H., Baumgaertner, A., Gromov, S., and Kern, B.: Development cycle 2 of the Modular Earth Submodel System (MESSy2), *Geosci. Model Dev.*, 3, 717–752, <https://doi.org/10.5194/gmd-3-717-2010>, 2010.
- Khosrawi, F., Groß, J.-U., Müller, R., Konopka, P., Kouker, W., Ruhnke, R., Reddmann, T., and Riese, M.: Intercomparison between Lagrangian and Eulerian simulations of the development of mid-latitude streamers as observed by CRISTA, *Atmos. Chem. Phys.*, 5, 85–95, <https://doi.org/10.5194/acp-5-85-2005>, 2005.
- Khosrawi, F., Kirner, O., Sinnhuber, B.-M., Johansson, S., Höpfner, M., Santee, M. L., Froidevaux, L., Ungermann, J., Ruhnke, R., Woiwode, W., Oelhaf, H., and Braesicke, P.: Denitrification, dehydration and ozone loss during the 2015/2016 Arctic winter, *Atmos. Chem. Phys.*, 17, 12893–12910, <https://doi.org/10.5194/acp-17-12893-2017>, 2017.
- Khosrawi, F., Kirner, O., Stiller, G., Höpfner, M., Santee, M. L., Kellmann, S., and Braesicke, P.: Comparison of ECHAM5/MESSy Atmospheric Chemistry (EMAC) simulations of the Arctic winter 2009/2010 and 2010/2011 with Envisat/MIPAS and Aura/MLS observations, *Atmos. Chem. Phys.*, 18, 8873–8892, <https://doi.org/10.5194/acp-18-8873-2018>, 2018.
- Kirner, O., Ruhnke, R., Buchholz-Dietsch, J., Jöckel, P., Brühl, C., and Steil, B.: Simulation of polar stratospheric clouds in the chemistry-climate-model EMAC via the submodel PSC, *Geosci. Model Dev.*, 4, 169–182, <https://doi.org/10.5194/gmd-4-169-2011>, 2011.
- Kleinert, A., Friedl-Vallon, F., Guggenmoser, T., Höpfner, M., Neubert, T., Ribalda, R., Sha, M. K., Ungermann, J., Blank, J., Ebersoldt, A., Kretschmer, E., Latzko, T., Oelhaf, H., Olschewski, F., and Preusse, P.: Level 0 to 1 processing of the imaging Fourier transform spectrometer GLORIA: generation of radiometrically and spectrally calibrated spectra, *Atmos. Meas. Tech.*, 7, 4167–4184, <https://doi.org/10.5194/amt-7-4167-2014>, 2014.
- Konopka, P., Groß, J.-U., Günther, G., McKenna, D. S., Müller, R., Elkins, J. W., Fahey, D. W., and Popp, P. J.: Weak impact of mixing on chlorine deactivation during SOLVE/THESEO 2000: Lagrangian modeling (CLaMS) versus ER-2 in situ observations, *J. Geophys. Res.*, 108, 8324, <https://doi.org/10.1029/2001JD000876>, 2003.
- Konopka, P., Günther, G., Müller, R., dos Santos, F. H. S., Schiller, C., Ravagnani, F., Ulanovsky, A., Schlager, H., Volk, C. M.,

- Viciani, S., Pan, L. L., McKenna, D.-S., and Riese, M.: Contribution of mixing to upward transport across the tropical tropopause layer (TTL), *Atmos. Chem. Phys.*, 7, 3285–3308, <https://doi.org/10.5194/acp-7-3285-2007>, 2007.
- Krause, J., Hoor, P., Engel, A., Plöger, F., Grooß, J.-U., Bönisch, H., Keber, T., Sinnhuber, B.-M., Woiwode, W., and Oelhaf, H.: Mixing and ageing in the polar lower stratosphere in winter 2015–2016, *Atmos. Chem. Phys.*, 18, 6057–6073, <https://doi.org/10.5194/acp-18-6057-2018>, 2018.
- Lawrence, Z. D. and Manney, G. L.: Characterizing Stratospheric Polar Vortex Variability With Computer Vision Techniques, *J. Geophys. Res.-Atmos.*, 123, 1510–1535, <https://doi.org/10.1002/2017JD027556>, 2018.
- Lelieveld, J., Bregman, A., Scheeren, H. A., Ström, J., Carslaw, K. S., Fischer, H., Siegmund, P. C., and Arnold, F.: Chlorine activation and ozone destruction in the northern lowermost stratosphere, *J. Geophys. Res.-Atmos.*, 104, 8201–8213, <https://doi.org/10.1029/1998JD100111>, 1999.
- Livesey, N. J., Santee, M. L., and Manney, G. L.: A Match-based approach to the estimation of polar stratospheric ozone loss using Aura Microwave Limb Sounder observations, *Atmos. Chem. Phys.*, 15, 9945–9963, <https://doi.org/10.5194/acp-15-9945-2015>, 2015.
- Livesey, N. J., Read, W. G., Wagner, P. A., Froidevaux, L., Lambert, A., Manney, G. L., Millán, L. F., Pumphrey, Hugh, C., Santee, M. L., Schwartz, M. J., Wang, S., Fuller, R. A., Jarnot, R. F., Knosp, B. W., and Martinez, E.: Version 4.2x Level 2 data quality and description document, Earth Observing System (EOS) Aura Microwave Limb Sounder (MLS), available at: [https://mls.jpl.nasa.gov/data/v4-2\\_data\\_quality\\_document.pdf](https://mls.jpl.nasa.gov/data/v4-2_data_quality_document.pdf) (last access: 10 June 2019), 2018.
- Mahieu, E., Duchatelet, P., Demoulin, P., Walker, K. A., Dupuy, E., Froidevaux, L., Randall, C., Catoire, V., Strong, K., Boone, C. D., Bernath, P. F., Blavier, J.-F., Blumenstock, T., Coffey, M., Mazzière, M. D., Griffith, D., Hannigan, J., Hase, F., Jones, N., Jucks, K. W., Kagawa, A., Kasai, Y., Mebarki, Y., Mikuteit, S., Nassar, R., Notholt, J., Rinsland, C. P., Robert, C., Schrems, O., Senten, C., Smale, D., Taylor, J., Tétard, C., Toon, G. C., Warneke, T., Wood, S. W., Zander, R., and Servais, C.: Validation of ACE-FTS v2.2 measurements of HCl, HF, CCl<sub>3</sub>F and CCl<sub>2</sub>F<sub>2</sub> using space-, balloon- and ground-based instrument observations, *Atmos. Chem. Phys.*, 8, 6199–6221, <https://doi.org/10.5194/acp-8-6199-2008>, 2008.
- Manney, G. L. and Lawrence, Z. D.: The major stratospheric final warming in 2016: Dispersal of vortex air and termination of Arctic chemical ozone loss, *Atmos. Chem. Phys.*, 16, 15371–15396, <https://doi.org/10.5194/acp-16-15371-2016>, 2016.
- Manney, G. L., Zurek, R. W., O'Neill, A., and Swinbank, R.: On the Motion of Air through the Stratospheric Polar Vortex, *J. Atmos. Sci.*, 51, 2973–2994, [https://doi.org/10.1175/1520-0469\(1994\)051<2973:OTMOAT>2.0.CO;2](https://doi.org/10.1175/1520-0469(1994)051<2973:OTMOAT>2.0.CO;2), 1994.
- Manney, G. L., Santee, M. L., Rex, M., Livesey, N. J., Pitts, M. C., Veefkind, P., Nash, E. R., Wohltmann, I., Lehmann, R., Froidevaux, L., Poole, L. R., Schoeberl, M. R., Haffner, D. P., Davies, J., Dorokhov, V., Gernandt, H., Johnson, B., Kivi, R., Kyrö, E., Larsen, N., Levelt, P. F., Makshtas, A., McElroy, C. T., Nakajima, H., Parrondo, M. C., Tarasick, D. W., Gathen, P. v. d., Walker, K. A., and Zinoviev, N. S.: Unprecedented Arctic ozone loss in 2011, *Nature*, 478, 469–475, <https://doi.org/10.1038/nature10556>, 2011.
- Manney, G., Santee, M., Froidevaux, L., Livesey, N., and Read, W.: MLS/Aura Level 2 Nitric Acid (HNO<sub>3</sub>) Mixing Ratio V004, <https://doi.org/10.5067/Aura/MLS/DATA2012>, 2019.
- Matthias, V., Dörnbrack, A., and Stober, G.: The extraordinarily strong and cold polar vortex in the early northern winter 2015/2016, *Geophys. Res. Lett.*, 43, 12287–12294, <https://doi.org/10.1002/2016GL071676>, 2016.
- McKenna, D. S., Grooß, J., Günther, G., Konopka, P., Müller, R., Carver, G., and Sasano, Y.: A new Chemical Lagrangian Model of the Stratosphere (CLaMS) 2. Formulation of chemistry scheme and initialization, *J. Geophys. Res.-Atmos.*, 107, 4256, <https://doi.org/10.1029/2000JD000113>, 2002a.
- McKenna, D. S., Konopka, P., Grooß, J., Günther, G., Müller, R., Spang, R., Offermann, D., and Orsolini, Y.: A new Chemical Lagrangian Model of the Stratosphere (CLaMS) 1. Formulation of advection and mixing, *J. Geophys. Res.-Atmos.*, 107, 4309, <https://doi.org/10.1029/2000JD000114>, 2002b.
- Mickley, L. J., Abbatt, J. P. D., Frederick, J. E., and Russell, J. M.: Evolution of chlorine and nitrogen species in the lower stratosphere during Antarctic spring: Use of tracers to determine chemical change, *J. Geophys. Res.*, 102, 21479–21491, <https://doi.org/10.1029/97JD00422>, 1997.
- Morgenstern, O., Hegglin, M. I., Rozanov, E., O'Connor, F. M., Abraham, N. L., Akiyoshi, H., Archibald, A. T., Bekki, S., Butchart, N., Chipperfield, M. P., Deushi, M., Dhomse, S. S., Garcia, R. R., Hardiman, S. C., Horowitz, L. W., Jöckel, P., Josse, B., Kinnison, D., Lin, M., Mancini, E., Manyin, M. E., Marchand, M., Maréchal, V., Michou, M., Oman, L. D., Pitari, G., Plummer, D. A., Revell, L. E., Saint-Martin, D., Schofield, R., Stenke, A., Stone, K., Sudo, K., Tanaka, T. Y., Tilmes, S., Yamashita, Y., Yoshida, K., and Zeng, G.: Review of the global models used within phase 1 of the Chemistry–Climate Model Initiative (CCMI), *Geosci. Model Dev.*, 10, 639–671, <https://doi.org/10.5194/gmd-10-639-2017>, 2017.
- Nakajima, H., Sugita, T., Irie, H., Saitoh, N., Kanzawa, H., Oelhaf, H., Wetzel, G., Toon, G. C., Sen, B., Blavier, J., Traub, W. A., Jucks, K., Johnson, D. G., Yokota, T., and Sasano, Y.: Measurements of ClONO<sub>2</sub> by the Improved Limb Atmospheric Spectrometer (ILAS) in high-latitude stratosphere: New products using version 6.1 data processing algorithm, *J. Geophys. Res.-Atmos.*, 111, D11S09, <https://doi.org/10.1029/2005JD006441>, 2006.
- Nash, E. R., Newman, P. A., Rosenfield, J. E., and Schoeberl, M. R.: An objective determination of the polar vortex using Ertel's potential vorticity, *J. Geophys. Res.-Atmos.* (1984–2012), 101, 9471–9478, <https://doi.org/10.1029/96JD00066>, 1996.
- Phillips, D. L.: A Technique for the Numerical Solution of Certain Integral Equations of the First Kind, *J. ACM (JACM)*, 9, 84–97, <https://doi.org/10.1145/321105.321114>, 1962.
- Pitts, M. C., Poole, L. R., and Gonzalez, R.: Polar stratospheric cloud climatology based on CALIPSO spaceborne lidar measurements from 2006 to 2017, *Atmos. Chem. Phys.*, 18, 10881–10913, <https://doi.org/10.5194/acp-18-10881-2018>, 2018.
- Portmann, R. W., Solomon, S., Garcia, R. R., Thomason, L. W., Poole, L. R., and McCormick, M. P.: Role of aerosol variations in anthropogenic ozone depletion in the

- polar regions, *J. Geophys. Res.-Atmos.*, 101, 22991–23006, <https://doi.org/10.1029/96JD02608>, 1996.
- Prather, M. and Jaffe, A. H.: Global impact of the Antarctic ozone hole: Chemical propagation, *J. Geophys. Res.*, 95, 3473, <https://doi.org/10.1029/JD095iD04p03473>, 1990.
- Roche, A. E., Kumer, J. B., Mergenthaler, J. L., Nightingale, R. W., Uplinger, W. G., Ely, G. A., Potter, J. F., Wuebbles, D. J., Connell, P. S., and Kinnison, D. E.: Observations of Lower-Stratospheric ClONO<sub>2</sub>, HNO<sub>3</sub>, and Aerosol by the UARS CLAES Experiment between January 1992 and April 1993, *J. Atmos. Sci.*, 51, 2877–2902, [https://doi.org/10.1175/1520-0469\(1994\)051<2877:OOLSCH>2.0.CO;2](https://doi.org/10.1175/1520-0469(1994)051<2877:OOLSCH>2.0.CO;2), 1994.
- Rodgers, C. D.: Inverse Methods for Atmospheric Sounding, WORLD SCIENTIFIC, <https://doi.org/10.1142/3171>, 2000.
- Roeckner, E., Brokopf, R., Esch, M., Giorgetta, M., Hagemann, S., Kornbluh, L., Manzini, E., Schlese, U., and Schulzweida, U.: Sensitivity of Simulated Climate to Horizontal and Vertical Resolution in the ECHAM5 Atmosphere Model, *J. Climate*, 19, 3771–3791, <https://doi.org/10.1175/JCLI3824.1>, 2006.
- Sander, S. P., Friedl, R. R., Barker, J. R., Golden, D. M., Kurylo, M. J., Wine, P. H., Abbatt, J., Burkholder, J. B., Kolb, C. E., Moortgat, G. K., Huie, R. E., and Orkin, V. L.: Chemical kinetics and photochemical data for use in atmospheric studies, Evaluation no. 17, JPL Publication, 10-6, available at: <http://jpldataeval.jpl.nasa.gov> (last access: 10 June 2019), 2011.
- Santee, M. L., Tabazadeh, A., Manney, G. L., Salawitch, R. J., Froidevaux, L., Read, W. G., and Waters, J. W.: UARS Microwave Limb Sounder HNO<sub>3</sub> observations: Implications for Antarctic polar stratospheric clouds, *J. Geophys. Res.*, 103, 13285–13313, <https://doi.org/10.1029/98JD00365>, 1998.
- Santee, M. L., Manney, G. L., Livesey, N. J., and Waters, J. W.: UARS Microwave Limb Sounder observations of denitrification and ozone loss in the 2000 Arctic late winter, *Geophys. Res. Lett.*, 27, 3213–3216, <https://doi.org/10.1029/2000GL011738>, 2000.
- Santee, M. L., Lambert, A., Read, W. G., Livesey, N. J., Cofield, R. E., Cuddy, D. T., Daffer, W. H., Drouin, B. J., Froidevaux, L., Fuller, R. A., Jarnot, R. F., Knosp, B. W., Manney, G. L., Perun, V. S., Snyder, W. V., Stek, P. C., Thurstans, R. P., Wagner, P. A., Waters, J. W., Muscari, G., de Zafra, R. L., Dibb, J. E., Fahey, D. W., Popp, P. J., Marcy, T. P., Jucks, K. W., Toon, G. C., Stachnik, R. A., Bernath, P. F., Boone, C. D., Walker, K. A., Urban, J., and Murtagh, D.: Validation of the Aura Microwave Limb Sounder HNO<sub>3</sub> measurements, *J. Geophys. Res.-Atmos.*, 112, 2007JD008721, <https://doi.org/10.1029/2007JD008721>, 2007.
- Santee, M. L., Lambert, A., Read, W. G., Livesey, N. J., Manney, G. L., Cofield, R. E., Cuddy, D. T., Daffer, W. H., Drouin, B. J., Froidevaux, L., Fuller, R. A., Jarnot, R. F., Knosp, B. W., Perun, V. S., Snyder, W. V., Stek, P. C., Thurstans, R. P., Wagner, P. A., Waters, J. W., Connor, B., Urban, J., Murtagh, D., Ricaud, P., Barret, B., Kleinböhl, A., Kuttippurath, J., Küllmann, H., von Hobe, M., Toon, G. C., and Stachnik, R. A.: Validation of the Aura Microwave Limb Sounder ClO measurements, *J. Geophys. Res.-Atmos.*, 113, D15S22, <https://doi.org/10.1029/2007JD008762>, 2008a.
- Santee, M. L., MacKenzie, I. A., Manney, G. L., Chipperfield, M. P., Bernath, P. F., Walker, K. A., Boone, C. D., Froidevaux, L., Livesey, N. J., and Waters, J. W.: A study of stratospheric chlorine partitioning based on new satellite measurements and modeling, *J. Geophys. Res.-Atmos.*, 113, D12307, <https://doi.org/10.1029/2007JD009057>, 2008b.
- Santee, M. L., Manney, G. L., Livesey, N. J., Froidevaux, L., Schwartz, M. J., and Read, W. G.: Trace gas evolution in the lowermost stratosphere from Aura Microwave Limb Sounder measurements, *J. Geophys. Res.-Atmos.*, 116, D18306, <https://doi.org/10.1029/2011JD015590>, 2011.
- Santee, M. L., Livesey, N. J., Manney, G. L., Lambert, A., and Read, W. G.: Methyl chloride from the Aura Microwave Limb Sounder: First global climatology and assessment of variability in the upper troposphere and stratosphere, *J. Geophys. Res.-Atmos.*, 118, 13532–13560, <https://doi.org/10.1002/2013JD020235>, 2013.
- Santee, M., Livesey, N., and Read, W.: MLS/Aura Level 2 Methyl Chloride (CH<sub>3</sub>Cl) Mixing Ratio V004, <https://doi.org/10.5067/Aura/MLS/DATA2002>, 2015.
- Santee, M., Livesey, N., and Read, W.: MLS/Aura Level 2 Chlorine Monoxide (ClO) Mixing Ratio V004, <https://doi.org/10.5067/Aura/MLS/DATA2004>, 2015b.
- Santee, M. L., Manney, G. L., Livesey, N. J., Schwartz, M. J., Neu, J. L., and Read, W. G.: A comprehensive overview of the climatological composition of the Asian summer monsoon anticyclone based on 10 years of Aura Microwave Limb Sounder measurements, *J. Geophys. Res.-Atmos.*, 122, 5491–5514, <https://doi.org/10.1002/2016JD026408>, 2017.
- Schwartz, M., Froidevaux, L., Livesey, N., and Read, W.: MLS/Aura Level 2 Ozone (O<sub>3</sub>) Mixing Ratio V004, <https://doi.org/10.5067/AURA/MLS/DATA2017>, 2015.
- Sheese, P. E., Walker, K. A., Boone, C. D., McLinden, C. A., Bernath, P. F., Bourassa, A. E., Burrows, J. P., Degenstein, D. A., Funke, B., Fussen, D., Manney, G. L., McElroy, C. T., Murtagh, D., Randall, C. E., Raspollini, P., Rozanov, A., Russell III, J. M., Suzuki, M., Shiotani, M., Urban, J., Clarmann, T. V., and Zawodny, J. M.: Validation of ACE-FTS version 3.5 NO<sub>y</sub> species profiles using correlative satellite measurements, *Atmos. Meas. Tech.*, 9, 5781–5810, <https://doi.org/10.5194/amt-9-5781-2016>, 2016.
- Singleton, C. S., Randall, C. E., Chipperfield, M. P., Davies, S., Feng, W., Bevilacqua, R. M., Hoppel, K. W., Fromm, M. D., Manney, G. L., and Harvey, V. L.: 2002–2003 Arctic ozone loss deduced from POAM III satellite observations and the SLIMCAT chemical transport model, *Atmos. Chem. Phys.*, 5, 597–609, <https://doi.org/10.5194/acp-5-597-2005>, 2005.
- Solomon, S.: Stratospheric ozone depletion: A review of concepts and history, *Rev. Geophys.*, 37, 275–316, <https://doi.org/10.1029/1999RG900008>, 1999.
- Stiller, G. P. (Ed.): The Karlsruhe Optimized and Precise Radiative transfer Algorithm (KOPRA), Vol. FZKA 6487 of Wissenschaftliche Berichte, Forschungszentrum Karlsruhe, 2000.
- Tikhonov, A. N. and Arsenin, V. I.: Solutions of ill-posed problems, Scripta series in mathematics, Winston and Distributed solely by Halsted Press, Washington and New York, 1977.
- Tritscher, I., Grooß, J.-U., Spang, R., Pitts, M. C., Poole, L. R., Müller, R., and Riese, M.: Lagrangian simulation of ice particles and resulting dehydration in the polar winter stratosphere, *Atmos. Chem. Phys.*, 19, 543–563, <https://doi.org/10.5194/acp-19-543-2019>, 2019.
- Ungermann, J., Blank, J., Dick, M., Ebersoldt, A., Friedl-Vallon, F., Giez, A., Guggenmoser, T., Höpfner, M., Jurkat, T., Kaufmann, M., Kaufmann, S., Kleinert, A., Krämer, M., Latzko, T.,

- Oelhaf, H., Olchewski, F., Preusse, P., Rolf, C., Schillings, J., Suminska-Ebersoldt, O., Tan, V., Thomas, N., Voigt, C., Zahn, A., Zöger, M., and Riese, M.: Level 2 processing for the imaging Fourier transform spectrometer GLORIA: Derivation and validation of temperature and trace gas volume mixing ratios from calibrated dynamics mode spectra, *Atmos. Meas. Tech.*, 8, 2473–2489, <https://doi.org/10.5194/amt-8-2473-2015>, 2015.
- Urban, J., Lautié, N., Le Flochmoën, E., Jiménez, C., Eriksson, P., La Noë, J. D., Dupuy, E., Ekström, M., Amraoui, L. E., Frisk, U., Murtagh, D., Olberg, M., and Ricaud, P.: Odin/SMR limb observations of stratospheric trace gases: Level 2 processing of ClO, N<sub>2</sub>O, HNO<sub>3</sub>, and O<sub>3</sub>, *J. Geophys. Res.-Atmos.*, 110, D14307, <https://doi.org/10.1029/2004JD005741>, 2005.
- van den Broek, M. M. P., Williams, J. E., and Bregman, A.: Implementing growth and sedimentation of NAT particles in a global Eulerian model, *Atmos. Chem. Phys.*, 4, 1869–1883, <https://doi.org/10.5194/acp-4-1869-2004>, 2004.
- Voigt, C., Dörnbrack, A., Wirth, M., Groß, S. M., Pitts, M. C., Poole, L. R., Baumann, R., Ehard, B., Sinnhuber, B.-M., Woitode, W., and Oelhaf, H.: Widespread polar stratospheric ice clouds in the 2015–2016 Arctic winter – implications for ice nucleation, *Atmos. Chem. Phys.*, 18, 15623–15641, <https://doi.org/10.5194/acp-18-15623-2018>, 2018.
- von Clarmann, T.: Chlorine in the Stratosphere, *Atmósfera*, 26, 415–458, [https://doi.org/10.1016/S0187-6236\(13\)71086-5](https://doi.org/10.1016/S0187-6236(13)71086-5), 2013.
- von Clarmann, T., Linden, A., Oelhaf, H., Fischer, H., Friedl-Vallon, F., Piesch, C., Seefeldner, M., Völker, W., Bauer, R., Engel, A., and Schmidt, U.: Determination of the stratospheric organic chlorine budget in the spring arctic vortex from MIPAS B limb emission spectra and air sampling experiments, *J. Geophys. Res.-Atmos.*, 100, 13979–13997, <https://doi.org/10.1029/95JD01048>, 1995.
- von Hobe, M., Bekki, S., Borrmann, S., Cairo, F., D’Amato, F., Di Donfrancesco, G., Dörnbrack, A., Ebersoldt, A., Ebert, M., Emde, C., Engel, I., Ern, M., Frey, W., Genco, S., Griessbach, S., Grob, J.-U., Gulde, T., Günther, G., Hösen, E., Hoffmann, L., Homonnai, V., Hoyle, C. R., Isaksen, I. S. A., Jackson, D. R., Jánosi, I. M., Jones, R. L., Kandler, K., Kalicinsky, C., Keil, A., Khaykin, S. M., Khosrawi, F., Kivi, R., Kuttippurath, J., Laube, J. C., Lefèvre, F., Lehmann, R., Ludmann, S., Luo, B. P., Marchand, M., Meyer, J., Mitev, V., Molleker, S., Müller, R., Oelhaf, H., Olschewski, F., Orsolini, Y., Peter, T., Pfeilsticker, K., Piesch, C., Pitts, M. C., Poole, L. R., Pope, F. D., Ravagnani, F., Rex, M., Riese, M., Röckmann, T., Rognerud, B., Roiger, A., Rolf, C., Santee, M. L., Scheibe, M., Schiller, C., Schlager, H., Siciliani de Cumis, M., Sitnikov, N., Søvde, O. A., Spang, R., Spelten, N., Stordal, F., Sumiřiska-Ebersoldt, O., Ulanovski, A., Ungermann, J., Viciani, S., Volk, C. M., vom Scheidt, M., von der Gathen, P., Walker, K., Wegner, T., Weigel, R., Weinbruch, S., Wetzel, G., Wienhold, F. G., Wohltmann, I., Woitode, W., Young, I. A. K., Yushkov, V., Zobrist, B., and Stroh, F.: Reconciliation of essential process parameters for an enhanced predictability of Arctic stratospheric ozone loss and its climate interactions (REC-ONCILE): activities and results, *Atmos. Chem. Phys.*, 13, 9233–9268, <https://doi.org/10.5194/acp-13-9233-2013>, 2013.
- Waibel, A. E., Peter, T., Carslaw, K. S., Oelhaf, H., Wetzel, G., Crutzen, P. J., Pöschl, U., Tsias, A., Reimer, E., and Fischer, H.: Arctic Ozone Loss Due to Denitrification, *Science*, 283, 2064–2069, <https://doi.org/10.1126/science.283.5410.2064>, 1999.
- Waters, J. W., Froidevaux, L., Read, W. G., Manney, G. L., Elson, L. S., Flower, D. A., Jarnot, R. F., and Harwood, R. S.: Stratospheric ClO and ozone from the Microwave Limb Sounder on the Upper Atmosphere Research Satellite, *Nature*, 362, 597, <https://doi.org/10.1038/362597a0>, 1993.
- Waters, J. W., Froidevaux, L., Harwood, R. S., Jarnot, R. F., Pickett, H. M., Read, W. G., Siegel, P. H., Cofield, R. E., Filipiak, M. J., Flower, D. A., Holden, J. R., Lau, G. K., Livesey, N. J., Manney, G. L., Pumphrey, H. C., Santee, M. L., Wu, D. L., Cuddy, D. T., Lay, R. R., Loo, M. S., Perun, V. S., Schwartz, M. J., Stek, P. C., Thurstans, R. P., Boyles, M. A., Chandra, K. M., Chavez, M. C., Chen, G.-S., Chudasama, B. V., Dodge, R., Fuller, R. A., Girard, M. A., Jiang, J. H., Jiang, Y., Knosp, B. W., LaBelle, R. C., Lam, J. C., Lee, K. A., Miller, D., Oswald, J. E., Patel, N. C., Pukala, D. M., Quintero, O., Scaff, D. M., van Snyder, W., Tope, M. C., Wagner, P. A., and Walch, M. J.: The Earth Observing System Microwave Limb Sounder (EOS MLS) on the Aura Satellite, *IEEE Trans. Geosci. Remote Sens.*, 44, 1075–1092, <https://doi.org/10.1109/TGRS.2006.873771>, 2006.
- Wetzel, G., Oelhaf, H., Kirner, O., Friedl-Vallon, F., Ruhnke, R., Ebersoldt, A., Kleinert, A., Maucher, G., Nordmeyer, H., and Orphal, J.: Diurnal variations of reactive chlorine and nitrogen oxides observed by MIPAS-B inside the January 2010 Arctic vortex, *Atmos. Chem. Phys.*, 12, 6581–6592, <https://doi.org/10.5194/acp-12-6581-2012>, 2012.
- Wetzel, G., Oelhaf, H., Birk, M., Lange, A. d., Engel, A., Friedl-Vallon, F., Kirner, O., Kleinert, A., Maucher, G., Nordmeyer, H., Orphal, J., Ruhnke, R., Sinnhuber, B.-M., and Vogt, P.: Partitioning and budget of inorganic and organic chlorine species observed by MIPAS-B and TELIS in the Arctic in March 2011, *Atmos. Chem. Phys.*, 15, 8065–8076, <https://doi.org/10.5194/acp-15-8065-2015>, 2015.
- Winker, D. M., Vaughan, M. A., Omar, A., Hu, Y., Powell, K. A., Liu, Z., Hunt, W. H., and Young, S. A.: Overview of the CALIPSO Mission and CALIOP Data Processing Algorithms, *J. Atmos. Ocean. Technol.*, 26, 2310–2323, <https://doi.org/10.1175/2009JTECHA1281.1>, 2009.
- WMO, ed.: Scientific Assessment of Ozone Depletion: 2006: report of the Montreal Protocol Scientific Assessment Panel, World Meteorological Organization, Geneva, available at: [https://library.wmo.int/pmb\\_ged/gormp\\_50\\_en.pdf](https://library.wmo.int/pmb_ged/gormp_50_en.pdf) (last access: 11 June 2019), 2007.
- WMO (Ed.): Scientific assessment of Ozone depletion: 2014. Pursuant to Article 6 of the Montreal Protocol on substances that deplete the ozone layer, Vol. 55 of Report/World Meteorological Organization, Global Ozone Research and Monitoring Project, World Meteorological Organization, Geneva, available at: [http://www.wmo.int/pages/prog/arep/gaw/ozone\\_2014/documents/Full\\_report\\_2014\\_Ozone\\_Assessment.pdf](http://www.wmo.int/pages/prog/arep/gaw/ozone_2014/documents/Full_report_2014_Ozone_Assessment.pdf) (last access: 11 June 2019), 2015.
- Woitode, W., Dörnbrack, A., Bramberger, M., Friedl-Vallon, F., Haenel, F., Höpfner, M., Johansson, S., Kretschmer, E., Krisch, I., Latzko, T., Oelhaf, H., Orphal, J., Preusse, P., Sinnhuber, B.-M., and Ungermann, J.: Mesoscale fine structure of a tropopause fold over mountains, *Atmos. Chem. Phys.*, 18, 15643–15667, <https://doi.org/10.5194/acp-18-15643-2018>, 2018.



- Wolff, M. A., Kerzenmacher, T., Strong, K., Walker, K. A., Toohey, M., Dupuy, E., Bernath, P. F., Boone, C. D., Brohede, S., Catoire, V., von Clarmann, T., Coffey, M., Daffer, W. H., Mazière, M. D., Duchatelet, P., Glatthor, N., Griffith, D. W. T., Hannigan, J., Hase, F., Höpfner, M., Huret, N., Jones, N., Jucks, K., Kagawa, A., Kasai, Y., Kramer, I., Küllmann, H., Kuttippurath, J., Mahieu, E., Manney, G., McElroy, C. T., McLinden, C., Mébarki, Y., Mikuteit, S., Murtagh, D., Piccolo, C., Raspollini, P., Ridolfi, M., Ruhnke, R., Santee, M., Senten, C., Smale, D., Tétard, C., Urban, J., and Wood, S.: Validation of  $\text{HNO}_3$ ,  $\text{ClONO}_2$ , and  $\text{N}_2\text{O}_5$  from the Atmospheric Chemistry Experiment Fourier Transform Spectrometer (ACE-FTS), *Atmos. Chem. Phys.*, 8, 3529–3562, <https://doi.org/10.5194/acp-8-3529-2008>, 2008.
- Zander, R., Rinsland, C. P., Farmer, C. B., Brown, L. R., and Norton, R. H.: Observation of several chlorine nitrate ( $\text{ClONO}_2$ ) bands in stratospheric infrared spectra, *Geophys. Res. Lett.*, 13, 757–760, <https://doi.org/10.1029/GL013i008p00757>, 1986.