

Manuscript Number: HE-D-19-05898R1

Title: Technical Potential of Salt Caverns for Hydrogen Storage in Europe

Article Type: Full Length Article

Section/Category: Hydrides / Hydrogen Storage

Keywords: Salt caverns; salt structures; technical storage potential;
hydrogen storage.

Corresponding Author: Ms. Dilara Gulcin Caglayan,

Corresponding Author's Institution: Institute of Energy and Climate
Research - Electrochemical Process Engineering (IEK-3) Forschungszentrum
Juelich GmbH

First Author: Dilara Gulcin Caglayan

Order of Authors: Dilara Gulcin Caglayan; Nikolaus Weber; Heidi
Heinrichs; Jochen Linssen; Martin Robinus; Peter A Kukla; Detlef Stolten

Abstract: The role of hydrogen in a future energy system with a high share of variable renewable energy sources (VRES) is regarded as crucial in order to balance fluctuations in electricity generation. These fluctuations can be compensated for by flexibility measures such as the expansion of transmission, flexible generation, larger back-up capacity and storage. Salt cavern storage is the most promising technology due to its large storage capacity, followed by pumped hydro storage. For the underground storage of chemical energy carriers such as hydrogen, salt caverns offer the most promising option owing to their low investment cost, high sealing potential and low cushion gas requirement. This paper provides a suitability assessment of European subsurface salt structures in terms of size, land eligibility and storage capacity. Two distinct cavern volumes of 500,000 m³ and 750,000 m³ are considered, with preference being given for salt caverns over bedded salt deposits and salt domes. The storage capacities of individual caverns are estimated on the basis of thermodynamic considerations based on site-specific data. The results are analyzed using three different scenarios: onshore and offshore salt caverns, only onshore salt caverns and only onshore caverns within 50 km of the shore. The overall technical storage potential across Europe is estimated at 84.8 PWhH₂, 27% of which constitutes only onshore locations. Furthermore, this capacity decreases to 7.3 PWhH₂ with a limitation of 50 km distance from shore. In all cases, Germany has the highest technical storage potential, with a value of 9.4 PWhH₂, located onshore only in salt domes in the north of the country. Moreover, Norway has 7.5 PWhH₂ of storage potential for offshore caverns, which are all located in the subsurface of the North Sea Basin.

Technical Potential of Salt Caverns for Hydrogen Storage in Europe

Dilara Gulcin Caglayan,^{1,2} Nikolaus Weber,^{1,3} Heidi Heinrichs,¹ Jochen Linßen,¹ Martin Robinius,¹ Peter A. Kukla³ and Detlef Stolten^{1,2}

1 Institute of Energy and Climate Research - Electrochemical Process Engineering (IEK-3)
Forschungszentrum Juelich GmbH, 52425 Juelich, Germany

2 RWTH Aachen University, Chair for Fuel Cells, Faculty of Mechanical Engineering,
Kackertstraße 9, D-52072 Aachen, Germany

3 Geological Institute, Energy and Mineral Resources, RWTH Aachen University, 52056
Aachen, Germany

d.caglayan@fz-juelich.de, nikolaus.weber@deep-kbb.de, h.heinrichs@fz-juelich.de,
j.linssen@fz-juelich.de, m.robinius@fz-juelich.de, peter.kukla@emr.rwth-aachen.de,
d.stolten@fz-juelich.de

ABSTRACT

The role of hydrogen in a future energy system with a high share of variable renewable energy sources (VRES) is regarded as crucial in order to balance fluctuations in electricity generation. These fluctuations can be compensated for by flexibility measures such as the expansion of transmission, flexible generation, larger back-up capacity and storage. Salt cavern storage is the most promising technology due to its large storage capacity, followed by pumped hydro storage. For the underground storage of chemical energy carriers such as hydrogen, salt caverns offer the most promising option owing to their low investment cost, high sealing potential and low cushion gas requirement. This paper provides a suitability assessment of European subsurface salt structures in terms of size, land eligibility and storage capacity. Two distinct cavern volumes of 500,000 m³ and 750,000 m³ are considered, with preference being given for salt caverns over bedded salt deposits and salt domes. The storage capacities of individual caverns are estimated on the basis of thermodynamic considerations based on site-specific data. The results are analyzed using three different scenarios: onshore and offshore salt caverns, only onshore salt caverns and only onshore caverns within 50 km of the shore. The overall technical storage potential across Europe is estimated at 84.8 PWh_{H2}, 27% of which constitutes only onshore locations. Furthermore, this capacity decreases to 7.3 PWh_{H2} with a limitation of 50 km distance from shore. In all cases, Germany has the highest technical storage potential, with a value of 9.4 PWh_{H2}, located onshore only in salt domes in the north of the country. Moreover, Norway has 7.5 PWh_{H2} of storage potential for offshore caverns, which are all located in the subsurface of the North Sea Basin.

Keywords: Salt caverns, salt structures, technical storage potential, hydrogen storage.

1 INTRODUCTION

The current increase in the share of variable renewable energy sources (VRES) in the energy mix [1] attests to the significant role of these platforms in the decarbonization of the energy sector. Their intermittency [2–5], however, is an obstacle in the transition towards a high share of VRES in the energy system. Mechanical storage technologies such as pumped hydro storage and compressed air energy storage could in principle compensate for these fluctuations; nevertheless, the low storage density of water and compressed air remains a drawback to large-scale implementation, especially for seasonal storage [6]. Unlike mechanical energy storage, storage using chemical energy carriers such as hydrogen or natural gas provides an approximately 100 times higher energy density than compressed air energy storage for the same storage volume¹ [7]. An alternative energy carrier is hydrogen, which can be produced using the “Power to Gas” concept [8] by means of electrolysis utilizing renewable electricity. In addition to using hydrogen in fuel cell electric vehicles (FCEVs), it can also be fed into fuel cells to generate electricity to compensate for low generation periods (“Power to Power”). Underground formations (e.g., depleted gas fields, aquifers, salt caverns, etc.), pipelines or vessels can be considered viable storage options for the seasonal storage of hydrogen [9]. Pellow et al. [10] state that for seasonal storage, underground salt caverns are more favorable than above-ground storage technologies, such as pipeline storage or vessels.

Natural gas storage in underground cavities has been practiced for decades. The knowledge gained by this can be easily transferred to the case of hydrogen storage due to the similarities in cavern design, construction and operation [11]. Materials in access wells, cavern head and transmission infrastructure are the main differences between hydrogen and natural gas storage [11,12]. In the case of hydrogen, embrittlement due to long-term diffusion can cause leakage and failures, especially in the steel components [13]. The storage of hydrogen in depleted oil and gas reservoirs has the advantage of reducing the geological exploration efforts resulting from the former use of such sites for oil and gas production. However, the cushion gas requirement for depleted oil and gas field to prevent reservoir rock breakdown is approximately 50% [14]. As a result of the contamination caused by the previous hydrocarbon extraction, contamination control and gas upgrade units for purification may be required. In deep seated aquifers, stored gas can be contaminated by sulfate, reducing bacteria [15]. Cushion gas requirements for aquifers may exceed those necessary for depleted oil and gas reservoirs; moreover, gas leakage is inevitable.

Salt caverns are currently considered to offer the most promising underground storage option owing to their low cushion gas requirement, the large sealing capacity of rock salt and the inert nature of salt structures, preventing the contamination of the stored hydrogen [14,16–18]. Moreover, flexible operation with high injection rates and withdrawal cycles are considered another advantage of salt cavern storage options [19].

Currently, only a few sites for hydrogen storage in salt caverns exist in the United Kingdom (e.g., Teesside) and the United States (e.g., Clemens Dome, Spindletop, Moss Bluff) [13,20].

¹ When 280 kWh m⁻³ is assumed as the energy density of hydrogen stored in salt caverns.

Hydrogen storage in elliptically-shaped salt caverns at a depth of 350-450 m and with a total volume of 210,000 m³ has been operation in Teeside since the 1970s [20]. The salt caverns at Clemens Dome and Moss Bluff are built in salt domes at a depth of 800 m (top of the cavern), with volumes of approximately 580,000 m³ [20]. Clemens Dome and Moss Bluff have operated since 1983 and 2007, respectively [20]. These projects have unequivocally demonstrated for decades that underground hydrogen storage is a technically-feasible option.

Tarkowski [21] has investigated the potential for hydrogen storage in underground formations, including salt caverns, depleted oil and natural gas reservoirs in Poland, with a focus on providing suitable storage locations but not estimating the storage potential. A further analysis by Tarkowski and Czapowski [22] focuses on potential sites for hydrogen storage in salt domes in the country. As a result of this evaluation, 7 of 27 analyzed salt domes were found to be favorable. The use of salt caverns for hydrogen storage was also investigated by Iordache et al. [23] in a scenario for Romania. Despite discussing 4 specific cavern sites, precise storage potential values are not mentioned. Michalski et al. [24] analyzed the role of hydrogen production by means of electrolyzers and the underground storage of hydrogen, with a focus on Germany. For this analysis, the data of existing natural gas and liquid product storage facilities were examined [24]. Estimated hydrogen storage capacity in three regions (northern North-Rhine Westphalia, northwestern Germany and central Germany) is 26.5 TWh_{H2} in total [24]. In the HyUnder study [25], a case study for 5 European countries proposes the total number of caverns required for 2050, of which 74, 43, 24, 21 and 1 are located in Germany, the Netherlands, Spain, the United Kingdom and Romania respectively. Assessments are performed by assuming a standard cavern with a volume of 500,000 m³, corresponding to a storage capacity of 133 GWh_{H2}.

A study on the potential energy storage capacity of compressed air in the Cheshire Basin, located in the United Kingdom, suggested approximately 1,600 caverns be placed in the basin with a depth range of 500-1500 m [26]. A cavern height of 100 m was determined for the analysis in order to be consistent with one of the only two existing compressed air energy storage facilities worldwide, located in Huntorf, Germany [26].

The studies cited above mainly focus on potential cavern sites at a national or subnational level and lack a technical storage potential analysis, which is the main focus of this study. As the major role of hydrogen in the low-carbon economy is clearly emphasized by Staffel et al. [27], an evaluation of European salt basins is necessary in accordance with the hydrogen storage suitability criteria. Therefore, the main purpose of this study is to provide a broad analysis of the technical potential of salt caverns for hydrogen storage so that it can be used by stakeholders and scientists to develop future energy system designs on the basis of these results. Moreover, consideration of the geospatial availability of suitable salt structures such as salt domes, salt pillows and salt walls is given by applying a land eligibility analysis, which incorporates restricted locations such as settlements or protected areas to be excluded for cavern construction. The storage capacity of individual caverns, which are distributed over eligible areas, is estimated

in accordance with thermodynamic considerations and site-specific parameters. The results of this analysis are anticipated to be of use to a variety of stakeholders in future energy system policies and designs. The new approach taken in this work derives from a thorough analysis of the storage potential across Europe by defining suitable cavern sites, which are determined by a land eligibility assessment. Moreover, as the caverns are located in different geological basins, the thermodynamic properties of these are taken into account for estimating the storage capacity. For the analysis, onshore and offshore salt caverns were investigated, whilst the main focus lies on onshore locations. It is intended that the outcomes of this study (such as changing the compressibility factor, which is used in the estimation of the storage capacity of individual caverns) can be utilized by the energy industries and governments in Europe for designing the energy system to incorporate different products in their specific regions. With the fully transparent methodology used in this analysis, the technical storage potential of different chemical species such as natural gas or biogas can also be derived. Nevertheless, it must be noted that the suitability of salt formations must be taken into account for such an assessment. Finally, the results of this work can be used to identify locations that can supply brine, which is extracted during cavern leaching.

The methodology involves the estimation of the usable area of salt structures, designs and the placement of individual caverns and calculation of the storage potential, and is described in Section 2. Suitable salt structures for hydrogen storage, the results of land availability with regard to these and national storage potentials for three different cases are presented in Section 3. Finally, the main findings and suggestions are addressed in Section 4.

2 METHODOLOGY

In order to provide an insight on the approach, overall methodology applied in this work is shown in Figure 1. As it is seen from in the figure, determining the technical potential for salt cavern development requires an analysis of the geology of salt formations and a decision in which salt formation type caverns can be preferentially developed [13]. Therefore, identification of salt formations and their evaluation regarding the suitability for hydrogen storage are the first steps in the assessment. Following this, available areas in suitable salt formations where potential salt caverns can be constructed must be determined, which can be conducted by the methodology explained in Section 2.1. By using two different cavern designs for bedded salt deposits and salt domes, a distribution analysis of these caverns is performed across eligible areas. Then, the technical potential of salt caverns for hydrogen storage is estimated by using these locations and calculating their storage potential under thermodynamic considerations.

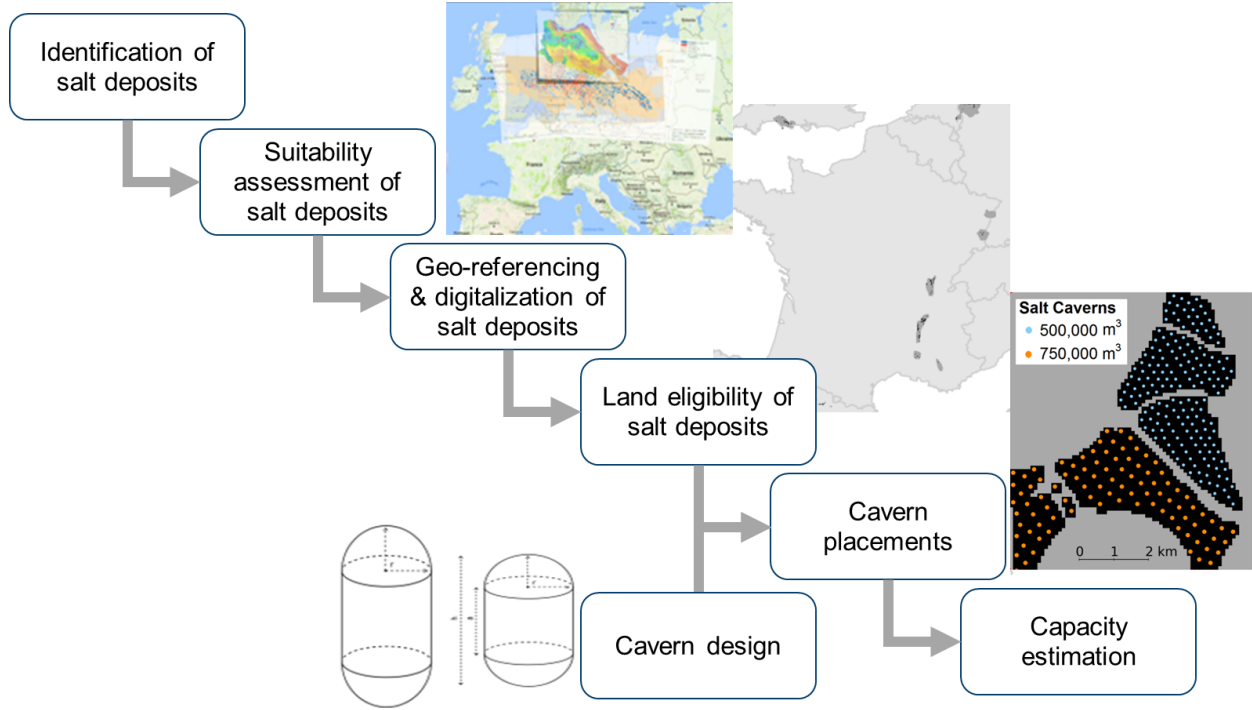


Figure 1. The methodology applied in the derivation of technical potential of salt caverns.

Figure 2 shows the “Concept of Potential”, including different types of technical and non-technical potentials, as laid out by Lütkehus et al. [28]. Within the context of this work, the “Theoretical Potential” includes the total hydrogen storage capacity of all possible salt caverns, whilst the “Technical Potential” takes the limitations (i.e., cushion gas) into account. “Economic” and “Ecological Potentials” consider corresponding criteria that might be derived from given scenarios. Finally, the “Realizable Potential” is the combination of technical, ecological and economic criteria with additional considerations (i.e., social acceptance). It must be noted that the potential values derived in this work cannot be fully utilized on account of additional limitations imposed by various environmental, economic, and social acceptance concerns. Moreover, the extent to which hydrogen salt caverns should be deployed can be determined in conjunction with the energy system design.

In other words, “technical potential” in this work refers to the maximum storage potential that could be utilized before the aforementioned ecological and social limitations are considered. Therefore, the presented results can be used as a basis for other analyses where further aspects could be taken into account such as water management for cavern construction, local hydrogen demand or proximity to hydrogen production sites. In this way, the most promising cavern sites can be identified and realized among all the locations presented in this work, which in a final step should then be checked against social and ecological concerns.

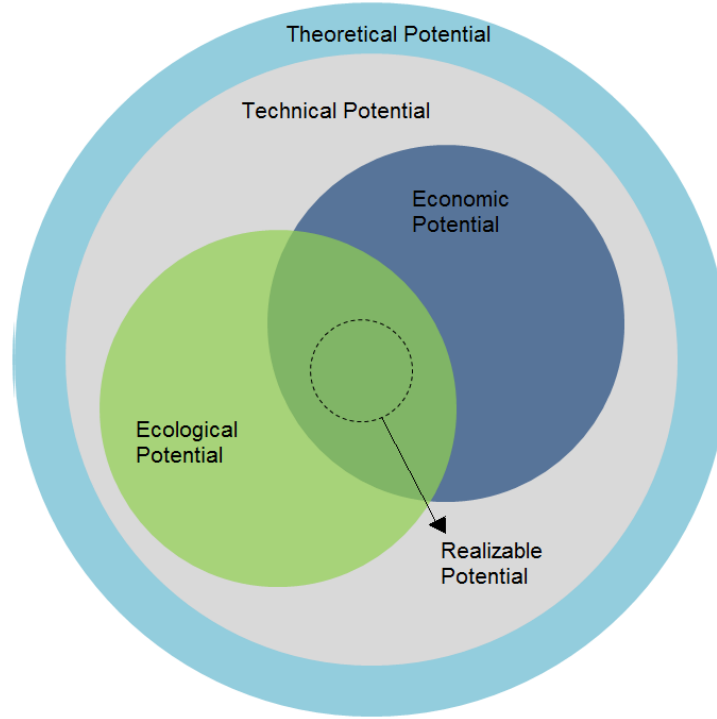


Figure 2. “Concept of potential” with different potential types, adapted from Lütkehus [28].

2.1 Land eligibility

A single salt cavern is located 2,000 m below ground and affects an area of 13 km² on the surface². The caverns can be affected by convergence phenomena because of the inherent mobility of salts. Although this is a very safe and mature industry, problems can include unexpected structures and deviations from the designed cavern shape, cavern and gallery convergence, as well as ground subsidence, high pressure brine and gas pockets, borehole closure, cementing problems, casing collapse and cavern abandonment, in addition to engineering issues not directly related to salt. In rare cases, roof loss and cavern collapse has occurred [29,30] and therefore cavern migration, microseismicity [31], land subsidence [32] and long-term subsidence predictions [33] are common issues in solution mining. This places constraints on the safe and sustainable design of solution mining salt cavern development, as shown by Lux [34]. Consequently, areas with eligible salt deposits have been investigated in order to determine their potential for salt cavern development. For this purpose, an open source model, Geospatial Land Availability for Energy Systems (GLAES), developed by Ryberg et al. [35], is employed as the tool for land availability analyses. By using GLAES, exclusion constraints have been applied to the areas that contain subsurface salt deposits. A resolution of 100 m is used for the eligibility assessment, as it is the lowest resolution in the data used for the analysis (Prior Datasets). The exclusion constraints are shown in Table 1. These have been

² Determined by taking an angle of approximately 45° between the bottom of the cavern and the upward direction

applied with the buffer distances defined based on a literature analysis for underground storage and compressed air energy storage. A common exclusion algorithm is applied to each salt structure, which begins with a two-dimensional overlay of the structure's boundary onto a geospatial reference frame (bird's eye view). All areas within the salt structure's boundaries are initially considered to be 'included', although after each application of the constraints of Table 1, the amount of available area decreases. For example, the first constraint, "Urban Areas", will exclude up to 2,500 m (buffer distance) around the edge of all urban settlements zones. Once all exclusion constraints have been applied the areas which remain as eligible will be considered eligible areas for placement of potential salt caverns.

Table 1. Constraints used in the land eligibility analysis for salt cavern construction.

Criteria	Excludes		Source
Urban areas	below	2,500 m	[35]
Rural areas	below	2,000 m	[35]
Major fault zones	below	200 m	[36]
Natural protected areas, water bodies	below	200 m	[35]
Railway, major roads and gas pipelines	below	200 m	[35,37]
Geological correction factor (distance from the salt edge):			
- Bedded salt	below	2,000 m	Own data
- Salt domes		500 m	

A detailed geometric outline of a subsurface salt deposit is not possible to obtain without extensive geological exploration using geophysical surveys, wells and further geological information. Because of the lack of such information in many areas, a buffer distance of 500 m for salt domes and 2000 m for bedded salt deposits has been applied from the structure or formation edge of each salt deposit to ensure salt cavern construction in theoretically most favorable conditions [2]. This prerequisite ("exclusion" in Table 1) mainly serves as a safety buffer for cavern construction purposes.

2.2 Salt cavern design and placement

Designing a salt cavern highly depends on the properties of the salt deposit to be considered [34]; therefore, there are a number of factors that must be taken into account in order to maintain the sustainable and safe operation of the cavern. Figure 3 illustrates a representation of a salt cavern with related technical terms and the pressure gradients as a function of depth. In order to ensure the geo-mechanical safety of caverns, thicknesses of salt layers in the hanging wall and foot wall (above and below) the cavern must be defined and considered (Figure 3). The Minimum thickness of these layers for safe operation is expressed as a function of cavern diameter. For example, the minimum thickness of the hanging wall is suggested as 75% of the cavern diameter, whereas this value is 20% of the cavern diameter for the foot wall [38]. Moreover, a minimum

limit for the height-to-diameter ratio for salt caverns is defined as 0.5 for salt caverns in a bedded salt deposit [38].

Ozarslan [11] state that capsule-shaped salt caverns are more stable with decreased stress risk in comparison to caverns with an elliptical or cylindrical shape under 1200 m depth and 270 bar overburden pressure. Therefore, the capsule shape is selected for the calculations of cavern volume, as well as for the determination of the appropriate construction and operation parameters of the caverns. For bedded salt deposits, a cavern volume of 500,000 m³ is applied with a diameter of 84 m and cavern height of 120 m; whereas 750,000 m³ for cavern volume, 58 m diameter and 300 m for height are assumed for caverns in salt domes. For bedded salt deposits, only salt structures with a salt thickness greater than 200 m are assumed to be suitable. Therefore, following the suggested ratios for the hanging wall and foot wall [38], the cavern height is calculated as 120 m. The height limitation is not pronounced in the salt domes due to higher salt thickness; thus, the height indicated by Ozarslan [11] (300 m) is chosen for caverns with 750,000 m³ volume.

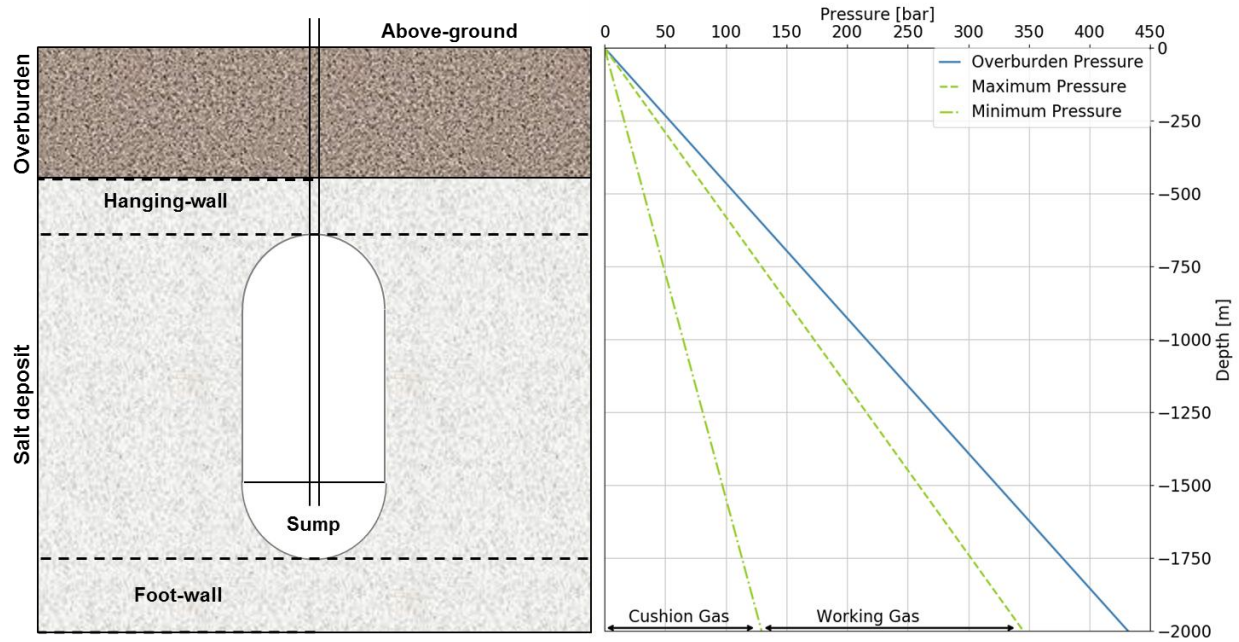


Figure 3. A simplified representation of an exemplary cavern and estimated pressure limits as a function of depth, adapted from Stolzenburg et al. [39] (Calculation of pressure is explained in Section 2.3).

In order to evaluate the technical potential, salt cavern placement has been performed across all eligible areas with a separation distance of 4 times the cavern diameter between the vertical cavern axis (bird's eye view). This corresponds to a separation distance of 232 m for salt domes and 336 m for bedded salt deposits when the aforementioned cavern designs are used.

2.3 Calculation of cavern storage capacity

The average operation temperature of hydrogen within the salt cavern is assumed to match the temperature of the surrounding salt rock. However, temperature in a sedimentary basin varies with respect to the depth; therefore, a gradient of $25\text{ }^{\circ}\text{C km}^{-1}$ is assumed up to approximately 5 km depth [40]. Because of their respective heights, the variation in the temperature results in a difference of $3\text{ }^{\circ}\text{C}$ between the top and bottom of a small cavern and $7.5\text{ }^{\circ}\text{C}$ for a large salt cavern. Therefore, the average temperature of the gas is calculated using Equation 1, assuming a surface temperature of 288 K ($15\text{ }^{\circ}\text{C}$). $T_{average}$ stands for average gas temperature in K^3 , $depth$ in m and $cavernHeight$ for height of the cavern in m, which are 120 m and 300 m for bedded and domal-salt caverns, respectively.

$$T_{average} = 288 + 0.025 * (depth - cavernHeight/2) \quad \text{Equation 1}$$

Salt caverns are exposed to overburden pressure (sometimes referred to as lithostatic pressure). This pressure can be determined by Equation 2, which is a function of rock density (ρ_{rock}) in kg m^{-3} , gravitational acceleration (g , assumed as 9.81 m s^{-2}), $depth$ and $cavern height$ in m. The $depth$, shown in both Equation 1 and Equation 2, refers to the bottom tip of the salt cavern. However, scaled to the center of the cavern by subtracting half of its height in order to estimate the average pressure, which is between the overburden pressures at the top and bottom tips of the cavern.

$$P_{overburden} = \rho_{rock} * g * (depth - cavernHeight) \quad \text{Equation 2}$$

Due to concerns about geotechnical safety, maximum and minimum gas operation pressures are limited, respectively, to 80% and 24% of overburden pressure [11,39]. Exceeding the maximum gas operation pressure may result in salt rock fractures because of the high pressure exerted on the cavern walls [25], while the low pressure limitation is for maintaining gas injection and withdrawal as well as the stability of the cavern [41]. As empirical operating pressure values for hydrogen storage in salt caverns are not accessible, pressure ranges are largely derived from natural gas storage operations [25]. These upper and lower limits for the gas operation pressure are used in the density calculation at the corresponding pressure level, which is shown in Equation 3. The density of the gas (ρ) in kg m^{-3} is calculated using the real gas law, in which compressibility factor (Z), pressure (P) in Pa, molar mass of the species (M) in kg mol^{-1} , universal gas constant (R), which is equal to $8.314\text{ J K}^{-1}\text{ mol}^{-1}$ and temperature (T) in K are used. The compressibility factor is calculated by a Python Module called CoolProp [42].

$$\rho_{H_2} = \frac{P * M}{Z * R * T} \quad \text{Equation 3}$$

³ Conversion of temperature between Kelvin and Celsius is performed with the following equation: $T\text{ (K)} = T\text{ (}^{\circ}\text{C)} + 273.15$.

The minimum and maximum limits for density are used in the calculation of the mass of working gas, shown in Equation 4. $m_{workingGas}$ stands for the mass of working gas in kg, ρ for density in kg m^{-3} , V_{cavern} for cavern volume in m^3 , and finally θ_{safety} for a safety factor, which is assumed to be 70% and accounts for the loss of storage capacity to the sump and brine at the bottom of the cavern, as well as unplanned construction circumstances during the leaching of the cavern. Subscripts of minimum and maximum are calculated at their corresponding pressure limit:

$$m_{workingGas} = (\rho_{H_2, maximum} - \rho_{H_2, minimum}) * V_{cavern} * \theta_{safety} \quad \text{Equation 4}$$

Finally, the storage capacity of a salt cavern is determined by using the lower heating value and mass of working gas calculated through specifications of the cavern and location, which is shown in Equation 5. $cavernCapacity$ is calculated in GWh_{H_2} , while the lower heating value of the gas (LHV) is defined in $\text{GWh}_{H_2} \text{ kg}^{-1}$.

$$cavernCapacity = m_{workingGas} * LHV_{gas} \quad \text{Equation 5}$$

Given the lack of projects using hydrogen-filled caverns, the validation of the methodology for salt cavern capacity uses a dataset compiled from natural gas storage sites already in operation [43]. This dataset contains 94 cavern sites for natural gas storage in salt caverns across Europe. However, when caverns without available information on depth, cavern volume or capacity are excluded, only 40 sites remain. As the composition of natural gas varies and is not reported for each cavern site, an average sample composition of natural gas is assumed to be 94% methane (CH_4), 4% ethane (C_2H_6) and 2% propane (C_3H_8) [44]. The volume and depth of the salt caverns obtained from the dataset are used for storage capacity calculations. A comparison of capacities given in the dataset and calculated by the current approach is shown in Figure 4. In some cases, the dataset involves a range for the depth instead of a single value. Therefore, assuming that all the caverns can be placed either at the upper or lower boundary, it can be said that the actual cavern capacity must be within these minimum and maximum capacity values. For example, in the “Nüttormoor L” facility located in Germany, the depth range is given as 950-1300 m. Therefore, as can be seen in Figure 4, there is a lower and higher estimated storage capacity for that facility. The gray line in the figure indicates a 100% match between the reported and calculated values, while a further point plotted from this gray line means a higher error in the estimation of the capacity. As can be seen from the figure, in general there is good agreement across most of the results. Deviations in the estimations can be caused by several factors, such as different compositions for natural gas, different operating pressure limits, especially for cushion gas and geological conditions altering the temperature and pressure environments. As well as slight deviations from the gray line, there are large differences in the estimated and reported capacities for the two cavern sites (the Etrez site in France and the Nüttormoor L-Gas site in Germany). More detailed data on the two outliers does not exist on the website of the operators; thus, they are assumed to be outliers.

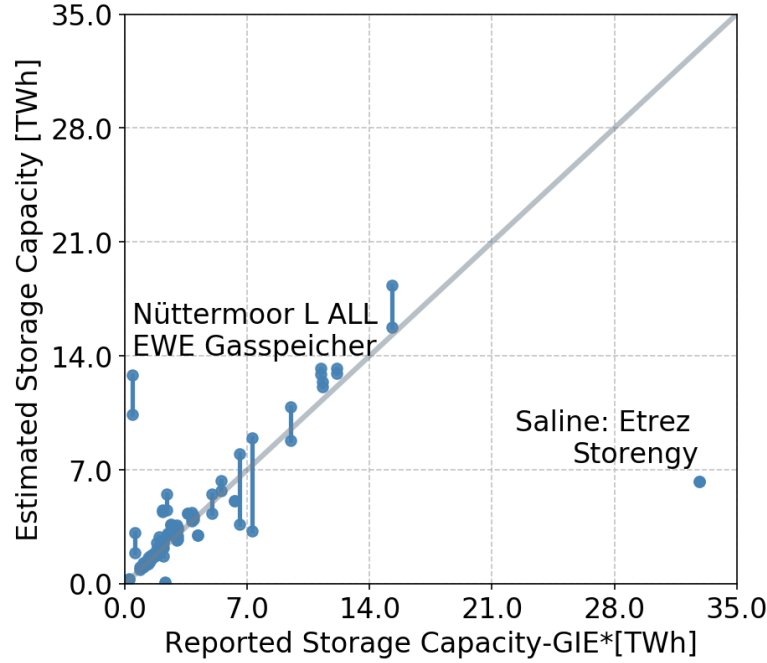


Figure 4. Comparison of reported and estimated storage capacities of natural gas salt caverns, the gray line indicating a 0% error between the actual and estimated values (the reported values are extracted from existing natural gas storage facilities in Europe [43]).

3 RESULTS & DISCUSSION

The results of the analysis, which were obtained through the application of the methodology described in Section 2, will be presented in this section. After an initial suitability assessment on the salt formations in Section 3.1, a geospatial eligibility analysis is performed on the suitable salt formations with uniform constraints in Section 3.2. In the following, the distribution of salt caverns across eligible salt formations is proposed (Section 3.3), to be followed by a final assessment of the storage capacity of each cavern (Section 3.4).

3.1 European Salt Basins Suitable for Underground Hydrogen Storage

As a result of the assessment, suitable salt structures, as well as suitable bedded salt deposits, are shown in Figure 5, with the respective salt basins denoted. The assumption was made that all encountered salt bodies that are not identified as bedded salt deposits were to be classified as salt structures (encompassing salt domes, salt pillows, salt walls, etc.). As a geological suitability assessment would require individual evaluation for a vast number of salt structures distributed all over Europe, the assumption was made that all salt structures were to be suitable for underground hydrogen storage instead of excluding all from the potential analysis from the very beginning. Therefore, the geological suitability assessment is exclusively applied to bedded salt deposits and briefly discussed in the following. Bedded salt deposits that do not fulfill the thickness and chemical requirements for UHS construction, or for which no reliable information concerning geological properties could be found, were dismissed and not considered in the further process of

the potential analysis. A minimum salt thickness of 200 m and a range of minimum to maximum depth of 500 m to 2,000 m were selected as being suitable for salt cavern construction.

Within the framework of this analysis, assumptions of highly idealized salt deposits can be made; however, this does not necessarily correspond to the actual shape and conformity of the salt formations in reality. Bedded salts are assumed to be perfectly layered with equal thickness and equal depth ranges spanning the entire geographical extent of the salt deposit. The geometrical shape of the salt structures were assumed to be positioned upright as cylindrical shaped bodies without any inclination or tectonically-induced modifications of the salt.

Due to the geological formation conditions of the salt structures, which always originate from bedded salt deposits, all regions with a high abundance of salt structures often also correlate with the presence of remnant bedded salt deposits, forming base salt. In these cases, salt structures are favored over bedded salt deposits, due to their higher storage capacity and the unfavorable thickness of the remaining bedded salt deposits for cavern construction.

The Tertiary (Cenozoic) sub-basins (1-4) in France contain thick evaporite sequences reaching up to 1,800 m, with overall low sulfate concentrations in thick salt layers [45]. The thickness of the Mesozoic salt deposits in Northwestern France shows high insoluble content within the salt formation (such as anhydrite/clay interbeds or gypsum), which is in contrast to the aforementioned Tertiary deposits, and which rules out the suitability of these Mesozoic deposits for cavern construction. In Italy, Tertiary salt deposits in the Crotona Basin of Calabria and in Western Sicily are also not suitable due to high insoluble content, as well as the lower thickness of the salt layer [45,46]. In Spain, Mesozoic evaporite deposits cover large areas of the subsurface and extend from the Betic Cordillera over the Iberian Range to the northern coast of Spain, up to the Bay of Biscay; however, top salt exceeds depths of 2,000 m. Tertiary evaporitic formations are present in the Ebro, Duero and Tagus Basin. These halite beds have a considerable thickness, but show highly folded facies and high amounts of anhydrite and gypsum concentration [47]. The Cardona Saline Formation (14) is included in this analysis, as the thickness of salt in some areas is proven to attain approximately 300 m at reasonable depths of below 2,000 m for cavern construction [47].

Major periods of salt deposition in central Europe took place during the Paleozoic (Permian) and Mesozoic eras. The European Permian Basin (EPB) of central Europe belongs to the largest sedimentary paleobasins of the world and contains a considerable amount of bedded salt deposits and diapiric salt structures, reaching from the eastern United Kingdom up to the North Sea, the Netherlands, Denmark and Northern Germany, down to the central basins of Poland [48–54]. At the margin of the EPB, bedded Zechstein salt deposits are thinned out and buried at depths shallower than 2,000 m. These deposits are found on the east coast of the UK (17), western, eastern and central Germany (5-8) and as far south as Upper Silesia in Poland (8-12).

Outside of the EPB, Mesozoic salt, which formed during the early Triassic period, can be found in northwestern England, Northern Ireland and southern Germany. The Cheshire Basin, amongst

other Triassic basins in the UK, shows promise for salt cavern construction, as it fulfills ideal geological prerequisites, such as depth and thickness (16, 18, 19) [49,52].

Amongst the youngest salt deposits in the central and eastern European region are the Badenian Tertiary deposits, reaching from the Carpathian Foredeep in southern Poland to the Transylvanian Basin in Romania. Apart from the Ocnele Mari salt deposit (13), where salt lies at depths of 650 m and can attain a thickness of 500 m, the Tertiary salt deposits do not qualify for cavern construction, as the salt strata is highly folded and imbricated, or is not favored over the presence of salt structures [55,56]. Ukraine and Belarus (15) are excluded from this analysis due to the lack of data for urban and rural areas necessary for the following surface eligibility assessment [57,58].

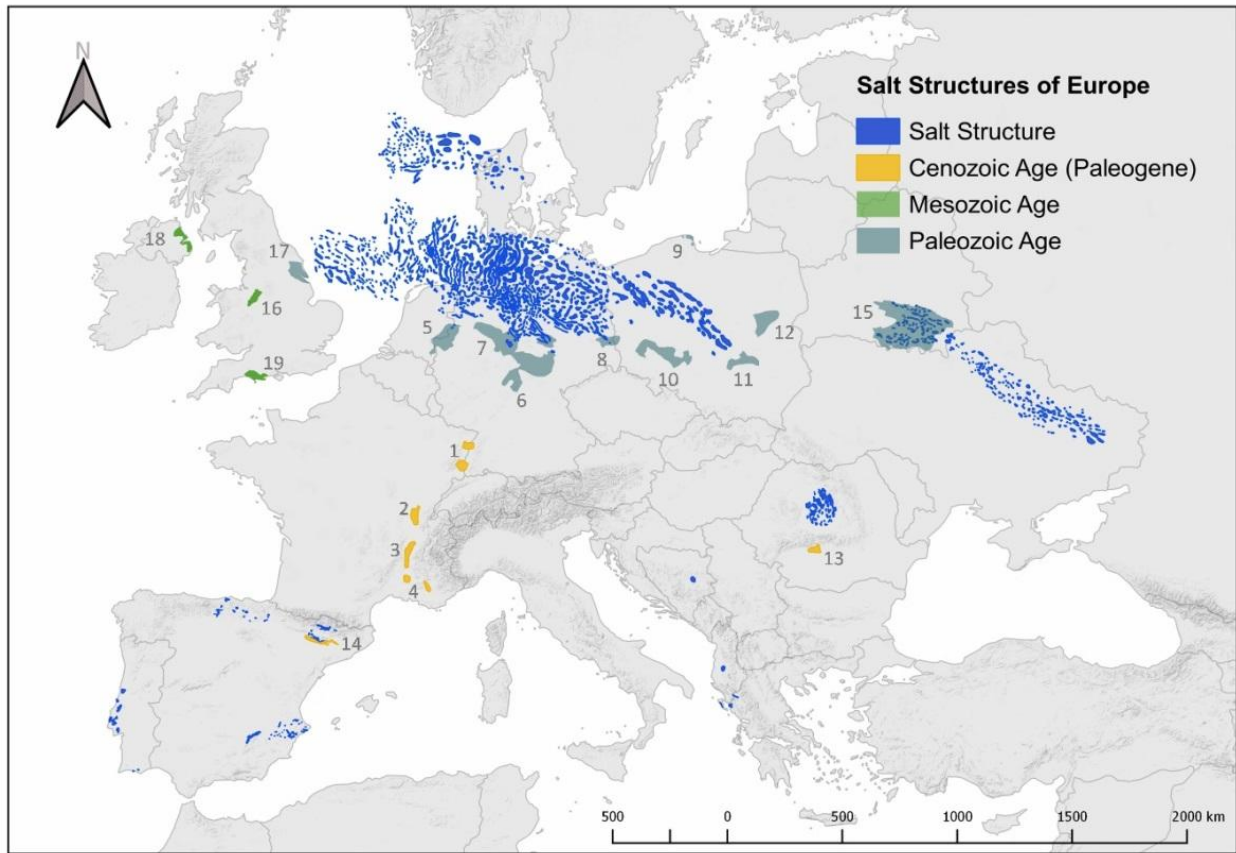


Figure 5. Map of European salt deposits and salt structures as a result of suitability assessment for underground hydrogen storage (1. Alsace Basin; 2. Bresse Basin; 3. Greoux Basin; 4. Valence Basin; 5. Lower Rhine Basin; 6. Hessen Werra Basin; 7. Sub-Hercynian Basin; 8. Lausitz Basin; 9. Leba Salt; 10. Fore-Sudetic Monocline; 11. Carpathian Foredeep; 12. Lublin Trough; 13. Ocnele Mari; 14. Cardona Saline Formation; 15. Pripyat Basin; 16. Cheshire Basin; 17. UK Permian Zechstein Basin; 18. Larne Salt Field; 19. Wessex Basin).⁴

⁴ A detailed list of publications containing geological maps that were used for the visualization and digitization of the layered and domal salt bodies can be found in the appendix. The suitable salt formations were determined by the literature review [45,46,61–66,48–50,54–58].

3.2 Eligibility Assessment and Cavern Placement

The application of the eligibility constraints and item placement algorithm, as shown in Section 2.2 and Section 2.3, produces possible cavern locations. Figure 6 illustrates the results of a land eligibility assessment applied to the salt formations. Additionally, an exemplary representation of a salt cavern distribution field across different types of salt structures is shown for an area in central Germany. This area consists of both salt domes and bedded salt deposits. As part of the methodology, in a case where there is an overlap between salt domes and bedded salt deposits, the overlapping area is processed following the designs for salt domes (large cavern size). The larger and smaller salt caverns represent different volumes of caverns, with 750,000 m³ and 500,000 m³ placed in salt domes and bedded salt deposits, respectively. As mentioned earlier (Section 2.2), the separation distance of smaller and larger caverns are different due to different diameters used in the cavern design. It must be noted that these cavern placements are used in order to calculate the technical potential for hydrogen storage. In other words, these cavern placements correspond to all possible locations where a salt cavern can be built, yet the extent to which these locations should be utilized is not within the scope of this study. Nevertheless, social, economic and environmental concerns are not taken into account here. Therefore, the results of these placements can be further used in the design of energy systems, as well as in analyses taking social acceptance into consideration in the related area.

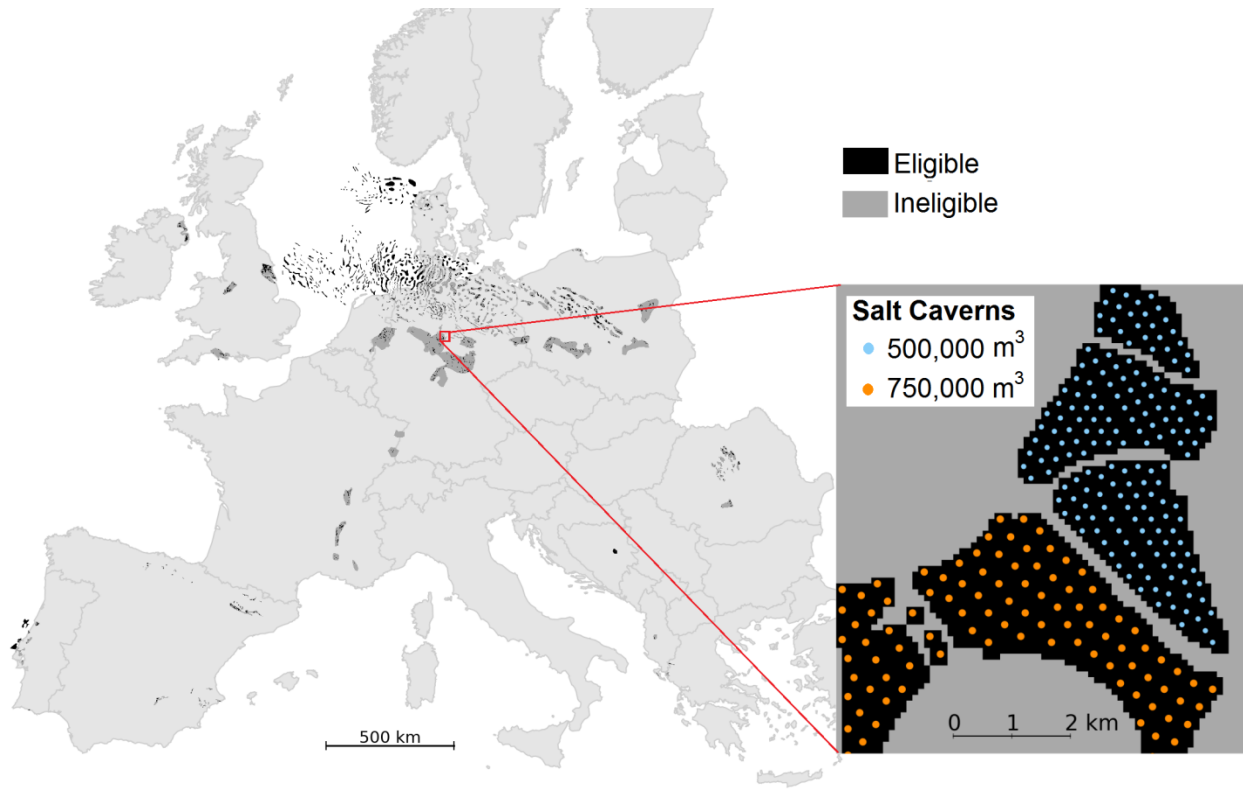


Figure 6. Land eligibility results with an exemplary representation of cavern placement in central Germany (extent of exemplary placement: 51.9°-52.0° N, 10.0°-10.1° E).

3.3 Distribution of Volumetric Energy Density across Europe

By using individual cavern placement depths, the storage capacity of each cavern is calculated on the basis of properties such as cavern volume and temperature (see Section 2.3). However, the direct comparison of storage capacities can be misleading because of two cavern designs having different volumes. Instead, energy density, which is calculated as a cavern's storage potential divided by its volume, is employed for comparison. The energy density distribution of the potential hydrogen salt cavern locations across Europe is shown in Figure 7. The energy density of caverns in salt domes does not vary (whether northern Germany, Portugal or southern Spain, etc.), which is due to the assumption of the same placement depths and cavern design applied to all caverns. Nevertheless, variation in the energy density of salt caverns placed in the bedded salt deposits is evident owing to different depths possessing specific thermodynamic and storage conditions. The energy density of all salt caverns varies between 214 and 458 kWh m⁻³. Examining the distribution of the volumetric energy density, the lowest energy density is estimated in the Cheshire Basin (the United Kingdom) and Ocnele Mari (Romania) due to salt lying in shallow geological environments. The maximum depth in the Cheshire Basin and Ocnele Mari are approximately 700 m and 650 m, respectively; whereas the assumed maximum depth for salt caverns in the domal salt is 1,400 m. Given that the amount of working gas increases as a function of depth, these results are thought to be consistent. When energy density is translated into storage capacity (by multiplying the energy density by the cavern volume), the capacity of salt caverns in domal salt structures is estimated to be nearly 210 GWh_{H2}, whereas it varies between 65 and 160 GWh_{H2} for the caverns placed in bedded salt deposits. As is discussed in Section 2.3, the depth of the salt structure determines the maximum and minimum operating pressures, which are then used in estimating the amount of working gas. Deeper salt structures can accommodate an increase in the amount of working gas (storage capacity), which can also be seen in Figure 3. A deeper look at the energy densities reveals that having a suitable salt formation is not enough to determine the storage potential. In addition to the quantity, in terms of salt caverns placed in eligible and suitable salt areas, the depth of the salt structure, thermodynamic gas storage behavior and cavern design are required to estimate a well-founded storage capacity. As can be seen in the United Kingdom, for example, different characteristics can be observed even on a national scale due to different salt depths and, consequently, different geomechanical and thermodynamic storage conditions.

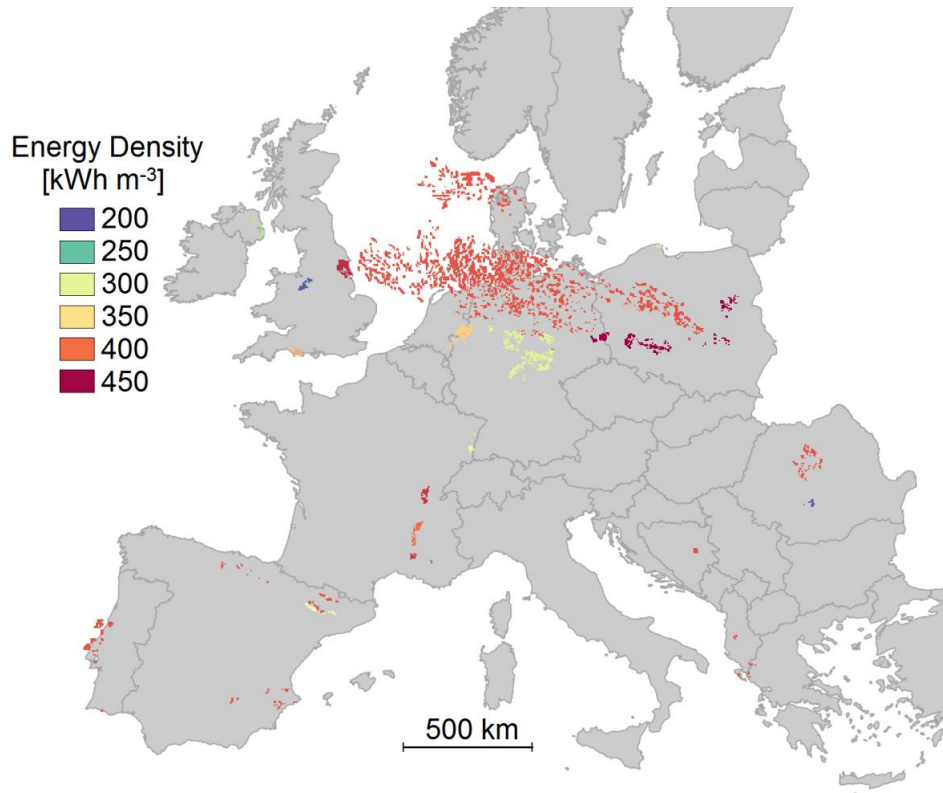


Figure 7. Distribution of potential salt cavern sites across Europe with their corresponding energy densities (cavern storage potential divided by the volume).

3.4 National Storage Potential

Overall national storage capacities are shown in Figure 8, with three classifications: onshore, onshore constrained and offshore. The countries are sorted by their total storage potential. Cavern capacities labeled as “Offshore” stand for caverns placed in salt domes under the North Sea, whereas the “Onshore” ones refer to the remaining caverns located on land (after the application of eligibility constraints). Finally, an additional constraint of 50 km distance from shore has been included in the calculation of the storage potential of onshore salt caverns, and defined as “Constrained”. This constraint is added in order to take into account the economic and environmental constraints regarding brine solution disposal during cavern construction, as disposing of the solution in lakes and rivers is not possible due to its high salt content.

Overall, the storage potential considering offshore and onshore salt caverns constitutes 84.8 PWh_{H2}, 42% of which belongs to Germany. This is followed by the Netherlands and the United Kingdom, with 10.4 and 9.0 PWh_{H2}, respectively. Most of the countries have both onshore and offshore salt caverns options, the exception being Norway, which only has offshore salt cavern potential.

When offshore salt caverns are excluded, Germany has the largest storage potential of the countries considered in this analysis, constituting 41% of the total. Overall, European storage potential for salt caverns located in onshore areas is estimated to be 23.2 PWh_{H2}, 19.0 PWh_{H2} of which is located in salt domes. Due to the lack of data on the potential analysis of European salt caverns, the results presented are compared against pumped hydropower potential. Gimeno-Gutiérrez and Lacal-Aránegui [59] report that the storage potentials of pumped hydropower to be 0.054 and 0.123 PWh (two different topologies) with a regional definition slightly different from that presented here. In their report, the Netherlands and Denmark are not included, yet Turkey and Iceland are. The highest potential is observed in Germany (9.45 PWh_{H2}), followed by Poland and Spain (7.24 PWh_{H2} and 1.26 PWh_{H2}). These three countries account for 77% of the total onshore storage potential. Despite the widespread bedded-salt deposits seen in France, the onshore storage potential is estimated at 510 TWh_{H2}, which is only 2% of the overall storage potential. This is mainly because the salt deposits are mostly located around densely populated areas. Limited areas for cavern construction can especially be seen in northern Alsace and all the salt basins of the Rhone valley in southern France.

Hydrogen storage potential in Lower Saxony, a German state, is estimated to be nearly 390 TWh_{H2} (2320 potential caverns sites) by Fichtner [60]. The assessment by Fichtner [60] is performed with an average gas density of 10 kg_{H2} m⁻³ and assumes a cavern size of 500,000 m³, separated by a distance of 280 m. Moreover, the use of a cavern safety factor (30%), geological uncertainty factor (50%) and a factor for urban and rural area exclusion (23%) significantly decreases the estimated capacity. In addition, protected areas are excluded from the potential cavern sites. In the presented work, geological uncertainty and urban and rural exclusion factors are not used; instead, an extensive land eligibility analysis is performed to take the settlement areas into account. Moreover, the salt structures in Lower Saxony are mostly salt domes, with an assumed cavern size of 750,000 m³. Considering these differences in the assumptions (especially the geological uncertainty factor), a calculated estimate difference of 880 TWh_{H2} is regarded as acceptable.

Proximity to the coast is considered to obtain up to approximately 50 km in order to still economical in terms of brine disposal [13,51,60]. This constraint is assumed to be a socio-economic factor rather than a technical one; thus, it is not applied in the eligibility analysis, after which the technical potential of salt caverns will be determined. Nevertheless, it is noted in order to observe the variation in the storage potential with respect to the proximity to the coast. In the “constrained” case, a maximum distance of 50 km for cavern construction is defined as incorporating the economic and ecological disposal of brine in the sea, resulting from cavern leaching. Even though the storage capacity is decreased to a total of 7.3 PWh_{H2}, Germany has the largest share, corresponding to 60%. Furthermore, some of the countries, such as the United Kingdom, Denmark, Greece and Portugal retain all their storage potential owing to the proximity of their suitable salt formations to the shore. In contrast, the storage potential in Poland decreases by 98% with this constraint, as most of its salt structures are located in the center of the country. There is no storage potential in France, Bosnia or Romania in the constrained scenario. The

minimum distances between the shore and salt caverns in Bosnia and Romania are estimated to be 140 km and 340 km, respectively. In France, the closest cavern is approximately 65 km from the shore. When the overall technical potential of salt caverns is considered, it is evident that there is abundant storage potential available across Europe.

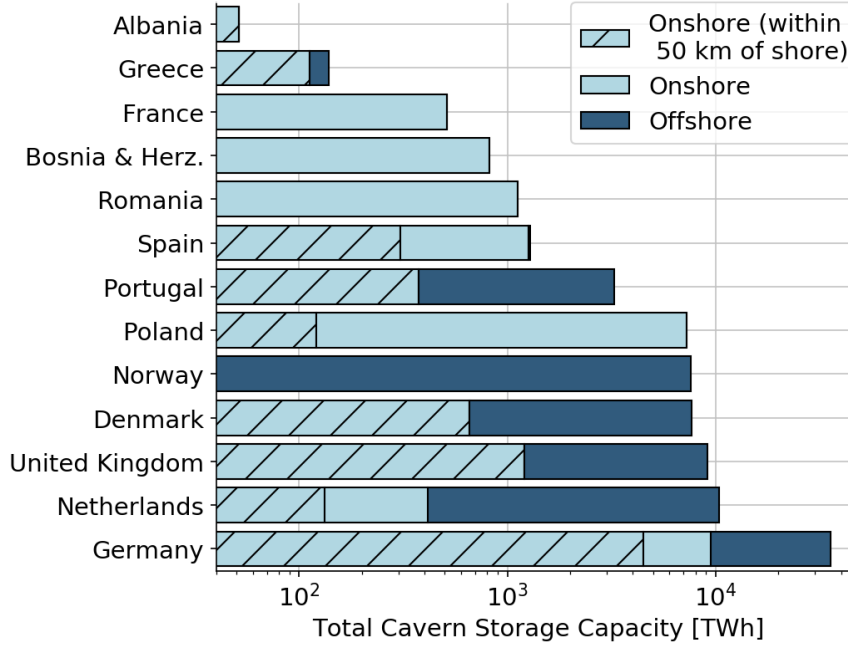


Figure 8. Total cavern storage potential in European countries classified as onshore, offshore and within 50 km of shore.

4 CONCLUSION

The intermittency of variable renewable energy sources can be overcome by incorporating the “Power to Gas” concept with consideration to the large-scale storage of hydrogen in subsurface salt deposits. Salt caverns are considered the most promising large-scale storage sites owing to their operational safety, low cost, sealing capacity and low cushion gas requirements. Therefore, this study conducted an analysis of the technical potential of salt caverns across Europe. Four main steps were followed for the estimation of European storage potential, initiated by performing a suitability assessment for the salt formations across Europe, applying land eligibility constraints derived from a review of the relevant literature, distributing the caverns across eligible locations and, finally, estimating the individual cavern storage capacity by factoring in the salt formation characteristics in terms of thermodynamic storage considerations. The suitability assessment was only performed on bedded salt deposits, as all of the domal salt deposits are assumed to be suitable for underground hydrogen storage. These results include all possible cavern locations with respect to, latitude and longitude, as well as the estimated cavern storage capacities.

The overall technical potential, including both onshore and offshore locations, is estimated to be 84.8 PWh_{H2}, with 23.2 PWh_{H2} of this potential belonging to onshore formations. When a maximum distance of 50 km to the coast is applied to the onshore salt caverns in order to take into account the economic and ecological aspects of brine disposal pipelines, onshore potential decreases down to 7.3 PWh_{H2}. Germany has the highest storage potential in both onshore and offshore contexts, with only onshore and constrained cases with capacities of 35.7, 9.4 and 4.4 PWh_{H2}, respectively. Although the capacity in Germany does not significantly change with the introduction of a 50 km constraint, countries such as France, Bosnia and Romania do not retain their capacity due to large distances to shore. In contrast, the capacities of the United Kingdom, Denmark, Greece and Portugal do not change, owing to the shore proximity of the salt deposits.

Even in the most restricted scenario, a large difference of one order of magnitude is evident compared to the technical storage potential of pumped hydropower (with a maximum value of 0.123 PWh). However, a more in-depth analysis must be performed with higher resolution geological data. With the available data including urban and rural areas for Ukraine and Belarus, the analysis can be extended to these countries in order to estimate the technical potential of underground hydrogen storage in salt caverns. Furthermore, techno-economic or techno-ecological potentials can be derived from the technical potential of salt caverns proposed in this analysis by considering detailed economic and ecological aspects. How much of the presented storage potential can or will be utilized and where to locate the possible cavern sites can be further investigated by an energy system analysis that can account for locations with high demand and generation profiles, as well as public acceptance.

ACKNOWLEDGMENTS

This work was supported by the Helmholtz Association under the Joint Initiative, “EnergySystem 2050: A Contribution of the Research Field Energy”. The authors gratefully acknowledge the support and data about the salt structures provided by DEEP.KBB GmbH.

REFERENCES

- [1] IRENA. Renewable capacity statistics 2018. Abu Dhabi: 2018.
- [2] Lehtveer M, Mattsson N, Hedenus F. Using resource based slicing to capture the intermittency of variable renewables in energy system models. *Energy Strateg Rev* 2017;18:73–84. doi:10.1016/j.esr.2017.09.008.
- [3] Albadi MH, El-Saadany EF. Overview of wind power intermittency impacts on power systems. *Electr Power Syst Res* 2010;80:627–32.
- [4] Mesfun S, Sanchez DL, Leduc S, Wetterlund E, Lundgren J, Biberacher M, et al. Power-to-gas and power-to-liquid for managing renewable electricity intermittency in the Alpine Region. *Renew Energy* 2017;107:361–72. doi:10.1016/j.renene.2017.02.020.
- [5] Al-falahi MDA, Jayasinghe SDG, Enshaei H. A review on recent size optimization methodologies for standalone solar and wind hybrid renewable energy system. *Energy Convers Manag* 2017;143:252–74. doi:10.1016/j.enconman.2017.04.019.

- [6] Reuß M, Grube T, Robinius M, Preuster P, Wasserscheid P, Stolten D. Seasonal storage and alternative carriers: A flexible hydrogen supply chain model. *Appl Energy* 2017;200:290–302. doi:10.1016/j.apenergy.2017.05.050.
- [7] Hart D, Howes J, Lehner F, Dodds P, Hughes N, Fais B, et al. Scenarios for deployment of hydrogen in contributing to meeting carbon budgets and the 2050 target. London: 2015.
- [8] Schiebahn S, Grube T, Robinius M, Tietze V, Kumar B, Stolten D. Power to gas: Technological overview, systems analysis and economic assessment for a case study in Germany. *Int J Hydrogen Energy* 2015;40:4285–94. doi:10.1016/j.ijhydene.2015.01.123.
- [9] Robinius M, Otto A, Heuser P, Welder L, Syranidis K, Ryberg D, et al. Linking the Power and Transport Sectors—Part 1: The Principle of Sector Coupling. *Energies* 2017;10:956. doi:10.3390/en10070956.
- [10] Pellow MA, Emmott CJM, Barnhart CJ, Benson SM. Hydrogen or batteries for grid storage? A net energy analysis. *Energy Environ Sci* 2015;8:1938–52. doi:10.1039/C4EE04041D.
- [11] Ozarslan A. Large-scale hydrogen energy storage in salt caverns. *Int J Hydrogen Energy* 2012;37:14265–77. doi:10.1016/j.ijhydene.2012.07.111.
- [12] Crotogino F, Donadei S, Bünger U, H. L. Large-Scale Hydrogen Underground Storage for Securing Future Energy Supplies: 18th World Hydrogen Energy Conference 2010 - WHEC 2010, May 16.-21. 2010, Essen. *Schriften Des Forschungszentrums Jülich R Energ Umwelt* 2010:506.
- [13] Tarkowski R. Underground hydrogen storage: Characteristics and prospects. *Renew Sustain Energy Rev* 2019;105:86–94. doi:10.1016/J.RSER.2019.01.051.
- [14] Landinger H, Bünger U, Raksha T, Weindorf W, Jesus S, Correias L, et al. HyUnder: Update of Benchmarking of large scale hydrogen underground storage with competing options. 2014.
- [15] Hemme C, van Berk W. Potential risk of H₂S generation and release in salt cavern gas storage. *J Nat Gas Sci Eng* 2017;47:114–23. doi:10.1016/j.jngse.2017.09.007.
- [16] Barron TF. Regulatory, Technical Pressures Prompt More U.S. Salt-Cavern Gas Storage. *Oil Gas J* 1994;92.
- [17] Letcher TM. Storing energy: With special reference to renewable energy sources. Amsterdam: Elsevier; 2016.
- [18] Stolten D, Emonts B. *Hydrogen Science and Engineering: Materials, Processes, Systems and Technology*. 2nd ed. Berlin: Wiley-VCH Verlag GmbH & Co. KGaA; 2016.
- [19] Blanco H, Faaij A. A review at the role of storage in energy systems with a focus on Power to Gas and long-term storage. *Renew Sustain Energy Rev* 2018;81:1049–86. doi:10.1016/j.rser.2017.07.062.
- [20] Landinger H, Crotogino F. The role of large-scale hydrogen storage for future renewable energy utilisation. *Second Int. Renew. Energy Storage Conf. (IRES II)*, 2007.
- [21] Tarkowski R. Perspectives of using the geological subsurface for hydrogen storage in Poland. *Int J Hydrogen Energy* 2017;42:347–55. doi:10.1016/j.ijhydene.2016.10.136.

- [22] Tarkowski R, Czapowski G. Salt domes in Poland – Potential sites for hydrogen storage in caverns. *Int J Hydrogen Energy* 2018;43:21414–27. doi:10.1016/j.ijhydene.2018.09.212.
- [23] Iordache I, Schitea D, Gheorghe A V, Iordache M. Hydrogen underground storage in Romania, potential directions of development, stakeholders and general aspects. *Int J Hydrogen Energy* 2014;39:11071–81. doi:10.1016/j.ijhydene.2014.05.067.
- [24] Michalski J, Bünger U, Crotogino F, Donadei S, Schneider G-S, Pregger T, et al. Hydrogen generation by electrolysis and storage in salt caverns: Potentials, economics and systems aspects with regard to the German energy transition. *Int J Hydrogen Energy* 2017;42:13427–43. doi:10.1016/j.ijhydene.2017.02.102.
- [25] Assessment of the Potential the A and RBC for LS and LTS of RE by HUS in E, editor. *HyUnder Project* 2014:18.
- [26] Parkes D, Evans DJ, Williamson P, Williams JDO. Estimating available salt volume for potential CAES development: A case study using the Northwich Halite of the Cheshire Basin. *J Energy Storage* 2018;18:50–61. doi:10.1016/j.est.2018.04.019.
- [27] Staffell I, Scamman D, Velazquez Abad A, Balcombe P, Dodds PE, Ekins P, et al. The role of hydrogen and fuel cells in the global energy system. *Energy Environ Sci* 2019;12:463–91. doi:10.1039/C8EE01157E.
- [28] Lütkehus I, Salecker H, Adlunger K, Klaus T, Vollmer C, Alsleben C, et al. Potenzial der Windenergie an Land: Studie zur Ermittlung des Bundesweiten Flächen-und Leistungspotenzials der Windenergienutzung an Land. Dessau-Roßlau: 2013. doi:004.
- [29] Contrucci I, Klein E, Cao N-T, Daupley X, Bigarré P. Multi-parameter monitoring of a solution mining cavern collapse: First insight of precursors. *Comptes Rendus Geosci* 2011;343:1–10. doi:10.1016/J.CRTE.2010.10.007.
- [30] Contrucci I, Klein E, Bigarré P, Lizeur A, Lomax A, Bennani M. Management of Post-mining Large-scale Ground Failures: Blast Swarms Field Experiment for Calibration of Permanent Microseismic Early-warning Systems. *Pure Appl Geophys* 2010;167:43–62. doi:10.1007/s00024-009-0005-4.
- [31] Renoux P, Fortier E, Maisons C. Microseismicity induced within hydrocarbon storage in salt caverns. *Solut. Min. Res. Inst. Conf.*, Avignon, France: 2013.
- [32] Perski Z, Hanssen R, Wojcik A, Wojciechowski T. InSAR analyses of terrain deformation near the Wieliczka Salt Mine, Poland. *Eng Geol* 2009;106:58–67. doi:10.1016/j.enggeo.2009.02.014.
- [33] Breunese JN, van Eijs RMHE, de Meer S, Kroon IC. Observation and prediction of the relation between salt creep and land subsidence in solution mining. The Barradeel case. *Solut. Min. Res. Inst. Conf.*, Chester, United Kingdom: 2003.
- [34] Lux K-H. Design of salt caverns for the storage of natural gas, crude oil and compressed air: Geomechanical aspects of construction, operation and abandonment. *Geol Soc London, Spec Publ* 2009;313:93–128. doi:10.1144/SP313.7.
- [35] Ryberg DS, Tulemat Z, Robinius M, Stolten D. *Geospatial Land Availability for Energy Systems (GLAES)* 2017.

- [36] European database of active faults and seismogenic SHARE n.d. <http://www.share-eu.org/node/70> (accessed October 10, 2018).
- [37] Natural Gas Pipelines in Europe Africa & Middle East A. Harvard WorldMap n.d.
- [38] Wang T, Yang C, Ma H, Daemen JJK, Wu H. Safety evaluation of gas storage caverns located close to a tectonic fault. *J Nat Gas Sci Eng* 2015;23:281–93. doi:10.1016/j.jngse.2015.02.005.
- [39] Stolzenburg K. Wietschel M., Geneose F., Michaelis J., Lehmann J., Miede A., Krause S., Donadei S., Crotogino F., Acht A., Horvath P-L. HR, Stolzenburg K. Wietschel M., Geneose F., Michaelis J., Lehmann J., Miede A., Krause S., Donadei S., Crotogino F., Acht A., Horvath P-L. HR, Stolzenburg K. Wietschel M., Geneose F., Michaelis J., Lehmann J., Miede A., Krause S., Donadei S., Crotogino F., Acht A., Horvath P-L. HR. Integration von Wind-Wasserstoff-Systemen in das Energiesystem: Abschlussbericht. Berlin: 2014.
- [40] DiPietro JA. Landscape Evolution in the United States: An Introduction to the Geography, Geology, and Natural History. *Landsc. Evol. United States An Introd. to Geogr. Geol. Nat. Hist.*, 2012.
- [41] Wang Y, Kowal J, Leuthold M, Sauer DU. Storage System of Renewable Energy Generated Hydrogen for Chemical Industry. *Energy Procedia* 2012;29:657–67. doi:10.1016/j.egypro.2012.09.076.
- [42] Bell IH, Wronski J, Quoilin S, Lemort V. Pure and Pseudo-pure Fluid Thermophysical Property Evaluation and the Open-Source Thermophysical Property Library CoolProp. *Ind Eng Chem Res* 2014;53:2498–508. doi:10.1021/ie4033999.
- [43] Gas Infrastructure Europe. GIE Storage Map. GIE Storage Map Dataset Excel 2016. <https://www.gie.eu/index.php/gie-publications/databases/storage-database> (accessed June 11, 2017).
- [44] Uniongas. Chemical Composition of Natural Gas n.d. <https://www.uniongas.com/about-us/about-natural-gas/chemical-composition-of-natural-gas> (accessed September 9, 2018).
- [45] Gillhaus A, Crotogino F, Albes D. Leo v. S. Compilation and Evaluation of Bedded Salt Deposits and Bedded Salt Cavern Characteristics Important to Successful Cavern Sealing and Abandonment. *Solut Min Res Institute KBB Undergr Technol GmbH* 2006;2006:257.
- [46] Le Duigou A, Bader A-G, Lanoix J-C, Nadau L. Relevance and costs of large scale underground hydrogen storage in France. *Int J Hydrogen Energy* 2017;42:22987–3003. doi:10.1016/j.ijhydene.2017.06.239.
- [47] Gutiérrez F, Calaforra JM, Cardona F, Ortí F, Durán JJ, Garay P. Geological and environmental implications of the evaporite karst in Spain. *Environ Geol* 2008;53:951–65. doi:10.1007/s00254-007-0721-y.
- [48] Nordic CCS Competence Centre. Geology and stratigraphy n.d. <https://data.geus.dk/nordiccs/geology.xhtml#s2> (accessed June 11, 2018).
- [49] Doornenbal H. Petroleum geological atlas of the southern Permian Basin Area. Houten, the Netherlands: EAGE Publications BV; 2010.

- [50] Bundesanstalt für Geowissenschaften und Rohstoffe. Geoviewer (InSpEE Salzstrukturen) n.d.
- [51] Noack C, Burggraf F, Hosseiny SS, Lettenmeier P, Kolb S, Belz S, et al. Studie über die Planung einer Demonstrationsanlage zur Wasserstoff-Kraftstoffgewinnung durch Elektrolyse mit Zwischenspeicherung in Salzkavernen unter Druck: Ludwig Bölkow Systemtechnik GmbH (LBST), Fraunhofer Institut für Solare Energiesysteme (ISE), KBB. 2014.
- [52] Evans DJ, Holloway S. A review of onshore UK salt deposits and their potential for underground gas storage. *Geol Soc London, Spec Publ* 2009;313:39–80. doi:10.1144/SP313.5.
- [53] Czapowski G, Bukowski K. Geology and resources of salt deposits in Poland: The state of the art. *Geol Q* 2010;54:509–18.
- [54] Ślizowski J, Lankof L, Urbańczyk K, Serbin K. Potential capacity of gas storage caverns in rock salt bedded deposits in Poland. *J Nat Gas Sci Eng* 2017;43:167–78. doi:10.1016/j.jngse.2017.03.028.
- [55] Bukowski K. Salt Sources and Salt Springs in the Carpathian Zone: Explorations in salt archaeology in the Carpathian zone Chapter: Salt sources and salt springs in the Carpathian zone. *Archaeolingua* 2013:9.
- [56] Krézsek C, Bally AW. The Transylvanian Basin (Romania) and its relation to the Carpathian fold and thrust belt: Insights in gravitational salt tectonics. *Mar Pet Geol* 2006;23:405–42. doi:10.1016/j.marpetgeo.2006.03.003.
- [57] Cocker MD, Orris GJ, Dunlap P. Geology and Undiscovered Resource Assessment of the Potash-Bearing Pripyat and Dnieper-Donets Basins, Belarus and Ukraine: Global Mineral Resource Assessment - Scientific Investigations Report 2010-5090-BB. *US Geol Surv* 2010:130.
- [58] Stovba S., Stephenson R. Style and timing of salt tectonics in the Dniepr-Donets Basin (Ukraine): implications for triggering and driving mechanisms of salt movement in sedimentary basins. *Mar Pet Geol* 2002;19:1169–89. doi:10.1016/S0264-8172(03)00023-0.
- [59] Gimeno-Gutiérrez M, Lacal-Arántegui R. Assessment of the European potential for pumped hydropower energy storage. 2013. doi:10.2790/86815.
- [60] Fichtner. Erstellung eines Entwicklungskonzeptes Energiespeicher in Niedersachsen. 2014.
- [61] Velaj T. The structural style and hydrocarbon exploration of the subthrust in the Berati Anticlinal Belt, Albania. *J Pet Explor Prod Technol* 2015;5:123–45. doi:10.1007/s13202-015-0162-1.
- [62] Gillhaus A. Underground Salt Deposits of Portugal and Spain - Geological Potential to Meet Future Demand for Natural Gas Storage? *Solut Min Res Insitute* 2008:20.
- [63] Lopes FC, Pereira AJ, Mantas VM. Mapping of salt structures and related fault lineaments based on remote-sensing and gravimetric data: The case of the Monte Real salt wall (onshore west-central Portugal). *Am Assoc Pet Geol Bull* 2012;96:615–34.

doi:10.1306/08101111033.

- [64] Fernandes P, Rodrigues B, Borges M, Matos V, Clayton G. Organic maturation of the Algarve Basin (southern Portugal) and its bearing on thermal history and hydrocarbon exploration. *Mar Pet Geol* 2013;46:210–33. doi:10.1016/j.marpetgeo.2013.06.015.
- [65] Soto JJ, Flinch JF, Tari G. *Permo-Triassic Salt Provinces of Europe, North Africa and the Atlantic Margins*. 1st ed. Elsevier; 2017. doi:10.1016/C2015-0-05796-3.
- [66] Carneiro JF, Matos CR, van Gessel S. Opportunities for large-scale energy storage in geological formations in mainland Portugal. *Renew Sustain Energy Rev* 2019;99:201–11. doi:10.1016/J.RSER.2018.09.036.