



Development of a Bi/Tl separation scheme for the proof of ^{209}Bi α -decay in old mineral samples

Kevin Beu¹ · Erik Strub^{1,2} · Raúl O. C. Fonseca³ · Karin Greef⁴

Received: 9 December 2019 / Published online: 8 July 2020
© The Author(s) 2020

Abstract

The aim of this study is the development of a separation technique for geological samples, namely bismuthinites, with the goal to isolate Tl from excess amounts of Bi. This will enable an isotopic measurement of the Tl content on the ultra-trace level to identify a possible signature of Bi α -decay. The separation of Tl from other elements like e.g. Pb has been the subject of numerous studies. However, the separation of ultra-traces of Tl from bulk Bi had not yet been investigated sufficiently. This paper describes a separation technique for the system Bi/Tl for application to ultra-trace analysis. The separation technique uses a column chromatographic system, utilizing the specific redox behavior of Tl. The results show, that Tl can be successfully separated in appearance of vast excess amounts of Bi, showing recovery rates up to 96%. The developed procedure was successfully applied for the ultra-trace analysis on a number of bismuthinites using ICP-MS. On base of the results it is discussed, which prerequisites bismuthinite samples must fulfill to be suitable for the quantification of Bi alpha decay on base of the Tl isotopic ratio.

Keywords ^{204}Tl · Separation · Analysis · LSC · ICP-MS · Bismuthinites · Bi α -decay

Introduction

First proof of the α -decay of ^{209}Bi

In 2003 de Marcillac et al. detected decay events during background measurements with a scintillation bolometer using bismuth germanate (BGO) detectors [1]. Scintillation bolometers are commonly used to discriminate γ -radiation from α -radiation. The detected events yielded evidence for

α -particles with an energy of 3.130 ± 0.016 MeV. In total, 128 decay-events were detected with a measuring time of 432,000 s using a 92 g BGO crystal [1]. These results were used to calculate a half life value of $1.9 \pm 0.2 \times 10^{19}$ a for ^{209}Bi . This is in agreement with the expected α decay of ^{209}Bi to ^{205}Tl based on the mass difference of these nuclei. However, no further investigations regarding the stable decay-product ^{205}Tl were performed back then. A direct detection of the decay product ^{205}Tl is very challenging, because BGO is an artificial material and therefore it cannot be expected that the number of ^{205}Tl atoms generated since the production of the BGO crystal is sufficient to be detected e.g. by mass spectrometry.

Ambition for the direct proof of the α -decay of ^{209}Bi

However, if (geologically) old Bi containing materials are used, it can be expected that the number of generated ^{205}Tl atoms is sufficient for detection by ICP-MS. Based on the half life, in 1 g of Bi during 1 Ma, about 10^8 atoms of ^{205}Tl are generated, an amount, that is well accessible to measurements by MC-ICP-MS (multi collector inductively coupled plasma mass spectrometry). If there are already Tl traces present in the material—what cannot be excluded— ^{205}Tl

Electronic supplementary material The online version of this article (<https://doi.org/10.1007/s10967-020-07267-6>) contains supplementary material, which is available to authorized users.

✉ Erik Strub
erik.strub@uni-koeln.de

- ¹ Division of Nuclear Chemistry, University of Cologne, Zùlpicher Str. 45, 50674 Cologne, Germany
- ² Nuclear Chemistry (INM-5), Forschungszentrum Jùlich, Wilhelm-Johnen-Str, 52425 Jùlich, Germany
- ³ Institute of Geology, Mineralogy and Geophysics, Ruhr University of Bochum, Universitätsstr. 150, 44801 Bochum, Germany
- ⁴ Geographical Institute, University of Cologne, Zùlpicher Str. 45, 50674 Cologne, Germany

from Bi decay will shift the $^{205}\text{Tl}/^{203}\text{Tl}$ ratio. Therefore, our strategy is to proof the α -decay of ^{209}Bi directly by isotopic deviations of the Tl content. This method has the potential for a high accuracy using old Bi materials. For this goal several previous working steps are needed, (1) a suitable separation technique and (2) suitable raw materials, namely geologically old Bi minerals with low Tl content.

A specific separation technique for the system Bi/Tl on ultra-trace level

In 1999, Rehkämper and Halliday published their studies concerning a separation procedure, based upon the combination of previously developed separation techniques for the system Pb/Tl, for the purpose of isotope analysis of geological samples by MC-ICP-MS [2]. They used a two-stage anion exchange chromatography to separate trace amounts of Tl from other elements of the geological matrix. The separation uses the specific redox behaviour of Tl (see below). This technique has been successfully applied to isotopic analysis of Tl in Pb minerals [2], e.g. isotopic analyses of Tl in seawater and deposits [3] as well as in meteorites [4]. The procedure makes use of the distinct redox behavior of Tl: Tl(III) is not thermodynamically stable in aqueous solutions, but it can be stabilized under oxidative conditions. For oxidation, a mixture of $\text{HBr}-\text{HNO}_3-\text{Br}_2$ (aq) has been used. Under this conditions, Tl forms an anionic complex $[\text{TlBr}_4]^-$, which can be separated from the Bi-species using anion exchange chromatography, while Pb is expected to run through the column as a cationic species. During the separation, the column has to be rinsed continuously with the oxidizing agent to keep constant oxidative conditions, otherwise the Tl(III) complex gets partially reduced to $\text{Tl}^+(\text{aq})$ which is eluted prematurely. After successful separation of the Pb content, in a second step, the Tl complex is reduced with SO_2 to Tl^+ for elution [2]. The advantage of this method is the introduction of all redox agents in gaseous form, which can be expected to suppress the introduction as a contaminant on an ultra trace level. This technique has been successfully applied to ultra-trace analysis of Tl in Pb-minerals and was adapted in this work onto the system Bi/Tl. First pre-tests of the Bi/Tl separation chemistry were performed during the diploma thesis of Beu [5].

Suitable raw materials

The second step needed for our purpose would be the acquisition of suitable Bi raw materials, preferably untreated bismuthinites, since these minerals often contain comparatively less amounts of natural Tl impurities. Although metal sulphides also might contain Tl traces, the literature lists examples of sulphidic minerals with very low known Tl concentrations, e.g. pyrite (FeS_2 ; <DL (10 ppb)), sphalerite

(ZnS ; < 50 ppb) and galena (PbS ; < 50 ppb) [6, 7]. This made us confident that it is possible to find also bismuthinites (Bi_2S_3) with such low Tl impurities. A high geological age of the samples is nevertheless essential, otherwise an isotopic shift to ^{205}Tl would not be recognizable. The precise criteria for the selection of suitable raw materials will be discussed later in the experimental section. The measurement of the Tl content and the small expected isotopic shift to ^{205}Tl is technically possible using MC-ICP-MS. With these results the estimation of the half life of ^{209}Bi is possibly more accurate than using low numbers of decay-events for a calculation. Additionally, in the case of success, the development of a geological chronometer for Bi-material would be possible.

Problems to be dealt within this study

The main goal of this study is the transfer of the separation technique of Rehkämper et al. on the system Bi/Tl. For proof of principle, the first approaches of the separation technique were performed using n.c.a. (non carrier added) amounts of ^{204}Tl as radioactive tracer. The subsequent analysis was performed using liquid scintillation counting (LSC). Further, Bi minerals in sulphidic form were acquired and first screened for their natural Tl content using laser ablation inductively coupled plasma mass spectrometry (LA-ICP-MS). Finally, the developed separation technique and individual modifications were performed using bismuthinite samples with subsequent analysis using ICP-MS. Tables 1 and 2 in the supplementary information give an overview about the selected bismuthinite samples, their Tl contents, their crystal sizes and their corresponding deposits.

Experimental

Development of a separation procedure for the system Bi/Tl and proof of principle using ^{204}Tl as a radioactive tracer

All solutions were prepared freshly at the day of use. Details of the used chemicals are given in Table 1. Br_2 water was prepared using 3 mL Br_2 and 6 mL water. The *oxidative solution 1* was prepared mixing 9 M HBr, 0.5 M HNO_3 and $\text{Br}_2(\text{aq})$ in the ratio 1:1:0.01. The *reductive solution 2* was prepared bubbling SO_2 through 0.1 M HCl. Aqua regia was prepared mixing 3 parts of 37% HCl with 1 part of 65% HNO_3 .

A comprehensive flow chart of the chemical separation can be found in Fig. 3 of the supplement. In a 10 mL Savillex® Beaker, 0.5–0.8 g of Bi metal or bismuthinite were dissolved. Metal samples were dissolved in 5 mL 6 M HNO_3 ; bismuthinite samples were dissolved in 6 mL aqua

Table 1 chemicals used for preparation of the solutions

Water for dilutions	Millipore water (18.2 MΩ cm)
Br ₂	≥ 99.5% Br ₂ EMSURE®
HBr	47% AnalaR NORMAPUR®, VWR®
HNO ₃	65% p.a., VWR®
SO ₂	Sigma-Aldrich®
HCl	37% p.a., VWR®
Liquid scintillation cocktail	Optiphase® Hi-Safe 2

regia. The samples were evaporated to dryness at 125 °C on a hotplate. The residue was converted into the bromide form using 5 mL HBr (4.5 M) and evaporated to dryness at 125 °C. The remaining residue was dissolved in 5 mL *oxidative solution 1*. As a model for ultra-traces of Tl, a n.c.a. ²⁰⁴Tl stock solution was used as a radioactive tracer. With addition of 0.2 mL ²⁰⁴Tl solution (approximately 3×10^{12} atoms), the mixture was refluxed for at least 24 h at 125 °C and cooled down to room temperature and stored for at least 1 h. For this study 9 M HBr, instead of 0.2 M HBr (as in [2] for the Pb separation) was used as the oxidative agent to avoid the precipitation of BiOBr. BiOBr may occur as an unsolvable residue in aqueous environment and is only solvable in concentrated HBr. Additionally, due to the usage of 9 M HBr instead of 0.2 M HBr, the recovery rates of ²⁰⁴Tl improved significantly. For column chromatography, a 3 mL PP-pipette was used, prepared with a quartz wool plug. 2 mL wet volume of anionic resin (DOWEX® 1X8 100–200 mesh) was used as a stationary phase. The column was cleaned and equilibrated using subsequently 10 mL of *reductive solution 2* and 10 mL of *oxidative solution 1*. After rinsing and equilibration, the sample was taken up in 6 mL *oxidative solution 1* and given onto the resin. The beaker was washed out three times using 6 mL *oxidative solution 1*. When all Tl was washed onto the resin and Bi was eluted, Tl was eluted in a second step with 10 mL *reductive solution 2* until no measurable activity remained on the resin. The beaker and the resin were checked for remaining radioactive content using a portable activity counter (S.E.A.® CoMo 170). The obtained fractions were collected into 15 mL centrifuge PP-vials and transferred into 20 mL PP-LSC vials with addition of 10 mL scintillation cocktail. The fractions were analyzed using LSC (Beckman Instruments Inc.® LS 6500 Analyzer). A reference sample of ²⁰⁴Tl was prepared using 0.2 mL ²⁰⁴Tl (aq.) in 10 mL Scintillation cocktail. Additionally, a background reference was prepared using 10 mL scintillation cocktail. The samples were measured in the “Single Rack Mode”. When using the single rack mode, the LSC counts every measurable event, regardless to the radioactive nuclide. The only measurable source of β radiation was ²⁰⁴Tl, which was verified by the background measurement. Details on the LSC measurements are given in Table 3 of the supplement.

Selection of suitable geological mineral samples

Several bismuthinite crystals have been obtained commercially (see supplement Tables 1 and 2), in order to test the feasibility of the Bi–Tl isotope system as a geochronometer. Each bismuthinite sample was screened for its Tl content using LA-ICP-MS (*Resonetics*® Resolution M50E 193 nm ArF Excimer Laser). However, this technique can only deliver a first estimation since each output value corresponds to an individual laser-spot on the surface of the sample, with cylindric volume of approximately 314 mm³ (50 μm radius and approx. 30–40 μm depth). To account for inhomogenities, each sample was measured 10 times. Following the procedure outlined in Longerich et al. [8], the count rates of ²⁰³Tl and ²⁰⁵Tl were normalized to those of an internal standard, which was either ²⁰⁹Pb for Bi₂S₃ or ³³S for samples that had pyrite.

First application of the separation technique to bismuthinite samples and subsequent trace analysis

0.498 g bismuthinite from Karaganda/Kazakhstan and 0.477 g bismuthinite from Tazna/Bolivia were dissolved in 6 mL aqua regia and refluxed for 24 h at 125 °C in a Savillex® beaker. Aqua regia was used for these approaches to ensure a complete dissolution of the bismuthinite and its matrix elements. After evaporation to dryness, the remaining solid was dissolved in 6 mL HBr (4.5 M) and evaporated to dryness. From this point, the separation procedure was followed as described above (see flow chart in Fig. 1 of the supplement). The obtained Tl fractions were further processed for ICP-MS measurements strictly following the procedure as given in [2]. The samples were stored at 6 °C. Immediately before the ICP-MS measurement, the samples were evaporated until only a small drop remained which was taken up in 6 mL HNO₃ (0.4 M). The samples were investigated for their Tl content using ICP-MS (*Thermo Fisher*® X-Series II). Each sample was measured at different dilution factors to prove consistency of the measurements. The calibration was performed using a prepared reference sample of 1 ppm Tl (dilution factor 100). Details on these measurements are given in Table 4 of the supplement. To check the accuracy of the calibration, the certified TMDA-51.4 reference material with a Tl concentration of 20.4 ± 1.7 μg/L was measured. Additionally, blanks of the used acids and H₂O samples were investigated for any Tl contamination, yielding evidence that Tl impurities were in all cases below the detection limit of the ICP-MS device. The detection limit for Tl of the *Thermo Fisher*® X-Series II was determined according to DIN32645: LOD = 0.006 μg/L; LOQ = 0.010 μg/L.

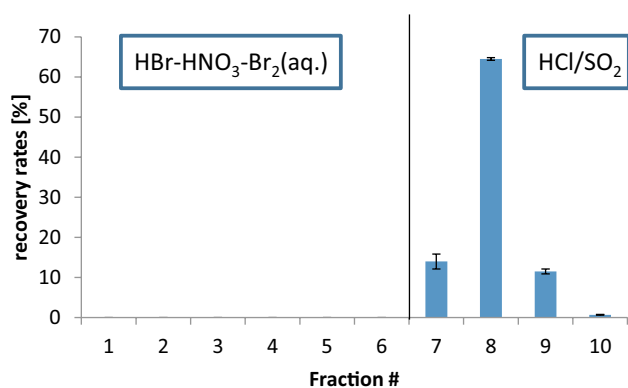


Fig. 1 Plotted Averages of the obtained fractions (each 8 mL) of the LSC approaches, averaged over 9 separations (see supplementary information)

Results and discussion

Development of a separation procedure for the system Bi/Tl and proof of principle using ^{204}Tl as a radioactive tracer

Our results show, that the procedure of Rehkämper could be successfully adapted for the separation of Tl from Bi. The chromatography, averaged over 8 different separations is given in Fig. 1. Additionally, the values are given in the supplementary information (Table 3) in counts per minute (CPM) with the corresponding recovery rates rr ([%]). The values of the ^{204}Tl reference samples (Tl_{ref}) for the different approaches are listed there as well.

The uncertainties are calculated from the count rates (2σ). The recovery rates in the experiment ranged from 76 to 96% (average 92%), and the main ^{204}Tl activity was found in fraction 8 with two exceptions where the main activities were found in fractions 7 and 9, respectively. These differences are probably due to differences in the column packing, but the results show that the method is robust if all three fractions 7–9 are collected as Tl fraction.

Selection of suitable geological mineral samples

The suitability of sample minerals depends on their individual Tl content compared to their geological age to maximize the expected radiogenic excess $\epsilon^{205}\text{Tl}$. The radiogenic excess is commonly given as ϵ within the geological context, with $\epsilon = 1$ referring to an enhancement of the isotopic ratio of 1/10,000 with respect to the natural composition. The isotopic shift to ^{205}Tl due to α -decay expected of ^{209}Bi would only be recognizable using samples of a high geological age

and low impurities of natural Tl. The radiogenic excess of ^{205}Tl can be calculated using the common formula (1):

$$\epsilon^{205}\text{Tl} = \frac{R_{\text{dec}} - R_{\text{nat}}}{R_{\text{nat}}} \times 10^4 \quad (1)$$

^{209}Bi decay leads to ^{205}Tl . If the material contains already primordial traces of Tl, which cannot be excluded, the Tl isotopic ratio is shifted from the natural ratio R_{nat}

$$R_{\text{nat}} = \frac{{}^{205}\text{Tl}_{(\text{o})}}{{}^{203}\text{Tl}_{(\text{o})}} \quad (2)$$

to higher values R_{dec}

$$R_{\text{dec}} = \frac{{}^{205}\text{Tl}_{(\text{o})} + {}^{205}\text{Tl}_{(\text{rad})}}{{}^{203}\text{Tl}_{(\text{o})}} \quad (3)$$

R_{dec} and R_{nat} refer to the calculated and the natural isotopic ratio of Tl in context to the geological sample age. ${}^{203}\text{Tl}_{(\text{o})}$ and ${}^{205}\text{Tl}_{(\text{o})}$ refer to the original isotope composition of Tl. ${}^{205}\text{Tl}_{(\text{rad})}$ refers to the estimated radiogenic excess of the isotope ^{205}Tl . For the preselection, the geological age of the bismuthinite samples is essential. To maximize the expected radiogenic excess, the samples should be as old as possible and to confirm Tl traces as low as possible. For any primordial trace Tl contents, an expected ϵ can be calculated depending on the age, as illustrated in Fig. 2. The radiogenic excess depends on both primordial Tl concentration and age. For example a sample with a primordial Tl concentration of 100 ppb will show an excess of $\epsilon = 1$ after ~200 Ma or $\epsilon = 5$ after ~1000 Ma. While $\epsilon = 0.5$ is measurable with MC-ICP-MS, the natural variation of ϵ due to fractionation/mineralization process is in the range of $\epsilon = -2.12 \pm 1.73$ up to $\epsilon = 11.7 \pm 1.3$ [2]. Hence for an unbiased determination of the radiogenic excess, $\epsilon > 5$ is desirable. Even without

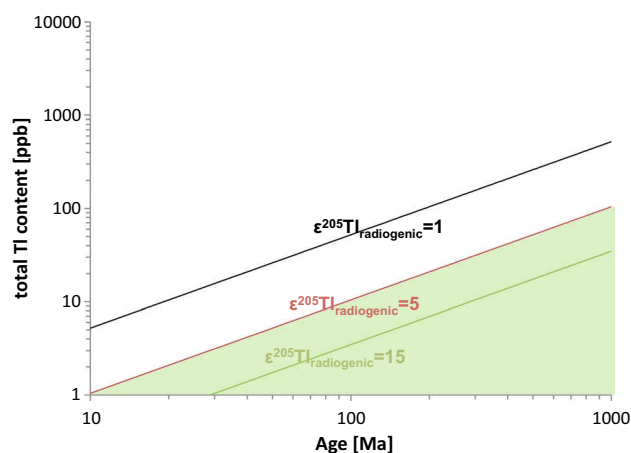


Fig. 2 Calculated radiogenic excess $\epsilon^{205}\text{Tl}$. The green area represents the desirable measuring range

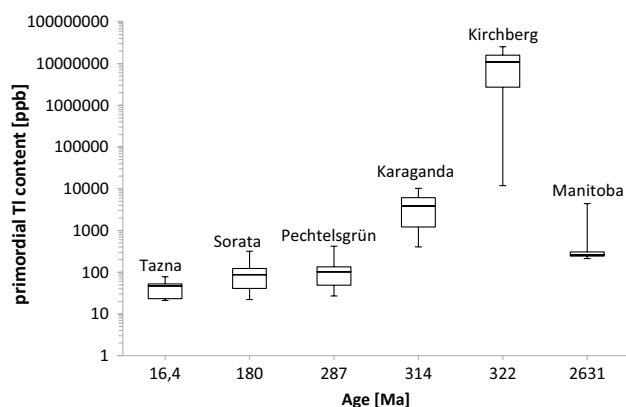


Fig. 3 Values of the Tl content and the corresponding geological sample age

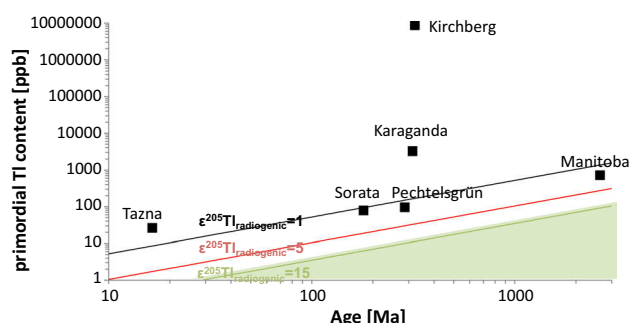


Fig. 4 Averages of the Tl content and the estimated radiogenic excess $\epsilon^{205}\text{Tl}$ in bismuthinite samples. The green area represents the desirable measuring range

discussing geological context, deviations with $\epsilon > 15$ will be highly significant for quantification of Bi α -decay. Taking geological context into account, also samples with $\epsilon > 5$ are estimated to be sufficient.

The results of the LA-ICP-MS- analysis are shown in Fig. 3. Because pyrite occurred as small intergrowths of FeS_2 and Bi_2S_3 , the signal obtained during LA-ICP-MS analysis of these volumes was representative of a mixture of the Tl content of both phases, which made it challenging to use the right internal standard and evaluate the data.

In Fig. 4 the measured Tl concentrations of the samples are plotted against the deposit age to illustrate under which conditions an isotopic analysis of the Tl content for ^{209}Bi α -decay determination is promising.

All samples contain a significant Tl content. Noticeable is the minor scattering of the values of the Tazna- and the Karaganda sample as well as the minor Tl content of the Tazna sample. These are ideal features for an isotopic analysis; therefore, these 2 samples were chosen for digestion and a more precise determination of the bulk Tl content (see below). Unfortunately, the geological sample age of the

Tazna sample is not in the significant range to identify an isotopic shift due to the α -decay of ^{209}Bi . It is notable that, with the exception of the Kirchberg sample, all bismuthinite samples consist of grown crystals ≥ 1 cm and contain lower amounts of Tl (Tazna: 0.021 ppm; Sorata: 0.022 ppm; Pechtelsgrün: 0.027 ppm). For the samples from Kirchberg, Karaganda and Tazna, the calculated radiogenic excess of ^{205}Tl is below significance and probably below the measuring scope of MC-ICP-MS ($\epsilon^{205}\text{Tl} < 1$). The radiogenic excess of Sorata, Pechtelsgrün and Manitoba is about $1 < \epsilon^{205}\text{Tl} < 5$. For these samples, an estimated isotopic excess of ^{205}Tl is in range of attribution to a radiogenic origin and is placed within the scope of a geological evaluation. The Manitoba sample is interesting regarding its geological deposit age. Unfortunately, this sample has insufficient material for an isotopic analysis. Therefore, only the general Tl content was investigated with LA-ICP-MS to determine whether bismuthinite samples from this region are suitable candidates for an isotopic analysis. As it is shown in Fig. 2, for a precise attribution of $\epsilon^{205}\text{Tl}$ to a radiogenic origin, geological sample ages of $> 8 \times 10^8$ years with Tl contents < 20 ppb would be optimal ($\epsilon^{205}\text{Tl} = 15$). To conclude, bismuthinites of a sufficient geological age were found, which are not as homogenous as they need to be for an isotopic analysis. For all samples, the radiogenic excess is probably just minor and thus insufficient for an estimation of the half-life of ^{209}Bi . For Pechtelsgrün and Sorata, the results show some single values with $\epsilon > 5$, but the samples seem to be inhomogeneous. This corresponds to the enlarged scattering of the Tl concentration values of these samples, since other samples seem to be more homogeneous. The samples with minor scattering values of the Tl content contain of enlarged crystals. Especially the Tazna sample shows low Tl content. The Tazna sample would be an ideal candidate for a half-life estimation of ^{209}Bi if it would be older. The Manitoba sample would be suitable with a low content of Tl and sufficient sample material. We are confident that there are suitable Tl samples, which both contain a requisite low Tl content and show a significant sample age. The samples in our collection are not suitable for an isotope analysis. For the final test of the separation procedure, the Tazna- and Karaganda samples were chosen, since the scattering of the Tl concentrations of the Tazna- and Karaganda sample was just minor so these samples were considered homogeneous. Although the Manitoba sample could in principle also be a promising candidate, it was not included because it was estimated that the total amount of bismuthinite in this sample was insufficient for an isotopic measurement. In contrast to the laser ablation procedure, the separation technique delivers bulk-concentrations for Tl. Therefore, the separation procedure shall verify the results of the LA-ICP-MS analysis and will be a final test for the chemistry.

First application of the separation technique to bismuthinite samples and subsequent trace analysis

The LA-ICP-MS technique described above is limited by the fact, that only several local spots in a specific area on the crystal surface can be investigated for pre-testing. But the distribution of the Tl content within the crystal is not necessarily homogenous. A complete digestion of the crystals and subsequent separation and ICP-MS-investigation was performed to clarify the pre-test results, to demonstrate the investigation of the integral Tl content. This would be an important prerequisite regarding the investigation of an isotopic shift to ^{205}Tl .

The isotopic ratio was calculated for the investigated bismuthinite samples (Tazna and Karaganda) as described before (see formula 1). The deviations between pre-testing with LA-ICP-MS and the ICP-MS analysis performed on the digested samples are shown in the following illustrations (Figs. 5 and 6).

While the Tl content of the Tazna sample is slightly higher than estimated on base of the LA-ICP-MS measurements, it is significantly lower in the Karaganda sample. This is a hint that the previously measured Tl might mainly be found at the sample surface. However, in both cases, the Tl content is unfortunately beyond the desired radiogenic range. However, in general, bismuthinites with a significant low natural Tl content are available, e.g. from Vickeroy mine (Zimbabwe), with a geological age of 2.7×10^9 and a Tl content in range of 100 ppt [9]. So although it was not possible in this study to quantify Bi α -decay, we are confident that suitable geological samples can be found.

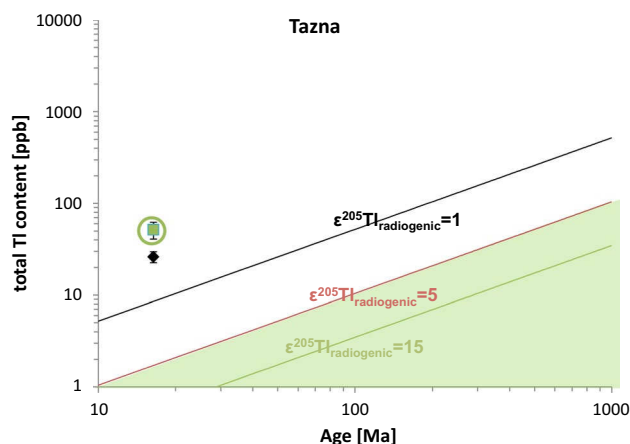


Fig. 5 Radiogenic excess $\epsilon^{205}\text{Tl}$ of the Tazna sample. Comparison of the LA-ICP-MS results (black) with the ICP-MS result (green)

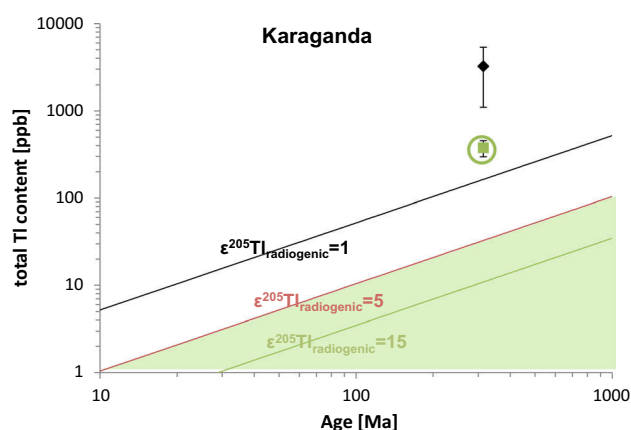


Fig. 6 Radiogenic excess $\epsilon^{205}\text{Tl}$ of the Karaganda sample. Comparison of the LA-ICP-MS results (black) with the ICP-MS result (green)

Conclusions

In this study, an established separation procedure for the system Pb/Tl by Rehkämper et al. was modified and successfully adapted on the system Bi/Tl. Ultra-traces of Tl were successfully simulated using n.c.a. amounts of ^{204}Tl and analyzed using LSC. The procedure was verified by an application to geological samples. Generally, the usage of gaseous components as redox reagents was very successful in avoiding contamination with Tl which was never observed during the study. The method provides a robust separation, reproducibility, high recovery rates and delivers bulk concentrations of Tl. The separation technique was successfully applied for the ultra-trace analysis of Tl in bismuthinites using ICP-MS for analysis. It was yet not possible to obtain specific material, which fulfills simultaneously both needed criteria for an isotopic analysis (old geological age as well as low Tl content). However, samples meeting these criteria separately have been identified. In consequence, although it was yet not possible in this study to quantify Bi α -decay, we are confident that suitable geological samples can be found.

Acknowledgements Open Access funding provided by Projekt DEAL. For additional support we want to thank Dr. Peter Sprung (Paul Scherrer Institut, Villigen, Switzerland) and the working group of Prof. Dr. Carsten Münker of the Institute for Geology and Mineralogy/University of Cologne as well as Prof. Dr. Mark Rehkämper of the Imperial College London.

Open Access This article is licensed under a Creative Commons Attribution 4.0 International License, which permits use, sharing, adaptation, distribution and reproduction in any medium or format, as long as you give appropriate credit to the original author(s) and the source, provide a link to the Creative Commons licence, and indicate if changes were made. The images or other third party material in this article are included in the article's Creative Commons licence, unless indicated otherwise in a credit line to the material. If material is not included in the article's Creative Commons licence and your intended use is not permitted by statutory regulation or exceeds the permitted use, you will

need to obtain permission directly from the copyright holder. To view a copy of this licence, visit <http://creativecommons.org/licenses/by/4.0/>.

References

1. de Marcillac P, Coron N, Dambier G, Leblanc J, Moalic JP (2003) *Nature* 422:876–878
2. Rehkämper M, Halliday AN (1999) *Geochim Cosmochim Acta* 63:935–944
3. Rehkämper M, Frank M, Hein JR, Porcelli D, Halliday A, Ingri J, Liebetrau V (2002) *Earth Sci Lett* 197:65–81
4. Nielsen SG, Rehkämper M, Halliday AN (2006) *Geochim Cosmochim Acta* 70:2643–2657
5. Beu K (2015) Diploma thesis, University of Cologne
6. Zendelovska D, Stafilov T (2001) *Anal Sci* 17:425
7. Zhou T, Zhang L, Yuan F, Fan Y, Cooke DR (2010) *Earth Sci Front* 17:306 (**tab 1 in English**)
8. Longerich H, Jackson SE, Günther D (1996) *J Anal Atom Spectrom* 11:899–904
9. Oberthür T, Weiser TW (2008) *Miner Mag* 72:953

Publisher's Note Springer Nature remains neutral with regard to jurisdictional claims in published maps and institutional affiliations.