

Membrane stiffness and myelin basic protein binding strength as molecular origin of multiple sclerosis

Benjamin Krugmann^{1,2}, Aurel Radulescu¹, Marie-Sousai Appavou¹, Alexandros Koutsoubas¹, Laura R. Stingaciu³, Martin Dulle⁴, Stephan Förster⁴, and Andreas M. Stadler^{2,4,*}

¹Jülich Centre for Neutron Science at MLZ, Forschungszentrum Jülich GmbH, Lichtenbergstr. 1, 85748 Garching, Germany

²RWTH Aachen University, Institute of Physical Chemistry, Landoltweg 2, 52056 Aachen, Germany

³NScD, SNS, Oak Ridge National Laboratory, Oak Ridge, Tennessee 37830, United States

⁴Jülich Centre for Neutron Science (JCNS-1) and Institute for Biological Information Processing (IBI-8), Forschungszentrum Jülich GmbH, 52425 Jülich, Germany

*a.stadler@fz-juelich.de

ABSTRACT

Myelin basic protein (MBP) and its interaction with lipids of the myelin sheath plays an important part in the pathology of multiple sclerosis (MS). Previous studies observed that changes in the myelin lipid composition lead to instabilities and enhanced local curvature of MBP-lipid multilayer structures. We investigated the molecular origin of the instability and found that the diseased lipid membrane has a 25% lower bending rigidity, thus destabilizing smooth $> 1 \mu\text{m}$ curvature radius structures such as in giant unilamellar vesicles. MBP-mediated assembling of lipid bilayers proceeds in two steps, with a slow second step occurring over many days where native lipid membranes assemble into well-defined multilayer structures, whereas diseased lipid membranes form folded assemblies with high local curvature. For both native and diseased lipid mixtures we find that MBP forms dense liquid phases on top of the lipid membranes mediating attractive membrane interactions. Furthermore, we observe MBP to insert into its bilayer leaflet side in case of the diseased lipid mixture, whereas there is no insertion for the native mixture. Insertion increases the local membrane curvature, and could be caused by a decrease of the sphingomyelin content of the diseased lipid mixture. These findings can help to open a pathway to remyelination strategies.

Introduction

Neurodegenerative diseases represent a major threat to human health. Multiple sclerosis (MS) is an incurable neurodegenerative disease leading to demyelination and axon damage in the human central nervous system (CNS). The myelin sheath is responsible for fast saltatory axonal signal conduction. Myelin damage slows down and halts nerve conduction. Strategies for remyelination suffer from the very limited knowledge of the molecular mechanism leading to myelin sheath instability and demyelination. The myelin sheath plays an important role for neuron signal conduction as it is the insulation layer, which enables fast signal transport over large distance in the white brain matter by reducing conduction losses. The saltatory signal transduction of myelinated neurons is more than one order of magnitude faster than for unmyelinated neurons¹. However, in demyelinating diseases like MS the myelin sheath can be damaged or even totally destroyed, which results in severe problems of signal conduction and, therefore, can lead to the multiple neuronal symptoms connected to demyelinating diseases².

The myelin sheath is a multilamellar membrane wrapped around axons of neurons³. In the CNS this membrane is produced by oligodendrocytes. The cytoplasmic membrane leaflets of the oligodendrocytes are attached to each other by the interaction of the membrane lipids with myelin basic protein (MBP).

In literature many studies have been reported concerning the interaction of MBP with liposomes or flat oriented bilayers as model membranes (e.g.⁴⁻¹⁰). In the recent years particularly complex biomimetic membrane systems mimicking the myelin membrane have come into the focus of science (e.g.¹¹⁻¹⁷). In those biomimetic systems, it is the complex lipid composition and the asymmetry of the lipid distribution between inner and outer membrane leaflets of myelin membranes that are considered. The myelin membrane is composed of a variety of different lipid molecules with various head sections and alkyl chain lengths ranging over a broad distribution including different saturation levels. Additionally, myelin membranes have a high amount of cholesterol. Myelin is a strongly anisotropic membrane and the inner (cytoplasmic) and outer (extracellular) leaflets are composed of very different lipid compositions. Therefore, more realistic model membranes mimicking the

cytoplasmic or extracellular myelin membrane composition have been investigated recently^{14,17–20}. In those studies, different lipid compositions have been chosen to mimic native healthy and diseased myelin membranes occurring in the experimental autoimmune encephalomyelitis (EAE) – the standard mouse model of MS. The effect of MBP on multilamellar native and diseased cytoplasmic model membranes was investigated and for the modified composition structural instabilities have been observed that are similar to in vivo conditions that occur in MS as well¹⁴.

In this work, we want to focus on the molecular origin of these structural instabilities in biosynthetic model membranes with native- and disease-like lipid composition and their interaction mechanism with MBP. We used model membranes mimicking the cytoplasmic membrane composition as MBP can only be found between the cytoplasmic leaflets. We observed significant differences of native and diseased myelin membranes and a different interaction mechanism with MBP emerges in both cases. Based on our results we suggest how small differences in lipid composition between the native and EAE modified myelin membranes can lead to such drastic changes of membrane stability that are presumably relevant for the MS disease in vivo.

Results and Discussion

Membrane structure and MBP-mediated assembly

In the scope of this work we have chosen to work with large unilamellar vesicles (LUV) consisting of lipid compositions as found in native or EAE modified cytoplasmic myelin since they are a well defined biomimetic model system with known geometry. The first part of our experimental study focusses on the structural properties of LUV with native and EAE-mimicking lipid composition and their aggregation process triggered by MBP. Small-angle neutron scattering (SANS) was measured on the small-angle diffractometer KWS-2²¹ and synchrotron small-angle x-ray scattering (SAXS) was recorded on the SWING beamline²². Cryo-transmission electron microscopy (cryo-TEM) was used in addition to obtain a direct visualisation of the investigated samples in real-space. In Fig. 1 a) SANS and SAXS data as well as cryo-TEM images of vesicles with native lipid composition are shown and in Fig. S1 the respective data for EAE modified liposomes is given. In the cryo-TEM images we can see, that we obtain LUV, which sometimes entrap smaller LUV. However, the SANS and SAXS data of the vesicles can be fitted simultaneously with a simple liposome box model described in the SI 3.1. The scattering length density (SLD) value of the buffer inside the LUV seems to differ slightly from the buffer outside. This could be caused by the small vesicles that sometimes are enclosed by the larger ones as can be seen in the cryo-TEM pictures. Otherwise, we only need to fit the size distribution (radius $R \pm$ gaussian standard deviation of the size distribution dR) of the vesicles and the hydration (buffer penetration) h of the head section. Both lipid compositions roughly have the size distribution 50 ± 15 nm. The obtained values of the free SAS fit parameters are compiled in Tab. S1 and demonstrate the monodispersity of our LUV samples for both membrane compositions with membrane properties previously identified for supported bilayers.

When MBP is added to the LUV solutions the SANS and SAXS profiles change significantly. The emergence of two correlation peaks can be observed accompanied by a shift of the Guinier regime to smaller q -values. These can be observed in Fig. 1 b) for LUV with native lipid composition and in Fig. S1 c) for modified membranes. In both cases we see an increase of the radius of gyration R_g (given in figures) of more than an order of magnitude. We suspect this effect to be linked to the formation of large aggregates observed in the inset of Fig. 1 b) for native membranes and in Fig. S1 d) for modified membranes. Here, we added MBP with a 16.7 wt. ratio of MBP in the SAS measurements and 40 wt. ratio in the cryo-TEM. To be sure that the aggregation happens not due to crowding effects we also measured SANS of pure native and EAE modified vesicles at a high concentration of 25 mg/ml (Fig. S4). We could not observe any aggregation. We define the wt. ratio in the following as the weight percentage of the protein divided by the sum of the protein plus the lipids. Cryo-TEM pictures in real-space, see inset Fig. 1 b) for native composition and Fig. S2 b) for LUV with modified composition, directly show that the observed structural changes can be related to LUV aggregation. This is in accordance to the literature where aggregation of charged lipids in the presence of MBP was observed²³. We investigated this assembly process of the LUV further by SAXS measurements in the solution state using the in-house SAXS instrument GANESHA.

As a first step, the MBP concentration was varied, while the LUV concentration was kept constant. Obtained SAXS data of LUV with native and EAE-modified lipid composition - with different wt. ratios of MBP - are shown in Fig. 1 c) and 1 d). The following MBP weight ratios were added to those LUV solution: 9, 16.7, 28.6 and 50 wt. ratio. SAXS was measured after mixing. We observe an emerging peak at $q_1 \sim 0.07 \text{ \AA}^{-1}$ which increases and is shifted slightly to smaller q with increasing MBP concentration. We also observe a second peak at $q_2 = 0.16 \text{ \AA}^{-1}$. The occurrence of the peaks can be explained by an inter-vesicle correlation in the LUV aggregation process, which is stronger for the modified EAE lipid composition as the correlation peaks are more pronounced in Fig. 1 for the modified membranes. The correlation is a mostly bi-lamellar correlation between the vesicles touching each other in the aggregates. The difference of rapid LUV aggregation might be due to the slightly higher amount of charged phosphatidylserine (PS) in EAE modified membranes (PS 7.4 %) as compared to the native lipid composition (PS 7.0 %). To fit these SAXS curves we modify the LUV model by adding a multilamellar vesicle (MLV)

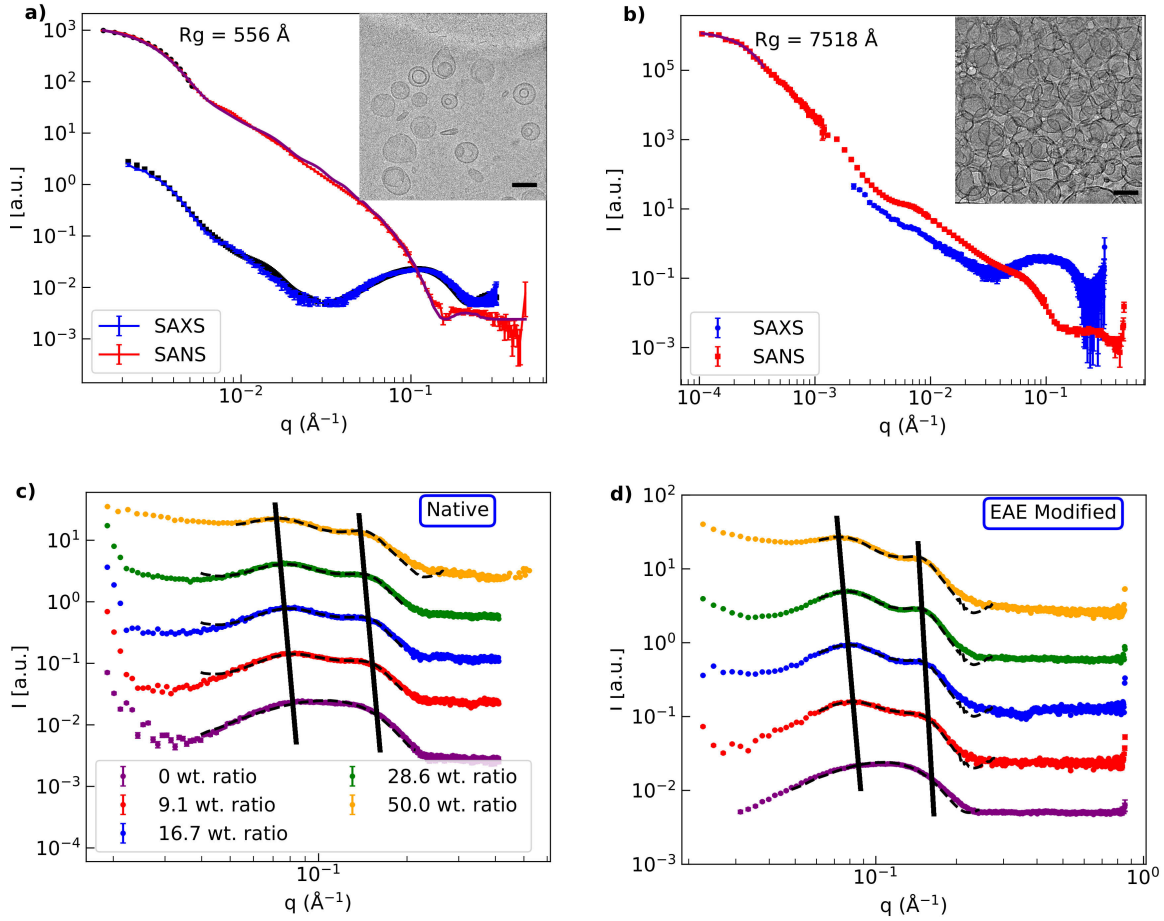


Figure 1. **a)** SANS, synchrotron SAXS and cryo-TEM of native liposomes in absence of MBP. The SANS and SAXS data have been globally fitted with a simple box model. The fits are indicated by continuous lines. **b)** SANS and synchrotron SAXS of native liposomes with 16.7 wt. ratio MBP and cryo-TEM of native liposomes with 40 wt. ratio MBP. The lipid concentration of the SANS measurements was 2.5 mg/ml, in synchrotron SAXS 5 mg/ml and in cryo-TEM 1 mg/ml. The concentration in SAXS was chosen higher for intensity reasons and the concentration of cryo-TEM lower as the blotting process increases the intensity again. The black bar in the cryo-TEM images corresponds in each case to 100 nm. In **c)** and **d)** SAXS data of native and EAE modified liposomes with MBP (9, 16.7, 28.6 and 50 wt. ratio) has been fitted globally by a LUV + MLV model in the region of interest. SAXS data with 0 wt. ratio MBP were fitted with the LUV model. The lipid concentrations in the SAXS measurements without MBP was 10 mg/ml and with MBP 5 mg/ml. Here, the global fit parameters of SAXS and SANS measurements of the respective lipid compositions are used for the LUV part of the model. These fits are indicated by the dashed black lines in the respective plots. For better visibility the different datasets in **c)** and **d)** have been vertically shifted.

fraction:

$$I(q) = c + A \cdot [(1 - \Phi)I_{\text{LUV}}(q) + \Phi I_{\text{MLV}}] \quad (1)$$

Here I is the respective scattering intensity, c is a constant background, Φ is the MLV fraction. We used a LUV + MLV model as we can see in the cryo-TEM that we have aggregation but also free vesicles in these samples. The aggregates are not really MLV but in the local vicinity of the single vesicles they touch other vesicles, so that both their bilayers form a double bilayer which is also described by the MLV model (See number of bilayers $N = 2$ (Tab. S2/S3). Only a small part of the vesicles has more than 2 bilayers (Gaussian sigma $dN=0.5$). Those are accounted to the not perfectly unilamellar vesicles in the sample (inset Fig. 1a). If those vesicles are in the aggregate more than two bilayers can be touching each other. The model is explained in more detail in the SI 3.2. The fits are shown as dashed black lines in Fig. 1 c) and d). All fit parameters are summarized in Tab. S2/S3.

The thickness of the MBP-layer increases from $d_{\text{MBP}} = 35 \text{ \AA}$ to $d_{\text{MBP}} = 39 \text{ \AA}$ in the native case and from $d_{\text{MBP}} = 33.5 \text{ \AA}$ to $d_{\text{MBP}} = 37 \text{ \AA}$ in the EAE modified case when increasing the wt ratio from 9 to 50%. This can be explained with an increase of the amount of MBP between the bilayers with increasing MBP weight ratio. Φ is in the modified case higher than in the native one and in both cases increases with the MBP concentration, see Fig. 2. We can conclude that the rapid aggregation mechanism

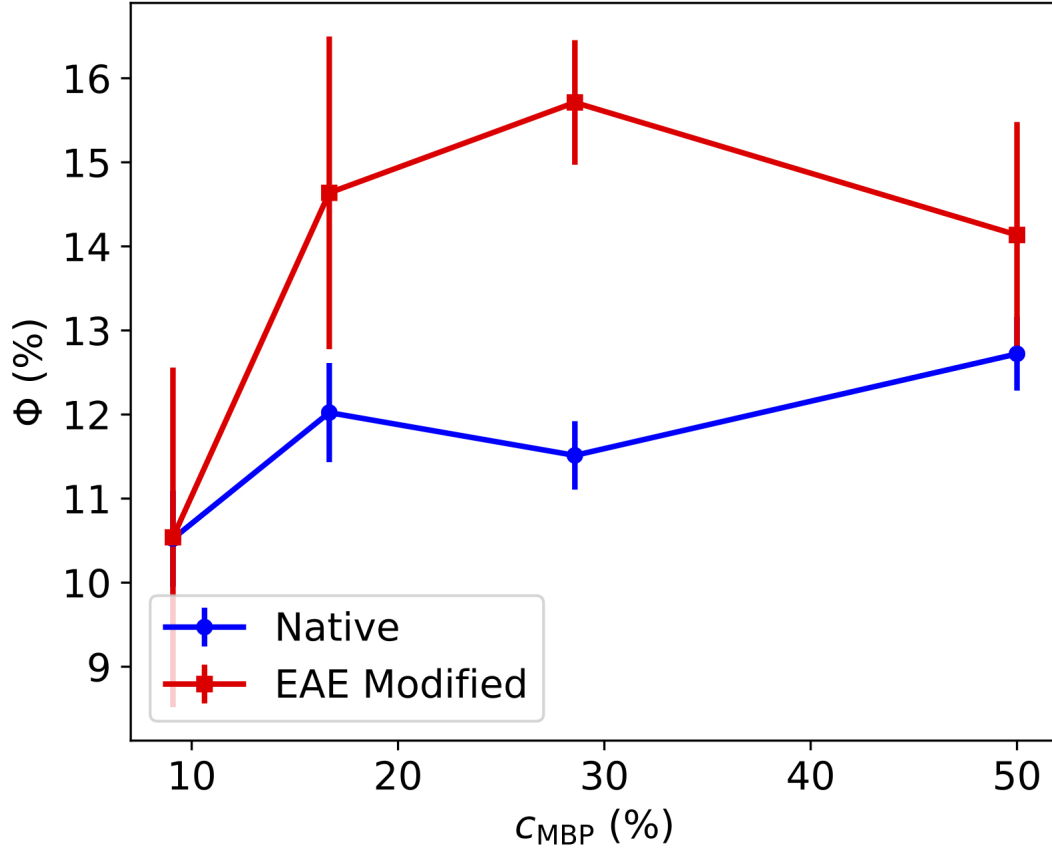


Figure 2. MLV fraction of the fits of native and EAE modified liposomes with MBP (9, 16.7, 28.6 and 50 wt. ratio).

is similar for native and EAE modified LUV but stronger in the latter case. After the first rapid aggregation, we could identify a slower secondary process during which the organisation of the LUV changes further. The secondary process was followed with SAXS and cryo-TEM as a function of incubation time. In detail, MBP was added with a concentration of $c_{\text{MBP}} = 1 \text{ mg/ml}$ to a LUV solution with a concentration of $c_{\text{LUV}} = 5 \text{ mg/ml}$. Then SAXS and cryo-TEM were measured at different time points after mixture. The normalized SAXS data is shown in Fig. 3 a) for native LUV and in Fig. 3 b) for EAE modified liposomes. The LUV + MBP sample of the initial state (0 days) was prepared freshly just before the SAXS measurement, while samples with different incubation time (2, 4, 6 and 8 days) were prepared ahead of the experiment. Directly after mixing, MBP leads to rapid aggregation of the vesicles. This can be seen most clearly in cryo-TEM (Fig. S2). Afterwards, further structural rearrangement occurs slowly within a few days. For the modified LUV mimicking EAE conditions no structural change is observed as the SAXS peak profile does not change with time in Fig. 3 b). However, for the native liposomes (Fig. 3 a) the secondary slow structural change is significantly stronger as both the first and second SAXS peak are getting more pronounced. This is an indication that the lamellar stacking is getting more regular or that more consecutive layers are formed (Fig. S3). For the fit we again utilize the LUV + MLV model described in the SI 3.2. The fit parameters are given in Tab. S4/S5. The difference between native and EAE modified lipid composition is on the one hand that Φ increases - accounting for the formation of multilamellar structure - only in the native case as the aging proceeds and on the other hand that the polydispersity dN increases for the native case - meaning that more membranes with a number of layers $N_{\text{MLV}} > 2$ are in the sample which is shown in Fig. 4. In the EAE modified case $N_{\text{MLV}} > 2$ stays stable at $\sim 2\%$. However, in the native case $N_{\text{MLV}} > 2$ clearly increases (0 days: $\sim 1.5\%$, 8 days: $\sim 6\%$). This is an additional indication that the secondary process only occurs for the native membranes. The cryo-TEM

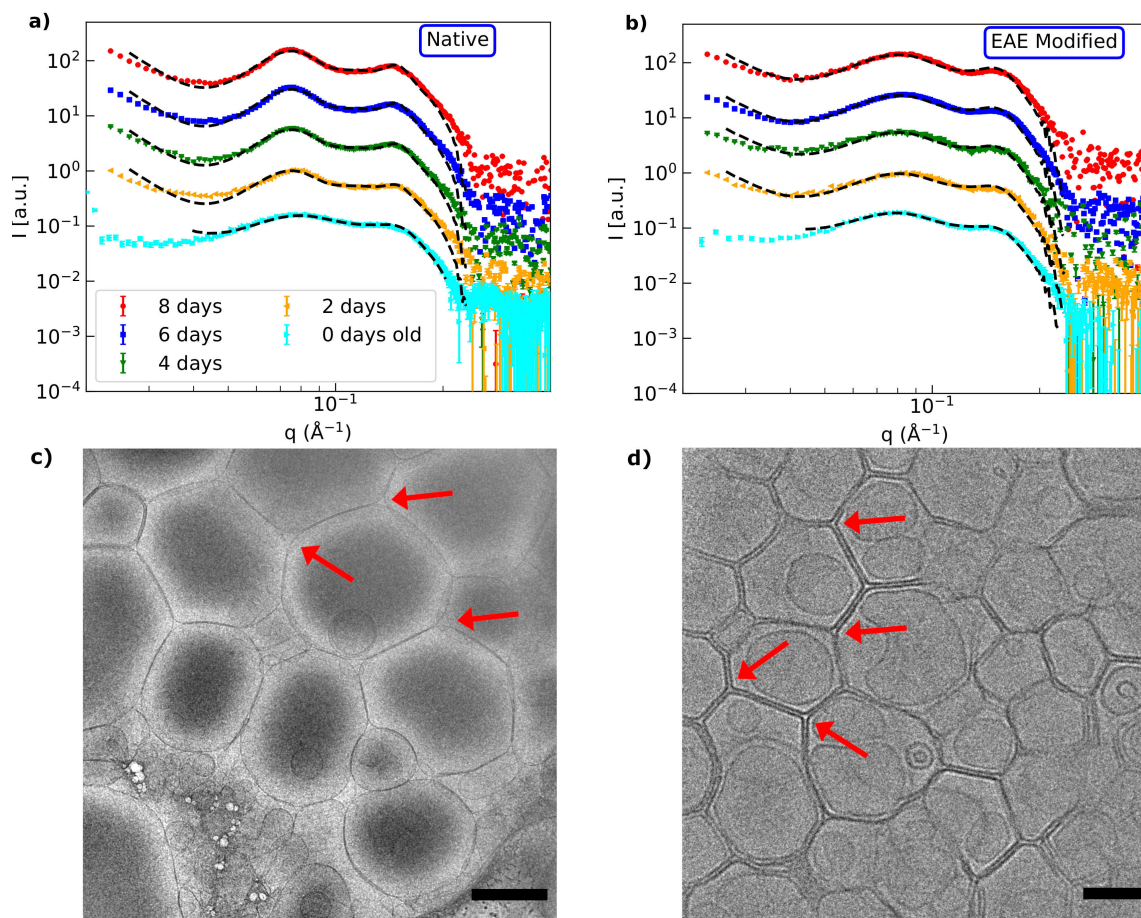


Figure 3. Kinetics of MBP-mediated assembly process followed by SAXS. SAXS data of **a)** native and **b)** EAE modified membranes mixed with 16.7 wt. ratio MBP 0, 2, 4, 6 and 8 days before the measurement. In **c)** and **d)** cryo-TEM pictures of aged native (5 days) and EAE modified (6 days) liposomes with 16.7 wt. ratio MBP are shown. The black bar in **c)** corresponds to 500nm and in **d)** to 100nm. For better visibility the different datasets in **a)** and **b)** have been vertically shifted. In **c)** some of the rounded edges and in **d)** some of the sharp edges have been marked by red arrows. The samples for SAXS and cryo-TEM were taken from the same batch for better comparison and had a lipid concentration of 5 mg/ml.

pictures of aged native liposomes show the formation of giant unilamellar vesicles (GUVs) with partially strongly multilamellar structures (Fig. 3 c)), while the cryo-TEM of modified membranes (3 d)) shows LUVs stuck to each other but with the original vesicle diameter of around 100nm. Therefore, structural changes probed by kinetic SAXS experiments can be identified to the formation of multilamellar structure that occurs for LUV with native membrane composition but not for EAE modified membrane composition. In this section, we showed how the liposomes of native and EAE modified lipid composition form different structures when brought in contact with MBP. As we will demonstrate in the following section, these differences can be explained to a large amount by consideration of the bending rigidity of both membranes.

Membrane bending rigidity

One important property of membranes is their elastic behavior, which is described by the Helfrich Hamiltonian²⁴. This Hamiltonian is governed by the bending rigidity κ and the spontaneous curvature c_0 . In our case we work with bilayers with symmetrical lipid composition of cytoplasmic myelin leaflets. In this case the spontaneous curvature is negligible and the elastic behaviour is largely governed by the bending rigidity κ . To measure the membrane bending rigidity κ we rely on neutron spin echo (NSE) spectroscopy since it has the right time resolution to follow membrane fluctuations. NSE has demonstrated the capability to measure membrane stiffness and bending fluctuations^{25–27}. NSE measurements reported here have also been performed on LUV with native and EAE modified lipid composition at a concentration of 25 mg/ml. To check unilamellarity

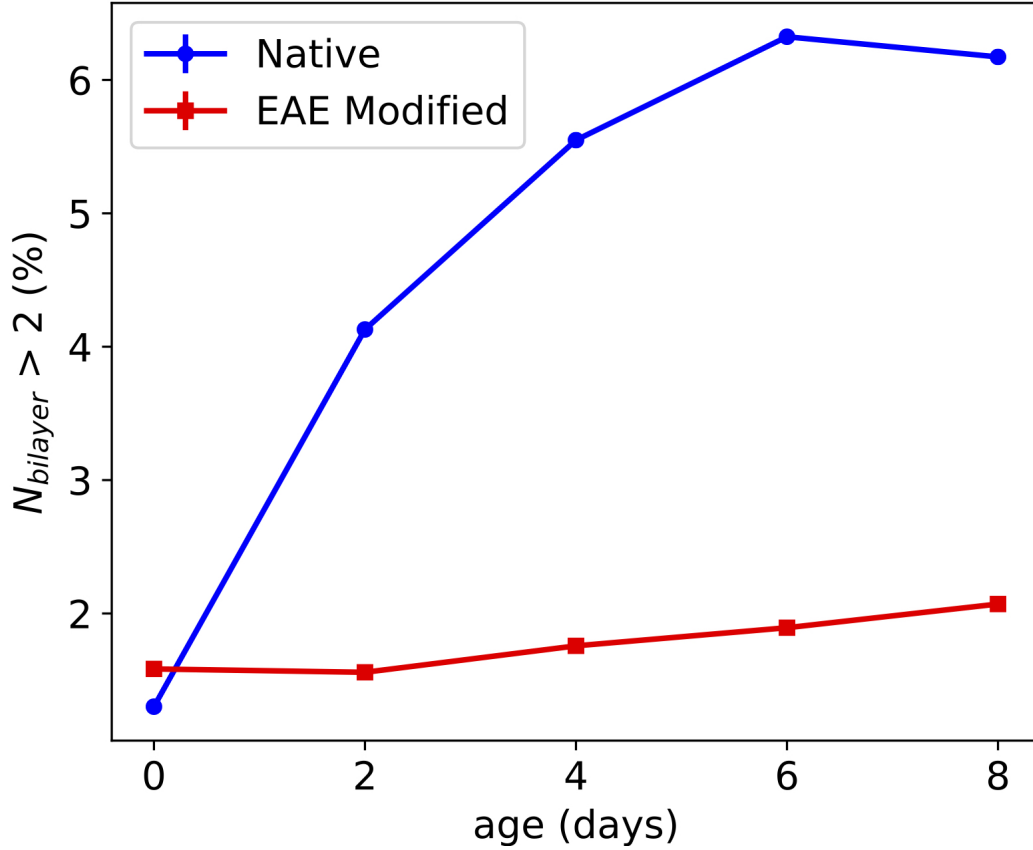


Figure 4. Number fraction of multilayers with a number of bilayers $N > 2$ in aging vesicles of native and EAE modified composition. The values have been extracted from the LUV + MLV fit shown in Fig. 3.

we performed additionally SANS and SAXS measurements on exactly the same samples. Those SANS/ SAXS data are shown in Fig. S4 together with the structure factor $S(q)$ calculated by dividing the SANS data of the NSE samples of 25 mg/ml by the SANS data of the NSE samples diluted to 2.5 mg/ml. As we can see the structure factor is in the NSE q -area $S(q) = 1$. Therefore, it can be neglected in the following analysis. As the SANS/SAXS data can be fitted by the LUV model in the SI 3.1, we could confirm that we have unilamellar vesicles. Since liposomes of 100 nm diameter are quasi-flat on a molecular scale we can employ the Zilman-Granek model²⁸ for phospholipid bilayer membrane undulations combined with center of mass diffusion.

$$S(q, \tau)/S(q) = A \cdot \exp(-D_0 q^2 \tau) \exp\left((- \Gamma \tau)^{2/3}\right). \quad (2)$$

A is a scaling factor, D_0 is the diffusion constant, τ is the Fourier time and Γ is the relaxation rate which is defined as the following for Zilman-Granek

$$\Gamma = 0.025 \gamma (\kappa/k_B T)^{-0.5} \frac{k_B T}{\eta} q^3. \quad (3)$$

Here, γ is function of $\kappa/k_B T$ which approaches unity for $\kappa/k_B T \gg 1$, κ is the bending rigidity and η the viscosity of the solvent. It has been shown that for NSE measurements the internal friction has to be considered so that κ has to be replaced by $\tilde{\kappa} = \kappa + 2d^2 k_m$ ²⁹. Here, d is the monolayer thickness and k_m is the compressibility module of the monolayer. However, this can also be simulated roughly by a effective viscosity of D₂O $\eta_{\text{eff}} = 4\eta_{\text{D}_2\text{O}}$ ^{30,31}. Since it is our goal to compare the native and modified κ and not to estimate precise values of κ this approximation is reasonably good.

The diffusion coefficient is calculated by the Stokes-Einstein equation with the vesicle radius of 50 nm. An exemplary NSE

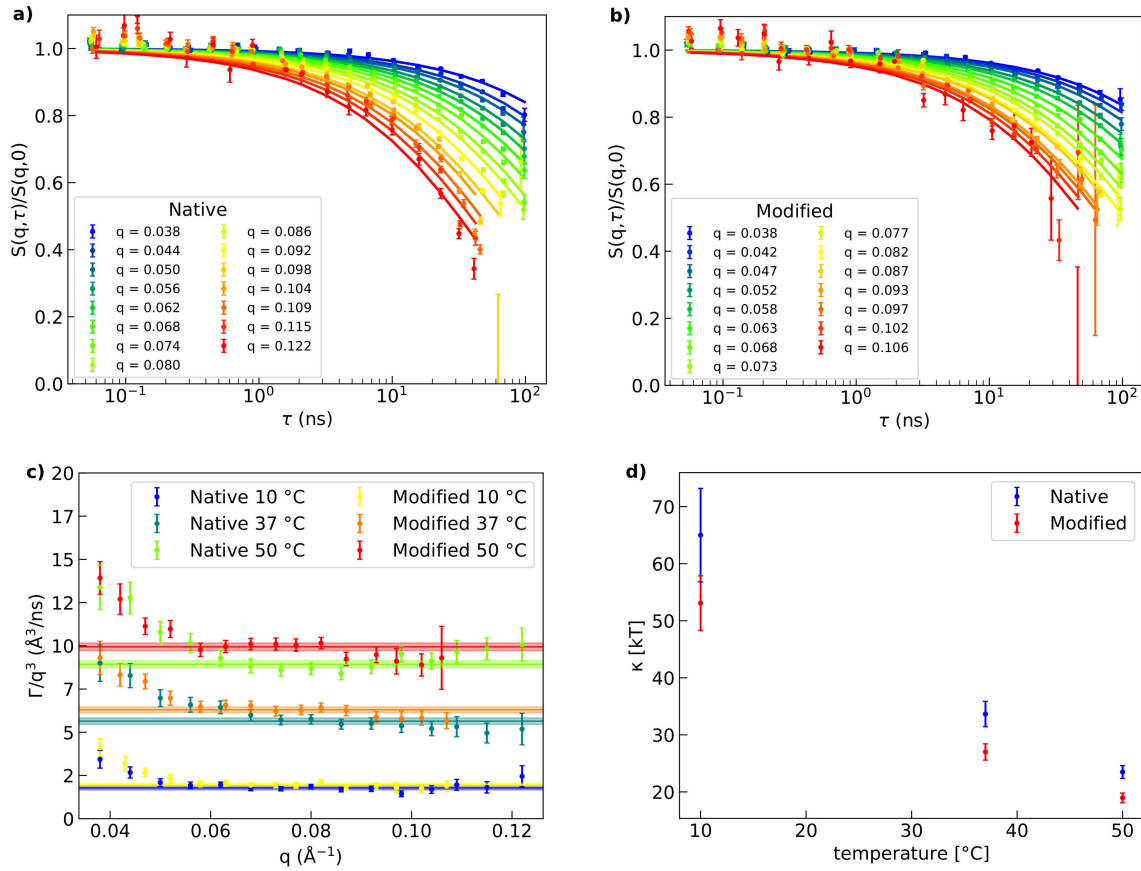


Figure 5. Dynamics of LUV bending fluctuations measured by NSE and determination of bending rigidity. NSE data of **a)** native and **b)** EAE modified liposomes at 50°C. The solid lines of the respective color show the respective fit with Zilman-Granek + center of mass diffusion model for each q -value. In **c)** the fit parameter Γ/q^3 is plotted against q and fitted with a constant for each temperature and composition. The fit is indicated as a solid line in the respective color and its standard error by the thickness of the slightly transparent enveloping lines. In **d)** the bending rigidity κ calculated of the Γ/q^3 fit values is plotted over the temperature for native and EAE modified lipid composition.

measurement of each lipid composition is shown in Fig. 5 a) for native and Fig. 5 b) for EAE modified membranes. The respective fit is shown as solid line. We measured NSE at 3 temperatures 10°C, 37°C and 50°C (Fig. 5 and Fig. S5). From each Zilman-Granek fit of each q -value we can calculate the factor Γ/q^3 . When plotted against q this should give a constant (Fig. 5 c). We can see that for small q -values our data deviates from a constant. This can be explained by the fact that for these values we observe almost no relaxation and therefore the fit is not reliable. Therefore, the first few q -values, where the values deviate strongly from a constant are neglected in the following fit. The fit of the constant area of Γ/q^3 is plotted as a solid line with an error band highlighting the standard error of those fits in Fig. 5 c). From Γ/q^3 we can now calculate κ using Eq. 3. The obtained values of the bending rigidity with error are shown in Fig. 5 d). As we can see the bending rigidity decreases with the temperature and the rigidity of native membranes is continuously around 25% higher than those of the EAE modified membranes at all temperatures. From previous studies it is known that by adding cholesterol to a membrane the bending rigidity is increased, which is not the case here (Native: 31.6 %, EAE: 37.4 % cholesterol)^{25,32}. We also know that unsaturated lipids decrease the bending rigidity as they introduce disorder in the system. Therefore, the decrease of sphingomyelin in the EAE modified membrane - which is mostly saturated - should decrease its bending rigidity (Native: 6.2 %, EAE: 2.2 % sphingomyelin). In conclusion, despite of the higher amount of cholesterol in the EAE membrane, the decrease of sphingomyelin content seems to be the major driving force for the overall reduction of the bending rigidity. A higher bending rigidity can be connected to structural properties of membranes as rigid membranes try to minimize their local curvature²⁴. This leads to two effects that we can observe in cryo-TEM measurements of aged LUV incubated with MBP in Fig. 3 c) and 3 d). Firstly, native vesicles show the tendency to fuse and form giant vesicles with a diameter of around 1 μ m while modified membranes stay at the extrusion diameter of 100nm. Since larger vesicles have a lower curvature this is

only happening for the rigid native vesicles. The EAE modified vesicles form sharp edges between 3 vesicles. This happens probably to maximise contact area between the membranes with the protein contact in between. Those edges have of course an extremely high curvature. Therefore, native membranes avoid these sharp edges and form rounded edges with buffer in the gap despite also being attracted by the positive charge of the MBP as the opposing bending force gets too strong, which results in the formation of GUV and multilamellar structure. As we have shown above the interaction of MBP with even such a simple system as biomimetic vesicles is quite complicated and leads to heterogeneous structures. To understand the basic interaction of the protein with the membrane lipids we focus in the next section on the simpler geometry of the supported bilayer.

MBP membrane insertion

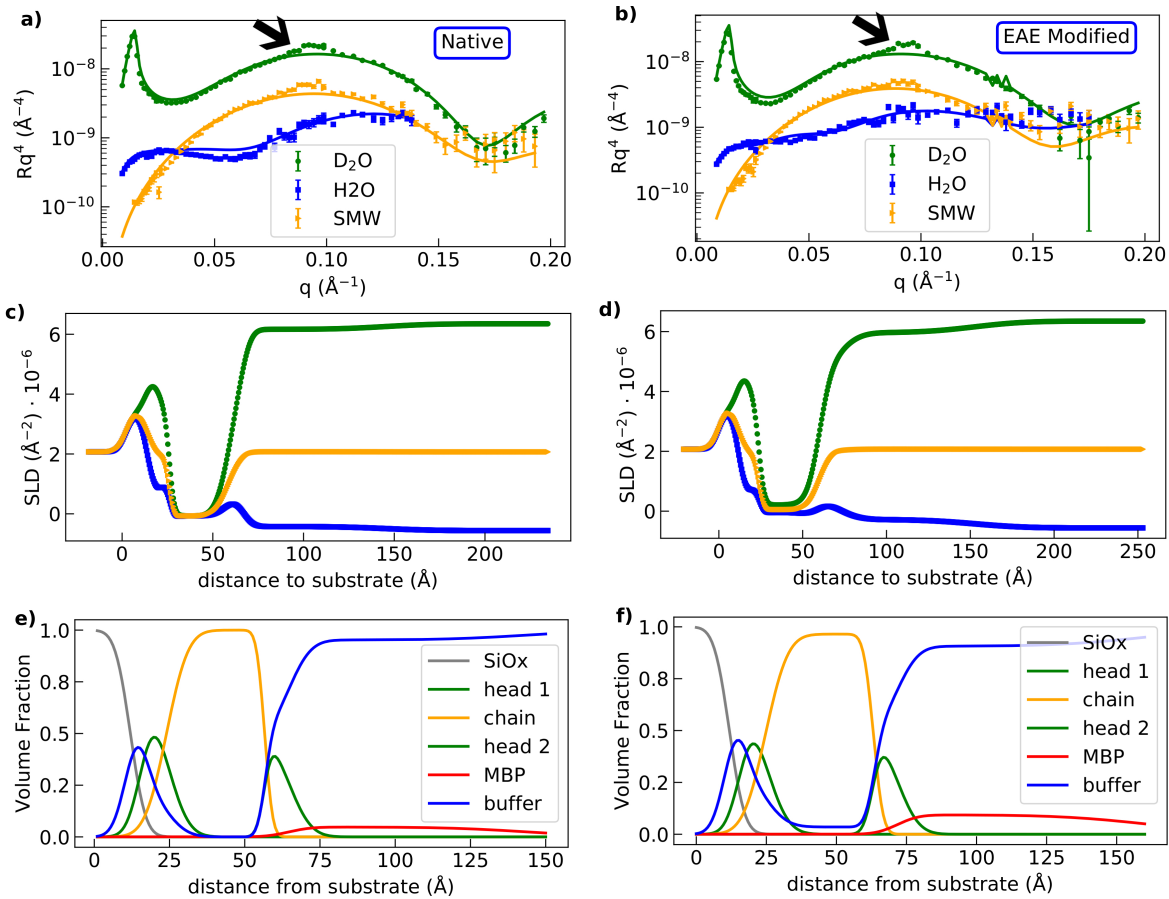


Figure 6. Determination of membrane profile of oriented bilayers by NR. NR data of **a)** native and **b)** EAE modified membranes with MBP. Each dataset with the 3 contrasts D₂O, H₂O and silicon matched water (SMW) have been fitted globally. These fits are indicated by the solid lines in the respective color. Furthermore, the SLD profile of **c)** native and **d)** EAE modified membranes with MBP, which is calculated from the fits, is shown. The volume fractions over the distance from the different parts of the membrane are shown **e)** for the native membrane and **f)** for the EAE modified membrane.

In form of a supported bilayer the membrane is fixed to a substrate and, therefore, no aggregation effects like in the measurements using LUV can occur. This allows a precise measurement of the vertical membrane layer structure by neutron reflectometry (NR), which is very sensitive for changes induced by MBP binding. In particular, how MBP binding differs for both lipid compositions. The NR method has been used before to investigate interaction of membranes with protein or peptides, see e.g. ^{20,33–35}. NR was measured for both native and EAE modified membrane compositions at the neutron reflectometer MARIA³⁶. To form a supported bilayer on the silicon substrate the so-called vesicle fusion is utilized. In this process the vesicles fuse on the strongly hydrophilic SiO surface of the substrate and form a continuous bilayer. To make this process happen we inject vesicles in the liquid cell with the silicon substrate and wait for 15 minutes at a temperature of 50 °C. The so-formed supported bilayers were measured at the three different contrasts H₂O, D₂O and silicon matched water (SMW) (38% D₂O) (Fig. S6). These NR curves do not differ in the precision of our measurements between the bilayers with native and EAE modified lipid composition. This is not surprising since both membranes have a similar composition with a large

amount of cholesterol, which should stabilize an ordered liquid phase³⁷. They could be fitted with a simple stratified layer system with the layer order Si/SiOx/buffer/head/2-chains/head/buffer using the Abeles matrix formalism. All fits have been performed with motofit³⁸. In the following, MBP was added and again NR at the same contrasts was measured. The NR

Table 1. Thicknesses d_i and hydration (buffer penetration) h_i of head chain and MBP sections of native and EAE modified supported bilayers measured by neutron reflectometry with and without MBP. Here, i stands for head, chain or MBP

	nat	nat + MBP	EAE	EAE + MBP
d_{head} (Å)	8.0±0.4	8.0±0.4	8.1±0.4	8.1±0.4
d_{chain} (Å)	33±2	32.6±0.2	31±2	35.8±0.3
d_{MBP} (Å)	0	84±3	0	80±5
$h_{\text{head,inner}}$ (%)	31±2	25±2	33±2	31±5
h_{chain} (%)	0	0	0	3.5±1.1
$h_{\text{head,outer}}$ (%)	31±2	47±1	33±2	48±1
h_{MBP} (%)	0	95±1	0	91±2

curves in Rq^4 vs q and the SLD profiles of native (Fig. 6 a), 6 c) and 6 e)) and EAE modified (Fig. 6 b), 6 d) and 6 f)) show a quite different behaviour when MBP is added and incubated for 15 minutes before flushing the liquid cell with buffer (Fig. S7). The NR curves with protein at a concentration of 0.1 mg/ml were fitted simultaneously with a simple stratified layer membrane model as shown before but with an additional MBP layer on top of the membrane. Therefore, the resulting layer order is Si/SiOx/buffer/head/2-chains/head/MBP/buffer. The fit results are given in Tab. 1. The density profile of the native membrane with bound MBP is similar to the membrane without protein. A $d_{\text{MBP}} \sim 80$ Å MBP layer is formed on top and there seems to be almost no protein and buffer insertion in the membrane. The thickness of the MBP layer $d_{\text{MBP,NR}} \sim 80$ Å is larger than the thickness of the MBP layers measured between the membranes in our SAXS measurement of multilamellar vesicles ($d_{\text{MBP,SAXS}} \sim 30$ Å). This is in accordance to the $d_{\text{MBP,in vivo}} = 30$ Å observed in fresh mammalian myelin sheath³⁹ and with the MBP-layer thickness observed in similar model systems¹⁴ but still smaller than the maximal length of a fully disordered MBP molecule²⁰. To explain this, two models have to be considered which have already been suggested in literature^{20,40}. One possibility is that the proteins fold at the side attached to the membrane, but stay disordered on the other side leading to a brush-like structure²⁰. The second possibility is that further MBP molecules are attached to the first folded protein stack to build up the thicker protein layer^{40–43}. This can be explained by a mechanism similar to a liquid-liquid phase separation: The process is initiated by folding and attachment of the MBP molecules in direct contact with the membrane and further growth due to MBP binding. Here, the trigger is a heterotypic interaction of MBP with the negatively charged membranes. Due to the higher local protein concentration, further MBP layers can be added yielding the concentrated top layer via homotypic MBP interactions. However, further experiments with MBP and interaction partners are needed to differentiate between those models. For the EAE modified membrane, however, we can fit the data only by adding buffer insertion and swelling of the membrane ($h_{\text{chain}} = 3.5\%$) and also a roughly 80 Å MBP layer on top. The $d_{\text{MBP}} \sim 80$ Å thickness of this layer is very similar to the layer thickness measured before for MBP on DMPC:DMPG membranes²⁰. To explain these results we argue that it is necessary for the MBP to partially penetrate the chain section of the layer due to a stronger MBP-EAE membrane interaction than that it is the case for the native membrane. Therefore, water can enter the hydrophobic membrane section. In addition, holes might be formed in the bilayer by partial folding of lipids around the MBP molecules in their vicinity which could lead to destabilization of the EAE membrane bilayer. We also observe a small peak at $q = 0.095 \text{ Å}^{-1}$ for both membranes (marked by black arrow in Fig. 6 a) and b)). We suspect that this is the lamellar peak which is also caused by folding of the negatively charged lipid bilayer around the positively charged MBP. This effect also seems to be stronger for EAE modified membranes, which is reasonable since the MBP concentration on top of the modified membrane measured with NR seems to be substantially higher leading to water insertion in the membrane. With the results of the fitted NR data given in Tab. 1 we can calculate the surface excess Γ and area per protein A_p for both lipid compositions. From⁴⁴ we know that:

$$\Gamma = \Phi_p \cdot \tau \cdot \rho'_p. \quad (4)$$

Here Φ_p is the volume fraction of the protein which is $1 - h$, τ is the thickness of the protein layer and $\rho'_p = M/V$ is the protein density. The molecular mass of the bovine MBP isoform is $M = 18.4$ kDa and the molecular volume is roughly $V = 36 \text{ nm}^3$ ³⁴⁵. For MBP $\rho'_{\text{MBP}} = 0.51 \text{ Da/Å}^3$. We can now calculate the area per protein:

$$A_p = \frac{M}{\Gamma}. \quad (5)$$

The values for native and modified membranes are $\Gamma_{\text{nat}} = 0.356 \pm 0.071 \text{ mg/m}^2$, $\Gamma_{\text{EAE}} = 0.61 \pm 0.14 \text{ mg/m}^2$, $A_{p,\text{nat}} = (8.6 \pm 1.7) \cdot 10^3 \text{ Å}^2$ and $A_{p,\text{EAE}} = (5.0 \pm 1.5) \cdot 10^3 \text{ Å}^2$. The NR data of oriented bilayers revealed differences in the

interactions of both lipid compositions with MBP and the formation of a concentrated roughly 80 Å thick MBP layer on top. For the EAE membrane the surface excess of MBP is twice as high (0.61 mg/m²) indicating stronger MBP binding as compared to native layers (0.36 mg/m²). Our experimental NR results identify strong MBP binding of biomimetic EAE model membranes as molecular origin that prevents formation of multilamellar structures of LUV and, thus, might impede formation of well-ordered myelin sheaths in MS disease.

Conclusions

We investigated the interaction of MBP with LUV having native and EAE modified lipid compositions and the resulting assembly process of the liposomes. Binding of MBP to LUV with modified EAE membranes was found to be stronger than for native membranes leading to a higher tendency for aggregation of EAE-mimicking LUV as compared to native-like liposomes. While for EAE modified membranes the vesicles remain stable in this aggregated state, native vesicles undergo a secondary reordering process in the time range of several days during which LUV fuse and significant amount of multilamellar structure is formed. Investigations on the bending fluctuations of the LUV identified a higher bending rigidity of liposomes with native lipid composition than for EAE modified membranes. Further experiments have been performed with oriented bilayers. Here, for both lipid compositions a concentrated protein layer is formed on top of the membranes. The surface excess of MBP on top of membrane with EAE lipid composition is higher than for the native lipid composition showing stronger MBP interactions with diseased membranes that result in structural perturbation of the membranes - which manifests itself in swelling of the membrane and in buffer insertion in the hydrocarbon-section of the membrane. This strong MBP-membrane interaction in combination with the low bending rigidity can be identified as a molecular trigger, which destabilizes EAE modified membranes and prevents the formation of multilamellar structure. We suggest that this mechanism acting on the molecular scale might prevent the generation of myelin sheath-like membrane systems under in vivo conditions as well. Our studies provide a molecular explanation of the destabilisation of the membrane structure observed in MS mouse model system EAE. However, not only modification of lipid composition, but also properties of the protein component - such as by e.g. posttranslational modifications of MBP - will play here a role. The relevance of modified physico-chemical properties of MBP needs to be investigated in more detail in future studies to understand the interplay of lipid and MBP for the MS disease.

Materials and Methods

Detailed information about Materials and Methods are available in the SI 2.

Materials

Porcine brain lipids and ovine cholesterol was purchased from Avanti Polar Lipids (Alabaster, AL, USA) and bovine MBP from Sigma-Aldrich (St. Louis, MO, USA). Liposomes of native and EAE modified lipid composition have been prepared via extrusion through a 100 nm diameter membrane. In Tab. S6 the lipid compositions of the two membrane types are depicted. To calculate scattering curves of the native and EAE membranes averaged x-ray/neutron scattering length densities (SLDs) of the head and chain sections were used (averaged SLD values given in Tab. S7). For the calculation of these average SLDs the fatty chain length composition of the different lipid molecules (see Tab. S8) was considered. Molar volumes V_m , coherent neutron scattering lengths b_{coh} of their moieties and the neutron and x-ray SLDs of the individual head groups and chain components are given in Tab. S9.

Small angle X-ray scattering

The measurements at the SWING beamline at SOLEIL²² and in-house SAXS measurements at the GANESHA setup were performed in standard quartz capillaries at room temperature.

Small angle neutron scattering

The measurements at the KWS-2 diffractometer²¹ were performed at different sample-detector distances of 2 m to 20 m. Additionally, measurements with neutron focussing lenses have been performed for the very low q -values.

Cryo-TEM

Samples were cryo-fixed in -180 °C liquid ethane. The measurements were also carried out at temperatures around -180 °C. The transmission electron microscope was operated at an acceleration voltage of 200 kV. Zero-loss electron energy filtered images were taken under reduced dose conditions ($< 10000 \text{ e/nm}^2$).

Neutron reflectometry

The measurements at the MARIA neutron diffractometer³⁶ were performed at two neutron wavelengths to cover the relevant q -range. The change of solvent contrast in the liquid cells was performed using a combination of valves and a peristaltic pump, at small flow rates of 0.5 ml/min.

Neutron spin-echo spectroscopy

Measurements were carried out at the SNS-NSE spectrometer⁴⁶. The NSE spectra were collected at 10 °C - 50 °C for samples in 4 mm-path quartz cells, accessing a dynamical range between $0.1 \leq \tau_{max} \leq 130 \text{ ns}$.

References

1. Purves, D. *et al.* *Increased conduction velocity as a result of myelination*, chap. 2 (Sinauer Associates, USA, 2001).
2. Quarles, R. H., Macklin, W. B. & Morell, P. *Myelin formation, structure and biochemistry*, chap. 4, 51–71 (Academic Press, 2006), 7 edn.
3. Boggs, J. M. Myelin basic protein: a multifunctional protein. *Cell. Mol. Life Sci. CMLS* **63**, 1945–1961, DOI: [10.1007/s00018-006-6094-7](https://doi.org/10.1007/s00018-006-6094-7) (2006).
4. Stollery, J. G. & Vail, W. J. Interactions of divalent cations or basic proteins with phosphatidylethanolamine vesicles. *Biochimica et Biophys. Acta (BBA) - Biomembr.* **471**, 372 – 390, DOI: [10.1016/0005-2736\(77\)90043-8](https://doi.org/10.1016/0005-2736(77)90043-8) (1977).
5. Lampe, P. D. & Nelsestuen, G. L. Myelin basic protein-enhanced fusion of membranes. *Biochimica et Biophys. Acta (BBA) - Biomembr.* **693**, 320 – 325, DOI: [10.1016/0005-2736\(82\)90438-2](https://doi.org/10.1016/0005-2736(82)90438-2) (1982).
6. Lampe, P. D., Wei, G. J. & Nelsestuen, G. L. Stopped-flow studies of myelin basic protein association with phospholipid vesicles and subsequent vesicle aggregation. *Biochemistry* **22**, 1594–1599, DOI: [10.1021/bi00276a011](https://doi.org/10.1021/bi00276a011) (1983).
7. Maggio, B. & Yu, R. K. Interaction and fusion of unilamellar vesicles containing cerebrosides and sulfatides induced by myelin basic protein. *Chem. Phys. Lipids* **51**, 127 – 136, DOI: [10.1016/0009-3084\(89\)90046-7](https://doi.org/10.1016/0009-3084(89)90046-7) (1989).
8. Haas, H. *et al.* Myelin model membranes on solid substrates. *Thin Solid Films* **327-329**, 627 – 631, DOI: [10.1016/S0040-6090\(98\)00727-5](https://doi.org/10.1016/S0040-6090(98)00727-5) (1998).

9. Polverini, E. *et al.* Interaction of myelin basic protein with phospholipid monolayers: Mechanism of protein penetration. *Langmuir* **19**, 872–877, DOI: [10.1021/la020801a](https://doi.org/10.1021/la020801a) (2003). <https://doi.org/10.1021/la020801a>.
10. Haas, H. *et al.* Laminar order within langmuir-blodgett multilayers from phospholipid and myelin basic protein: A neutron reflectivity study. *Langmuir* **23**, 8491–8496, DOI: [10.1021/la700733y](https://doi.org/10.1021/la700733y) (2007). <https://doi.org/10.1021/la700733y>.
11. Shen, Y., Saboe, P. O., Sines, I. T., Erbakan, M. & Kumar, M. Biomimetic membranes: A review. *J. Membr. Sci.* **454**, 359 – 381, DOI: <https://doi.org/10.1016/j.memsci.2013.12.019> (2014).
12. Marquardt, D., Geier, B. & Pabst, G. Asymmetric lipid membranes: Towards more realistic model systems. *Membranes* **5**, 180–196, DOI: [10.3390/membranes5020180](https://doi.org/10.3390/membranes5020180) (2015).
13. Heberle, F. A. *et al.* Subnanometer structure of an asymmetric model membrane: interleaflet coupling influences domain properties. *Langmuir* **32**, 5195–5200 (2016).
14. Shaharabani, R. *et al.* Structural transition in myelin membrane as initiator of multiple sclerosis. *J. Am. Chem. Soc.* **138**, 12159–12165, DOI: [10.1021/jacs.6b04826](https://doi.org/10.1021/jacs.6b04826) (2016). PMID: 27548321, <https://doi.org/10.1021/jacs.6b04826>.
15. Eicher, B. *et al.* Joint small-angle X-ray and neutron scattering data analysis of asymmetric lipid vesicles. *J. Appl. Crystallogr.* **50**, 419–429, DOI: [10.1107/S1600576717000656](https://doi.org/10.1107/S1600576717000656) (2017).
16. Eicher, B. *et al.* Intrinsic curvature-mediated transbilayer coupling in asymmetric lipid vesicles. *Biophys. journal* **114**, 146–157 (2018).
17. Shaharabani, R., Ram-On, M., Talmon, Y. & Beck, R. Pathological transitions in myelin membranes driven by environmental and multiple sclerosis conditions. *Proc. Natl. Acad. Sci.* **115**, 11156–11161, DOI: [10.1073/pnas.1804275115](https://doi.org/10.1073/pnas.1804275115) (2018). <https://www.pnas.org/content/115/44/11156.full.pdf>.
18. Min, Y. *et al.* Interaction forces and adhesion of supported myelin lipid bilayers modulated by myelin basic protein. *Proc. Natl. Acad. Sci.* **106**, 3154–3159, DOI: [10.1073/pnas.0813110106](https://doi.org/10.1073/pnas.0813110106) (2009). <http://www.pnas.org/content/106/9/3154.full.pdf>.
19. Min, Y. *et al.* Critical and off-critical miscibility transitions in model extracellular and cytoplasmic myelin lipid monolayers. *Biophys. journal* **100**, 1490–1498, DOI: [10.1016/j.bpj.2011.02.009](https://doi.org/10.1016/j.bpj.2011.02.009) (2011).
20. Raasakka, A. *et al.* Membrane association landscape of myelin basic protein portrays formation of the myelin major dense line. *Sci. Reports* **7**, 4974, DOI: [10.1038/s41598-017-05364-3](https://doi.org/10.1038/s41598-017-05364-3) (2017).
21. Radulescu, A., Szekely, N. K. & Appavou, M.-S. Kws-2: Small angle scattering diffractometer. *J. large-scale research facilities JLSRF* **1**, 29, DOI: [10.1016/j.nima.2012.06.027](https://doi.org/10.1016/j.nima.2012.06.027) (2015).
22. David, G. & Pérez, J. Combined sampler robot and high-performance liquid chromatography: a fully automated system for biological small-angle X-ray scattering experiments at the Synchrotron SOLEIL SWING beamline. *J. Appl. Crystallogr.* **42**, 892–900, DOI: [10.1107/S0021889809029288](https://doi.org/10.1107/S0021889809029288) (2009).
23. Boggs, J. M. & Moscarello, M. A. Effect of basic protein from human central nervous system myelin on lipid bilayer structure. *The J. Membr. Biol.* **39**, 75–96, DOI: [10.1007/BF01872756](https://doi.org/10.1007/BF01872756) (1978).
24. Helfrich, W. & Kozlov, M. Bending tensions and the bending rigidity of fluid membranes. *J. de Physique II* **3**, 287–292 (1993).
25. Arriaga, L. R. *et al.* Stiffening effect of cholesterol on disordered lipid phases: a combined neutron spin echo+ dynamic light scattering analysis of the bending elasticity of large unilamellar vesicles. *Biophys. journal* **96**, 3629–3637 (2009).
26. Woodka, A. C., Butler, P. D., Porcar, L., Farago, B. & Nagao, M. Lipid bilayers and membrane dynamics: insight into thickness fluctuations. *Phys. review letters* **109**, 058102 (2012).
27. Nickels, J. D. *et al.* Mechanical properties of nanoscopic lipid domains. *J. Am. Chem. Soc.* **137**, 15772–15780 (2015).
28. Zilman, A. & Granek, R. Undulations and dynamic structure factor of membranes. *Phys. review letters* **77**, 4788 (1996).
29. Watson, M. C. & Brown, F. L. Interpreting membrane scattering experiments at the mesoscale: the contribution of dissipation within the bilayer. *Biophys. journal* **98**, L9–L11 (2010).
30. Takeda, T. *et al.* Neutron spin-echo investigations of membrane undulations in complex fluids involving amphiphiles. *J. Phys. Chem. Solids* **60**, 1375 – 1377, DOI: [https://doi.org/10.1016/S0022-3697\(99\)00122-5](https://doi.org/10.1016/S0022-3697(99)00122-5) (1999).
31. Farago, B., Monkenbusch, M., Goecking, K., Richter, D. & Huang, J. Dynamics of microemulsions as seen by neutron spin echo. *Phys. B: Condens. Matter* **213**, 712–717 (1995).
32. Martinez, G. V., Dykstra, E. M., Lope-Piedrafita, S., Job, C. & Brown, M. F. Nmr elastometry of fluid membranes in the mesoscopic regime. *Phys. Rev. E* **66**, 050902 (2002).

33. Rondelli, V. *et al.* Amyloid- β peptides in interaction with raft-mime model membranes: a neutron reflectivity insight. *Sci. reports* **6**, 20997, DOI: [10.1038/srep20997](https://doi.org/10.1038/srep20997) (2016).
34. Colombo, L. *et al.* Pathogenic $a\beta$ a2v versus protective $a\beta$ a2t mutation: Early stage aggregation and membrane interaction. *Biophys. Chem.* **229**, 11 – 18, DOI: [10.1016/j.bpc.2017.05.001](https://doi.org/10.1016/j.bpc.2017.05.001) (2017). SIBPA 2016 - XXIII SIBPA Congress.
35. Pfefferkorn, C. M. *et al.* Depth of α -synuclein in a bilayer determined by fluorescence, neutron reflectometry, and computation. *Biophys. J.* **102**, 613 – 621, DOI: [10.1016/j.bpj.2011.12.051](https://doi.org/10.1016/j.bpj.2011.12.051) (2012).
36. Mattauch, S. *et al.* The high-intensity reflectometer of the Jülich Centre for Neutron Science: MARIA. *J. Appl. Crystallogr.* **51**, 646–654, DOI: [10.1107/S1600576718006994](https://doi.org/10.1107/S1600576718006994) (2018).
37. Marsh, D. Liquid-ordered phases induced by cholesterol: A compendium of binary phase diagrams. *Biochimica et Biophys. Acta (BBA) - Biomembr.* **1798**, 688 – 699, DOI: [10.1016/j.bbamem.2009.12.027](https://doi.org/10.1016/j.bbamem.2009.12.027) (2010).
38. Nelson, A. Co-refinement of multiple-contrast neutron/X-ray reflectivity data using *MOTOFIT*. *J. Appl. Crystallogr.* **39**, 273–276, DOI: [10.1107/S0021889806005073](https://doi.org/10.1107/S0021889806005073) (2006).
39. Raine, C. S. Morphology of myelin and myelination. In *Myelin*, 1–50 (Springer, 1984).
40. Aggarwal, S. *et al.* Myelin membrane assembly is driven by a phase transition of myelin basic proteins into a cohesive protein meshwork. *PLoS biology* **11** (2013).
41. Bakhti, M., Aggarwal, S. & Simons, M. Myelin architecture: zippering membranes tightly together. *Cell. molecular life sciences* **71**, 1265–1277 (2014).
42. Kattinig, D. R., Bund, T., Boggs, J. M., Harauz, G. & Hinderberger, D. Lateral self-assembly of 18.5-kda myelin basic protein (mbp) charge component-c1 on membranes. *Biochimica et Biophys. Acta (BBA)-Biomembranes* **1818**, 2636–2647 (2012).
43. Beniac, D. R. *et al.* Three-dimensional structure of myelin basic protein i. reconstruction via angular reconstitution of randomly oriented single particles. *J. Biol. Chem.* **272**, 4261–4268 (1997).
44. Xu, H. *et al.* Orientation of a monoclonal antibody adsorbed at the solid/solution interface: a combined study using atomic force microscopy and neutron reflectivity. *Langmuir* **22**, 6313–6320 (2006).
45. Stadler, A. M. *et al.* Internal nanosecond dynamics in the intrinsically disordered myelin basic protein. *J. Am. Chem. Soc.* **136**, 6987–6994, DOI: [10.1021/ja502343b](https://doi.org/10.1021/ja502343b) (2014).
46. Ohl, M. *et al.* The spin-echo spectrometer at the spallation neutron source (sns). *Nucl. Instruments Methods In Phys. Res.* **696**, 85–99, DOI: [10.1016/j.nima.2012.08.059](https://doi.org/10.1016/j.nima.2012.08.059) (2012).

List of Abbreviations

MBP	myelin basic protein
MS	multiple sclerosis
CNS	central nervous system
EAE	experimental autoimmune encephalomyelitis
LUV	large unilamellar vesicle
CNS	central nervous system
SANS	small angle neutron scattering
SAXS	small angle x-ray scattering
cryo-TEM	cryo-transmission electron microscopy
SLD	scattering length density
CNS	central nervous system
PS	phosphatidylserine
MLV	multilamellar vesicle
GUV	giant unilamellar vesicle
NSE	neutron spin echo
NR	neutron reflectometry
SMW	silicon matched water

Acknowledgements

We would like to thank Dr. Javier Perez and the SWING beamline in SOLEIL for the synchrotron SAXS measurements. Additionally, we want to thank Dr. Ralf Biehl for providing the jscatter software for fitting SAS and NSE data. Neutron beam time at SNS-NSE for this research has been allocated by Jülich Centre for Neutron Sciences through the Scientific User Facilities Division, Office of Basic Energy Sciences, U.S. Department of Energy under IPTS-21681. The D₂O used in the NSE experiments was supplied by the United States Department of Energy Office of Science by Isotope Program in the Office of Nuclear Physics. The authors acknowledge Rhonda Moody and Dr. Kevin Weiss for SNS biochemistry lab support. This work is based upon experiments performed at the KWS-2 and MARIA instruments operated by JCNS at the Heinz Maier-Leibnitz Zentrum (MLZ), Garching, Germany.

Author contributions

A.M.S, A.R. and S.F. designed research; B.K., A.R., M.S.A, A.K, L.R.S and M.D. performed research; B.K. analysed all data; A.R., M.S.A, A.K, B.K and M.D. reduced data; S.F. contributed analytical model; B.K. and A.M.S wrote the manuscript with input from all other authors. All authors read and approved the finalized manuscript.

Competing Interests

The authors declare no competing interests.

Additional information

Supplementary information accompanies this paper.

Correspondence and requests for data should be addressed to A.M.S.