



## Original Investigation | Imaging

# Brain Responses to Noxious Stimuli in Patients With Chronic Pain A Systematic Review and Meta-analysis

Anna Xu, BS; Bart Larsen, PhD; Alina Henn, MS; Erica B. Baller, MD, MS; J. Cobb Scott, PhD; Vaishnavi Sharma, BA; Azeez Adebimpe, PhD; Allan I. Basbaum, PhD; Gregory Corder, PhD; Robert H. Dworkin, PhD; Robert R. Edwards, MD; Clifford J. Woolf, MB, BCh, PhD; Simon B. Eickhoff, MD; Claudia R. Eickhoff, MD; Theodore D. Satterthwaite, MD, MA

## Abstract

**IMPORTANCE** Functional neuroimaging is a valuable tool for understanding how patients with chronic pain respond to painful stimuli. However, past studies have reported heterogeneous results, highlighting opportunities for a quantitative meta-analysis to integrate existing data and delineate consistent associations across studies.

**OBJECTIVE** To identify differential brain responses to noxious stimuli in patients with chronic pain using functional magnetic resonance imaging (fMRI) while adhering to current best practices for neuroimaging meta-analyses.

**DATA SOURCES** All fMRI experiments published from January 1, 1990, to May 28, 2019, were identified in a literature search of PubMed/MEDLINE, EMBASE, Web of Science, Cochrane Library, PsycINFO, and SCOPUS.

**STUDY SELECTION** Experiments comparing brain responses to noxious stimuli in fMRI between patients and controls were selected if they reported whole-brain results, included at least 10 patients and 10 healthy control participants, and used adequate statistical thresholding (voxel-height  $P < .001$  or cluster-corrected  $P < .05$ ). Two independent reviewers evaluated titles and abstracts returned by the search. In total, 3682 abstracts were screened, and 1129 full-text articles were evaluated.

**DATA EXTRACTION AND SYNTHESIS** Thirty-seven experiments from 29 articles met inclusion criteria for meta-analysis. Coordinates reporting significant activation differences between patients with chronic pain and healthy controls were extracted. These data were meta-analyzed using activation likelihood estimation. Data were analyzed from December 2019 to February 2020.

**MAIN OUTCOMES AND MEASURES** A whole-brain meta-analysis evaluated whether reported differences in brain activation in response to noxious stimuli between patients and healthy controls were spatially convergent. Follow-up analyses examined the directionality of any differences. Finally, an exploratory (nonpreregistered) region-of-interest analysis examined differences within the pain network.

**RESULTS** The 37 experiments from 29 unique articles included a total of 511 patients and 433 controls (944 participants). Whole-brain meta-analyses did not reveal significant differences between patients and controls in brain responses to noxious stimuli at the preregistered statistical threshold. However, exploratory analyses restricted to the pain network revealed aberrant activity in patients.

(continued)

## Key Points

**Question** Do the brains of patients with chronic pain respond differently to noxious stimuli?

**Findings** This systematic review and meta-analysis of 37 experiments from 29 unique articles including 944 participants found that patients with chronic pain were not associated with significant differential responses to noxious stimuli that induce pain compared with healthy controls.

**Meaning** Chronic pain does not appear to be associated with consistent marked alterations in the brain's response to noxious stimuli.

## + Supplemental content

Author affiliations and article information are listed at the end of this article.

**Open Access.** This is an open access article distributed under the terms of the CC-BY License.

Abstract (continued)

**CONCLUSIONS AND RELEVANCE** In this systematic review and meta-analysis, preregistered, whole-brain analyses did not reveal aberrant fMRI activity in patients with chronic pain. Exploratory analyses suggested that subtle, spatially diffuse differences may exist within the pain network. Future work on chronic pain biomarkers may benefit from focus on this core set of pain-responsive areas.

JAMA Network Open. 2021;4(1):e2032236. doi:10.1001/jamanetworkopen.2020.32236

## Introduction

Chronic pain is one of the most common and debilitating medical conditions worldwide,<sup>1,2</sup> but existing treatments have modest efficacy, limited tolerability, and important safety risks.<sup>3</sup> Neuroimaging has been increasingly used to investigate brain responses to noxious stimuli in patients with chronic pain, in the hope of finding an imaging signature that can accelerate the development of novel therapeutics.<sup>3-7</sup> However, individual experiments are frequently underpowered, prone to false-positive findings, and diverse in the analytical pipelines and experimental designs used. These factors produce considerable heterogeneity in reported results<sup>8-15</sup> and necessitate synthesizing results across experiments to identify consistent, systematic alterations of brain responses in chronic pain.<sup>8,14,16-19</sup>

Neuroimaging meta-analyses provide a powerful strategy to identify convergent brain regions altered in pain processing in chronic pain.<sup>8,13,14</sup> However, existing meta-analyses examining differential brain responses to patients with chronic pain have yielded inconsistent findings, likely owing to differences in meta-analytic approaches used.<sup>20-23</sup> For example, several meta-analyses have reported aberrant activity in the cingulate cortex,<sup>20-22</sup> insula,<sup>20-22</sup> and secondary somatosensory cortex,<sup>20-22</sup> but others report aberrant activity in additional areas such as the cerebellum,<sup>21,22</sup> primary somatosensory cortex,<sup>22</sup> prefrontal cortex,<sup>22</sup> intraparietal lobule,<sup>22</sup> thalamus,<sup>22</sup> and supplementary motor area.<sup>22</sup> In addition, 1 meta-analysis<sup>23</sup> found no differences in patients with chronic pain compared with healthy control participants. By adhering to new recommendations for best practices in neuroimaging meta-analyses,<sup>13,14</sup> the present study sought to address 3 key limitations of prior work that may have contributed to such inconsistent findings.

First, most prior meta-analyses have compared patient and control participant responses to noxious stimuli across experiments<sup>20-22</sup> by contrasting meta-analytic maps that are calculated separately for experiments with only patients and those with only healthy controls. However, this between-experiment contrast confounds differences in experimental design with patient group because experiments studying patients often use different functional magnetic resonance imaging (fMRI) tasks and pain stimulation procedures than studies of controls.<sup>23</sup> Focus on within-experiment comparisons between patients and controls, where the noxious stimuli and imaging procedures used in both groups are identical, is a clear alternative that controls for variance in experimental procedures that would otherwise be present in between-experiment analyses. To our knowledge, no comprehensive meta-analysis of chronic pain has taken this approach; prior studies using this approach have only focused on specific conditions.<sup>24-26</sup>

Second, meta-analyses may introduce a source of bias by including experiments focused on specific regions of interest (ROI).<sup>20</sup> Including such experiments that restrict analyses to specific brain areas may introduce substantial bias toward finding results in those regions.<sup>13,14</sup> Current guidelines emphasize the importance of only including experiments reporting whole-brain results.<sup>13,14</sup> This is particularly relevant for studies of chronic pain, in which ROI-based approaches have been commonly used.

Last, differences in statistical significance thresholds used to account for multiple comparisons introduce another critical source of variability. Within the past 10 years, high-profile reports<sup>9,11,12</sup> have documented the failures of many widely used methods for controlling type I error in fMRI, leading

to a large number of false-positive findings in the existing literature. In neuroimaging meta-analyses, this problem can be present at 2 levels. First, including individual experiments that do not adequately control for type I error will inflate apparent differences between patients and controls in the meta-analytic results. Second, because imaging meta-analyses compare hundreds of thousands of locations across the brain, meta-analyses themselves also need to rigorously control for multiple comparisons.<sup>13,14,27</sup> However, existing meta-analyses have not consistently applied contemporary recommendations for type I error control at both levels.

We address these limitations in a preregistered meta-analysis focused on within-experiment comparisons, ensuring that differences due to patient group were not confounded with differences due to experimental design. Next, we reduced the potential for regional bias by requiring experiments to report whole-brain results. Finally, we only included experiments that applied some type I error control and then rigorously corrected for multiple comparisons in the meta-analysis itself. By addressing these limitations, we evaluated whether robust differences in brain responses to noxious stimuli between patients with chronic pain and healthy controls existed and were replicable across experiments.

## Methods

We conducted a systematic review and meta-analysis that followed the Preferred Reporting Items for Systematic Reviews and Meta-analyses (PRISMA) reporting guideline<sup>28</sup> and field-standard guidelines for meta-analyses.<sup>13,14</sup> The following procedures and analyses conducted in this meta-analysis were preregistered on PROSPERO. This study was deemed exempt from ethics approval by the University of Pennsylvania because only nonidentifiable summary statistics from published data were used.

Briefly, we searched for experiments published from January 1, 1990, to May 28, 2019, using PubMed/MEDLINE, EMBASE, Web of Science, Cochrane Library, PsycINFO, and SCOPUS. We used the following search terms: (*fMRI or functional magnetic resonance imaging or BOLD or brain mapping*) AND (*pain or noxious or nociception*) AND (*patients or neuropathic or chronic pain or hyperalgesia or allodynia*) OR (*arterial spin label*).

Two independent reviewers (A.X. and B.L.) then evaluated titles and abstracts returned by this search for full-text screening. For full-text screening, we applied the inclusion criteria outlined below. This screening process resulted in a total of 58 experiments from 47 articles meeting inclusion criteria. Because neuroimaging meta-analyses only integrate significant results reported in individual experiments, only experiments reporting significant results were evaluated. This is a known limitation of neuroimaging meta-analyses (see Discussion section below). Accordingly, 37 experiments from 29 articles were included in the meta-analysis (Figure 1). More detail on our search and screening methods are in the eMethods in the Supplement.

## Inclusion Criteria

Experiments were only included if they met the following criteria, which adhered to recent neuroimaging meta-analysis guidelines<sup>13,14</sup>:

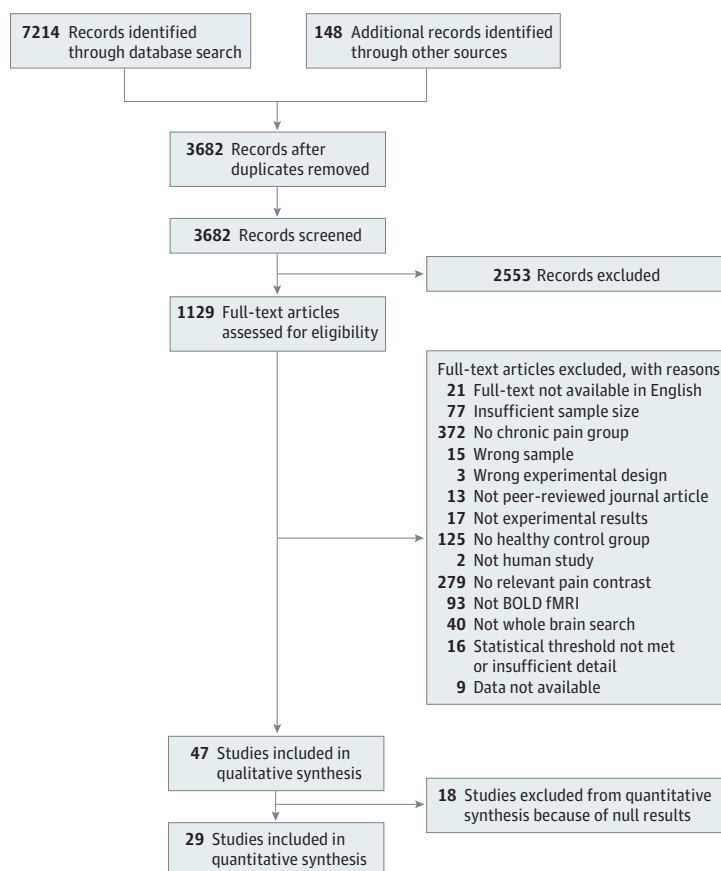
1. The experiment was from a peer-reviewed journal article written in English.
2. The experiment included a patient group with chronic pain and a healthy control group. Patients were considered to have chronic pain if they were formally diagnosed with a chronic pain condition (by a clinician, an assessment, or field-standard criteria) or reported experiencing pain for at least 6 months.
3. The experiment included at least 10 participants in the patient group and at least 10 participants in the healthy control group.
4. Participants were 18 years or older within both patient and healthy control groups.
5. All participants confirmed the noxious stimuli to be painful by explicitly reporting the stimuli being painful, by participant ratings of experienced pain from the stimuli, or by titrating the stimuli to a threshold predetermined to be painful by participants.

6. Brain responses to noxious stimuli were measured by task-activated, blood-oxygen level-dependent responses monitored with fMRI.
7. The experiment contained a within-participant "pain greater than baseline" contrast not confounded by other experimental manipulations (eg, pharmacological treatment before the pain induction).
8. The experiment contained a between-group "patients greater than healthy controls" contrast.
9. The field of view and reported results included the whole brain (ie, ROI analyses were excluded). This criterion was imposed to prevent bias toward a priori ROIs.
10. Results adequately corrected for multiple comparisons<sup>9</sup> by either reporting activation at a voxel-level threshold of  $P < .001$  (uncorrected) or a corrected cluster probability of  $P < .05$ . Articles with insufficient detail about their multiple comparisons correction methods were excluded.
11. Experimental results were reported in a standard, stereotaxic reference space coordinate system (Montreal Neurological Institute or Talairach space). If coordinate results were not reported in experiments that otherwise met inclusion criteria, we e-mailed corresponding authors and included the experiment if data were provided.

### Coordinate-Based Meta-analysis

Data were analyzed from December 2019 to February 2020. Activation likelihood estimation was used for all meta-analyses.<sup>29-31</sup> More details on data extraction and the activation likelihood estimation algorithm are found in the eMethods in the [Supplement](#). Adhering to current

**Figure 1. Preferred Reporting Items for Systematic Reviews and Meta-analyses (PRISMA) Flowchart Detailing Screening Process**



In total, 37 experiments from 29 articles were included in the meta-analysis.

recommendations for type I error control, we applied a voxel-level threshold of  $P < .001$  and cluster-level familywise error-corrected threshold of  $P < .05$ . To better understand the distribution of subthreshold results, we further examined unthresholded statistical maps.

Our primary analysis sought to identify areas associated with aberrant activity in response to noxious stimuli in patients with chronic pain by assessing differences between patients and controls, irrespective of the directionality of the association. If a publication had multiple related experiments from the same participants, we included all coordinates but treated them as a single experiment, thereby using only 1 set of coordinates per publication. Next, to assess whether group differences in response to noxious stimuli were influenced by differences in pain intensity, we separately analyzed experiments in which pain intensity was matched between groups based on subjective rating (18 experiments). We did not separately analyze experiments administering a fixed intensity of stimulation across groups, because there was an insufficient number of experiments (11 experiments; current guidelines recommend at least 17).<sup>27</sup> In addition, to evaluate the directionality of the response, we meta-analyzed experiments reporting greater brain activity in patients compared with controls ( $n = 23$ ). We did not conduct separate analyses of experiments reporting less activity in patients than controls owing to an insufficient number of experiments ( $n = 14$ ).<sup>27</sup> Similarly, owing to an insufficient number of experiments, we did not subanalyze specific pain conditions.

Finally, we conducted a post hoc, nonpreregistered, ROI-based meta-analysis focused on brain regions known to be involved in pain processing, as identified by a pain network from a recent meta-analysis of pain responses in healthy volunteers.<sup>32</sup> Briefly, this approach compares the sum of the activation likelihood estimation scores within the pain network with the sum of a null set of activation likelihood estimation scores generated from spatial permutations. Significance was determined by comparing the observed sum within the pain network with the null distribution using a threshold of  $P < .001$ . Further details are highlighted in the eMethods in the [Supplement](#). All experiments, regardless of whether they reported greater or less activity in patients, were included in this ROI-based meta-analysis, whereas a subset of experiments reporting greater activity is reported in the eResults and eFigures 1 and 2 in the [Supplement](#).

## Results

We meta-analyzed 37 experiments from 29 articles,<sup>33–61</sup> including a total of 511 patients and 433 healthy controls (944 participants). Chronic pain conditions included migraines ( $n = 7$ ), fibromyalgia ( $n = 5$ ), irritable bowel syndrome ( $n = 5$ ), chronic back pain ( $n = 4$ ), complex regional pain syndrome ( $n = 2$ ), chemotherapy-induced peripheral neuropathy ( $n = 1$ ), osteoarthritis ( $n = 1$ ), persistent dentoalveolar pain disorder ( $n = 1$ ), posttraumatic headache ( $n = 1$ ), vulvar vestibulitis ( $n = 1$ ), and a mixed patient group ( $n = 1$ ). Most of the experiments used mechanically induced pain ( $n = 14$ ), whereas others used thermal ( $n = 10$ ), electrical ( $n = 4$ ), or chemically ( $n = 1$ ) induced pain. Most experiments matched noxious stimuli in patients and controls based on similar perceptual ratings of pain intensity ( $n = 18$ ). Remaining experiments ( $n = 11$ ) induced pain at a fixed stimulus intensity across patients and control groups.

Eleven of the 29 experiments excluded the presence of any psychiatric comorbidities. Four experiments excluded participants based on the presence specific psychiatric comorbidities, such as anxiety, posttraumatic stress disorder, severe or unstable mental disorders, and current Axis I mental disorders. Two experiments explicitly did not exclude participants based on the criteria of psychiatric comorbidities, and 12 experiments did not provide criteria related to psychiatric comorbidities. More details on included experiments are present in the eTable in the [Supplement](#). The original coordinate data and code for analysis can be found at [https://github.com/PennLINC/Xu\\_fMRIChronicPain](https://github.com/PennLINC/Xu_fMRIChronicPain).

## Primary Meta-analysis

Our primary meta-analysis evaluated whether convergent differences in responses to noxious stimuli between patients and healthy controls existed, regardless of the sign of the association. We did not

find significant differences between groups at our preregistered statistical threshold (which included voxel height,  $P < .001$  and familywise error-corrected cluster significance,  $P < .05$ ). Unthresholded maps revealed a qualitatively wide distribution of foci reported across experiments (**Figure 2**); this lack of convergence was reflected by the null results.

Subsequent analysis restricted to experiments matching subjective pain ratings across groups also did not reveal any significant differences (eResults and eFigures 1 and 2 in the [Supplement](#)). Similarly, separate analyses of experiments reporting greater brain activity with pain in patients did not reveal significant differences. However, unthresholded maps qualitatively suggested an enrichment of (nonsignificant) associations in pain-related brain regions (**Figure 3**). This observation motivated post hoc regional analyses.

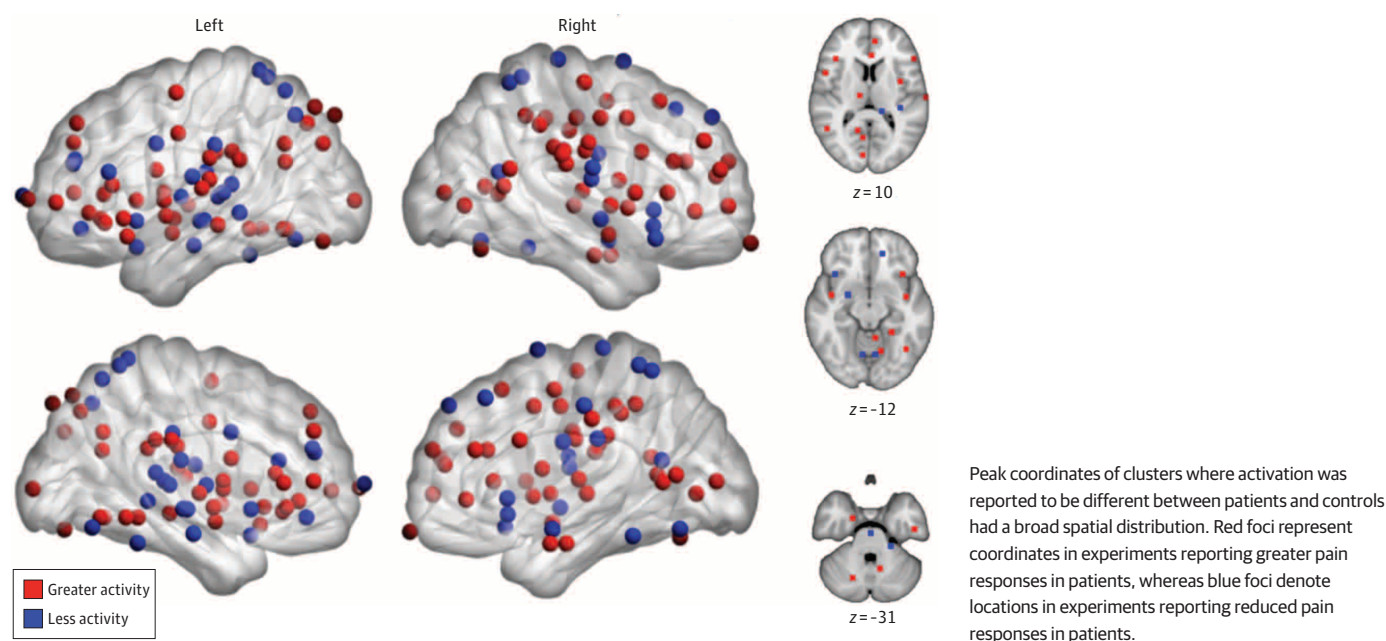
### Post hoc Regional Analysis of Pain Network

Based on examination of unthresholded maps, we conducted a post hoc, nonpreregistered regional analysis focused on the pain network, as defined by a previous meta-analysis examining brain responses to noxious stimuli in healthy volunteers.<sup>32</sup> This regional analysis of unsigned associations revealed significant ( $P < .001$ ) associations compared with the null distribution, suggesting that patients with chronic pain may have aberrant responses to noxious stimuli within the pain network (**Figure 4**). Follow-up analyses of directional associations revealed greater responses in patients than control individuals within this network (eResults and eFigures 1 and 2 in the [Supplement](#)).

## Discussion

Our findings suggest a lack of evidence for consistent differences in brain responses to noxious stimuli in patients with chronic pain. These null results were found in an adequate sample of experiments: 29 experiments were included in the meta-analysis, which is well-powered for a neuroimaging meta-analysis.<sup>13,27</sup> However, post hoc, nonpreregistered regional analyses of responses within a previous meta-analytic map for pain<sup>32</sup> revealed subtle differences in the aggregate activation of the pain network. This suggests that to the extent that differences in brain

**Figure 2. Distribution of Foci From Experiments Reporting Differences in Responses to Experimentally Induced Pain Between Patients With Chronic Pain and Healthy Controls**



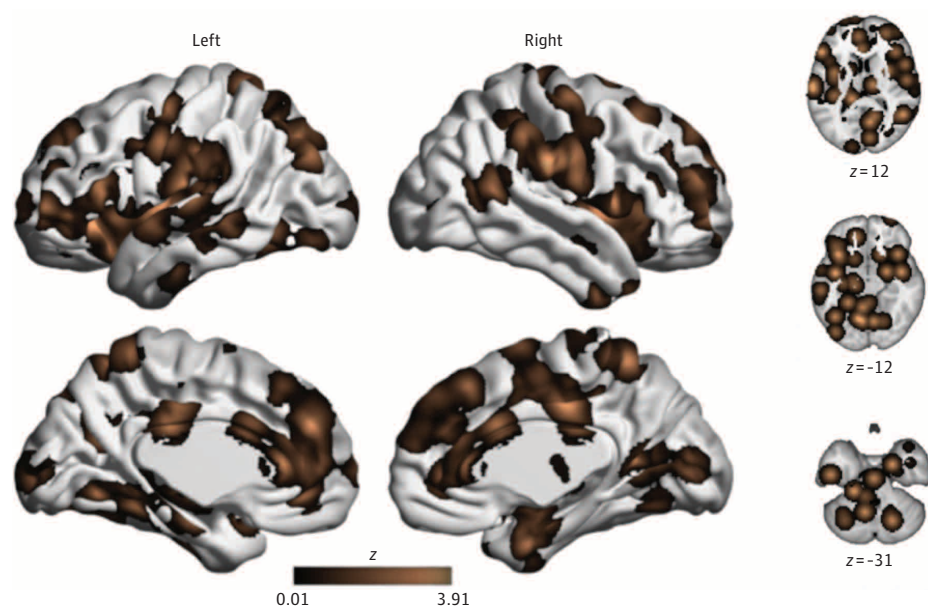


responses to noxious stimuli in chronic pain are present, they may be localized to core pain-processing areas. Notably, we did not set out to validate a specific model or theoretical framework in this study. Instead, we sought to resolve inconsistencies in the literature through application of rigorous methods. As such, this data-driven study is complementary to prior work that focuses on specific models of chronic pain.

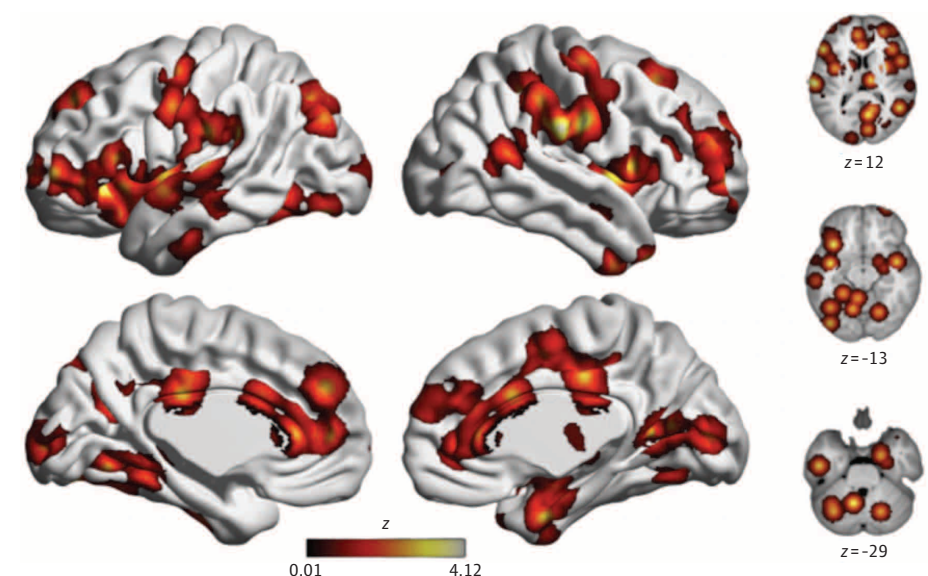
These results align with 1 prior meta-analysis that similarly reported null results<sup>14</sup> but stand in contrast to prior fMRI meta-analyses that have reported aberrant activity in a variety of regions, including cingulate cortex,<sup>20-22</sup> insula,<sup>20-22</sup> secondary somatosensory cortex,<sup>20-22</sup> cerebellum,<sup>21,22</sup> primary somatosensory cortex,<sup>22</sup> prefrontal cortex,<sup>22</sup> intraparietal lobule, thalamus,<sup>22</sup> and supplementary motor area.<sup>22</sup> Methodological differences, including differences in inclusion criteria

Figure 3. Unthresholded Maps of Differences Between Patients With Chronic Pain and Healthy Controls

**A** Unsigned contrast comparing patients and controls



**B** Directional contrast of patients and controls



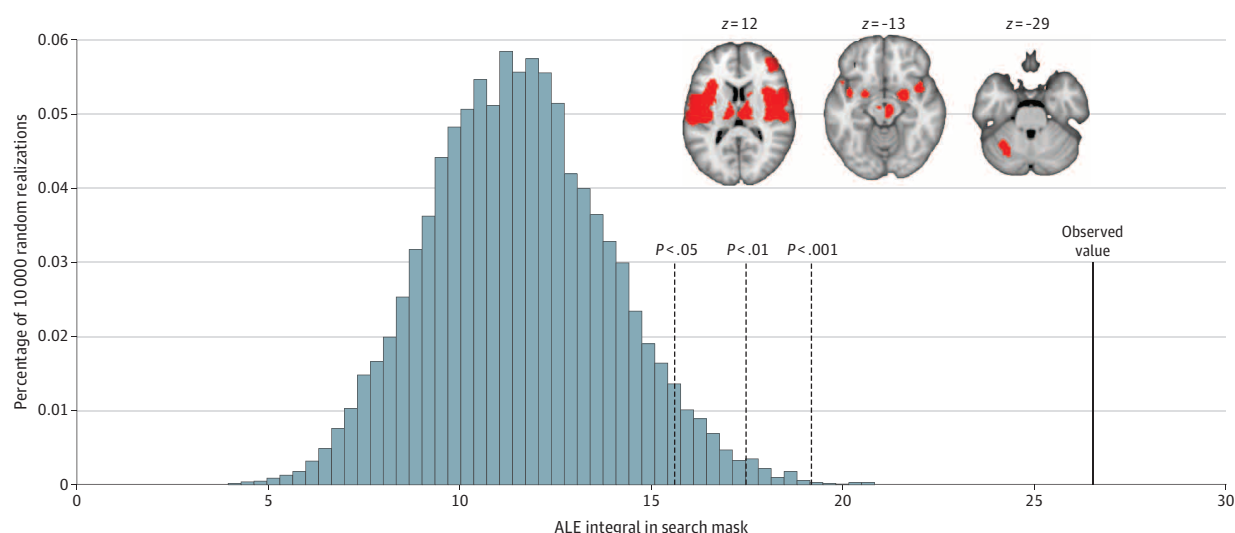
Maps display unthresholded associations from analyses. No between-group differences were significant at our preregistered statistical threshold (voxel height,  $P < .001$ ; familywise error-corrected cluster significance,  $P < .05$ ). However, pain-related regions appeared to be enriched for (nonsignificant) associations, which motivated post hoc regional analyses.

and meta-analytic techniques, may have driven these disparate findings. In the present study, several important methodological choices that address 3 key issues bolster confidence in our results. First, we address the issue of conflating experimental design differences with differences between groups by focusing on within-experiment contrasts of brain responses to pain in patients compared with controls. Second, we address potential for regional bias by only including experiments reporting whole brain analyses. As a result of this inclusion criteria, we excluded 40 experiments because of use of a smaller search volume or using ROI-based approaches. Common regions examined include the primary somatosensory cortex, secondary somatosensory cortex, brainstem, anterior cingulate cortex, prefrontal cortex, thalamus, and insula.

Finally, we limited the potential for false-positive findings by requiring experiments to have at least 10 participants per group and to correct for multiple comparisons (with an uncorrected voxel height of  $P < .001$  or cluster-corrected threshold of  $P < .05$ ). These criteria are more rigorous than previous meta-analyses, which typically have not considered the type I error control of included experiments. Notably, this was by no means overly conservative: current standards recommend applying a voxel-height of  $P < .001$  and a cluster-corrected threshold of  $P < .05$ . We did not require such a level of correction, because preliminary searches revealed that only a few experiments met that threshold or provided sufficient information regarding their methods. However, at the meta-analytic level, we applied these stringent standards for proper type I error control.<sup>13,14,27</sup> As such, our approach aligns with the current best practices for avoiding spurious results.

Several factors may contribute to the observed null results. First, most of the included experiments matched noxious stimulation in patients and controls using subjective ratings of pain. This experimental design would pose difficulty in detecting other sources of abnormal brain responses to noxious stimuli in patients. For example, patients with central sensitization could show increased responses to noxious stimuli at lower levels of intensity compared with a control group, owing to amplification of pain from hyperalgesia or allodynia.<sup>62</sup> Null differences can therefore be attributable to similar experiences of experimental pain induction that are unable to detect these differences between patients and controls.

Figure 4. Post hoc Regional Analyses of Pain Network



Histogram displays the distribution of the sum of activation likelihood estimation (ALE) scores within the pain network under the null distribution derived from spatial permutations. The observed value from our meta-analysis shows that our summed ALE score within the pain network exceeds that expected from the null distribution. This

suggests a significant convergence of aberrant activity within the pain network in patients with chronic pain. Inset displays the pain network mask, defined by a prior meta-analysis of brain responses to pain in healthy volunteers.<sup>32</sup>



Second, heterogeneity driven by differences in underlying neurobiology in chronic pain conditions,<sup>16</sup> sample demographics,<sup>63-65</sup> experimental design, and analytical pipelines<sup>8,10,15</sup> may contribute to inconsistent results across experiments. Owing to the limited number of experiments meeting our inclusion criteria, we could not assess whether patient conditions with different etiology (ie, whether pain was a primary or secondary condition)<sup>66</sup> and neurobiology<sup>16</sup> differentially affect brain responses to noxious stimuli. Previous meta-analyses with less stringent inclusion criteria have shown different patterns of functional reorganization of the brain in different chronic pain conditions.<sup>23</sup> These findings highlight the need to examine the influence of specific pain conditions on aberrant responses to pain perception when more experiments meeting rigorous inclusion criteria are available. For example, differences between visceral and nonvisceral pain, both at the level of pain perception and at the level of autonomic and emotional responses involvement, raise the possibility that patients with visceral pain show different brain responses to pain.<sup>67</sup> Prior work<sup>25</sup> has shown differences in brain areas involved in emotional arousal in patients with irritable bowel syndrome compared with healthy controls. Future studies should examine the possibility of these differences when more experiments are available.

Patients' sex,<sup>64</sup> age,<sup>63</sup> and medication status<sup>68</sup> may also play a role in their brain responses to pain. For example, patients' sex may affect functional activity of sensorimotor regions, the insula, and emotional-arousal reactivity,<sup>64</sup> whereas age may affect striatal pain modulatory mechanisms.<sup>63</sup> However, an insufficient number of experiments included limited our ability to rigorously test the influence of these factors. Medication status, such as the use of opioids, nonsteroidal anti-inflammatory drugs, atypical antipsychotics, or antidepressants, may alter brain function in patients, but the diverse medication inclusion criteria used in each experiment creates difficulty in conducting subanalyses focused on medication status.<sup>68</sup> Beyond patient condition and demographics, differences in pain stimulation also add to inconsistencies between reported brain regions across experiments. Prior work reporting differences in brain region responses to pain<sup>20,23,69</sup> depend on stimulation location and modality (eg, thermal, mechanical), highlighting the need for further investigation.

Third, a known limitation of our meta-analytic algorithm is that experiments without significant results cannot be included. This limitation biases the meta-analysis toward finding significant results but also bolsters confidence in our null results, because we did not find significant associations even when null experiments were not included.

In contrast to these results, we qualitatively observed a nonsignificant enrichment of foci in pain-related regions in our unthresholded meta-analytic maps. Accordingly, we conducted exploratory regional analyses focused on a previously identified pain network<sup>32</sup> and found that if differences in response to noxious stimuli between groups did exist, they are likely localized within the pain network. This exploratory analysis likely yielded significant results (whereas the main voxelwise analyses did not) because regional analyses do not require whole-brain multiple comparisons correction. Furthermore, regional analyses evaluate aggregate responses across the pain network rather than requiring precise spatial convergence, providing greater sensitivity that would only be necessary if aberrant responses were both subtle and regionally localized. Although exploratory and inconclusive, these results may motivate and constrain future studies.

## Limitations

This meta-analysis focused on differences in task-activated, blood-oxygen level-dependent responses to noxious stimuli between patients and healthy controls. However, our literature search also yielded related articles using other neuroimaging measures and experimental designs that may have differential sensitivity to chronic pain. Specifically, we did not evaluate measures such as functional connectivity,<sup>70,71</sup> cerebral blood flow,<sup>72</sup> differences between patients in the chronic vs subacute phase of pain,<sup>73</sup> or patient responses to spontaneous pain.<sup>74</sup>

## Conclusions

This systematic review and meta-analysis quantitatively synthesizes studies reporting within-experiment comparisons between patients with chronic pain and healthy controls while adhering to best practices for neuroimaging meta-analyses. The preregistered approach did not find evidence of significant differences in brain responses to noxious stimuli in patients. However, exploratory, regional analyses suggested limited brain activation differences in canonical brain regions robustly activated in pain processing. Overall, the results suggest that, if abnormalities in brain responses to pain in chronic pain are present, their response patterns are likely not consistent or robust.

## ARTICLE INFORMATION

**Accepted for Publication:** November 11, 2020.

**Published:** January 5, 2021. doi:10.1001/jamanetworkopen.2020.32236

**Open Access:** This is an open access article distributed under the terms of the [CC-BY License](#). © 2021 Xu A et al. JAMA Network Open.

**Corresponding Author:** Theodore D. Satterthwaite, MD, MA, Department of Psychiatry, University of Pennsylvania, Richards Medical Laboratories, 3700 Hamilton Walk, 5th Floor, Philadelphia, PA 19104 ([sattertt@pennmedicine.upenn.edu](mailto:sattertt@pennmedicine.upenn.edu)).

**Author Affiliations:** Department of Psychiatry, University of Pennsylvania, Philadelphia (Xu, Larsen, Baller, Scott, Sharma, Adebimpe, Corder, Satterthwaite); Department of Psychiatry, Psychotherapy and Psychosomatics, Medical Faculty, RWTH (Rheinisch-Westfälische Technische Hochschule) Aachen University, Aachen, Germany (Henn); Department of Psychiatry, Massachusetts General Hospital, Boston (Baller); Department of Psychiatry, Harvard University, Boston, Massachusetts (Baller); VISN4 Mental Illness Research, Education, and Clinical Center at the Corporal Michael J. Crescenz VA (Veterans Affairs) Medical Center, Philadelphia, Pennsylvania (Scott); Department of Anatomy, University of California, San Francisco (Basbaum); Department of Anesthesiology and Perioperative Medicine, University of Rochester School of Medicine and Dentistry, Rochester, New York (Dworkin); Department of Anesthesiology, Perioperative and Pain Medicine, Brigham and Women's Hospital, Harvard Medical School, Boston, Massachusetts (Edwards); FM Kirby Neurobiology Center, Boston Children's Hospital, Boston, Massachusetts (Woolf); Department of Neurobiology, Harvard Medical School, Boston, Massachusetts (Woolf); Institute of Systems Neuroscience, Medical Faculty, Heinrich-Heine University, Düsseldorf, Germany (S. B. Eickhoff); Institute of Neuroscience and Medicine, Brain and Behaviour Sections, Research Centre Jülich, Jülich, Germany (S. B. Eickhoff, C. R. Eickhoff); Institute of Clinical Neuroscience and Medical Psychology, Medical Faculty, Heinrich-Heine-University, Düsseldorf, Germany (C. R. Eickhoff).

**Author Contributions:** Ms Xu and Dr Satterthwaite had full access to all the data in the study and take responsibility for the integrity of the data and the accuracy of the data analysis.

**Concept and design:** Xu, Larsen, Baller, Scott, Dworkin, Edwards, Woolf, S. Eickhoff, Satterthwaite.

**Acquisition, analysis, or interpretation of data:** Larsen, Henn, Sharma, Adebimpe, Basbaum, Corder, Edwards, S. Eickhoff, C. Eickhoff, Satterthwaite.

**Drafting of the manuscript:** Xu, Larsen, Basbaum, Dworkin, Satterthwaite.

**Critical revision of the manuscript for important intellectual content:** Xu, Larsen, Henn, Baller, Scott, Sharma, Adebimpe, Corder, Dworkin, Edwards, Woolf, S. Eickhoff, C. Eickhoff, Satterthwaite.

**Statistical analysis:** Xu, Larsen, Henn, Scott, Adebimpe, S. Eickhoff, C. Eickhoff, Satterthwaite.

**Obtained funding:** Dworkin, Satterthwaite.

**Administrative, technical, or material support:** Scott, Sharma, Basbaum, Dworkin, Edwards, Satterthwaite.

**Supervision:** Larsen, Baller, Scott, Dworkin, Edwards, S. Eickhoff, C. Eickhoff, Satterthwaite.

**Provided expertise in pain:** Woolf.

**Conflict of Interest Disclosures:** Ms Xu reported receiving grants from ACTTION (Analgesic, Anesthetic, and Addition Clinical Trial Translations, Innovations, Opportunities, and Networks) during the conduct of the study. Dr Corder reported receiving grants from the Alkermes Pathways Research Award program, the Whitehall Foundation, and the Brain and Behavior Research Foundation outside the submitted work. Dr Dworkin reported receiving grants from the US Food and Drug Administration (FDA) during the conduct of the study and personal fees from Abide, Acadia Pharmaceuticals, Inc, Adynxx, Inc, Analgesic Solutions, LLC, Aptinyx, Inc, Aquinox Pharmaceuticals, Asahi Kasei Corporation, Astellas Pharma, Inc, AstraZeneca, Biogen, Inc, Biohaven

Pharmaceuticals, Boston Scientific Corporation, Braeburn, Inc, Celgene Corporation, Centrexion Therapeutics Corp, Chromocell Corporation, Clexio Biosciences, Ltd, Concert Pharmaceuticals, Inc, Coronado, Daiichi Sankyo Company, Limited, Decibel Therapeutics, Dong-A, Editas Medicine, Eli Lilly & Company, Eupraxia Pharmaceuticals, Glenmark Pharmaceuticals, Limited, W. R. Grace & Co, Hope Pharmaceuticals, Hydra, Immune Pharmaceuticals, Inc, Johnson & Johnson, Lotus Clinical Research, Mainstay, Medavante Technologies, Inc, Merck & Co, Neumentum, Inc, Neurana Pharmaceuticals, NeuroBo Pharmaceuticals, Inc, Novaremed AG, Novartis International AG, NSGene A/S, Olatec, Periphagen, Pfizer, Inc, Phosphagenics, Quark Pharmaceuticals, Reckitt Benckiser Group plc, Regenacy Pharmaceuticals, Relmada Therapeutics, Inc, Sanifit, Scilex Pharmaceuticals, Semnur Pharmaceuticals, Inc, SK Life Science, Inc, Sollis Therapeutics, Spinifex Pharma, Syntrix Pharmaceuticals, Teva Pharmaceuticals, Thar Pharmaceuticals, Inc, Theranexus, Trevena, Inc, Vertex Pharmaceuticals, Inc, and Vizuri Health Sciences, LLC, and having equity in Regenacy Pharmaceuticals outside the submitted work. Dr Woolf reported being a founder and equity holder in Nocien Therapeutics outside the submitted work. No other disclosures were reported.

**Funding/Support:** This study was supported by the ACTION public-private partnership with the FDA, which has received research contracts, grants, or other revenue from the FDA, multiple pharmaceutical and device companies, philanthropy; National Institutes of Health grant T32MH014654 (Dr Larsen); and other sources.

**Role of the Funder/Sponsor:** The role of the funding organization included the collaboration of 4 individuals associated with the ACTION public-private partnership with the FDA in the design and conduct of the study; preparation, review, or approval of the manuscript; and decision to submit the manuscript for publication.

**Additional Contributions:** Zaixu Cui, PhD, University of Pennsylvania, assisted in guidance of surface figure generation, for which he did not receive compensation.

## REFERENCES

1. Jackson TP, Stabile VS, McQueen KAK. The global burden of chronic pain. *ASA News*. 2014;78(6):24-27.
2. Goldberg DS, McGee SJ. Pain as a global public health priority. *BMC Public Health*. 2011;11(1):770. doi:10.1186/1471-2458-11-770
3. Volkow ND, Koroshetz WJ. The role of neurologists in tackling the opioid epidemic. *Nat Rev Neurol*. 2019;15(5):301-305. doi:10.1038/s41582-019-0146-8
4. Apkarian AV. The brain in chronic pain: clinical implications. *Pain Manag*. 2011;1(6):577-586. doi:10.2217/pmt.11.53
5. Lee MC, Tracey I. Unravelling the mystery of pain, suffering, and relief with brain imaging. *Curr Pain Headache Rep*. 2010;14(2):124-131. doi:10.1007/s11916-010-0103-0
6. May A. Neuroimaging: visualising the brain in pain. *Neurol Sci*. 2007;28(2)(suppl 2):S101-S107. doi:10.1007/s10072-007-0760-x
7. Tracey I, Bushnell MC. How neuroimaging studies have challenged us to rethink: is chronic pain a disease? *J Pain*. 2009;10(11):1113-1120. doi:10.1016/j.jpain.2009.09.001
8. Wager TD, Lindquist MA, Nichols TE, Kober H, Van Snellenberg JX. Evaluating the consistency and specificity of neuroimaging data using meta-analysis. *Neuroimage*. 2009;45(1)(suppl):S210-S221. doi:10.1016/j.neuroimage.2008.10.061
9. Eklund A, Nichols T, Knutsson H. Cluster failure: why fMRI inferences for spatial extent have inflated false-positive rates. *Proc Natl Acad Sci*. 2016;113(28):7900-7905. doi:10.1073/pnas.1602413113
10. Carp J. On the plurality of (methodological) worlds: estimating the analytic flexibility of FMRI experiments. *Front Neurosci*. 2012;6:149. doi:10.3389/fnins.2012.00149
11. Poldrack RA, Baker CI, Durnez J, et al. Scanning the horizon: towards transparent and reproducible neuroimaging research. *Nat Rev Neurosci*. 2017;18(2):115-126. doi:10.1038/nrn.2016.167
12. Button KS, Ioannidis JPA, Mokrysz C, et al. Power failure: why small sample size undermines the reliability of neuroscience. *Nat Rev Neurosci*. 2013;14(5):365-376. doi:10.1038/nrn3475
13. Müller VI, Cieslik EC, Laird AR, et al. Ten simple rules for neuroimaging meta-analysis. *Neurosci Biobehav Rev*. 2018;84:151-161. doi:10.1016/j.neubiorev.2017.11.012
14. Tahmasian M, Sepehry AA, Samea F, et al. Practical recommendations to conduct a neuroimaging meta-analysis for neuropsychiatric disorders. *Hum Brain Mapp*. 2019;40(17):5142-5154. doi:10.1002/hbm.24746
15. Botvinik-Nezer R, Holzmeister F, Camerer CF, et al. Variability in the analysis of a single neuroimaging dataset by many teams. *Nature*. 2020;582(7810):84-88. doi:10.1038/s41586-020-2314-9
16. Borsook D, Becerra LR. Breaking down the barriers: fMRI applications in pain, analgesia and analgesics. *Mol Pain*. 2006;2(1):30. doi:10.1186/1744-8069-2-30

17. Borsook D, Moulton EA, Schmidt KF, Becerra LR. Neuroimaging revolutionizes therapeutic approaches to chronic pain. *Mol Pain*. 2007;3:25. doi:10.1186/1744-8069-3-25
18. Cowen R, Stasiowska MK, Laycock H, Bantel C. Assessing pain objectively: the use of physiological markers. *Anaesthesia*. 2015;70(7):828-847. doi:10.1111/anae.13018
19. Woo C-W, Chang LJ, Lindquist MA, Wager TD. Building better biomarkers: brain models in translational neuroimaging. *Nat Neurosci*. 2017;20(3):365-377. doi:10.1038/nn.4478
20. Friebe U, Eickhoff SB, Lotze M. Coordinate-based meta-analysis of experimentally induced and chronic persistent neuropathic pain. *Neuroimage*. 2011;58(4):1070-1080. doi:10.1016/j.neuroimage.2011.07.022
21. Jensen KB, Regenbogen C, Ohse MC, Frasnelli J, Freiherr J, Lundström JN. Brain activations during pain: a neuroimaging meta-analysis of patients with pain and healthy controls. *Pain*. 2016;157(6):1279-1286. doi:10.1097/j.pain.0000000000000517
22. Lanz S, Seifert F, Maihöfner C. Brain activity associated with pain, hyperalgesia and allodynia: an ALE meta-analysis. *J Neural Transm (Vienna)*. 2011;118(8):1139-1154. doi:10.1007/s00702-011-0606-9
23. Tanasescu R, Cottam WJ, Condon L, Tench CR, Auer DP. Functional reorganisation in chronic pain and neural correlates of pain sensitisation: a coordinate based meta-analysis of 266 cutaneous pain fMRI studies. *Neurosci Biobehav Rev*. 2016;68:120-133. doi:10.1016/j.neubiorev.2016.04.001
24. Dehghan M, Schmidt-Wilcke T, Pfleiderer B, et al. Coordinate-based (ALE) meta-analysis of brain activation in patients with fibromyalgia. *Hum Brain Mapp*. 2016;37(5):1749-1758. doi:10.1002/hbm.23132
25. Tillisch K, Mayer EA, Labus JS. Quantitative meta-analysis identifies brain regions activated during rectal distension in irritable bowel syndrome. *Gastroenterology*. 2011;140(1):91-100. doi:10.1053/j.gastro.2010.07.053
26. Ayoub LJ, Seminowicz DA, Moayedi M. A meta-analytic study of experimental and chronic orofacial pain excluding headache disorders. *Neuroimage Clin*. 2018;20:901-912. doi:10.1016/j.nicl.2018.09.018
27. Eickhoff SB, Nichols TE, Laird AR, et al. Behavior, sensitivity, and power of activation likelihood estimation characterized by massive empirical simulation. *Neuroimage*. 2016;137:70-85. doi:10.1016/j.neuroimage.2016.04.072
28. Moher D, Liberati A, Tetzlaff J, Altman DG; PRISMA Group. Preferred reporting items for systematic reviews and meta-analyses: the PRISMA statement. *PLoS Med*. 2009;6(7):e1000097. doi:10.1371/journal.pmed.1000097
29. Turkeltaub PE, Eden GF, Jones KM, Zeffiro TA. Meta-analysis of the functional neuroanatomy of single-word reading: method and validation. *Neuroimage*. 2002;16(3 Pt 1):765-780. doi:10.1006/nimg.2002.1131
30. Eickhoff SB, Laird AR, Grefkes C, Wang LE, Zilles K, Fox PT. Coordinate-based activation likelihood estimation meta-analysis of neuroimaging data: a random-effects approach based on empirical estimates of spatial uncertainty. *Hum Brain Mapp*. 2009;30(9):2907-2926. doi:10.1002/hbm.20718
31. Eickhoff SB, Bzdok D, Laird AR, Kurth F, Fox PT. Activation likelihood estimation meta-analysis revisited. *Neuroimage*. 2012;59(3):2349-2361. doi:10.1016/j.neuroimage.2011.09.017
32. Xu A, Larsen B, Baller EB, et al. Convergent neural representations of experimentally-induced acute pain in healthy volunteers: a large-scale fMRI meta-analysis. *Neurosci Biobehav Rev*. 2020;112:300-323. doi:10.1016/j.neubiorev.2020.01.004
33. Leung A, Shukla S, Yang E, et al. Diminished supraspinal pain modulation in patients with mild traumatic brain injury. *Mol Pain*. 2016;12:1744806916662661. doi:10.1177/1744806916662661
34. Freund W, Wunderlich AP, Stuber G, et al. Different activation of opercular and posterior cingulate cortex (PCC) in patients with complex regional pain syndrome (CRPS I) compared with healthy controls during perception of electrically induced pain: a functional MRI study. *Clin J Pain*. 2010;26(4):339-347. doi:10.1097/AJP.0b013e3181cb4055
35. Freund W, Wunderlich AP, Stuber G, et al. The role of periaqueductal gray and cingulate cortex during suppression of pain in complex regional pain syndrome. *Clin J Pain*. 2011;27(9):796-804. doi:10.1097/AJP.0b013e31821d9063
36. Mathur VA, Moayedi M, Keaser ML, et al. High frequency migraine is associated with lower acute pain sensitivity and abnormal insula activity related to migraine pain intensity, attack frequency, and pain catastrophizing. *Front Hum Neurosci*. 2016;10:489. doi:10.3389/fnhum.2016.00489
37. Gracely RH, Petzke F, Wolf JM, Clauw DJ. Functional magnetic resonance imaging evidence of augmented pain processing in fibromyalgia. *Arthritis Rheum*. 2002;46(5):1333-1343. doi:10.1002/art.10225
38. Bouhassira D, Moisset X, Jouet P, Duboc H, Coffin B, Sabate J-M. Changes in the modulation of spinal pain processing are related to severity in irritable bowel syndrome. *Neurogastroenterol Motil*. 2013;25(7):623-e468. doi:10.1111/nmo.12123

39. Boland EG, Selvarajah D, Hunter M, et al. Central pain processing in chronic chemotherapy-induced peripheral neuropathy: a functional magnetic resonance imaging study. *PLoS One*. 2014;9(5):e96474. doi:10.1371/journal.pone.0096474
40. Pukall CF, Strigo IA, Binik YM, Amsel R, Khalifé S, Bushnell MC. Neural correlates of painful genital touch in women with vulvar vestibulitis syndrome. *Pain*. 2005;115(1-2):118-127. doi:10.1016/j.pain.2005.02.020
41. Elsenbruch S, Rosenberger C, Enck P, Forsting M, Schedlowski M, Gizewski ER. Affective disturbances modulate the neural processing of visceral pain stimuli in irritable bowel syndrome: an fMRI study. *Gut*. 2010;59(4):489-495. doi:10.1136/gut.2008.175000
42. Elsenbruch S, Rosenberger C, Bingel U, Forsting M, Schedlowski M, Gizewski ER. Patients with irritable bowel syndrome have altered emotional modulation of neural responses to visceral stimuli. *Gastroenterology*. 2010;139(4):1310-1319. doi:10.1053/j.gastro.2010.06.054
43. Burgmer M, Pfeleiderer B, Maihöfner C, et al. Cerebral mechanisms of experimental hyperalgesia in fibromyalgia. *Eur J Pain*. 2012;16(5):636-647. doi:10.1002/j.1532-2149.2011.00058.x
44. Moana-Filho EJ, Bereiter DA, Nixdorf DR. Amplified brain processing of dentoalveolar pressure stimulus in persistent dentoalveolar pain disorder patients. *J Oral Facial Pain Headache*. 2015;29(4):349-362. doi:10.11607/ofph.1463
45. Baliki MN, Geha PY, Fields HL, Apkarian AV. Predicting value of pain and analgesia: nucleus accumbens response to noxious stimuli changes in the presence of chronic pain. *Neuron*. 2010;66(1):149-160. doi:10.1016/j.neuron.2010.03.002
46. Guleria A, Karyampudi A, Singh R, et al. Mapping of brain activations to rectal balloon distension stimuli in male patients with irritable bowel syndrome using functional magnetic resonance imaging. *J Neurogastroenterol Motil*. 2017;23(3):415-427. doi:10.5056/jnm16148
47. Hampson JP, Reed BD, Clauw DJ, et al. Augmented central pain processing in vulvodynia. *J Pain*. 2013;14(6):579-589. doi:10.1016/j.jpain.2013.01.767
48. Hiramatsu T, Nakanishi K, Yoshimura S, et al. The dorsolateral prefrontal network is involved in pain perception in knee osteoarthritis patients. *Neurosci Lett*. 2014;581(3):109-114. doi:10.1016/j.neulet.2014.08.027
49. Kim S-H, Lee Y, Lee S, Mun C-W. Evaluation of the effectiveness of pregabalin in alleviating pain associated with fibromyalgia: using functional magnetic resonance imaging study. *PLoS One*. 2013;8(9):e74099. doi:10.1371/journal.pone.0074099
50. Lloyd D, Findlay G, Roberts N, Nurmikko T. Differences in low back pain behavior are reflected in the cerebral response to tactile stimulation of the lower back. *Spine (Phila Pa 1976)*. 2008;33(12):1372-1377. doi:10.1097/BRS.0b013e3181734a8a
51. Dowdle LT, Borckardt JJ, Back SE, et al. Sensitized brain response to acute pain in patients using prescription opiates for chronic pain: A pilot study. *Drug Alcohol Depend*. 2019;200:6-13. doi:10.1016/j.drugalcdep.2019.02.024
52. Jensen KB, Kosek E, Petzke F, et al. Evidence of dysfunctional pain inhibition in Fibromyalgia reflected in rACC during provoked pain. *Pain*. 2009;144(1-2):95-100. doi:10.1016/j.pain.2009.03.018
53. Chen N, Zhang J, Wang P, Guo J, Zhou M, He L. Functional alterations of pain processing pathway in migraine patients with cutaneous allodynia. *Pain Med*. 2015;16(6):1211-1220. doi:10.1111/pme.12690
54. Rodriguez-Raecke R, Ihle K, Ritter C, Muhtz C, Otte C, May A. Neuronal differences between chronic low back pain and depression regarding long-term habituation to pain. *Eur J Pain*. 2014;18(5):701-711. doi:10.1002/j.1532-2149.2013.00407.x
55. Russo A, Tessitore A, Esposito F, et al. Pain processing in patients with migraine: an event-related fMRI study during trigeminal nociceptive stimulation. *J Neurol*. 2012;259(9):1903-1912. doi:10.1007/s00415-012-6438-1
56. Russo A, Tessitore A, Esposito F, et al. Functional changes of the perigenual part of the anterior cingulate cortex after external trigeminal neurostimulation in migraine patients. *Front Neurol*. 2017;8:282. doi:10.3389/fneur.2017.00282
57. Russo A, Esposito F, Conte F, et al. Functional interictal changes of pain processing in migraine with ictal cutaneous allodynia. *Cephalgia*. 2017;37(4):305-314. doi:10.1177/0333102416644969
58. Russo A, Tessitore A, Silvestro M, et al. Advanced visual network and cerebellar hyperresponsiveness to trigeminal nociception in migraine with aura. *J Headache Pain*. 2019;20(1):46. doi:10.1186/s10194-019-1002-3
59. Stankewitz A, Aderjan D, Eippert F, May A. Trigeminal nociceptive transmission in migraineurs predicts migraine attacks. *J Neurosci*. 2011;31(6):1937-1943. doi:10.1523/JNEUROSCI.4496-10.2011



60. Schmid J, Langhorst J, Gaß F, et al. Placebo analgesia in patients with functional and organic abdominal pain: a fMRI study in IBS, UC and healthy volunteers. *Gut*. 2015;64(3):418-427. doi:[10.1136/gutjnl-2013-306648](https://doi.org/10.1136/gutjnl-2013-306648)
61. Schreiber KL, Loggia ML, Kim J, Cahalan CM, Napadow V, Edwards RR. Painful after-sensations in fibromyalgia are linked to catastrophizing and differences in brain response in the medial temporal lobe. *J Pain*. 2017;18(7):855-867. doi:[10.1016/j.jpain.2017.02.437](https://doi.org/10.1016/j.jpain.2017.02.437)
62. Harte SE, Harris RE, Clauw DJ. The neurobiology of central sensitization. *J Appl Behav Res*. 2018;23(2):e12137. doi:[10.1111/jabr.12137](https://doi.org/10.1111/jabr.12137)
63. Cole LJ, Farrell MJ, Gibson SJ, Egan GF. Age-related differences in pain sensitivity and regional brain activity evoked by noxious pressure. *Neurobiol Aging*. 2010;31(3):494-503. doi:[10.1016/j.neurobiolaging.2008.04.012](https://doi.org/10.1016/j.neurobiolaging.2008.04.012)
64. Gupta A, Mayer EA, Fling C, et al. Sex-based differences in brain alterations across chronic pain conditions. *J Neurosci Res*. 2017;95(1-2):604-616. doi:[10.1002/jnr.23856](https://doi.org/10.1002/jnr.23856)
65. Aloisi AM, Bonifazi M. Sex hormones, central nervous system and pain. *Horm Behav*. 2006;50(1):1-7. doi:[10.1016/j.yhbeh.2005.12.002](https://doi.org/10.1016/j.yhbeh.2005.12.002)
66. Treede R-D, Rief W, Barke A, et al. Chronic pain as a symptom or a disease: the IASP Classification of Chronic Pain for the *International Classification of Diseases (ICD-11)*. *Pain*. 2019;160(1):19-27. doi:[10.1097/j.pain.0000000000001384](https://doi.org/10.1097/j.pain.0000000000001384)
67. Schwartz ES, Gebhart GF. Visceral Pain. In: Taylor BK, Finn DP, eds. *Behavioral Neurobiology of Chronic Pain. Current Topics in Behavioral Neurosciences*. Springer; 2014:171-197. doi:[10.1007/7854\\_2014\\_315](https://doi.org/10.1007/7854_2014_315)
68. Borsook D, Becerra L. Phenotyping central nervous system circuitry in chronic pain using functional MRI: considerations and potential implications in the clinic. *Curr Pain Headache Rep*. 2007;11(3):201-207. doi:[10.1007/s11916-007-0191-7](https://doi.org/10.1007/s11916-007-0191-7)
69. Duerden EG, Albanese M-C. Localization of pain-related brain activation: a meta-analysis of neuroimaging data. *Hum Brain Mapp*. 2013;34(1):109-149. doi:[10.1002/hbm.21416](https://doi.org/10.1002/hbm.21416)
70. Alger JR, Ellingson BM, Ashe-McNalley C, et al; MAPP Research Network Investigators. Multisite, multimodal neuroimaging of chronic urological pelvic pain: methodology of the MAPP Research Network. *Neuroimage Clin*. 2016;12:65-77. doi:[10.1016/j.nicl.2015.12.009](https://doi.org/10.1016/j.nicl.2015.12.009)
71. Kim J, Loggia ML, Cahalan CM, et al. The somatosensory link in fibromyalgia: functional connectivity of the primary somatosensory cortex is altered by sustained pain and is associated with clinical/autonomic dysfunction. *Arthritis Rheumatol*. 2015;67(5):1395-1405. doi:[10.1002/art.39043](https://doi.org/10.1002/art.39043)
72. Wasan AD, Loggia ML, Chen LQ, Napadow V, Kong J, Gollub RL. Neural correlates of chronic low back pain measured by arterial spin labeling. *Anesthesiology*. 2011;115(2):364-374. doi:[10.1097/ALN.0b013e318220e880](https://doi.org/10.1097/ALN.0b013e318220e880)
73. Hashmi JA, Baliki MN, Huang L, et al. Shape shifting pain: chronification of back pain shifts brain representation from nociceptive to emotional circuits. *Brain*. 2013;136(Pt 9):2751-2768. doi:[10.1093/brain/awt211](https://doi.org/10.1093/brain/awt211)
74. Farmer MA, Chanda ML, Parks EL, Baliki MN, Apkarian AV, Schaeffer AJ. Brain functional and anatomical changes in chronic prostatitis/chronic pelvic pain syndrome. *J Urol*. 2011;186(1):117-124. doi:[10.1016/j.juro.2011.03.027](https://doi.org/10.1016/j.juro.2011.03.027)

## SUPPLEMENT.

**eMethods.** Search, Screening, and Data Extraction

**eResults.** Supplementary Results of Follow-up Subanalyses

**eFigure 1.** Unthresholded Maps of Subanalyses of Experiments Matching Noxious Stimuli by Perceptual Rating

**eFigure 2.** Post hoc Regional Analysis of Pain Network Suggest Greater Activity in Response to Pain in Patients With Chronic Pain

**eTable.** Study Information About Articles and Experiments Included in Meta-analyses

**eReferences.**